

THIS DRAWING IS UNPUBLISHED.

RELEASED FOR PUBLICATION

ALL RIGHTS RESERVED.

© COPYRIGHT — By —

LOC

	DIST
--	------

REVISIONS

AF

50

	F
--	---

LTR

DESCRIPTION

DATE _____

DWN

	APVD
--	------

IN

REVISÉD PER ECR-13-005733

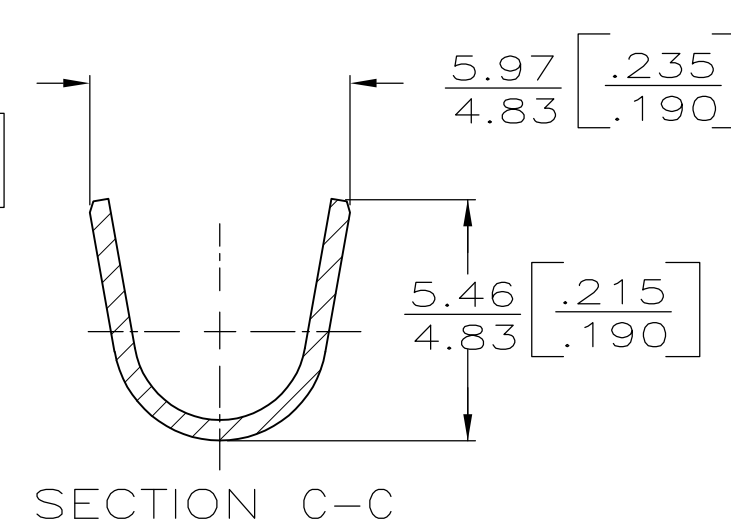
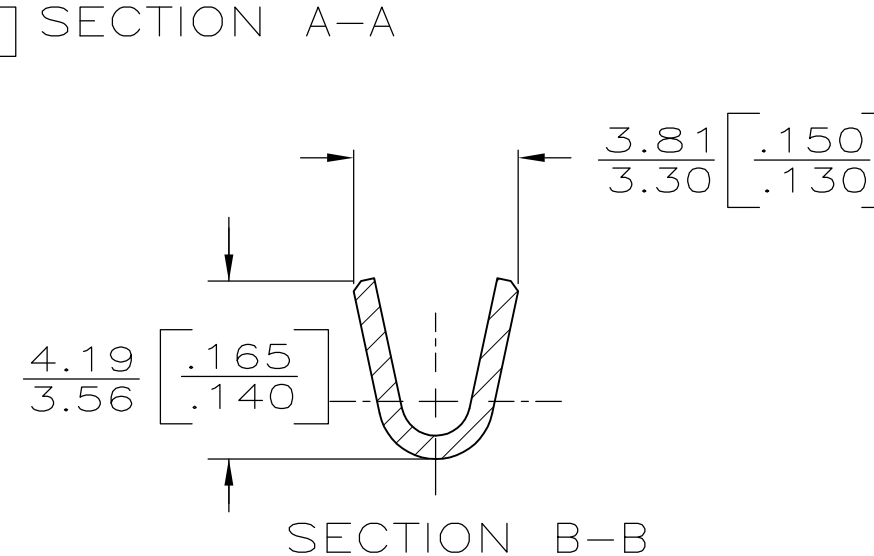
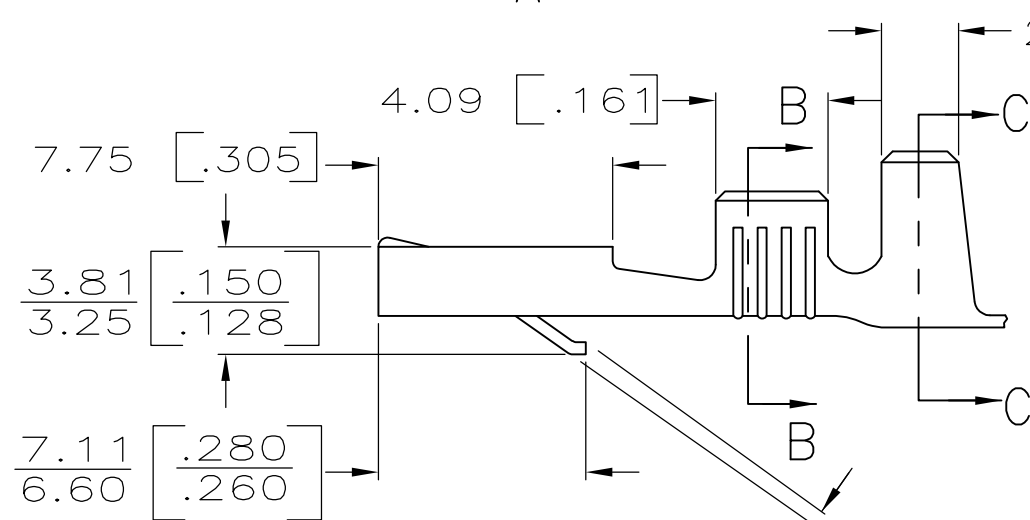
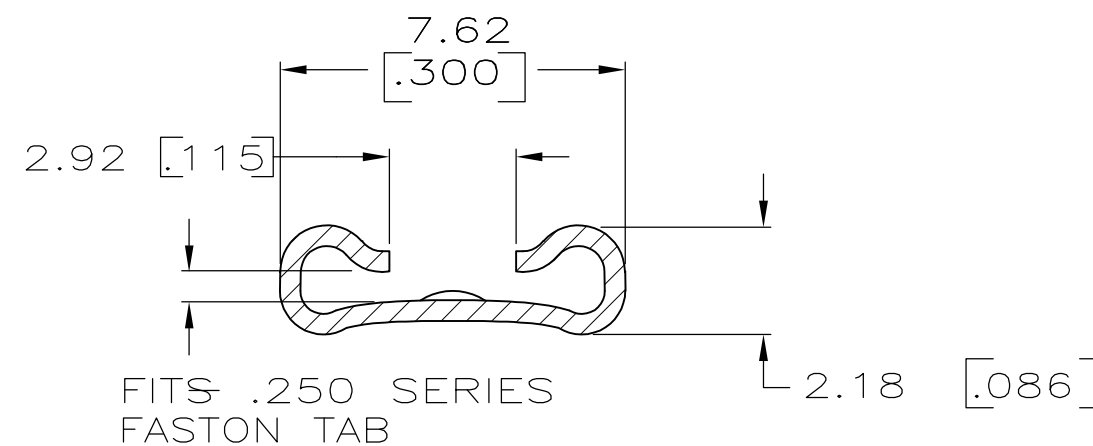
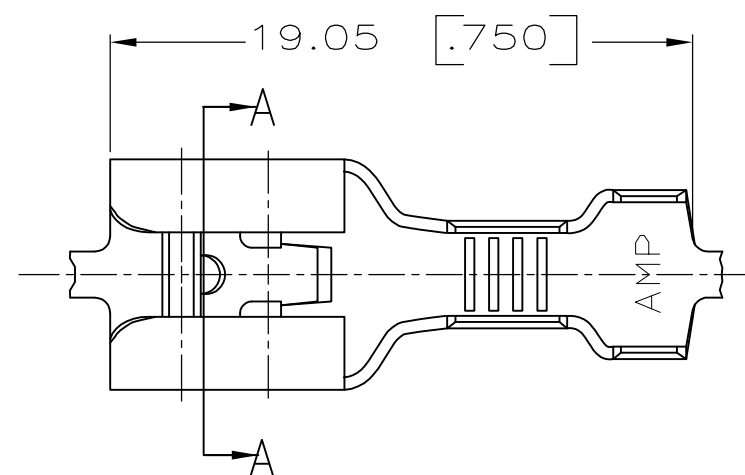
28AUG2013

KH

PD

1 DIMENSIONS IN BRACKETS ARE IN INCHES.


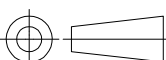
2 CONTINUOUS STRIP ON REELS.



0.64 [.025] MAX ALLOWED —
IN DIRECTION OF CONTACT ONLY.

OBSOLETE	TIN	2.29-4.45 [.090-.175] OR (2) 2.50 [.100]	0.8-2.0 MM ² [18-14] OR (2) 0.8 MM ² [#18]	0.8 1 ^{±.025} [.032 ±.001]	62530-2
	—	2.29-4.45 [.090-.175] OR (2) 2.50 [.100]	0.8-2.0 MM ² [18-14] OR (2) 0.8 MM ² [#18]	0.8 1 ^{±.025} [.032 ±.001]	62530-1
	FINISH	INSULATION RANGE	WIRE SIZE	TAB THK.	PART NO.

0	4.57 [.180]	5.59 [.220]	F	2.79 [.110]	1.85 [.073] 1.63 [.064] 1.47 [.058]	2.0MM ² [14] 1.3MM ² [16] 0.8MM ² [18]
TYPE	WIDTH	STRIP LENGTH ±.015	TYPE	WIDTH	±.051 [±.002] HEIGHT	WIRE
INSUL BARREL CRIMP			WIRE BARREL CRIMP			

THIS DRAWING IS A CONTROLLED DOCUMENT.		DWN JR RUTH	2/3/86	<div>TE Connectivity</div>			
		CHK MS FEHER	2/3/86				
DIMENSIONS: INCHES	TOLERANCES UNLESS OTHERWISE SPECIFIED:	APVD C MEYERS	2/3/86	NAME			
	0 PLC ± — 1 PLC ± — 2 PLC ± — 3 PLC ± 0.38[.015] 4 PLC ± — ANGLES ± —	PRODUCT SPEC —	.250 SERIES FASTIN— FASTON RECEPTACLE				
		APPLICATION SPEC —	SIZE	CAGE CODE	DRAWING NO	RESTRICTED	
	MATERIAL BRASS	FINISH SEE TABLE	WEIGHT —	A3	00779	C-62530	—
CUSTOMER DRAWING				SCALE	NTS	SHEET 1 OF 1	REV N