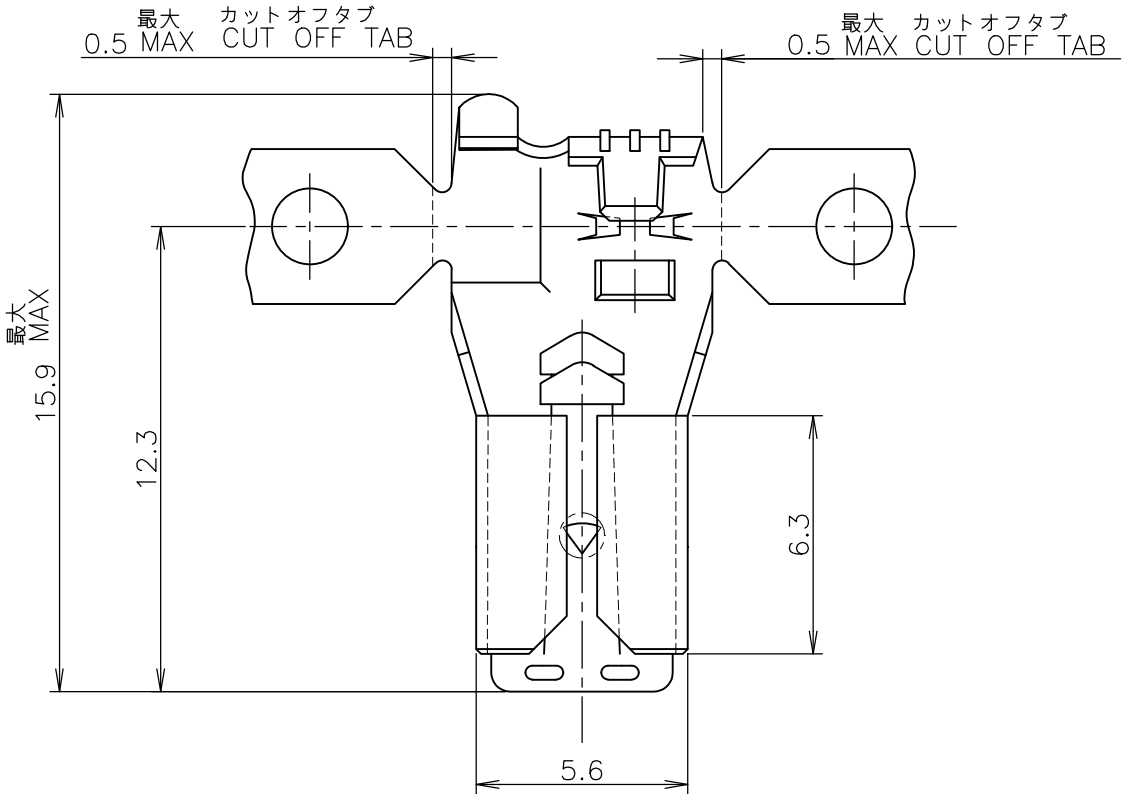
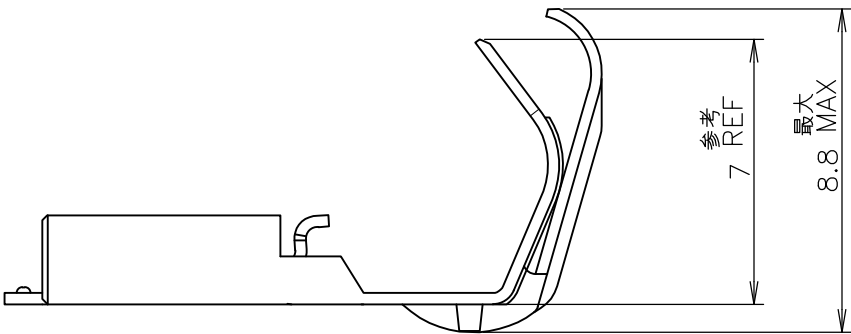
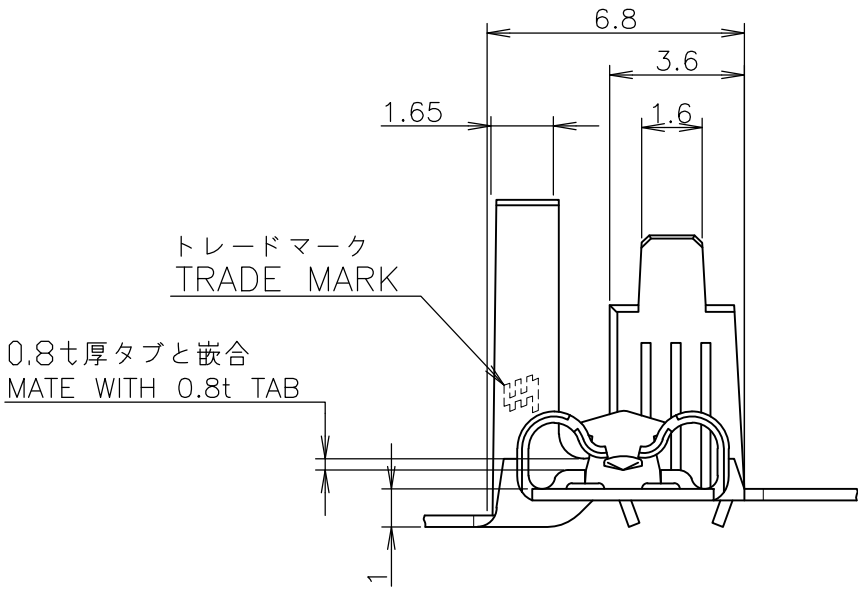


LOC	DIST	REVISIONS					
		P	LTR	DESCRIPTION	DATE	DWN	APVD
J	/		C3	REVISED PER ECO-17-017111	27NOV2017	HG	TD



1 SLEEVE P/N *-174816-* IS APPLICABLE
BUT ONE TOUCH SLEEVE P/N *-178708-* IS NOT APPLICABLE

1 スリーブ型番 *-174816-* は適用可
但しワンタッチスリーブ型番 *-178708-* は適用不可



BRASS		175193-2	
PRE TINNED BRASS 0.3t 錫めっき済み黄銅 0.3t		175193-1	
MATERIAL 材質		P/N 型番	
WIRE RANGE 抱合電線断面積	AWG #22-#16 0.3~1.42 mm ²	INSULATION DIA 被覆外径	1.5~4.32 mmø

TE Connectivity			
187 SERIES FLAG POSITIVE LOCK-EX REC. 0.8 THK TAB 187シリーズ旗型ポジティブロッカーEXリセプタクル 0.8tタブ用			
SIZE	CAGE CODE	DRAWING NO 番号	RESTRICTED TO
A3	0	C-175193	-
SCALE 尺度		SHEET 1 OF 1	REV C3

THIS DRAWING IS A CONTROLLED DOCUMENT.		DWN T.HATANO	05DEC2001
		CHK M.SHINDO	05DEC2001
		APVD M.SHINDO	05DEC2001
		PRODUCT SPEC 製品規格	108-5250
		APPLICATION SPEC 取付適用規格	114-5118
		WEIGHT	0.52
CUSTOMER DRAWING			

GENERAL TOLERANCE 一般公差
10 ≥ : ±0.2
30 ≥ > 10: ±0.25
100 ≥ > 30: ±0.3
ANGLES: ±3°

DIMENSIONS: 単位: 耗 mm	TOLERANCES UNLESS OTHERWISE SPECIFIED: 一般公差
0 PLC ±	1 PLC ±
2 PLC ±	3 PLC ±
4 PLC ±	ANGLES ±
MATERIAL 材料	FINISH 仕上
表参照 SEE TABLE	