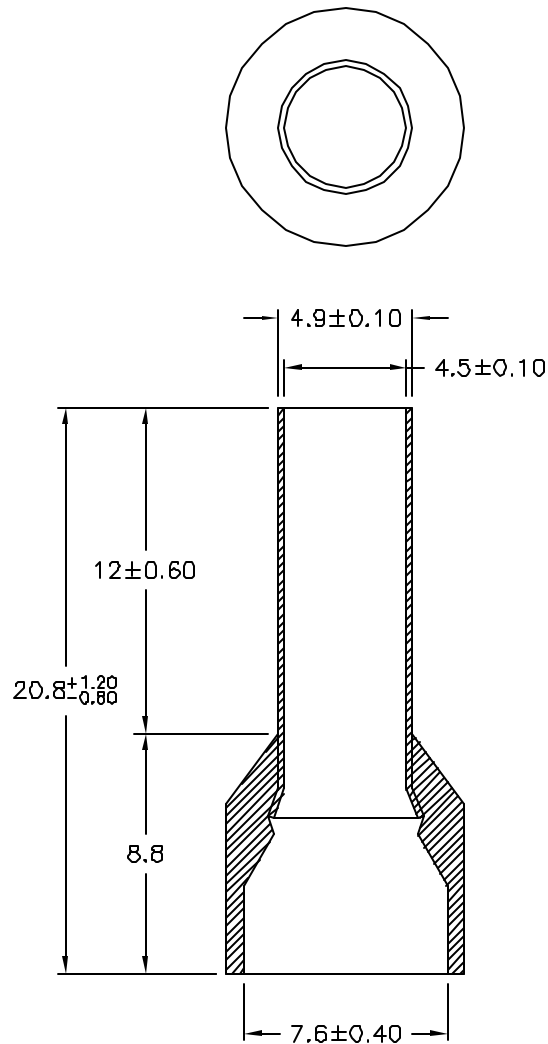


REVISIONS

DOC. NO. SPC-F005 * Effective: 7/5/02 * DCP No: 1398

DCP #	REV	DESCRIPTION	DRAWN	DATE	CHECKD	DATE	APPRVD	DATE
2022	A	RELEASED	JN	1/07/09	JWM	1/07/09	JWM	1/07/09



NOTE:

1. MAXIMUM ELECTRIC CURREENT: $\frac{\text{A.W.G.}}{\text{AMP.}} \left| \begin{matrix} 8 \\ 70 \end{matrix} \right|$
2. MAXIMUM ELECTRICAL RATING: 105°C 600 VOLTS MAX.
3. INSULATION MATERIAL: NYLON
4. INSULATION COLOR: RED
5. CONNECTOR MATERIAL: COPPER TUBE
6. WIRE RANGE: 8 A.W.G (10 mm²)
7. SURFACE TREATMENT: TIN PLATED

DISCLAIMER:
ALL STATEMENTS AND TECHNICAL INFORMATION CONTAINED HEREIN ARE BASED UPON INFORMATION AND/OR TESTS WE BELIEVE TO BE ACCURATE AND RELIABLE. SINCE CONDITIONS OF USE ARE BEYOND OUR CONTROL, THE USER SHALL DETERMINE THE SUITABILITY OF THE PRODUCT FOR THE INTENDED USE AND ASSUME ALL RISK AND LIABILITY WHATSOEVER IN CONNECTION THEREWITH.

TOLERANCES:

UNLESS OTHERWISE SPECIFIED, DIMENSIONS ARE FOR REFERENCE PURPOSES ONLY.

DRAWN BY:

Jason Nash

DATE:

1/07/09

CHECKED BY:

Jeff McVicker

DATE:

1/07/09

APPROVED BY:

Jeff McVicker

DATE:

1/07/09

DRAWING TITLE:

NYLON-Insulationed Cord End Terminal

SIZE

A

DWG. NO.

MC29642

ELECTRONIC FILE

40P3678.dwg

REV

A

SCALE: NTS

U.O.M.: INCHES [mm]

SHEET: 1 OF 1