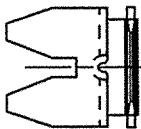
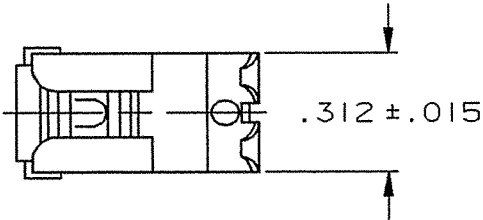


DEPT	
1	2
2	
3	
4	2
5	
6	
7	
8	
9	
10	
11	
12	
NC	
JZ	

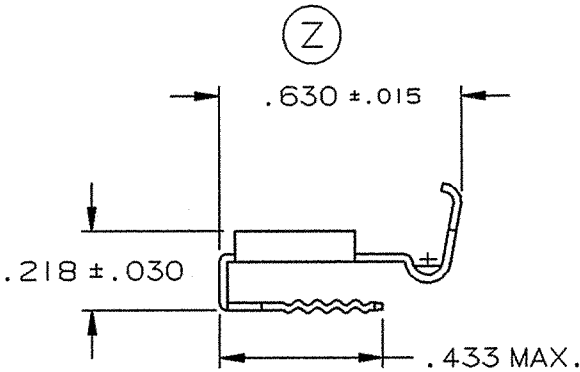
PART NAME: TERMINAL, FEMALE & MALE

PART NO: 3000H 421A/

PART NUMBER	MATERIAL	FINISH	WINDING
3000H 421A	.020 THICK BRASS	PRETINNED	SEE FIGURE 1
3000H 421AR		PRETINNED	SEE FIGURE 2
3000H 421AB		NONE	SEE FIGURE 1
3000H 421ABR		NONE	SEE FIGURE 2



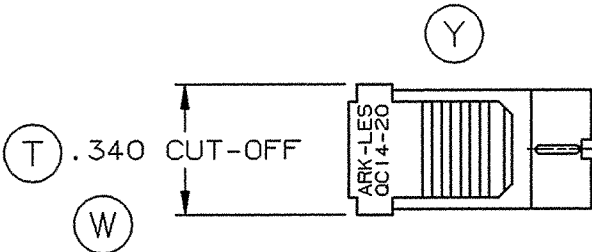
U



- NOTES:
- 1. TO ACCOMMODATE #14-#20 GAUGE WIRE.
 - 2. RECOMMENDED STRIP LENGTH: 11/32 ± 1/32.
 - 3. TO ACCEPT .250 MALE TAB & .250 RECEPTACLE.
 - 4. FOR LOOSE PIECE PARTS ADD SUFFIX "-1" TO PART NUMBER (i.e. 3000H 421A-1).

U

T



ARK-LES LETTERING THIS SIDE

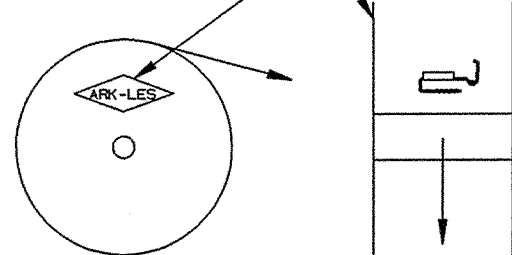


FIGURE 1

ARK-LES LETTERING THIS SIDE

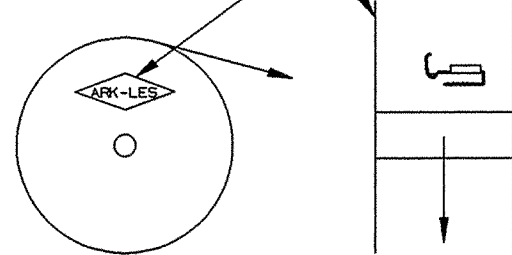
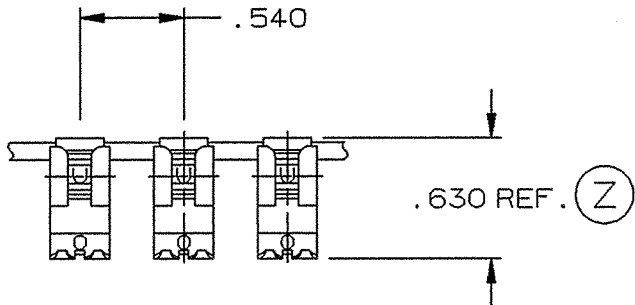


FIGURE 2

ARK-LES
UNCONTROLLED



FABRICATED TERMINAL STRIP
SCALE 1=1

REV.	DESCRIPTION	DATE	DR.	PROD. REL.	PER DG	5/29/74	PC	TOLERANCES UNLESS OTHERWISE SPECIFIED:		
Z	REVISED PER ECR #S000020	9/24/03	RT	QUOTE REL.				DECIMALS ±.010	METRIC ±0.25mm	ANGLES ±1°
Y	REVISED PER ECR #12451	1/28/03	RT	DR: B J CARUTHERS	2/8/96			MATERIAL: SEE TABLE		
W	REVISED PER ECR #11789	6/11/99	RT	CHK'D: <i>DO 11/4/03</i>				FINISH: SEE TABLE		
U	REVISED PER ECR #11288	5/21/97	RT	APP: <i>11-4-03</i>				PART NO: 3000H 421A/		
T	REVISED & REDRAWN PER ECR #10794	2/8/96	BJC	SUPERCEDES DWG. DATED: 3/5/92						
				SCALE: 2=1	CAD NO: BT00012					

ORIGINAL IF RED