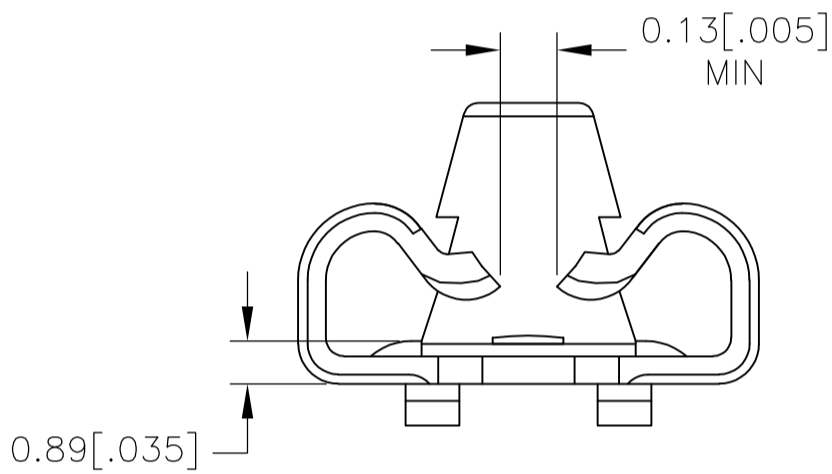
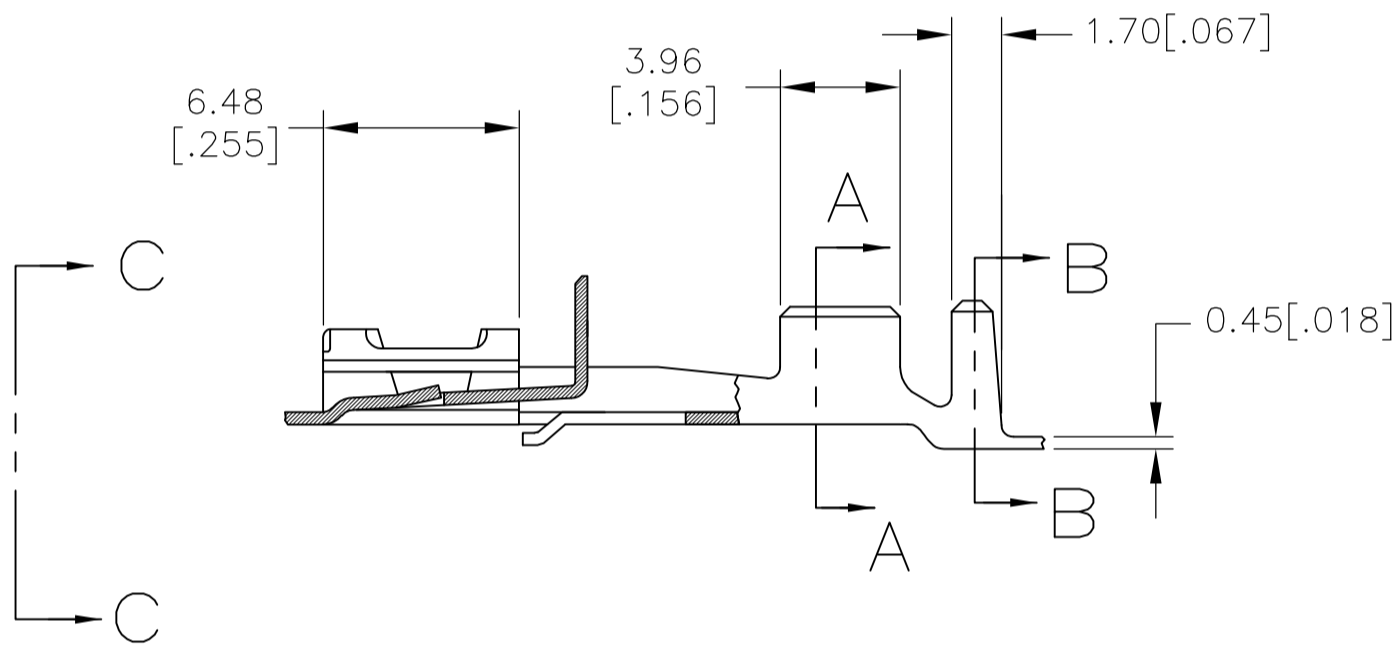
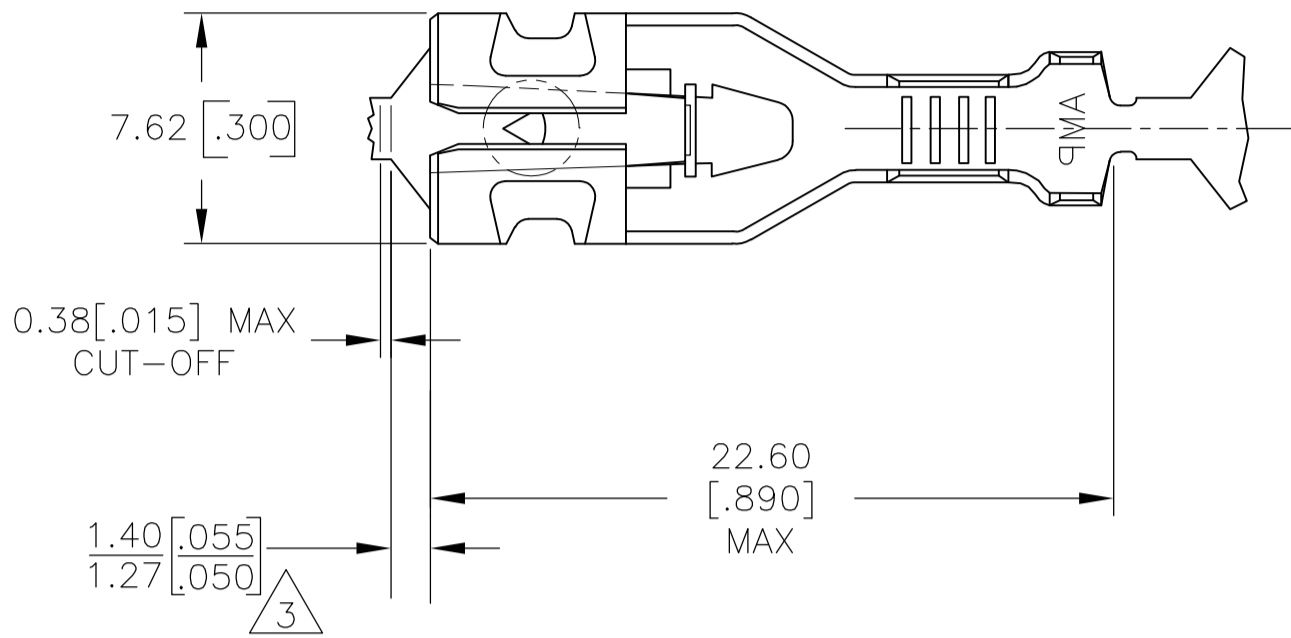
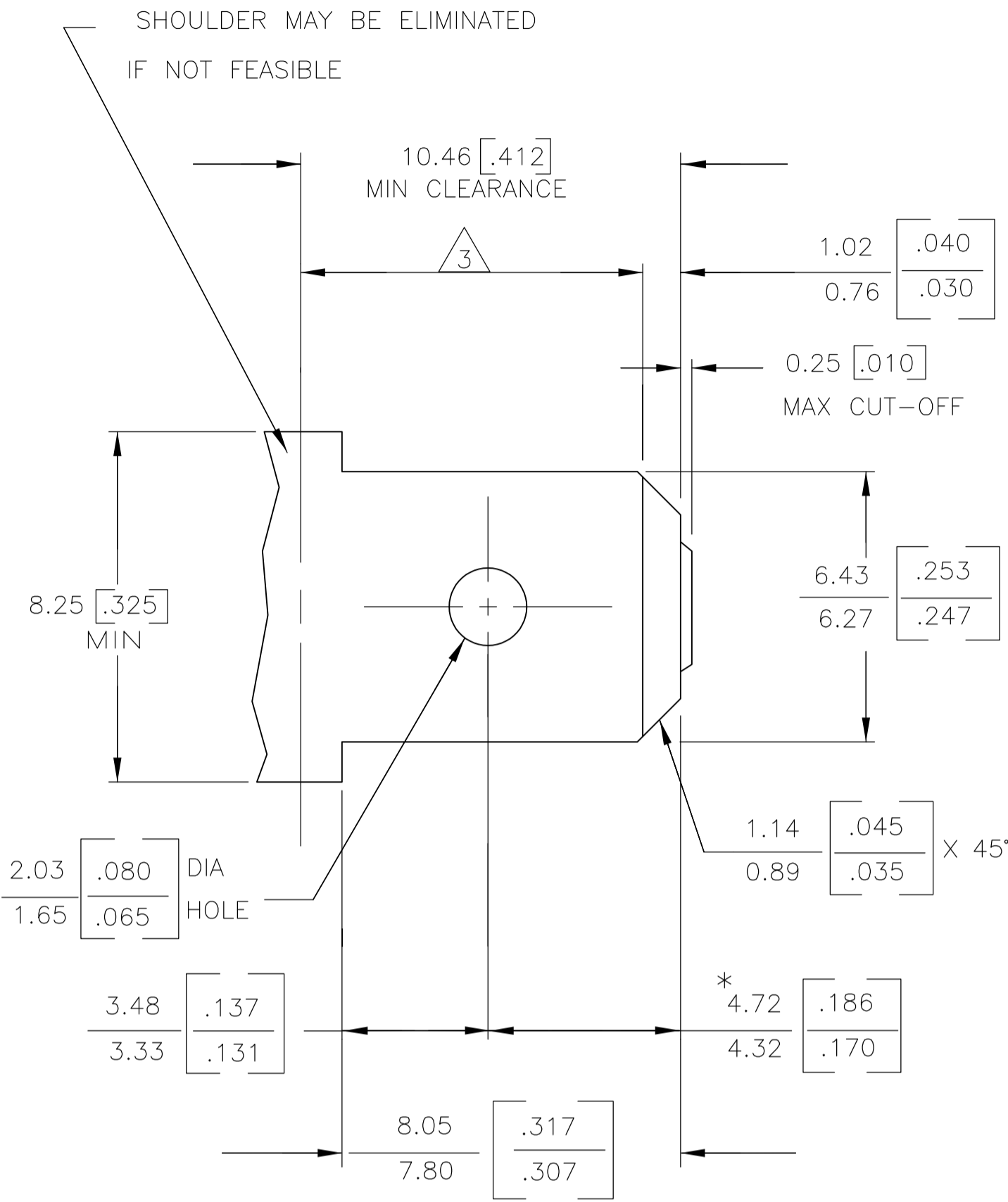


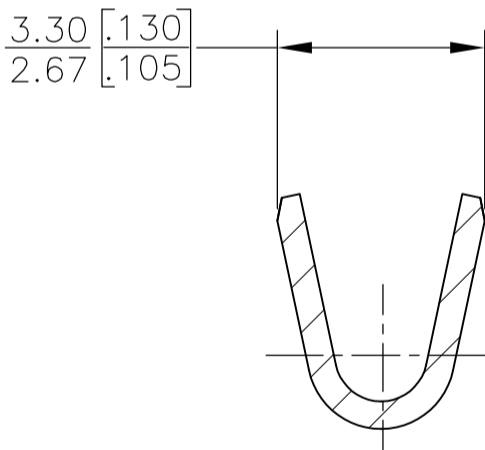
REVISIONS					
REV	LTR	DESCRIPTION	DATE	DWN	APVD
1	A1	REVISED PER ECR-17-006852	23MAY2017	BW	MD

# SUGGESTED MATING TAB

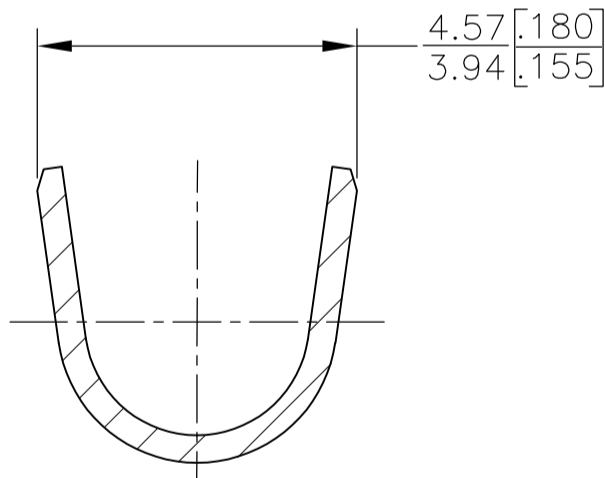


VIEW C—C

- 1 MATL: ½ H BRASS OR NICKEL PL STEEL.
  - 2 NO BURRS PERMISSIBLE AT HOLE.
  - 3 MUST BE FLAT WITHIN 0.076 [.003] OVER THIS LENGTH.
  - 4 TIN PLATING IS REQUIRED ON BRASS WHEN TERMINAL TEMP. IS OVER 225°F
  - 5 HOLE MUST BE SYMMETRICAL ABOUT TAB Q<sub>L</sub> WITHIN 0.076 [.003]
- \* TO BE USED ONLY WHEN SHOULDER IS ELIMINATED.



SECTION A—A  
SCALE 8:1



SECTION B—B  
SCALE 8:1

1.52–2.54 [.060–.100] DIA		#22–#18 AWG	2238139–1
INSULATION RANGE		WIRE SIZE	PART NUMBER
THIS DRAWING IS A CONTROLLED DOCUMENT.		DWN PASVESH WARAD 25NOV2016 CHK MIKE DIDONATO 25NOV2016 APVD MIKE DIDONATO 25NOV2016	TE Connectivity
DIMENSIONS: mm[INCHES]		PRODUCT SPEC 108–143022	RECPT, POSITIVE LOCK, .250 SERIES
TOLERANCES UNLESS OTHERWISE SPECIFIED:		APPLICATION SPEC 114–2074	NAME
0 PLC ± .01 1 PLC ± .01 2 PLC ± .01 3 PLC ± .01 4 PLC ± .01 ANGLES ± 1°		SIZE A1	CAGE CODE 00779
MATERIAL -		WEIGHT 0	DRAWING NO 2238139
CUSTOMER DRAWING		SCALE 4:1	SHEET 1 OF 1 REV A1