

13

12

11

10

9

8

7

6

5

4

3

2

1

J

I

H

G

F

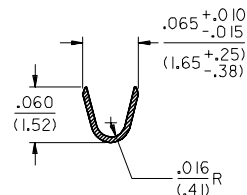
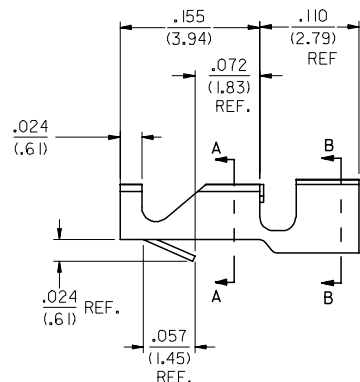
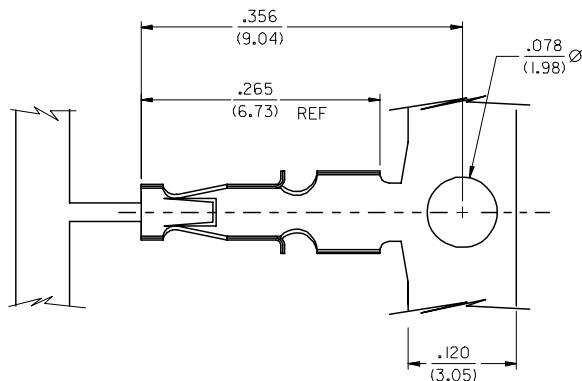
E

D

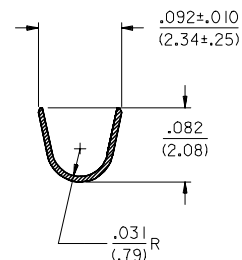
C

B

A



SECTION A-A

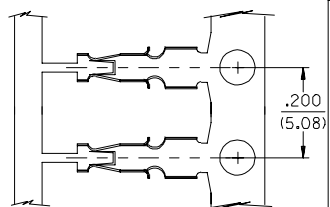
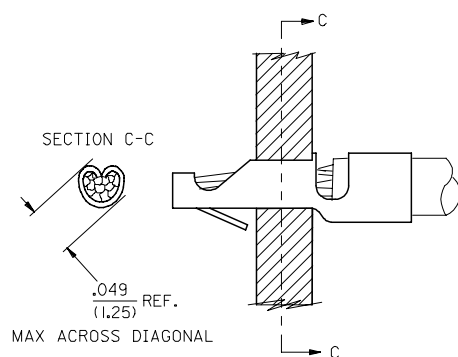


SECTION B-B

NOTES:

1. MATERIAL: (.015±.01)/.006±.0004 BRASS ALLOY 260
2. TERMINALS CONFORM TO SOLERABILITY SPEC I52
3. TERMINAL FOR USE WITH 22-26 AWG STRANDED WIRE OR 22 AWG SOLID WIRE. INSULATION DIA (.152)/.060 MAX
4. WIND PER ES-339-B
5. PLATING PER SDES-88
(909) • OVERALL HOT TIN DIP: .00254 MICROMETERS MIN.
6. RECOMMENDED PC BOARD HOLE SIZE: (.129±.05) / .051±.002 DIA.
7. RECOMMENDED PC BOARD THICKNESS: (.157±.20) / .062±.008
8. PRODUCT SPECIFICATION: PS-4706-001
9. ENG. NO. 42001-0004 AVAILABLE IN MOLEX BRAZIL ONLY.

*THE PRIMARY SHIPPING CARTON WILL BE LABELED "COMPLIANT TO RoHS DIRECTIVE 2002/95/EC AND ELV ANNEX II OF DIRECTIVE 2000/53/EC." CARTONS WITHOUT THIS LABEL MAY CONTAIN PRODUCT WITH TIN-LEAD PLATING.



SEE NOTE 9

EDP NO.	ENG NO.	PLT
040-08-0605	42001-0001	P909
040-02-0601	42001-0002	I22
040-01-0610	42001-0003	999
040-08-0606	42001-0004	P224

CHANGE TO ME10
EC NO: UCP2005-0966
2004/11/19
DRAWN: ADRIANOL
CHKD: SAMIEC 2008/11/08/19
APPR: MARGULIS 2008/11/08/19

QUALITY SYMBOLS
▽=0
▽=0

GENERAL TOLERANCES (UNLESS SPECIFIED)	
mm	INCH
4 PLACES ± ---	± ---
3 PLACES ± ---	± .010
2 PLACES ± 0.38	± .015
1 PLACE ± ---	± ---
ANGULAR ±1/2°	
DRAFT WHERE APPLICABLE MUST REMAIN WITHIN DIMENSIONS	

DIMENSION STYLE	
IN/MM	DATE
DRAWN BY	DATE
KSAMIEC	09/09/94
CHECKED BY	DATE
APATEL	09/09/94
APPROVED BY	DATE
BLENZ	09/09/94
MATERIAL NO.	DOCUMENT NO.
SEE CHART	SD-42001

SCALE	DESIGN UNITS	THIRD ANGLE PROJECTION
---	INCH	
TERMINAL STRAIN RELIEF (5.08)/2.00 CENTERS		
MOLEX INCORPORATED		
SHEET NO. 1 OF 1		

12

11

10

9

8

7

6

5

4

3

2

1