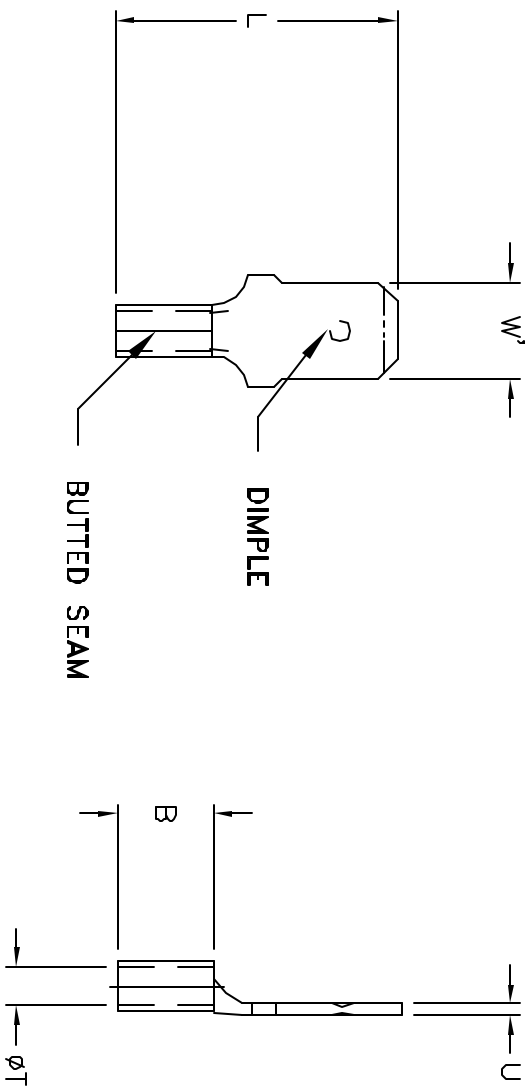


ALL RIGHTS RESERVED. NO PORTION OF THIS PUBLICATION, WHETHER IN WHOLE OR IN PART CAN BE REPRODUCED WITHOUT THE EXPRESS WRITTEN CONSENT OF SPC TECHNOLOGY.

REVISIONS					DOC. NO.	SPC-FD05	Effective:	12/21/98	DCP No.	880
DCP #	REV	DESCRIPTION	DRAWN	DATE	CHECKD	DATE	APPRVD	DATE		
	A	Redrawn in Autocad	JAP	12/10/91						
1199	B	Electronic file renamed	JWM	3/1/02	JC	3/1/02	JC	3/1/02		



PART NUMBER	WIRE RANGE (AWG)	MALE TAB WIDTH (W') X THICKNESS	L	B	T	U
CMS-TO-1425-HT	16-14	.250 x .032	.73	.25	.090	.032

NOTES:

1. MATERIAL: NICKEL-PLATED ALLOY STEEL
2. CONTINUOUS OPERATING TEMPERATURE: 900°F(482°C)  
INTERMITTENT OPERATING TEMPERATURE: 1200°F(649°C)
3. VOLTAGE RATING: 600 V
4. TO BE FREE OF BURRS.

**DISCLAIMER**  
ALL STATEMENTS AND TECHNICAL INFORMATION CONTAINED HEREIN ARE BASED UPON INFORMATION AND/OR TESTS WE BELIEVE TO BE ACCURATE AND RELIABLE. SINCE CONDITIONS OF USE ARE BEYOND OUR CONTROL, THE USER SHALL DETERMINE THE SUITABILITY OF THE PRODUCT FOR THE INTENDED USE AND ASSUME ALL RISK AND LIABILITY WHATSOEVER IN CONNECTION THEREWITH.



DRAWING TITLE: High Temperature Terminal, Quick Connect

DRAWN BY:	DATE:
JC	3/1/91
CHECKED BY:	DATE:
JOHN COLE	12/10/91
APPROVED BY:	DATE:
J Liszka	12/10/91

SIZE	DWG. NO.	ELECTRONIC FILE	REV
A	CMS-TO-1425-HT	81N1493.dwg	B
SCALE:	NTS	U.O.M.: INCHES [mm]	SHEET: 1 OF 1