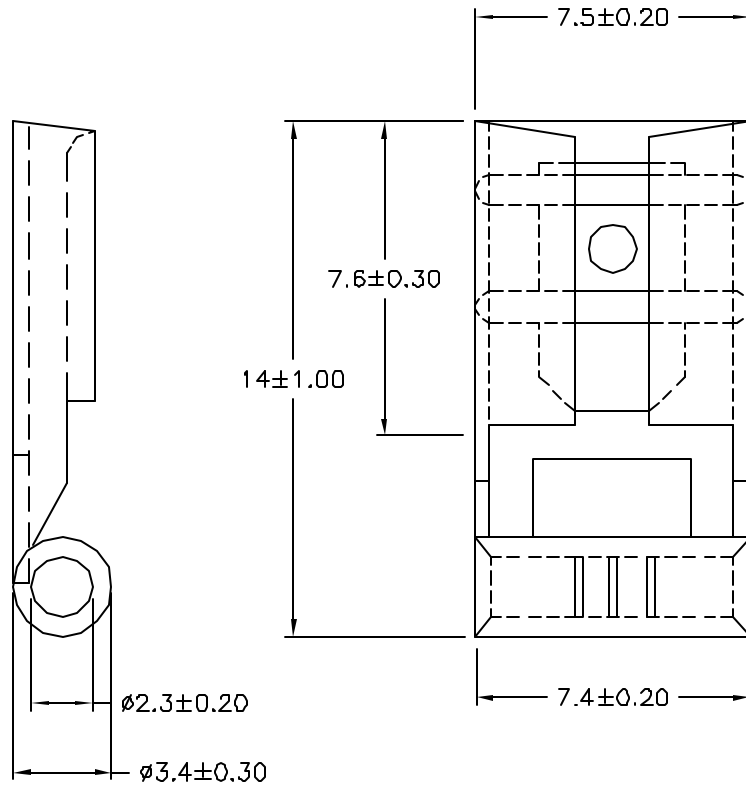


REVISIONS

DOC. NO. SPC-F008 * Effective: 7/8/02 * DCP No: 1398

| DCP # | REV | DESCRIPTION | DRAWN | DATE | CHECKD | DATE | APPRVD | DATE |
|-------|-----|-------------|-------|---------|--------|---------|--------|---------|
| 2022 | A | RELEASED | JN | 1/07/09 | JWM | 1/07/09 | JWM | 1/07/09 |
| | | | | | | | | |



NOTE:

1. MAXIMUM ELECTRIC CURREENT: $\frac{\text{A.W.G.}}{\text{AMP.}}$

| | |
|----|----|
| 16 | 14 |
| 10 | 15 |
2. WIRE RANGE: 16-14 A.W.G (1.5-2.5 mm²)
3. NEMA TAB: 0.032 INCHES * 0.250 INCHES (0.8 mm * 6.35 mm)
4. TERMINAL SURFACE TREATMENT: TIN PLATED
5. TERMINAL THICKNESS: 0.40mm

DISCLAIMER:
ALL STATEMENTS AND TECHNICAL INFORMATION CONTAINED HEREIN ARE BASED UPON INFORMATION AND/OR TESTS WE BELIEVE TO BE ACCURATE AND RELIABLE. SINCE CONDITIONS OF USE ARE BEYOND OUR CONTROL, THE USER SHALL DETERMINE THE SUITABILITY OF THE PRODUCT FOR THE INTENDED USE AND ASSUME ALL RISK AND LIABILITY WHATSOEVER IN CONNECTION THEREWITH.

TOLERANCES:

UNLESS OTHERWISE SPECIFIED, DIMENSIONS ARE FOR REFERENCE PURPOSES ONLY.

DRAWN BY:

Jason Nash

DATE:

1/07/09

CHECKED BY:

Jeff McVicker

DATE:

1/07/09

APPROVED BY:

Jeff McVicker

DATE:

1/07/09

DRAWING TITLE:

Terminal

SIZE

A

DWG. NO.

MC29419

ELECTRONIC FILE

34P2187.dwg

REV

A

SCALE: NTS

U.O.M.: INCHES [mm]

SHEET: 1 OF 1