



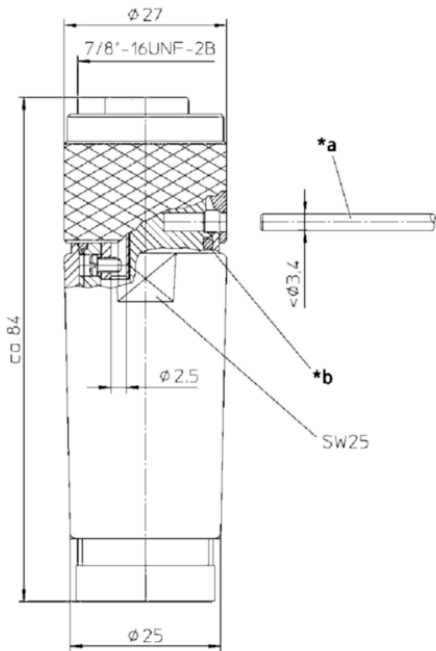
Product: [RKC 50/13.5](#) 

7/8" Power Field Attachable Connector: Female, straight, 5-pin(4+PE), black housing, 230 V AC/DC, 9 A

Product Description

7/8" Power Field Attachable Connector: Female, straight, 5-pin(4+PE), black housing, 230 V AC/DC, 9 A

Technical Drawing



Typ/ type	Polzahl/ number of poles	Kabelverschraubung/ screw joint for cable
RKC 30/9	<div><div>3</div><div><div><div>1</div><div>3</div><div>2</div></div><div><div><div><div></div><div></div><div></div></div><div><div><div></div><div></div><div></div></div></div></div></div></div></div>	ϕ 6 - 8mm
RKC 30/11		ϕ 8 - 10mm
RKC 30/13,5		ϕ 10 - 12mm
RKC 30/16		ϕ 12 - 14mm
RKC 40/9	<div><div>4</div><div><div><div>3</div><div>1</div><div>4</div><div>2</div></div><div><div><div><div></div><div></div><div></div><div></div></div><div><div><div></div><div></div><div></div><div></div></div></div></div></div></div></div>	ϕ 6 - 8mm
RKC 40/11		ϕ 8 - 10mm
RKC 40/13,5		ϕ 10 - 12mm
RKC 40/16		ϕ 12 - 14mm
RKC 50/9	<div><div>5</div><div><div><div><div>3</div><div>1</div><div>2</div><div>4</div><div>5</div></div><div><div><div><div></div><div></div><div></div><div></div><div></div></div><div><div><div></div><div></div><div></div><div></div><div></div></div></div></div></div></div></div></div>	ϕ 6 - 8mm
RKC 50/11		ϕ 8 - 10mm
RKC 50/13,5		ϕ 10 - 12mm
RKC 50/16		ϕ 12 - 14mm

Technical Specifications

Technical Data

Product Family:	Power Connector
Product Sub Family:	7/8" Circular Connectors
Brand:	Lumberg Automation
Connector Type:	Field Attachable
Type of Contact / Gender:	female
Connector Design:	straight
Number of Pins:	5(4+PE)
Shielding:	Unshielded
Attachment Type:	Coupling nut with external threads
Rated Voltage:	250 V AC/DC
Operating Voltage:	230 V AC/DC
Rated Current:	9 A
Contact Resistance:	≤ 10 mOhm
Insulation Resistance:	> 10^9 Ohm
Type of Connection:	screw terminal
Cable Gland:	PG 13.5
Conductor Cross Section:	max. 1.5 mm²
Ambient Temperature (Operation):	-40 °C to +90 °C
Protection Degree / IP Rating:	IP67
Pollution Degree:	3 acc. to DIN EN 60664-1 (VDE 0110-1)

Materials

Contact Base Material:	CuZn
Contact Plating:	Cu/Au
Contact Bearer Material:	TPU
Contact Bearer Color:	black
Housing Material:	PA 66
Housing Color:	black
Attachment Material:	Al (anodized) black
O-Ring Material:	NBR

Approvals

UL-File:	E104696
UL:	cULus

Safety & Environmental Compliance

RoHS Compliant:	yes
-----------------	-----

Notes

Protection Degree / IP Rating Note:	* only if mounted and locked in combination with Hirschmann / Lumberg connector.
Note Derating:	* Notice derating
Note:	Do not connect / disconnect under load.

Variants

Item #	Item Description
11223	RKC 50/13,5

