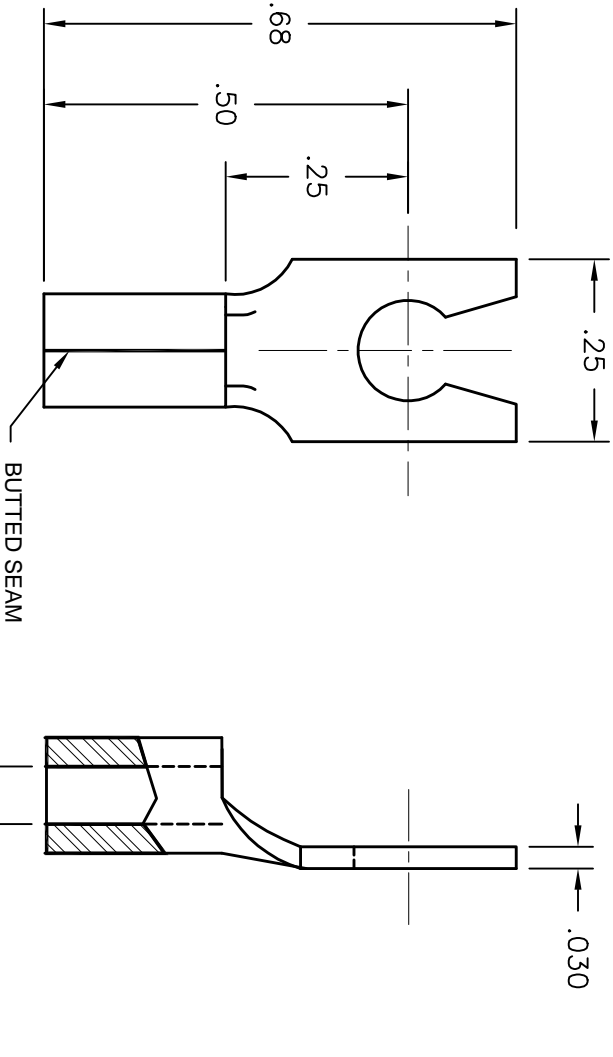


ALL RIGHTS RESERVED. NO PORTION OF THIS PUBLICATION, WHETHER IN WHOLE OR IN PART CAN BE REPRODUCED WITHOUT THE EXPRESS WRITTEN CONSENT OF SPC TECHNOLOGY.

REVISIONS			DOC. NO. SPC-F005 * Effective: 12/21/98 * DCP No: 680					
DCP #	REV	DESCRIPTION	DRAWN	DATE	CHECKD	DATE	APPRVD	DATE
963	B	Redrawn Obsolete parts removed	JWM	3/27/01	JC	4/25/01	JC	4/25/01



NOTES:

1. MAXIMUM CURRENT: SAME AS WIRE
2. TEMPERATURE RANGE: 175 °C/347 °F MAX.
3. STRIP AWAY THE END 3/4 INCHES OF WIRE INSULATION
4. TERMINAL MATERIAL: ETP COPPER
5. TERMINAL PLATING: TIN
6. UL LISTED AND CSA CERTIFIED FOR USE ON STRANDED COPPER (AWG) WIRE ONLY
7. STUD SIZE #6



ES9918



LR22190M6

OSHA
Acceptable

DISCLAIMER:
ALL STATEMENTS AND TECHNICAL INFORMATION CONTAINED HEREIN ARE BASED UPON INFORMATION AND/OR TESTS WE BELIEVE TO BE ACCURATE AND RELIABLE SINCE CONDITIONS OF USE ARE BEYOND OUR CONTROL. THE USER SHALL DETERMINE THE SUITABILITY OF THE PRODUCT FOR THE INTENDED USE AND ASSUME ALL RISK AND LIABILITY WHATSOEVER IN CONNECTION THEREWITH.

Tolerances Unless
Otherwise Specified

Decimals

.X ± 0.015

.XX ± 0.010

.XXX ± 0.005

DRAWN BY:

MO

CHECKED BY:

APPROVED BY:

DO

DATE:

4/5/84

DATE:

DATE:

DRAWING TITLE:

NON-INSULATED LOCKING FORK TERMINAL

SIZE DWG. NO.

A

CLS-TO-1806

ELECTRONIC FILE

31N2850.dwg

REV

B

SCALE: NTS

U.O.M.: Inches

SHEET:

1 OF 1



SPC TECHNOLOGY