

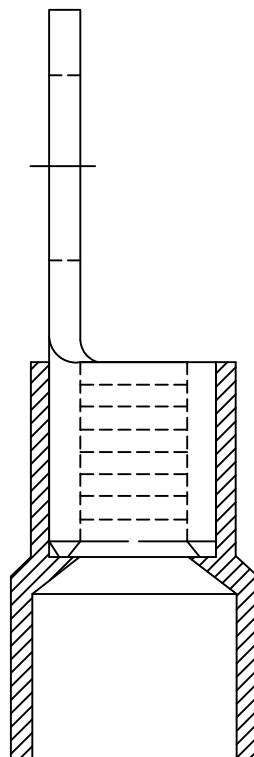
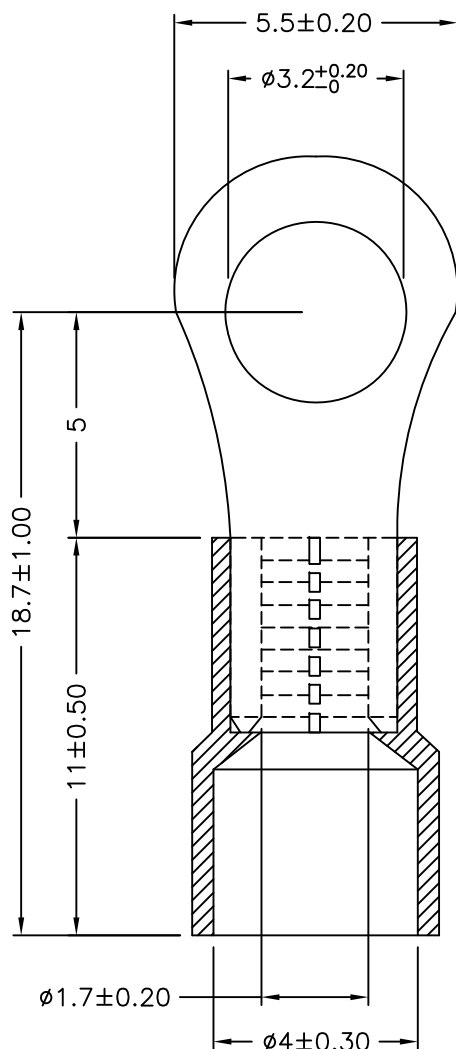
REVISIONS

DOC. NO. SPC-F005 * Effective: 7/8/02 * DCP No: 1398

DCP #	REV	DESCRIPTION	DRAWN	DATE	CHECKD	DATE	APPRVD	DATE
2022	A	RELEASED	JYC	6/23/10	JYC	6/23/10	JYC	6/23/10



File No. E327842



NOTE:

1. MAXIMUM ELECTRIC CURREENT: $\frac{A.W.G.}{AMP.}$

22	20	18	16
9	12	17	18
2. MAXIMUM ELECTRIC RATING: 105°C 600 VOLTS MAX.
3. INSULATION MATERIAL: VINYL
4. INSULATION COLOR: RED
5. TERMINAL MATERIAL: COPPER
6. WIRE RANGE: 22-16 A.W.G (0.5-1.5 mm²)
7. TERMINAL SURFACE TREATMENT: TIN PLATED
8. TERMINAL THICKNESS: 0.75mm

DISCLAIMER:
ALL STATEMENTS AND TECHNICAL INFORMATION CONTAINED HEREIN ARE BASED UPON INFORMATION AND/OR TESTS WE BELIEVE TO BE ACCURATE AND RELIABLE. SINCE CONDITIONS OF USE ARE BEYOND OUR CONTROL, THE USER SHALL DETERMINE THE SUITABILITY OF THE PRODUCT FOR THE INTENDED USE AND ASSUME ALL RISK AND LIABILITY WHATSOEVER IN CONNECTION THEREWITH.

TOLERANCES:

UNLESS OTHERWISE SPECIFIED, DIMENSIONS ARE FOR REFERENCE PURPOSES ONLY.

DRAWN BY:

Jerrold Chen

DATE:

6/23/10

CHECKED BY:

Jerrold Chen

DATE:

6/23/10

APPROVED BY:

Jerrold Chen

DATE:

6/23/10

DRAWING TITLE:

Vinyl-Insulated (Easy Entry) Ring Terminals

SIZE DWG. NO.

A

MC29552

ELECTRONIC FILE

34P2309.dwg

REV

A

SCALE: NTS

U.O.M.: mm

SHEET: 1 OF 1