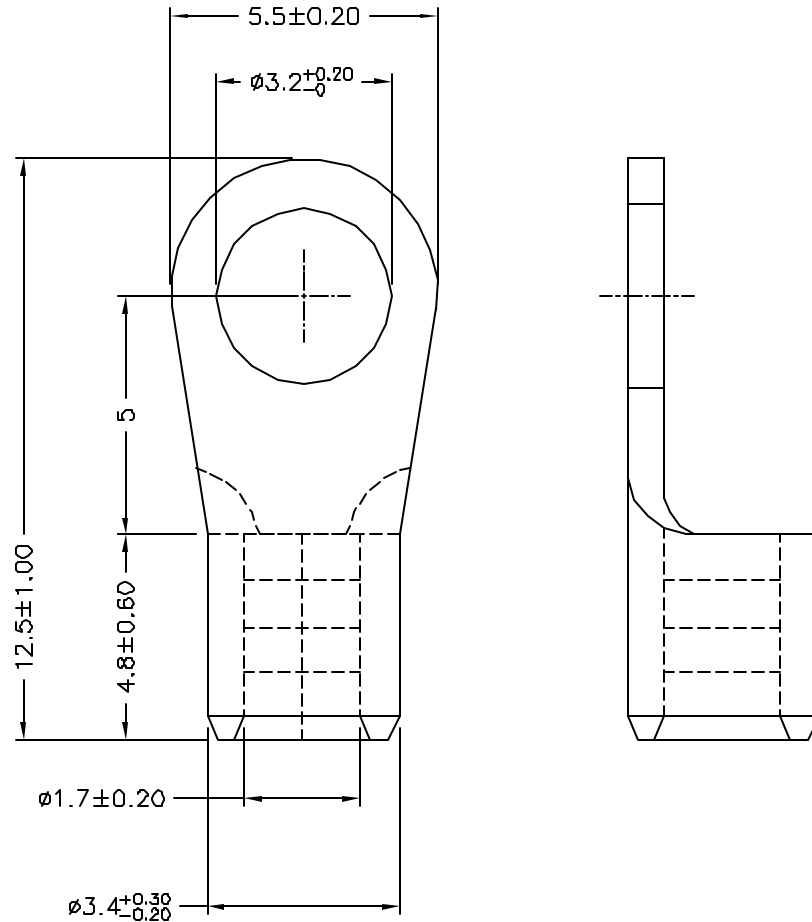


REVISIONS

DOC. NO. SPC-F005 * Effective: 7/5/02 * DCP No: 1398

| DCP # | REV | DESCRIPTION | DRAWN | DATE | CHECKD | DATE | APPRVD | DATE |
|-------|-----|-------------|-------|---------|--------|---------|--------|---------|
| 2022 | A | RELEASED | JN | 1/07/09 | JWM | 1/07/09 | JWM | 1/07/09 |
| | | | | | | | | |



NOTE:

1. MAXIMUM ELECTRIC CURREENT: $\frac{\text{A.W.G.}}{\text{AMP.}}$

| | | | |
|----|----|----|----|
| 22 | 20 | 18 | 16 |
| 9 | 12 | 17 | 18 |
2. WIRE RANGE: 22-16 A.W.G (0.5-1.5 mm²)
3. TERMINAL SURFACE TREATMENT: TIN PLATED
4. TERMINAL THICKNESS: 0.75mm

DISCLAIMER:
ALL STATEMENTS AND TECHNICAL INFORMATION CONTAINED HEREIN ARE BASED UPON INFORMATION AND/OR TESTS WE BELIEVE TO BE ACCURATE AND RELIABLE. SINCE CONDITIONS OF USE ARE BEYOND OUR CONTROL, THE USER SHALL DETERMINE THE SUITABILITY OF THE PRODUCT FOR THE INTENDED USE AND ASSUME ALL RISK AND LIABILITY WHATSOEVER IN CONNECTION THEREWITH.

TOLERANCES:

UNLESS OTHERWISE SPECIFIED, DIMENSIONS ARE FOR REFERENCE PURPOSES ONLY.

DRAWN BY:

Jason Nash

DATE:

1/07/09

DRAWING TITLE:

Terminal

CHECKED BY:

Jeff McVicker

DATE:

1/07/09

APPROVED BY:

Jeff McVicker

DATE:

1/07/09

SIZE

A

DWG. NO.

MC29489

ELECTRONIC FILE

34P2247.dwg

REV

A

SCALE: NTS

U.O.M.: INCHES [mm]

SHEET: 1 OF 1