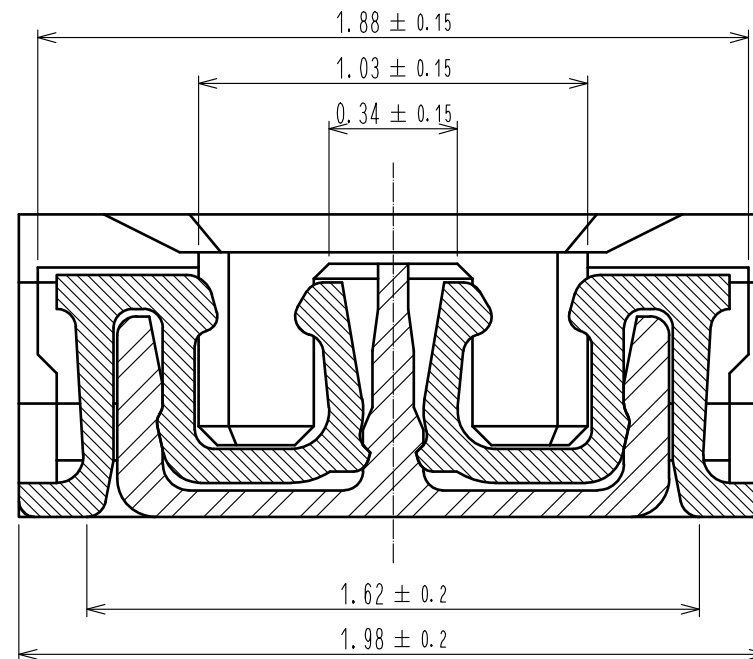
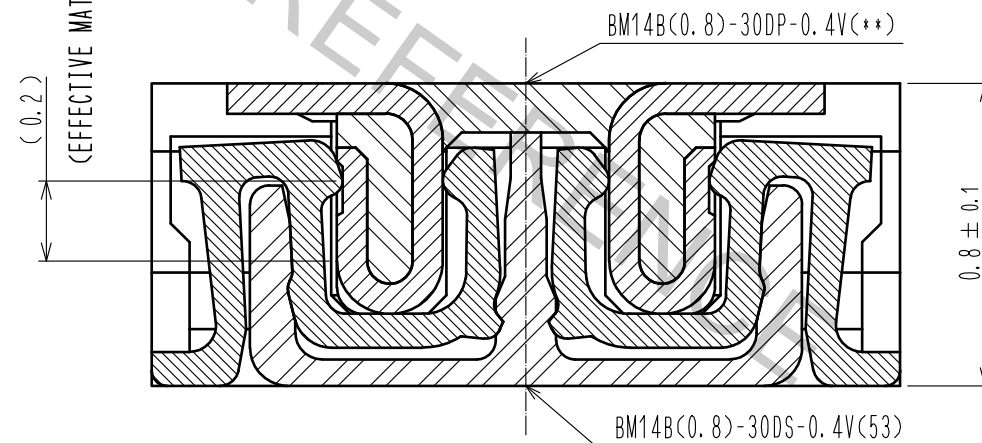


- NOTE) 1. ALL LEAD CO-PLANARITY SHALL BE 0.08mm MAX  
2. CONTACT PLATING SPECIFICATIONS.  
CONTACT AREA : GOLD 0.05 μm MIN  
SMT LEAD : GOLD 0.05 μm MIN  
UNDERPLATING : NICKEL 1 μm MIN  
( SURFACE : SEALING )  
3. EACH CONTACTS AT 4 CORNERS ARE PROVIDED FOR METAL FITTINGS AND GROUNDING PURPOSE.  
4. HRS MARK AND CAV NO. ARE INDICATED IN APPROX POSITION SHOWN.  
5. GATE POSITION IS INDICATED IN APPROX POSITION SHOWN.

A-A (50:1)

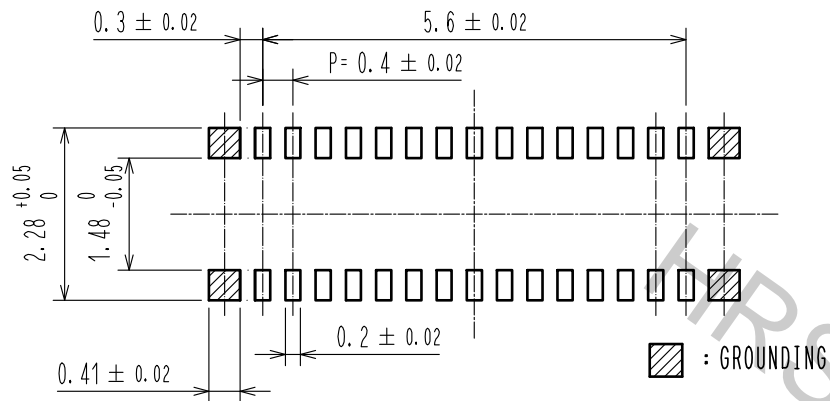


ENGAGEMENT FIGURE (50:1)

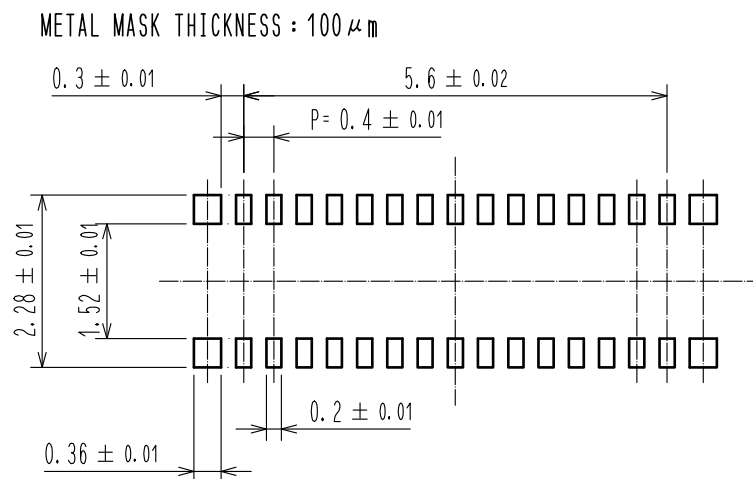


3	PS	CLEAR (ENBOSSED CARRIER TAPE)	6	PS	CLEAR (REINFORCEMENT COLLAR)
2	PHOSPHOR BRONZE	2	5	PS	BLACK (PLASTIC REEL)
1	LCP	UL94 V-0, BLACK	4	POLYESTER	CLEAR (COVER TAPE)
NO.	MATERIAL	FINISH , REMARKS	NO.	MATERIAL	FINISH , REMARKS
UNITS mm		SCALE 10 : 1	COUNT 	DESCRIPTION OF REVISIONS	DESIGNED
	HIROSE ELECTRIC CO., LTD.	APPROVED : MO. ISHIDA	17. 01. 19	DRAWING NO.	EDC-319841-53-00
		CHECKED : TS. MIYAZAKI	17. 01. 19	PART NO.	BM14B(0.8)-30DS-0.4V(53)
		DESIGNED : NY. YAMASHIRO	17. 01. 19	CODE NO.	CL684-8006-3-53
		DRAWN : SN. NUMAZAKI	17. 01. 18		1/3

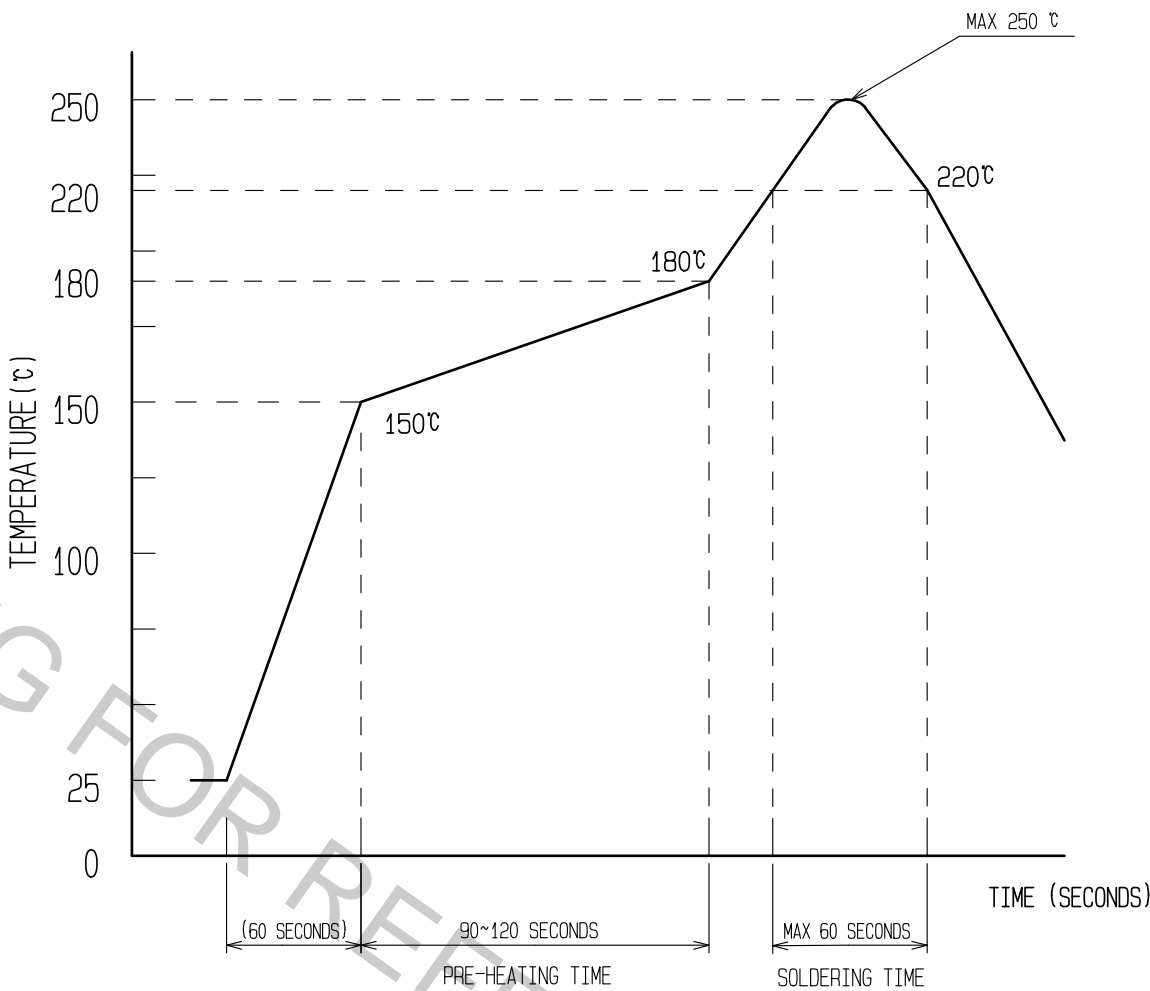
◆ RECOMMENDED PCB LAYOUT



◆ RECOMMENDED METAL MASK DIMENSIONS



6 RECOMMENDED REFLOW TEMPERATURE PROFILE  
USING LEAD-FREE SOLDER PASTE.



REFLOW METHOD: IR REFLOW.  
NUMBER OF REFLOW CYCLES: 2 CYCLES MAX.  
1) REFLOW TIME  
DURATION ABOVE 220°C, 60 SEC. MAX.  
(PEAK TEMPERATURE: 250°C MAX)  
2) PRE-HEAT TIME  
PRE-HEAT TEMPERATURE(MIN): 150°C  
PRE-HEAT TEMPERATURE(MAX): 180°C  
PRE-HEAT TIME: 90-120 sec.

6 THIS TEMPERATURE PROFILE IS PER THE CONDITIONS SHOWN ABOVE.  
ADDITIONAL FACTORS, SUCH AS SOLDER PASTE TYPE, PCB SIZE AND  
OTHER MOUNTED COMPONENTS COULD AFFECT THE PROFILE, THEREFORE,  
A THOROUGH EVALUATION OF MOUNTING CONDITION IS REQUIRED  
PRIOR TO PRODUCTION. TEMPERATURE IS MEASURED AT CONTACT LEAD.

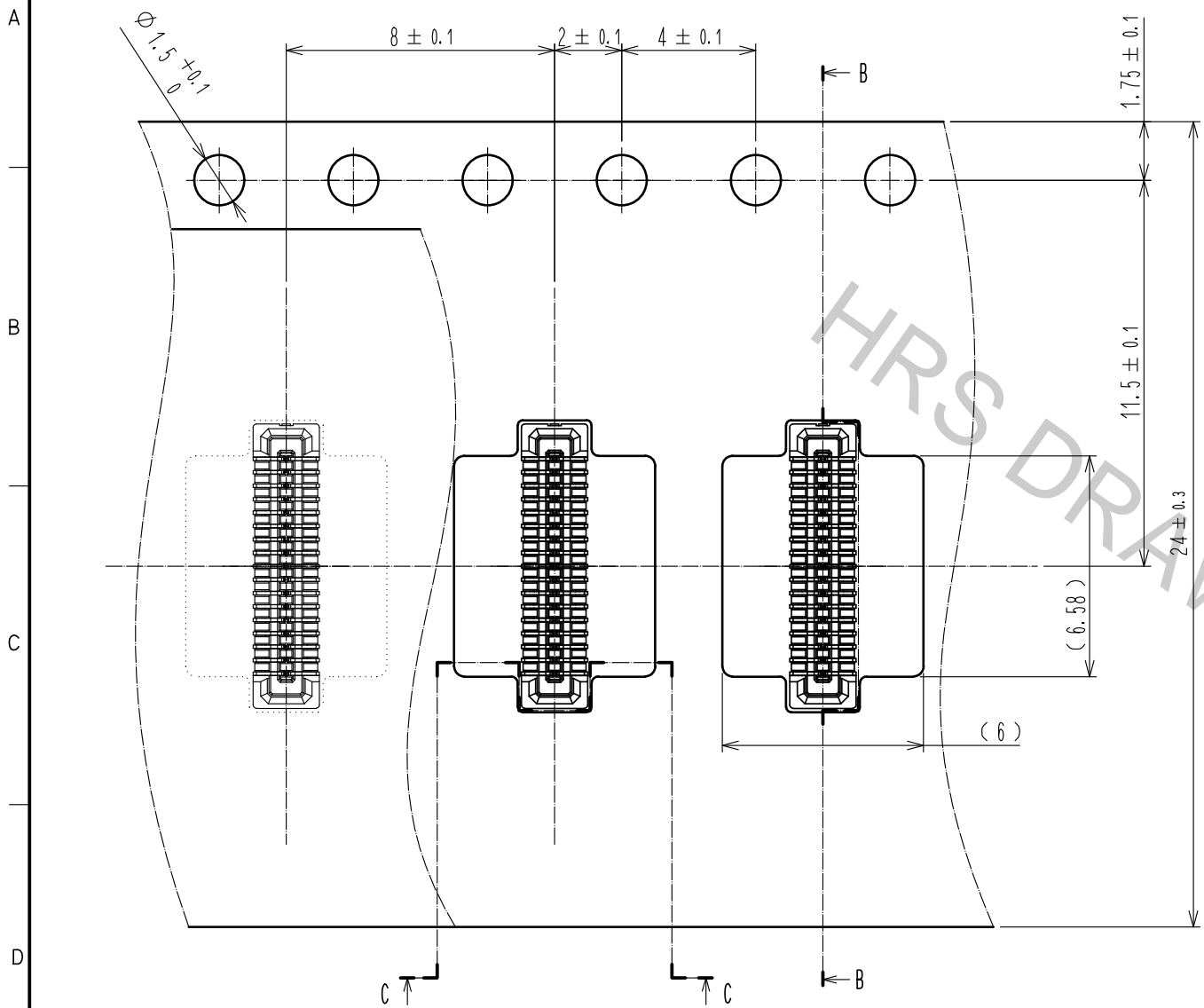
HRS

DRAWING NO.	EDC-319841-53-00
PART NO.	BM14B(0.8)-30DS-0.4V(53)
CODE NO.	CL684-8006-3-53

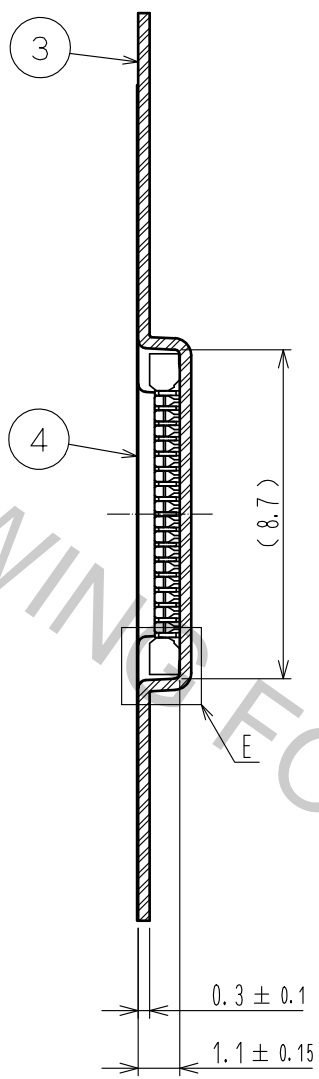
Oct.1.2018 Copyright 2018 HIROSE ELECTRIC CO., LTD. All Rights Reserved.  
In case that the application demands a high level of reliability, such as automotive,  
please contact a company representative for further information.

EMBOSSED CARRIER TAPE PACKAGING (5:1)

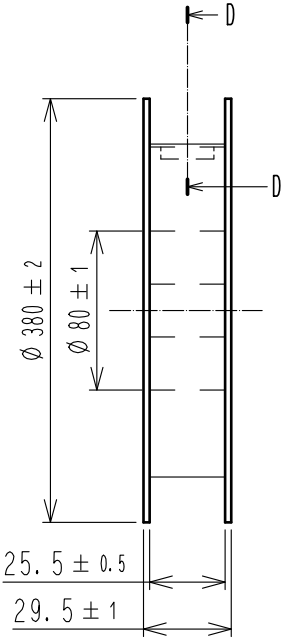
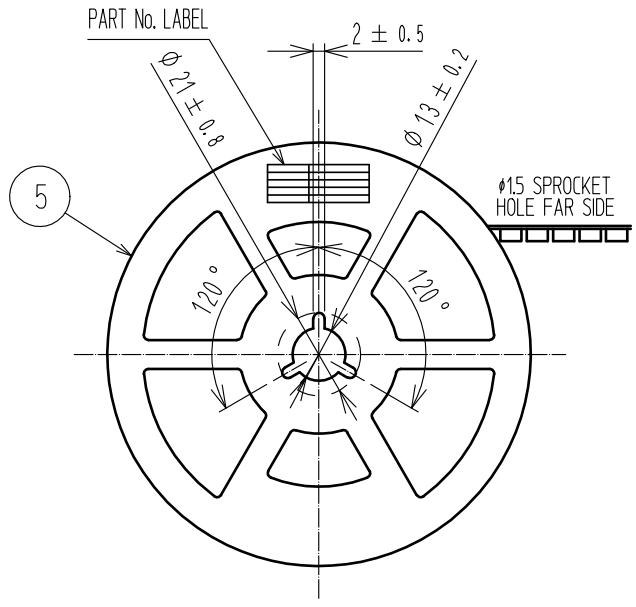
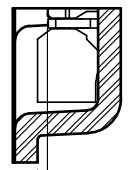
STYLE AND DIMENTION OF REEL (FREE)



B-B (5:1)



E(10:1)



D-D (FREE)

10 REINFORCEMENT COLLAR

TAPING

TAPE AND REEL POCKET

DETAIL OF PART No. LABEL

SUPPLIER	
QUANTITY	
PART No.	
CODE No.	
DATE OF MANUFACTURED	
製造年月日	** ** *
製品コード	CL684-8006-3-53
製品名	BM14B(0.8)-30DS-0.4V(53)
数量	1,000
納入者	ヒロセ電機(株)

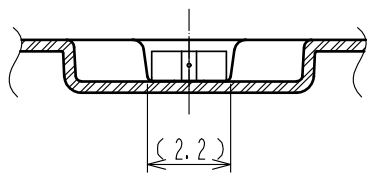
7. PER REEL 1000 CONNECTORS.

8. THE DIMENSIONS IN PARENTHESES ARE FOR REFERENCE.

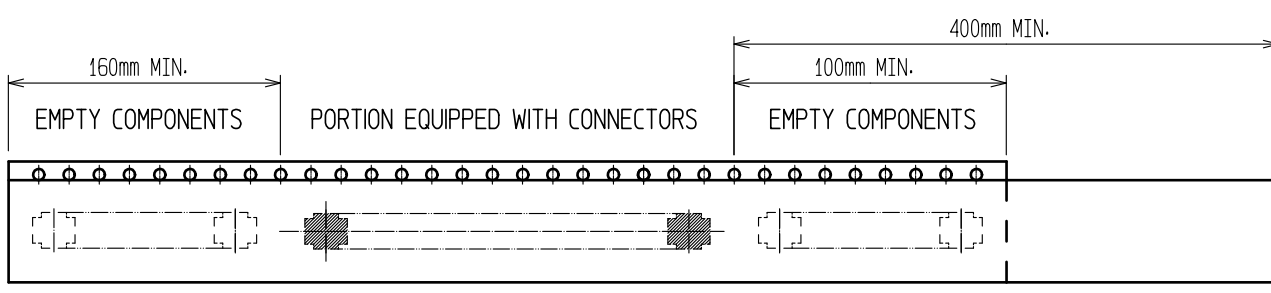
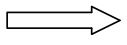
9 REFER TO JIS C 0806(PACKAGING OF COMPONENTS FOR AUTOMATIC HANDLING)

10 AFTER PACKAGING, ROLL 2 METERS OF THE REINFORCEMENT COLLAR TO OUTER CIRCUMFERENCE OF TAPE AND REEL POCKET, AND TAPE DOWN AT THE END THE COLLAR.

C-C (5:1)



DIRECTION OF UNREELING



DRAWING NO.	EDC-319841-53-00
PART NO.	BM14B(0.8)-30DS-0.4V(53)
CODE NO.	CL684-8006-3-53