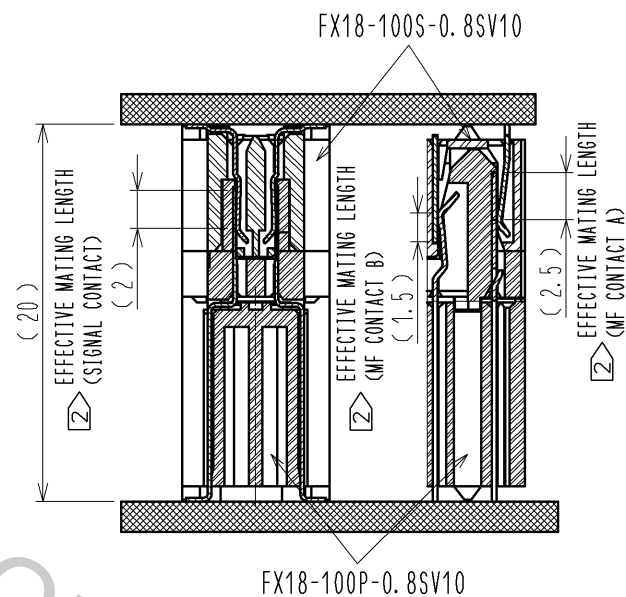
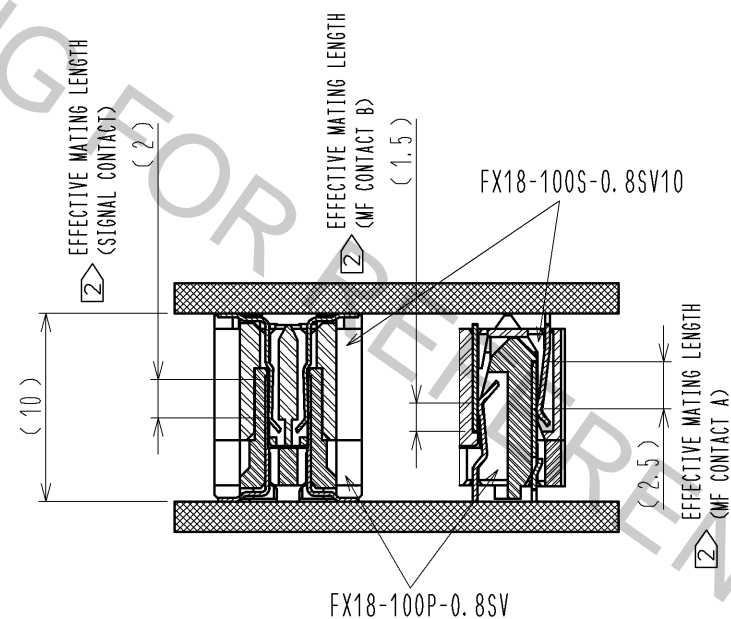


CROSS SECTION OF MATING(FREE)  
STACKING HEIGHT=10mm

CROSS SECTION OF MATING(FREE)  
STACKING HEIGHT=20mm



NOTE 1 LEAD CO-PLANARITY IS 0.1mm MAX.

2 CONTACTS ARE 3 STEPS SEQUENTIAL. (MF CONTACT A=>SIGNAL CONTACT=>MF CONTACT B)  
WHEN USING THIS SEQUENTIAL STRUCTURE, PLEASE AVOID ANGLED INSERTION.

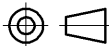



3 MF CONTACT A AND MF CONTACT B CAN BE USED AS POWER SUPPLY CONTACT. (3A/PIN MAX)

4 IT SHOWS THE VACUUM PICKUP AREA. (SEE PAGE 2)  
REMOVE THE MYLAR TAPE BEFORE MATING CONNECTORS.

5 THIS IS PACKAGED IN TRAY. (40pcs/TRAY)

6 BLEMISH AND HIT MARK CAN BE OCCURED THROUGH OUT THE MANUFACTURING PROCESS WHICH DOESN' T AFFECT QUALITY LEVEL.

7 THE DIMENSIONS IN PARENTHESES ARE FOR REFERENCES.

			6	POLYIMIDE				
			5	POLYSTYRENE				
			4	COPPER ALLOY	CONTACT AREA:GOLD 0.1 μm			
					LEAD AREA:TIN-PLATING 1 μm			
					UNDER PLATING:NICKEL 1.3 μm			
2	COPPER ALLOY	CONTACT AREA:GOLD 0.1 μm	3	COPPER ALLOY	CONTACT AREA:GOLD 0.1 μm			
		LEAD AREA:GOLD 0.03 μm			LEAD AREA:TIN-PLATING 1 μm			
		UNDER PLATING:NICKEL 1.3 μm			UNDER PLATING:NICKEL 1.3 μm			
1	POLYAMIDE	BLACK UL94V-0						
NO.	MATERIAL	FINISH , REMARKS	NO.	MATERIAL	FINISH , REMARKS			
UNITS mm		SCALE 2 : 1		COUNT	DESCRIPTION OF REVISIONS	DESIGNED	CHECKED	DATE
 HIROSE ELECTRIC CO., LTD.		APPROVED : HS. OKAWA		14. 07. 16	DRAWING NO. EDC3-349390-00			
		CHECKED : HT. YAMAGUCHI		14. 07. 15	PART NO. FX18-100S-0.8SV10			
		DESIGNED : TH. SANO		14. 07. 15	CODE NO. CL579-0058-0-00			
		DRAWN : TH. SANO		14. 07. 15				
					 1/2			

