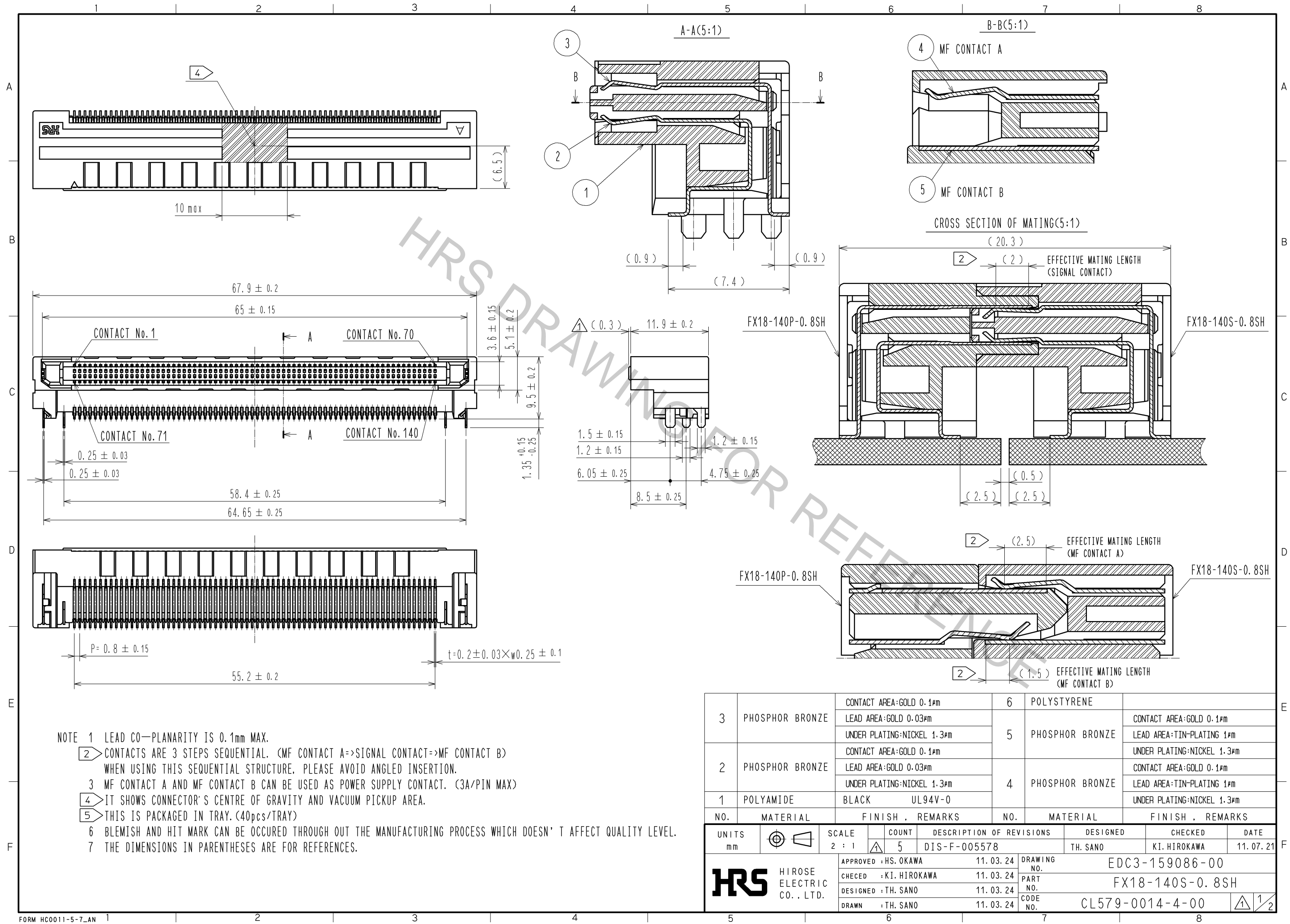


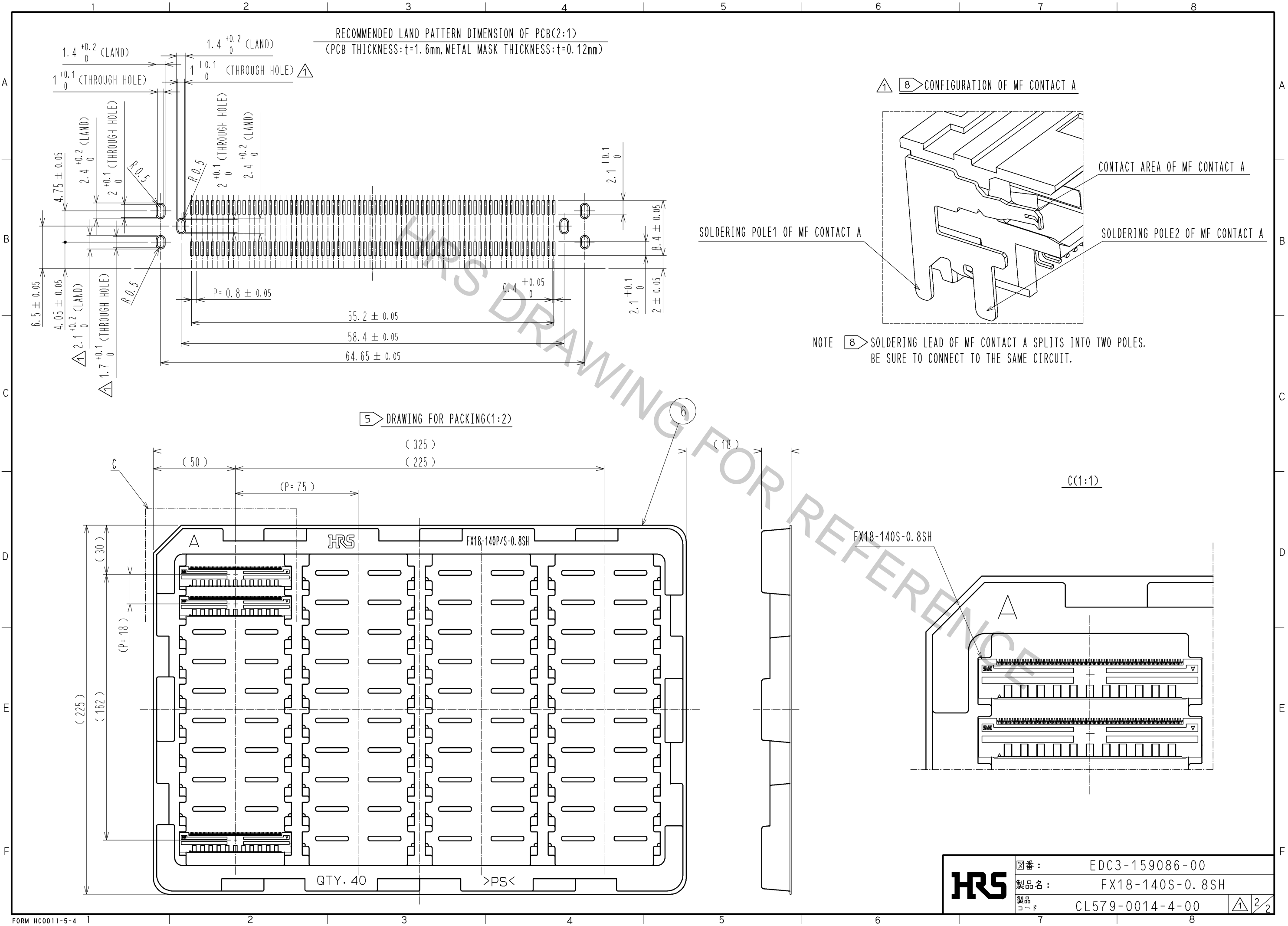
Oct.1.2018 Copyright 2018 HIROSE ELECTRIC CO., LTD. All Rights Reserved.  
In case that the application demands a high level of reliability, such as automotive,  
please contact a company representative for further information.



NOTE 1 LEAD CO-PLANARITY IS 0.1mm MAX.  
2 CONTACTS ARE 3 STEPS SEQUENTIAL. (MF CONTACT A=>SIGNAL CONTACT=>MF CONTACT B)  
WHEN USING THIS SEQUENTIAL STRUCTURE, PLEASE AVOID ANGLED INSERTION.  
3 MF CONTACT A AND MF CONTACT B CAN BE USED AS POWER SUPPLY CONTACT. (3A/PIN MAX)  
4 IT SHOWS CONNECTOR'S CENTRE OF GRAVITY AND VACUUM PICKUP AREA.  
5 THIS IS PACKAGED IN TRAY. (40pcs/TRAY)  
6 BLEMISH AND HIT MARK CAN BE OCCURED THROUGH OUT THE MANUFACTURING PROCESS WHICH DOESN' T AFFECT QUALITY LEVEL.  
7 THE DIMENSIONS IN PARENTHESES ARE FOR REFERENCES.

3	PHOSPHOR BRONZE	CONTACT AREA:GOLD 0.1µm	6	POLYSTYRENE	
		LEAD AREA:GOLD 0.03µm	5	PHOSPHOR BRONZE	CONTACT AREA:GOLD 0.1µm
		UNDER PLATING:NICKEL 1.3µm			LEAD AREA:TIN-PLATING 1µm
2	PHOSPHOR BRONZE	CONTACT AREA:GOLD 0.1µm	4	PHOSPHOR BRONZE	CONTACT AREA:GOLD 0.1µm
		LEAD AREA:GOLD 0.03µm			LEAD AREA:TIN-PLATING 1µm
		UNDER PLATING:NICKEL 1.3µm			UNDER PLATING:NICKEL 1.3µm
1	POLYAMIDE	BLACK UL94V-0			
NO.	MATERIAL	FINISH , REMARKS	NO.	MATERIAL	FINISH , REMARKS
UNITS mm		SCALE 2 : 1	COUNT 5	DESCRIPTION OF REVISIONS DIS-F-005578	DESIGNED TH. SANO
		APPROVED : HS. OKAWA	11.03.24	DRAWING NO.	EDC3-159086-00
		CHECED : KI. HIROKAWA	11.03.24	PART NO.	FX18-140S-0.8SH
		DESIGNED : TH. SANO	11.03.24	CODE NO.	CL579-0014-4-00
		DRAWN : TH. SANO	11.03.24		
		DATE	11.07.21		

Oct.1.2018 Copyright 2018 HIROSE ELECTRIC CO., LTD. All Rights Reserved.  
In case that the application demands a high level of reliability, such as automotive,  
please contact a company representative for further information.



図番:	EDC3-159086-00
製品名:	FX18-140S-0.8SH
製品コード	CL579-0014-4-00