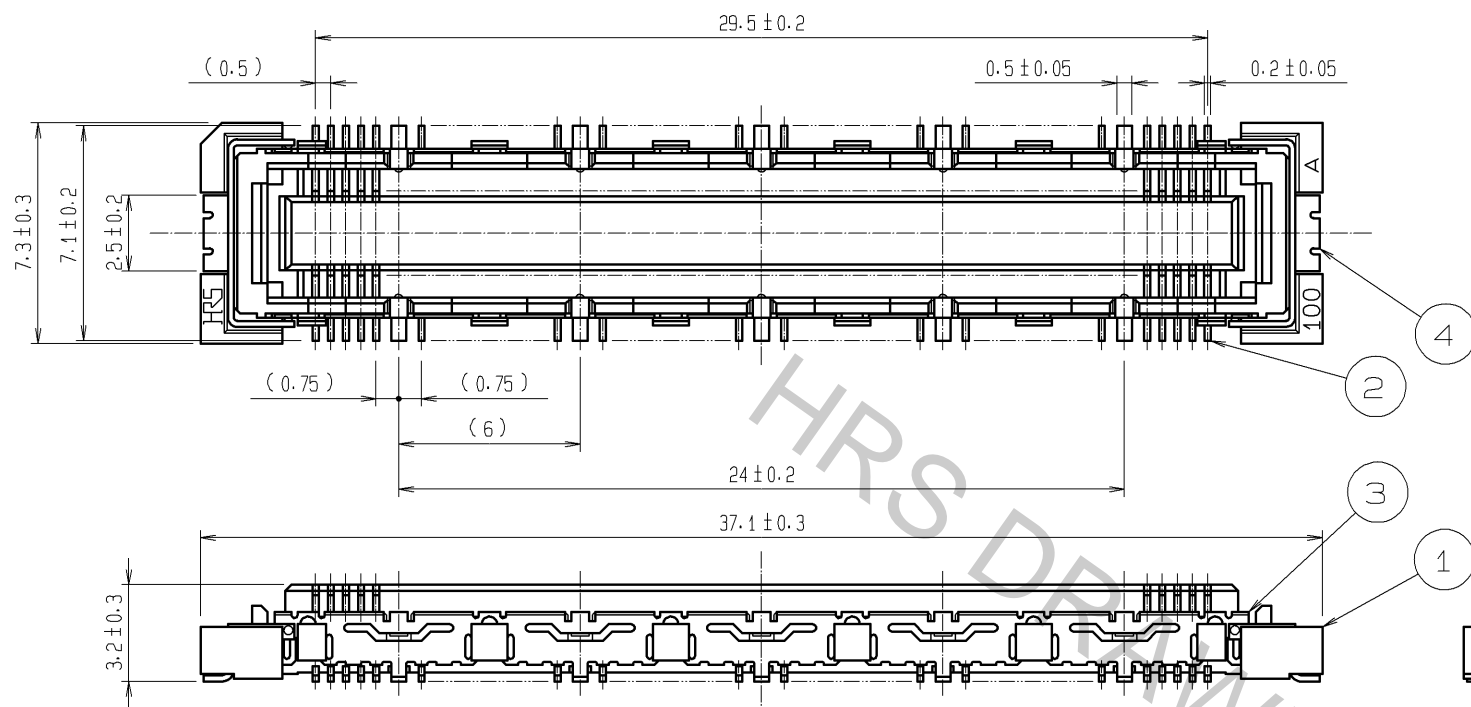
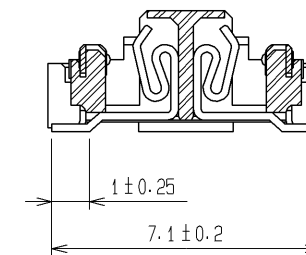


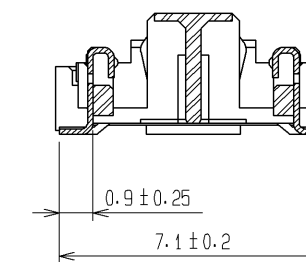
Oct.1.2018 Copyright 2018 HIROSE ELECTRIC CO., LTD. All Rights Reserved.
In case that the application demands a high level of reliability, such as automotive,
please contact a company representative for further information.



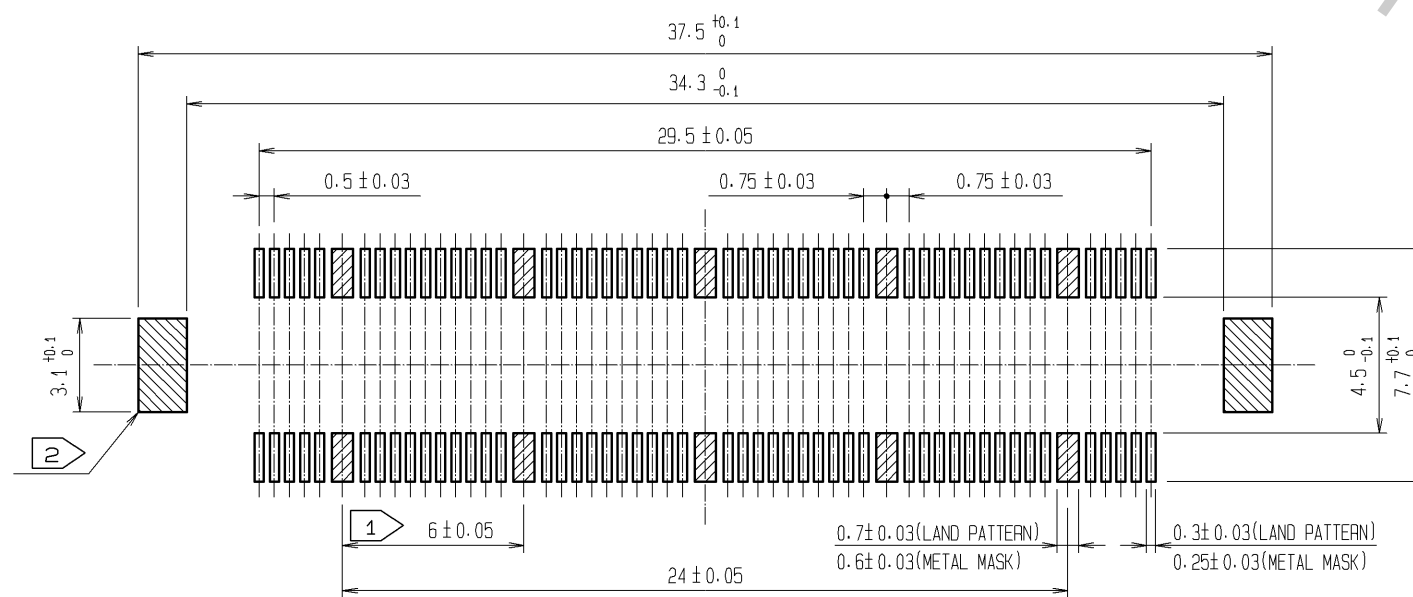
CROSS CUT SECTION - SIGNAL(5:1)



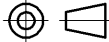



CROSS CUT SECTION - GROUND(5:1)



RECOMMENDED LAND PATTERN DIMENSION OF PCB
(RECOMMENDED METAL MASK THICKNESS:0.15mm)



- NOTES
- 1 10 HATCHED PARTS:GROUND CIRCUIT.
 - 2 2 HATCHED PARTS:GROUND CIRCUIT.
 - 3 SMT LEAD-COPLANARITY:0.1 MAX.
 - 4 THIS PRODUCT HAS NO POLARITY TO PATTERN FOR MOUNTING.
 - 5 THE DIMENSIONS IN PARENTHESES ARE FOR REFERENCE.

					3, 4		PHOSPHOR BRONZE	TIN-PLATING	
					2		PHOSPHOR BRONZE	CONTACT AREA : GOLD 0.1μm min.	
								LEAD AREA : GOLD FLASH	
								UNDER PLATING : NICKEL 1μm min.	
1		LCP		BEIGE		UL94V-0			
NO.		MATERIAL		FINISH.		REMARKS			
UNITS				SCALE		COUNT		DESCRIPTION OF REVISIONS	
mm				4 : 1					
 HIROSE ELECTRIC CO., LTD.				APPROVED : HS. OKAWA		08. 06. 26		DRAWING NO.	
				CHECED : HT. YAMAGUCHI		08. 06. 25		PART NO.	
				DESIGNED : SY. KAMIGA		08. 06. 23		FX10B-100S/10-SV<71>	
				DRAWN : HK. SUNADORI		08. 06. 18		CODE NO.	
								 1/1	

HRS HIROSE ELECTRIC CO., LTD.

APPROVED : HS. OKAWA 08.06.26
CHECKED : HT. YAMAGUCHI 08.06.25
DESIGNED : SY. KAMIGA 08.06.23
DRAWN : HK. SUNADORI 08.06.18

DRAWING NO. EDC3-151981-25
PART NO. FX10B-100S/10-SV<71>
CODE NO. CL570-0222-4-71