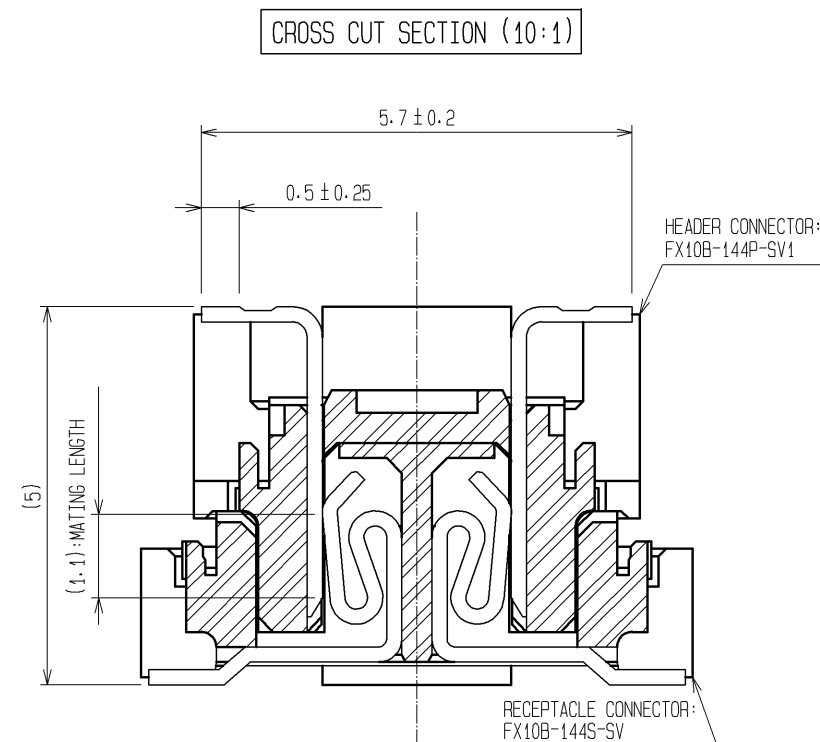
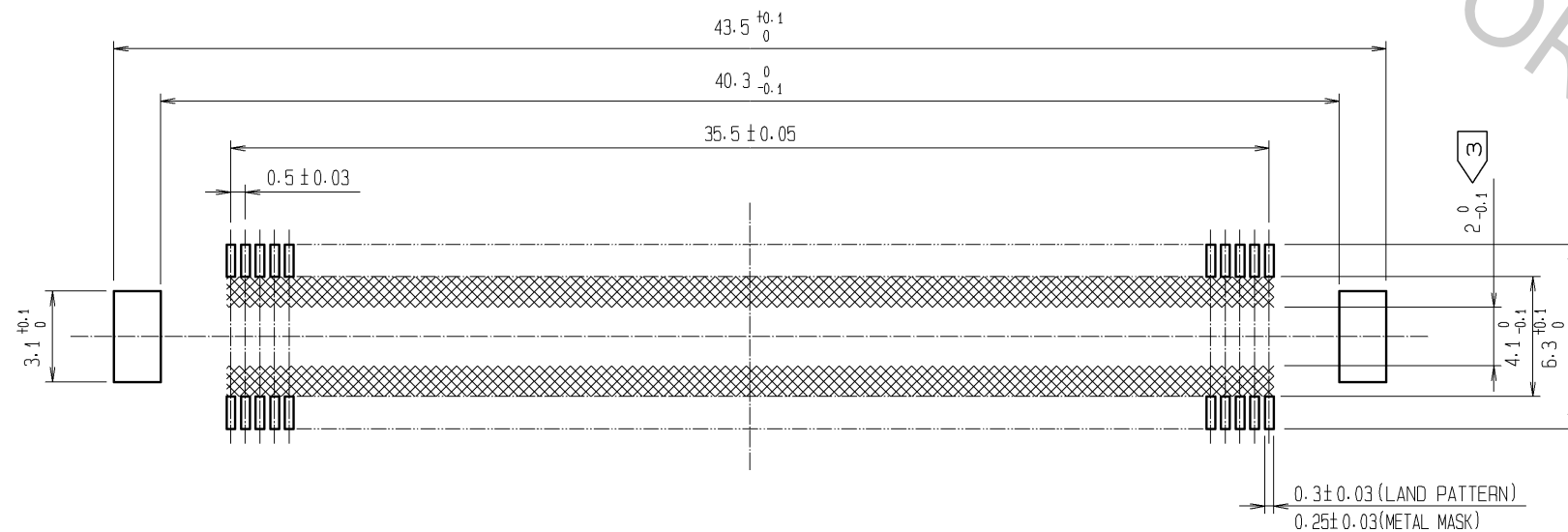
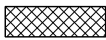
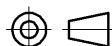




RECOMMENDED LAND PATTERN DIMENSION OF PCB
(RECOMMENDED METAL MASK THICKNESS: 0.15mm)



- NOTES
- 1 SMT LEAD-COPLANARITY: 0.1 MAX.
 - 2 THIS PRODUCT HAS NO POLARITY TO PATTERN FOR MOUNTING.
 - 3 MAKE SURE WIDTH OF PATTERN IS WITHIN THAT OF LAND, OR LEAD MAY TOUCH PATTERN. (THIS APPLIES TO HATCHED  AREA.)
 - 4 THE DIMENSIONS IN PARENTHESES ARE FOR REFERENCE.

				3		PHOSPHOR BRONZE	TIN-PLATING			
				2		PHOSPHOR BRONZE	CONTACT AREA:GOLD 0.1#m min.			
							LEAD AREA:TIN-PLATING 1#m min.			
							UNDER PLATING:NICKEL 1#m min.			
1	LCP		BEIGE			UL94V-0				
NO.	MATERIAL		FINISH .			REMARKS				
UNITS			SCALE		COUNT	DESCRIPTION OF REVISIONS		DESIGNED	CHECKED	DATE
mm	4 : 1									
 HIROSE ELECTRIC CO., LTD.		APPROVED :HS. OKAWA		09.04.14		DRAWING NO.		EDC3-151974-25		
		CHECED :HT. YAMAGUCHI		09.04.14		PART NO.		FX10B-144P-SV1(71)		
		DESIGNED :SY. KAMIGA		09.04.14		CODE NO.		CL570-0153-3-71		
		DRAWN :HK. SUNADORI		09.04.13						