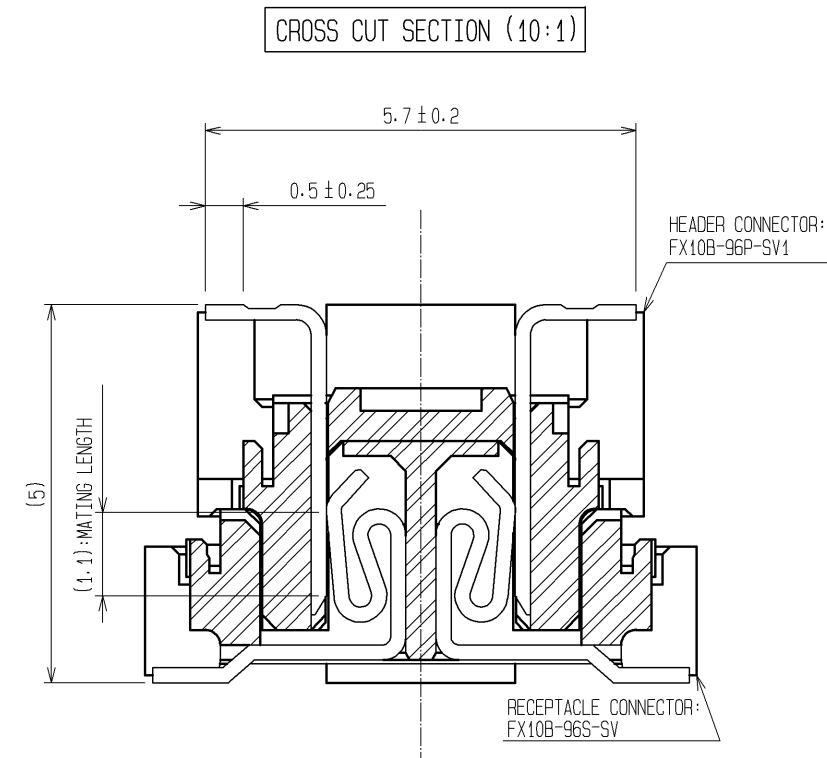
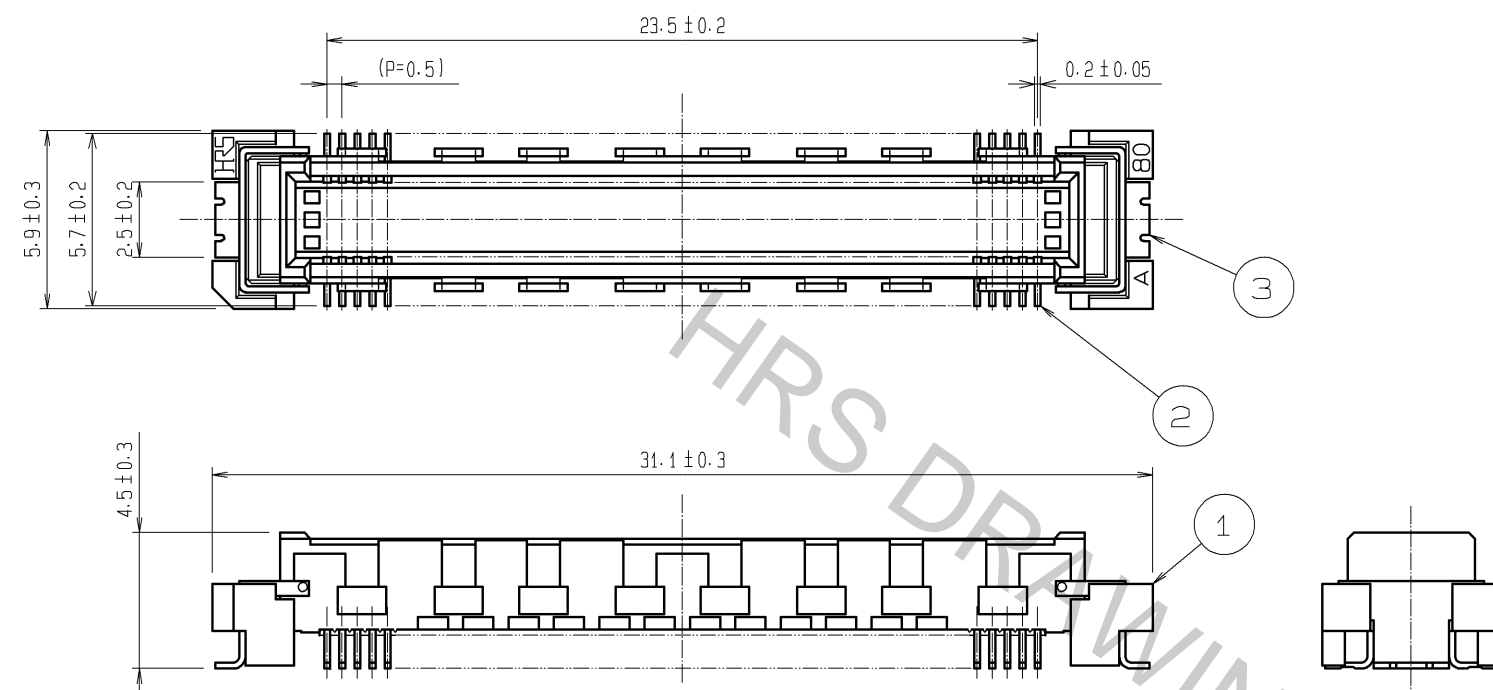
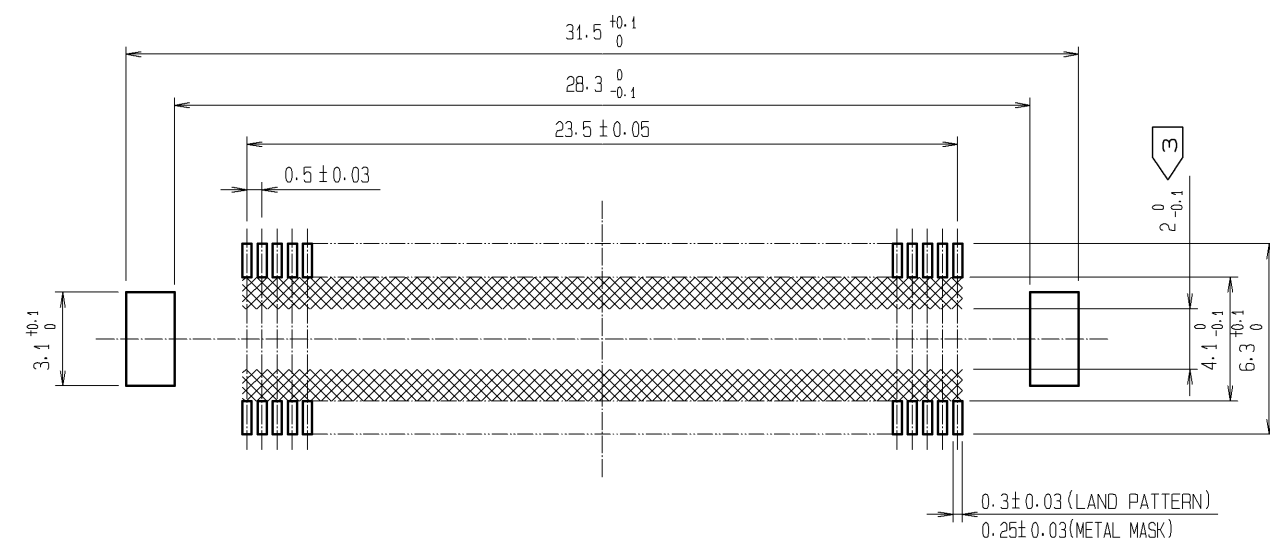


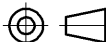



Oct.1.2018 Copyright 2018 HIROSE ELECTRIC CO., LTD. All Rights Reserved.
In case that the application demands a high level of reliability, such as automotive,
please contact a company representative for further information.



RECOMMENDED LAND PATTERN DIMENSION OF PCB
(RECOMMENDED METAL MASK THICKNESS: 0.15mm)



- NOTES
- 1 SMT LEAD-COPLANARITY: 0.1 MAX.
 - 2 THIS PRODUCT HAS NO POLARITY TO PATTERN FOR MOUNTING.
 - 3 MAKE SURE WIDTH OF PATTERN IS WITHIN THAT OF LAND, OR LEAD MAY TOUCH PATTERN. (THIS APPLIES TO HATCHED AREA.)
 - 4 THE DIMENSIONS IN PARENTHESES ARE FOR REFERENCE.

				3	PHOSPHOR BRONZE	TIN-PLATING		
				2	PHOSPHOR BRONZE	CONTACT AREA:GOLD 0.1#m min.		
						LEAD AREA:TIN-PLATING 1#m min.		
1	LCP	BEIGE		UL94V-0				
NO.	MATERIAL	FINISH . REMARKS		NO.	MATERIAL	FINISH . REMARKS		
UNITS mm		SCALE 4 : 1		COUNT	DESCRIPTION OF REVISIONS	DESIGNED	CHECKED	DATE
 HIROSE ELECTRIC CO., LTD.		APPROVED : HS. OKAWA		09.04.14	DRAWING NO. EDC3-151972-25			
		CHECED : HT. YAMAGUCHI		09.04.14	PART NO. FX10B-96P-SV1(71)			
		DESIGNED : SY. KAMIGA		09.04.14	CODE NO. CL570-0151-8-71			
		DRAWN : HK. SUNADORI		09.04.13	 1			