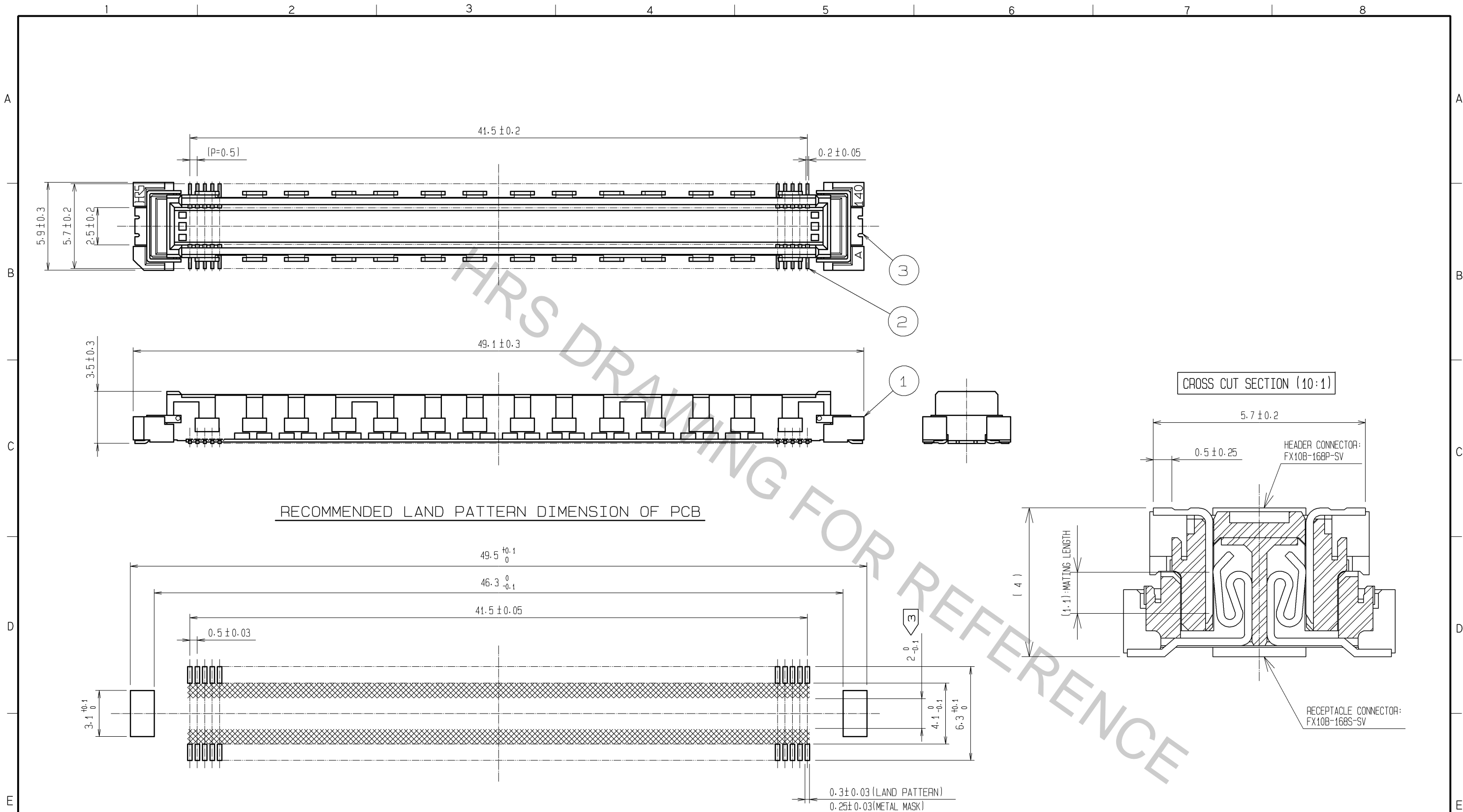
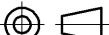





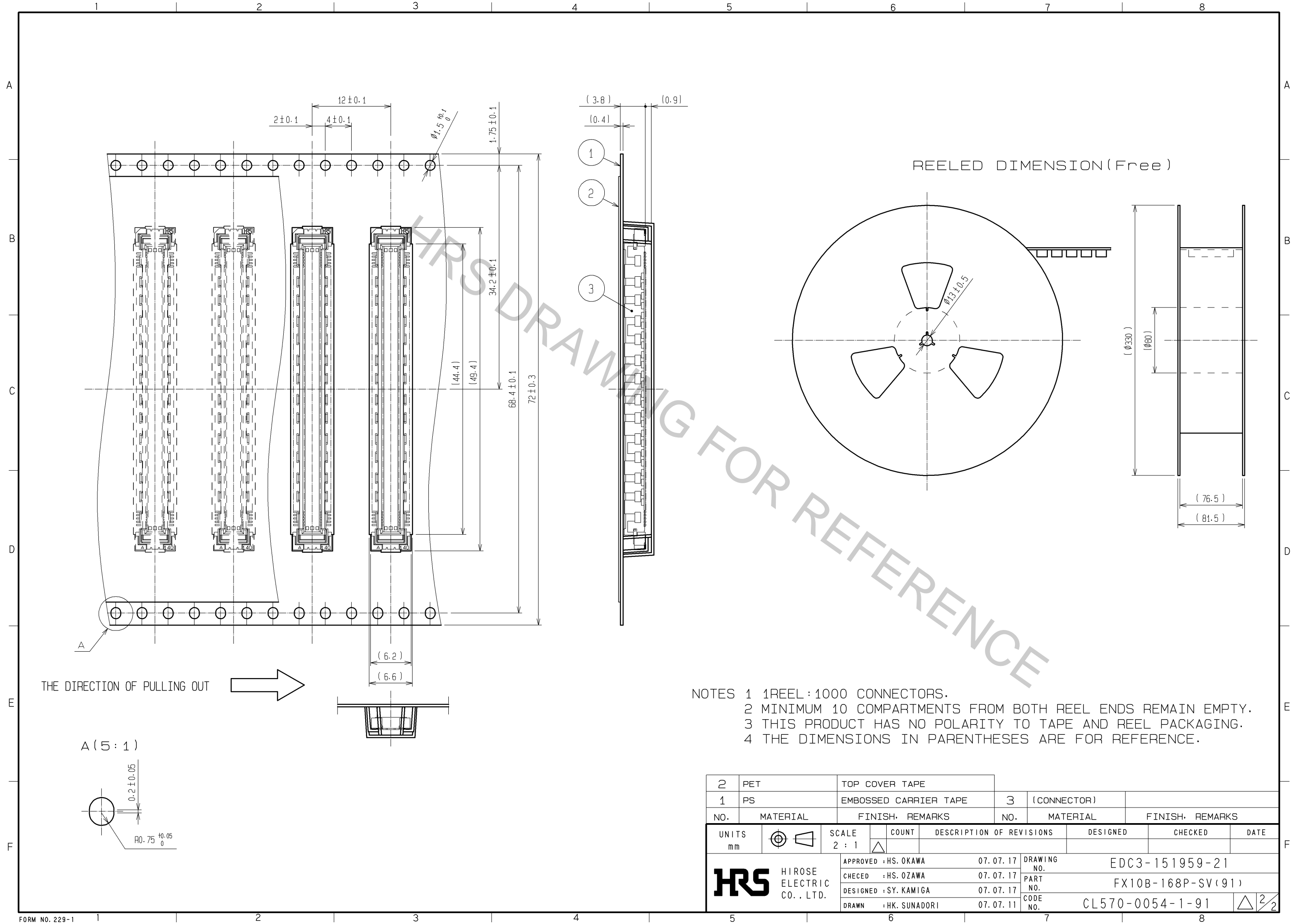
Oct.1.2018 Copyright 2018 HIROSE ELECTRIC CO., LTD. All Rights Reserved.
In case that the application demands a high level of reliability, such as automotive,
please contact a company representative for further information.



- NOTES
- SMT LEAD-COPLANARITY: 0.1 MAX.
 - THIS PRODUCT HAS NO POLARITY TO PATTERN FOR MOUNTING.
 - MAKE SURE WIDTH OF PATTERN IS WITHIN THAT OF LAND, OR LEAD MAY TOUCH PATTERN. (THIS APPLIES TO HATCHED AREA.)
 - EMBOSS CARRIER TAPE PACKAGE IS APPLIED ON THIS PRODUCT. PLEASE REFER TO THE SHEET 2/2 FOR THE DETAILS.
 - THE DIMENSIONS IN PARENTHESES ARE FOR REFERENCE.

				3	PHOSPHOR BRONZE	TIN-PLATING		
2	PHOSPHOR BRONZE	CONTACT AREA:GOLD 0.1μm min.						
		LEAD AREA:TIN-PLATING 1μm min.						
UNDER PLATING:NICKEL 1μm min.								
1	LCP	BEIGE	UL94V-0					
NO.	MATERIAL	FINISH	REMARKS	NO.	MATERIAL	FINISH	REMARKS	
UNITS		SCALE		COUNT	DESCRIPTION OF REVISIONS	DESIGNED	CHECKED	DATE
mm		4 : 1						
 HIROSE ELECTRIC CO., LTD.		APPROVED	:HS. OKAWA	07. 07. 17	DRAWING NO.	EDC3-151959-21		
		CHECKED	:HS. OZAWA	07. 07. 17	PART NO.			
		DESIGNED	:SY. KAMIGA	07. 07. 17	CODE NO.	FX10B-168P-SV(91)		
		DRAWN	:HK. SUNADORI	07. 07. 11				CL570-0054-1-91
							1	2

Oct.1.2018 Copyright 2018 HIROSE ELECTRIC CO., LTD. All Rights Reserved.
In case that the application demands a high level of reliability, such as automotive,
please contact a company representative for further information.



NOTES 1 1 REEL : 1000 CONNECTORS.
2 MINIMUM 10 COMPARTMENTS FROM BOTH REEL ENDS REMAIN EMPTY.
3 THIS PRODUCT HAS NO POLARITY TO TAPE AND REEL PACKAGING.
4 THE DIMENSIONS IN PARENTHESES ARE FOR REFERENCE.

2	PET	TOP COVER TAPE			
1	PS	EMBOSSED CARRIER TAPE	3	(CONNECTOR)	
NO.	MATERIAL	FINISH, REMARKS	NO.	MATERIAL	FINISH, REMARKS
UNITS mm		SCALE 2 : 1	COUNT 	DESCRIPTION OF REVISIONS	DESIGNED CHECKED DATE
HIROSE ELECTRIC CO., LTD.		APPROVED : HS. OKAWA	07. 07. 17	DRAWING NO.	EDC3-151959-21
		CHECED : HS. OZAWA	07. 07. 17	PART NO.	FX10B-168P-SV(91)
		DESIGNED : SY. KAMIGA	07. 07. 17	CODE NO.	CL570-0054-1-91
		DRAWN : HK. SUNADORI	07. 07. 11		