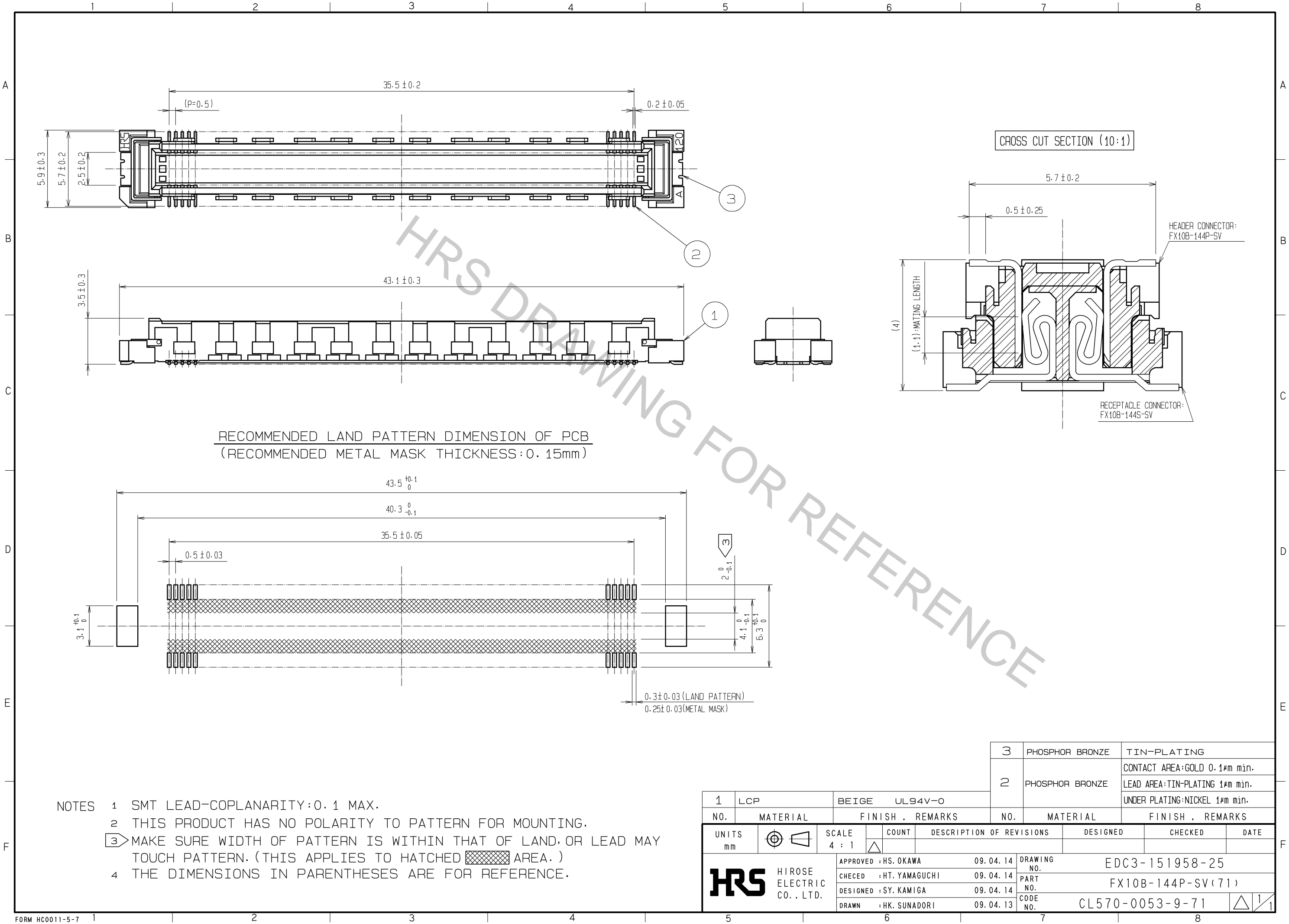
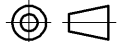





Oct.1.2018 Copyright 2018 HIROSE ELECTRIC CO., LTD. All Rights Reserved.
In case that the application demands a high level of reliability, such as automotive,
please contact a company representative for further information.



RECOMMENDED LAND PATTERN DIMENSION OF PCB
(RECOMMENDED METAL MASK THICKNESS: 0.15mm)

- NOTES
- 1 SMT LEAD-COPLANARITY: 0.1 MAX.
 - 2 THIS PRODUCT HAS NO POLARITY TO PATTERN FOR MOUNTING.
 - 3 MAKE SURE WIDTH OF PATTERN IS WITHIN THAT OF LAND, OR LEAD MAY TOUCH PATTERN. (THIS APPLIES TO HATCHED AREA.)
 - 4 THE DIMENSIONS IN PARENTHESES ARE FOR REFERENCE.

				3		PHOSPHOR BRONZE		TIN-PLATING											
				2		PHOSPHOR BRONZE		CONTACT AREA:GOLD 0.1μm min.											
								LEAD AREA:TIN-PLATING 1μm min.											
1		LCP		BEIGE				UL94V-0		UNDER PLATING:NICKEL 1μm min.									
NO.		MATERIAL		FINISH .		REMARKS		NO.		MATERIAL		FINISH .		REMARKS					
UNITS mm				SCALE 4 : 1				COUNT		DESCRIPTION OF REVISIONS				DESIGNED		CHECKED		DATE	
 HIROSE ELECTRIC CO. , LTD.				APPROVED : HS. OKAWA		09. 04. 14		DRAWING NO. EDC3-151958-25											
				CHECED : HT. YAMAGUCHI		09. 04. 14		PART NO. FX10B-144P-SV (71)											
				DESIGNED : SY. KAMIGA		09. 04. 14		CODE NO.											
				DRAWN : HK. SUNADORI		09. 04. 13		CL570-0053-9-71											
								 1/1											