



NOTES

- 1 SMT LEAD-COPLANARITY:0.1 MAX.
- 2 THIS PRODUCT HAS NO POLARITY TO PATTERN FOR MOUNTING.
- 3 MAKE SURE WIDTH OF PATTERN IS WITHIN THAT OF LAND, OR LEAD MAY TOUCH PATTERN. (THIS APPLIES TO HATCHED  AREA.)
- 4 THE DIMENSIONS IN PARENTHESES ARE FOR REFERENCE.

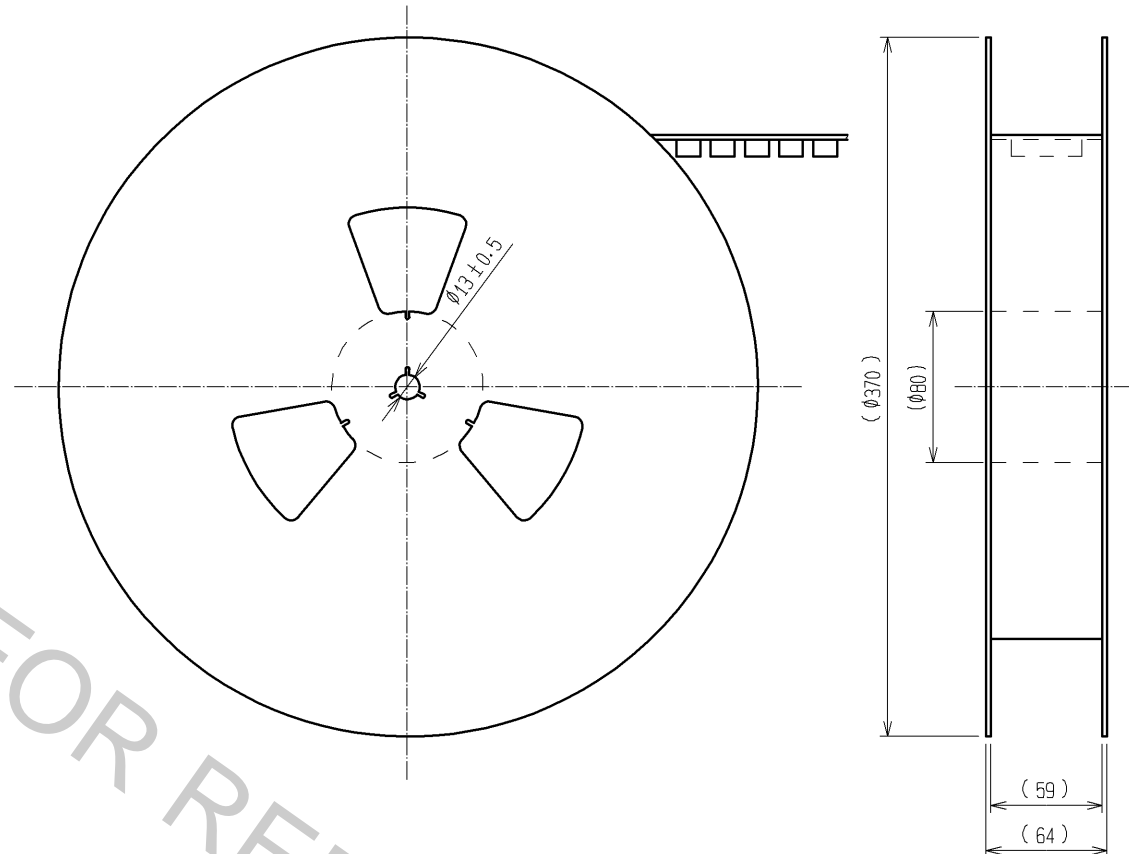
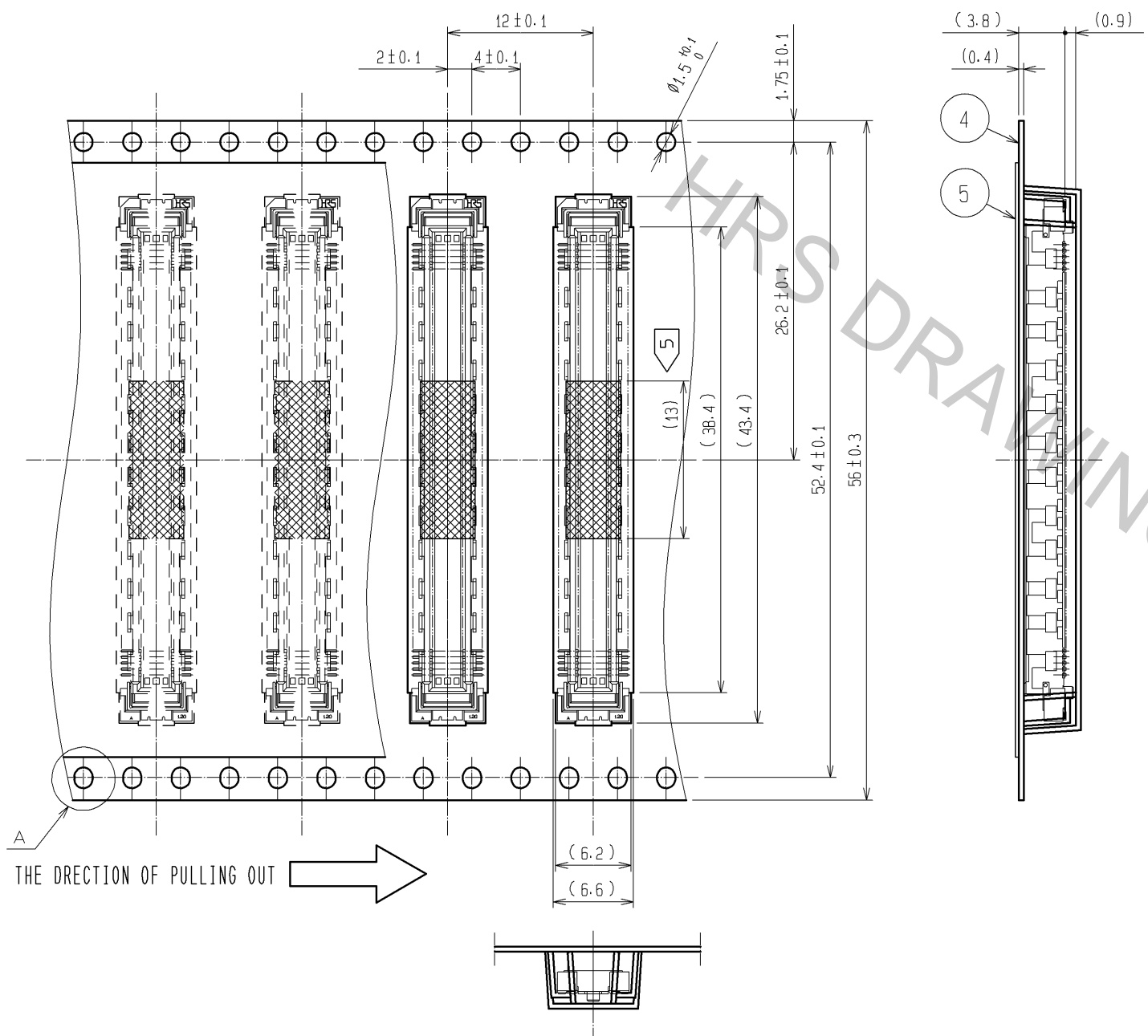
2	PHOSPHOR BRONZE	CONTACT AREA:GOLD 0.1μm min.	6	POLYIMIDE			
		LEAD AREA:TIN-PLATING 1μm min.	5	PET	TOP COVER TAPE		
		UNDER PLATING:NICKEL 1μm min.	4	PS	EMBOSSSED CARRIER TAPE		
1	LCP	BEIGE UL94V-0	3	PHOSPHOR BRONZE	TIN-PLATING		
NO.	MATERIAL	FINISH . REMARKS		NO.	MATERIAL	FINISH . REMARKS	

UNITS mm		SCALE 4 : 1		COUNT	DESCRIPTION OF REVISIONS		DESIGNED	CHECKED	DATE
 HIROSE ELECTRIC CO., LTD.		APPROVED : HS. OKAWA	13. 12. 10	DRAWING NO.	EDC3-151954-22				
		CHECED : HT. YAMAGUCHI	13. 12. 10	PART NO.	FX10A-144P-SV(92)				
		DESIGNED : KJ. NISHIWAKI	13. 12. 10	CODE NO.	CL570-0043-5-92			1/2	
		DRAWN : KJ. NISHIWAKI	13. 12. 10						

Oct.1.2018 Copyright 2018 HIROSE ELECTRIC CO., LTD. All Rights Reserved.
In case that the application demands a high level of reliability, such as automotive,
please contact a company representative for further information.

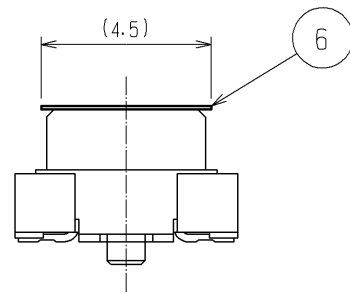
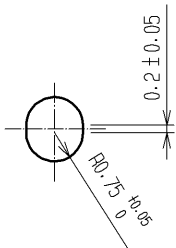
DRAWING FOR PACKING(2:1)

REELED DIMENSION(Free)



A(5:1)

MYLAR TAPE DIMENSION(5:1)



- NOTES
- 1 REEL : 1000 CONNECTORS.
 - 2 MINMUM 10 COMPARTMENTS FROM BOTH REEL ENDS REMAIN EMPTY.
 - 3 THIS PRODUCT HAS NO POLAVITY TO TAPE AND REEL PACKING.
 - 4 THE DIMENSIONS IN PARENTHESES ARE FOR REFERENCE.
 - 5 IT SHOWS THE VACUUM PICKUP AREA.
REMOVE THE MYLAR TAPE BEFORE MATING CONNECTORS.

HRS	DRAWING NO.	EDC3-151954-22
	PART NO.	FX10A-144P-SV(92)
	CODE NO.	CL570-0043-5-92