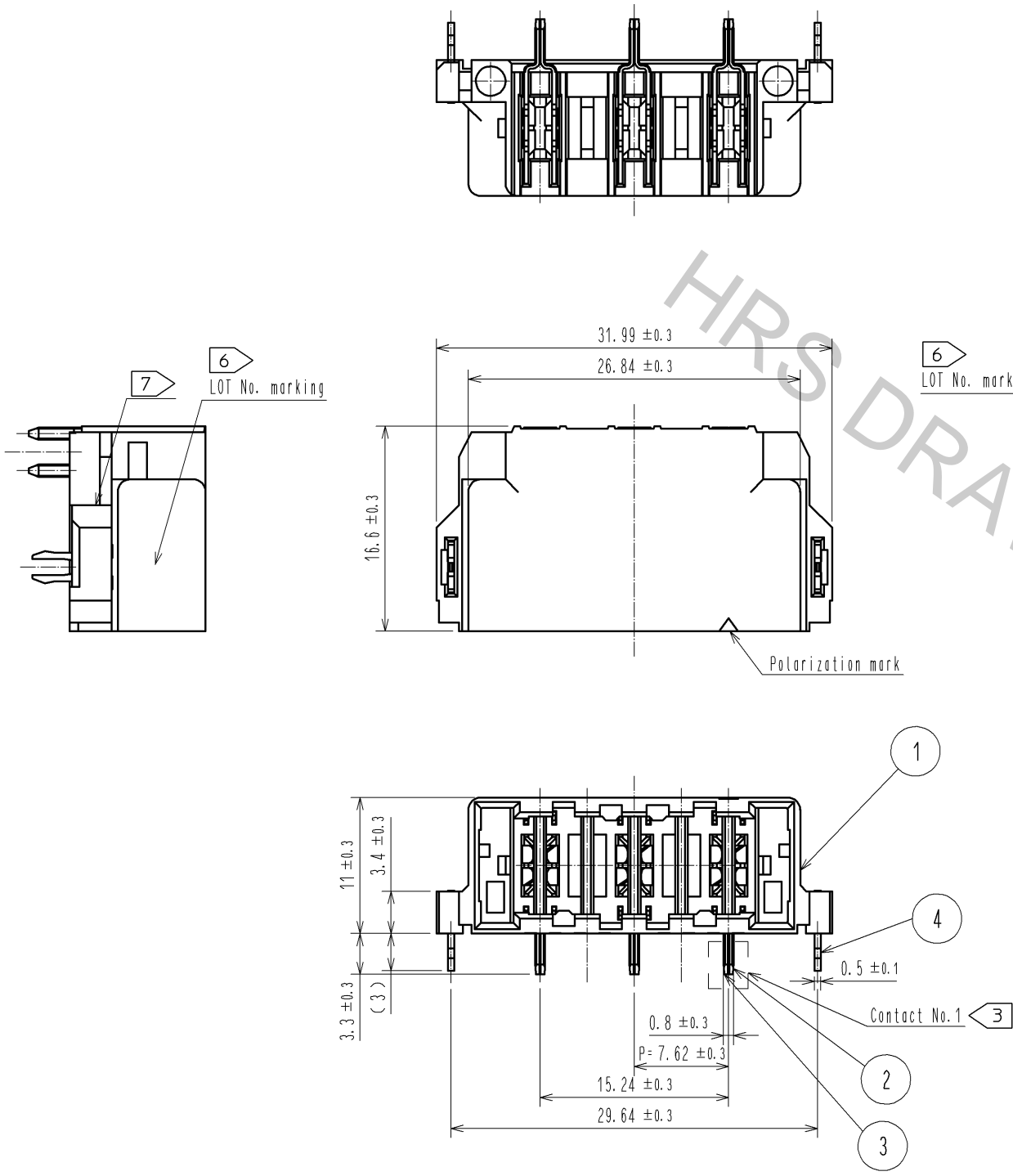
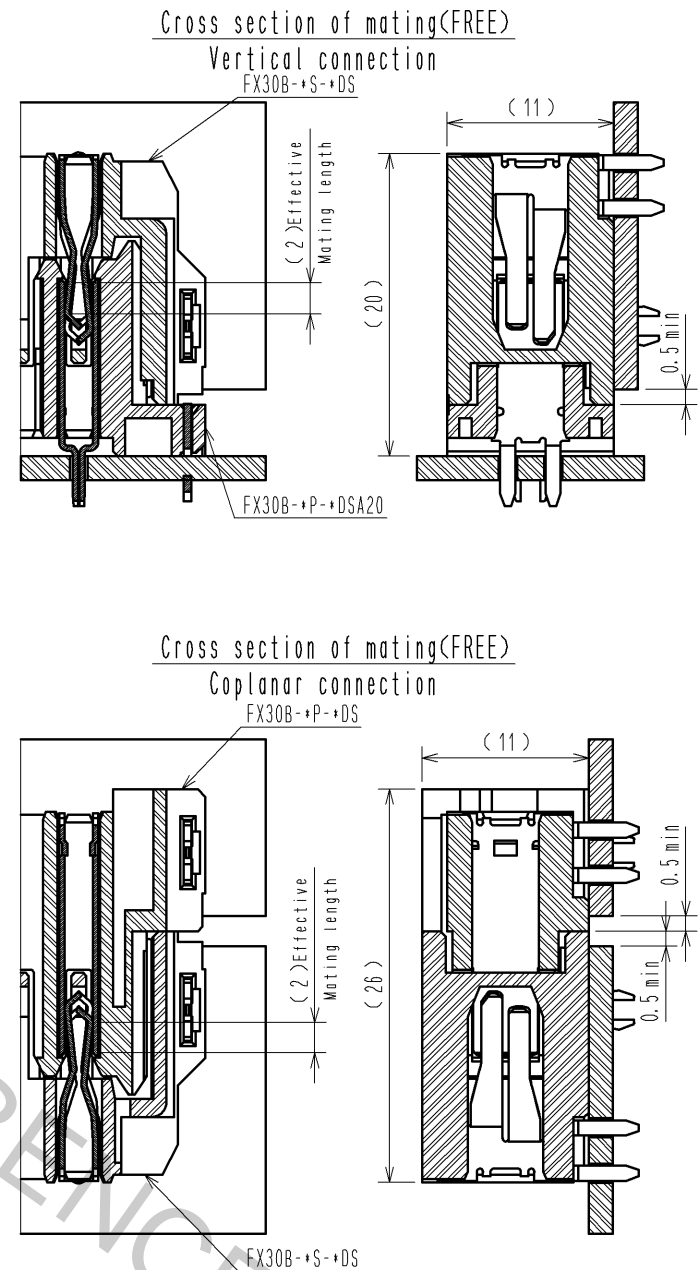
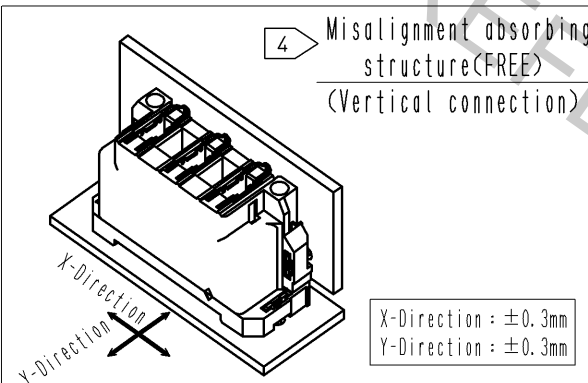
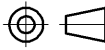





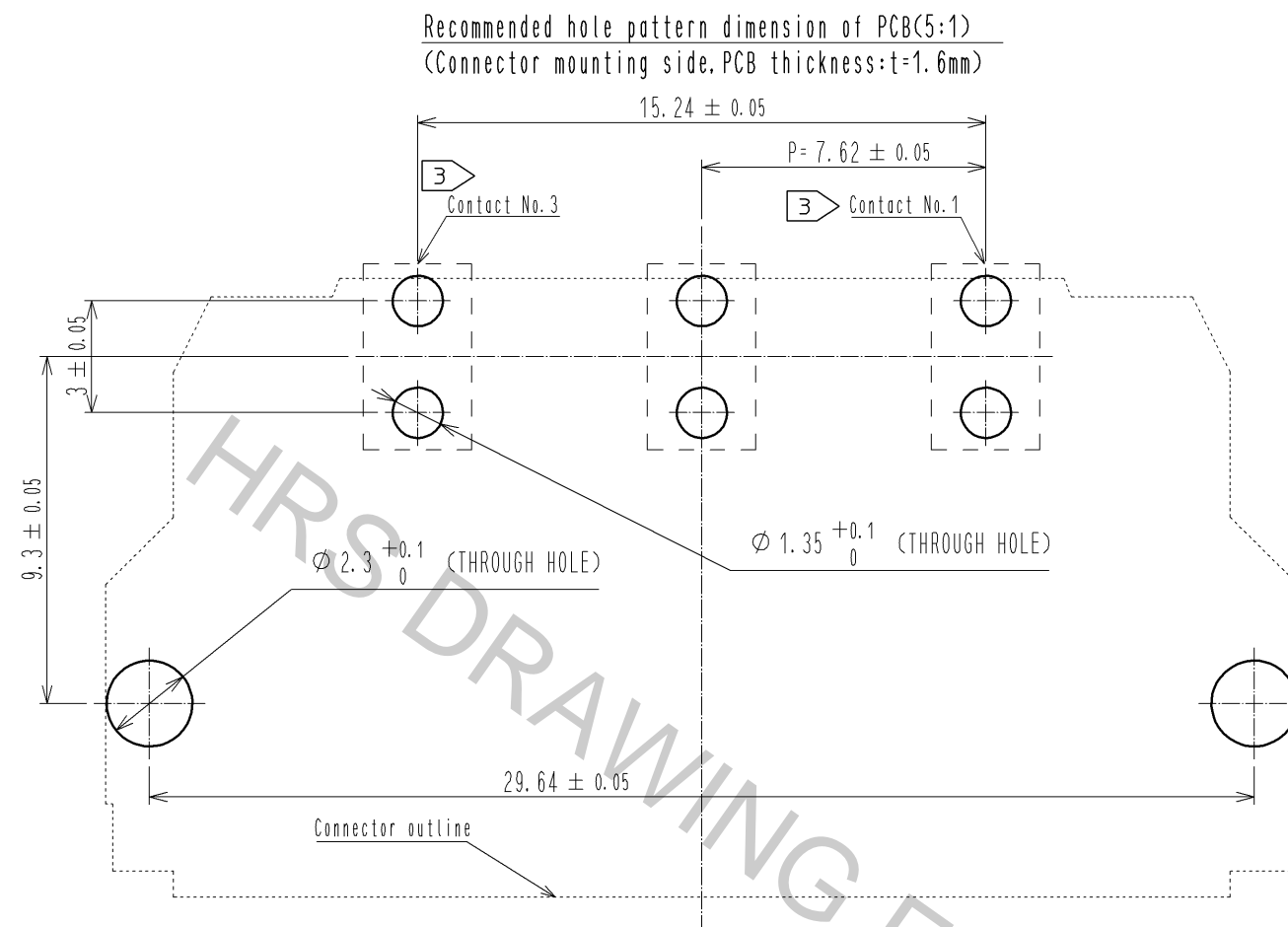
A
B
C
D
E
F



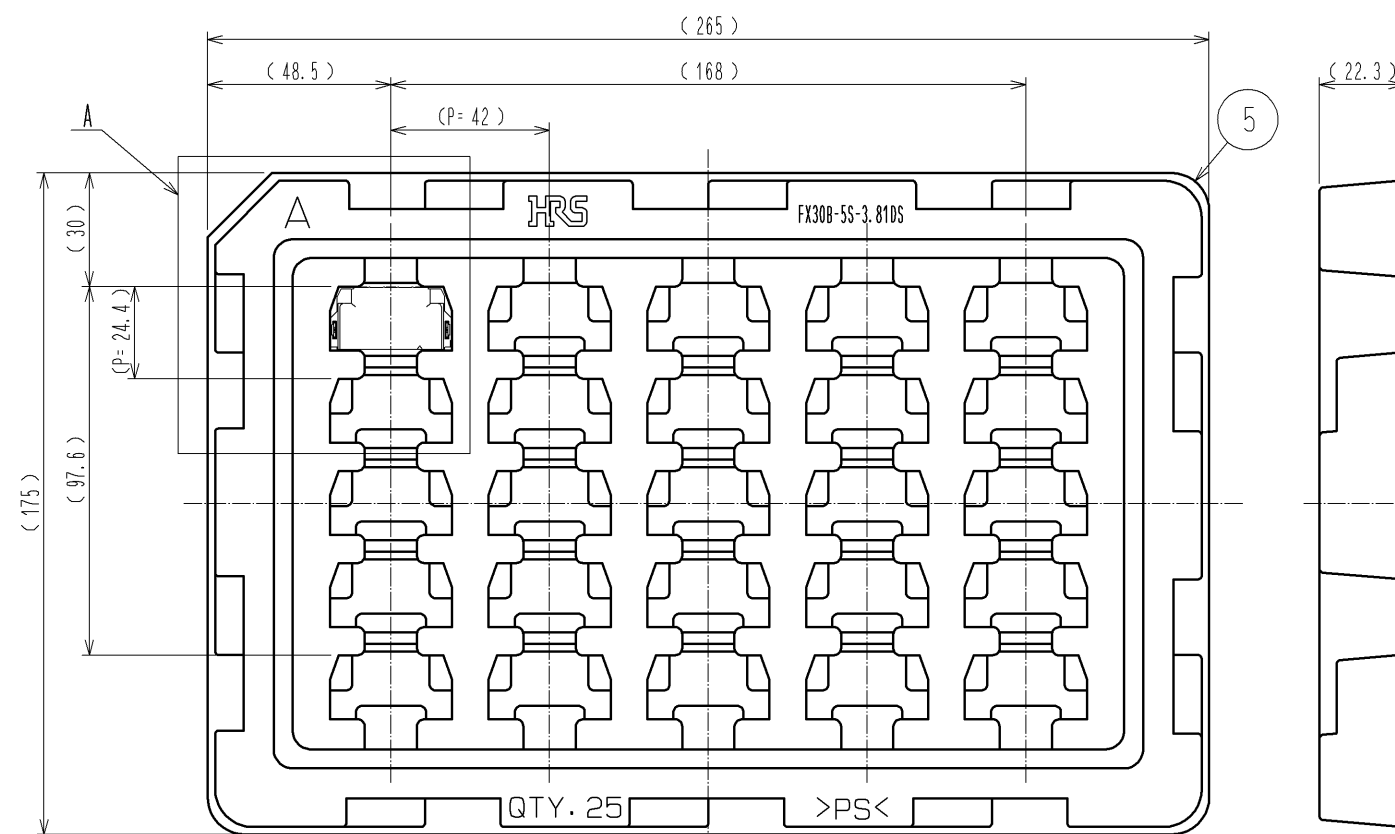
NOTE 1 This product is packaged in tray.(25pcs/tray)
2 Blemish and hit mark can be occurred through out the manufacturing process
whitch dosen' t affect quality level.
Also, black spot could be observed on the surface of housing.
3 For the contact NO., adjacent two pairs of leads placed back-to-back (4 leads in total)
Compose one line.
4 Misalignment absorbing range:±0.3mm max.
5 The dimension in parentheses are for references.
6 Lot NO. is indicated at either one of the position as shown.
7 Possible short shot and/or burr at the indicated area does not affect the product quality.



			5	Polystyrene					
			4	Phosphor bronze	Tin-plating 3.0μm Under plating:Nickel 1.0μm				
2	Copper alloy	Contact area:Gold-plating 0.1μm	3	Copper alloy	Contact area:Gold-plating 0.1μm				
		Lead area:Tin-plating 1.0μm			Lead area:Tin-plating 1.0μm				
		Under plating:Nickel 1.0μm			Under plating:Nickel 1.0μm				
1	Polyamide	Black UL94V-0							
NO.	MATERIAL	FINISH .		REMARKS	NO.	MATERIAL	FINISH .		REMARKS
UNITS mm		SCALE 2 : 1		COUNT	DESCRIPTION OF REVISIONS		DESIGNED	CHECKED	DATE
 HIROSE ELECTRIC CO., LTD.		APPROVED : HS. OKAWA	14. 09. 12	DRAWING NO. EDC3-359167-00					
		CHECED : KN. SHIBUYA	14. 09. 12	PART NO. FX30B-3S-7. 62DS					
		DESIGNED : DK. AIMOTO	14. 09. 12	CODE NO. CL570-3605-0-00					
		DRAWN : DK. AIMOTO	14. 09. 12	 1/2					

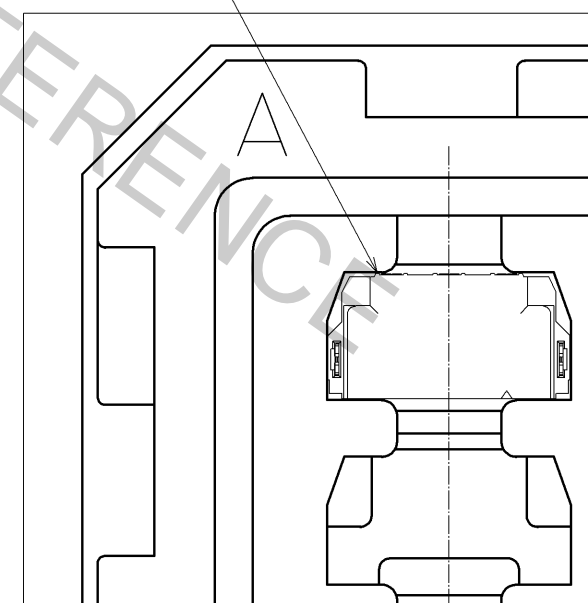


1 Drawing for packaging(1:2)



A(1:1)

FX30B-3S-7.62DS



HRS

DRAWING NO.	EDC3-359167-00
PART NO.	FX30B-3S-7.62DS
CODE NO.	CL570-3605-0-00

2/2