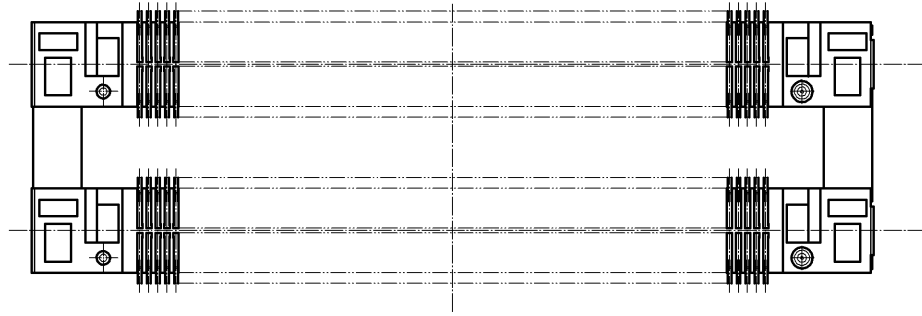
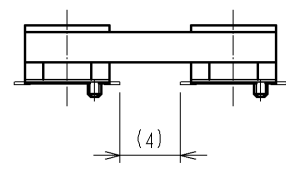
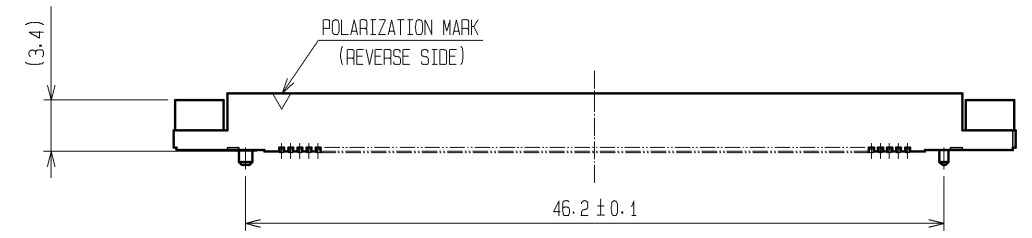
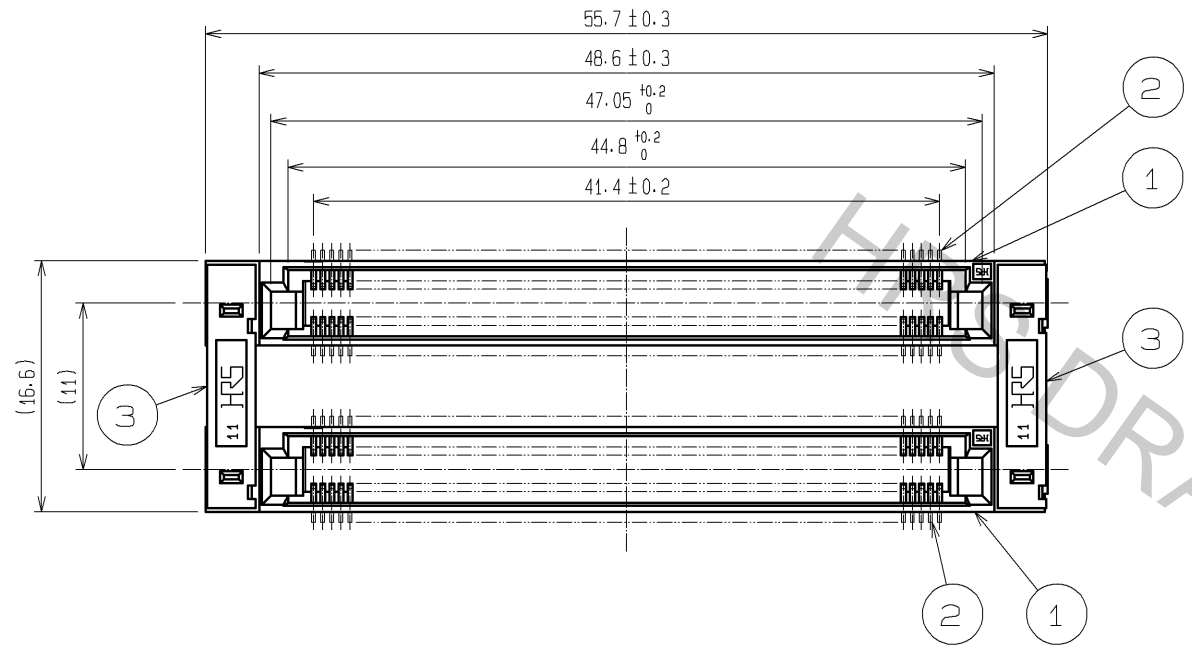
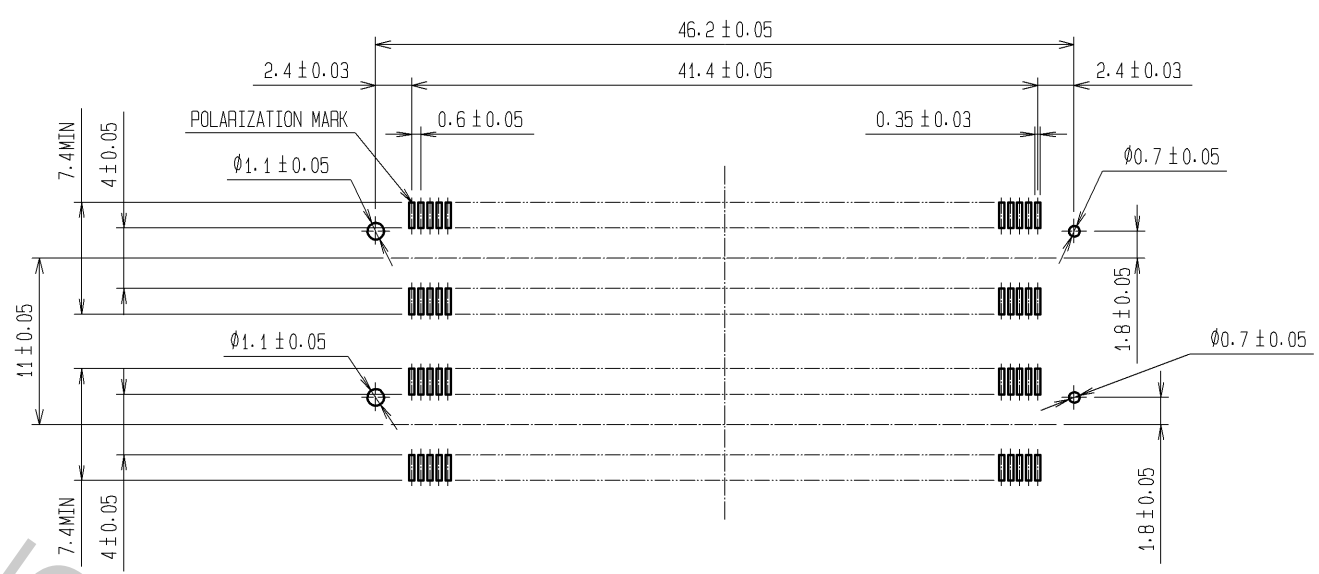


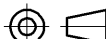


Oct.1.2018 Copyright 2018 HIROSE ELECTRIC CO., LTD. All Rights Reserved.
In case that the application demands a high level of reliability, such as automotive,
please contact a company representative for further information.



RECOMMENDED LAND PATTERN DIMENSION OF PCB (MOUNTING SIDE)
(RECOMMENDED METAL MASK THICKNESS:0.15mm)

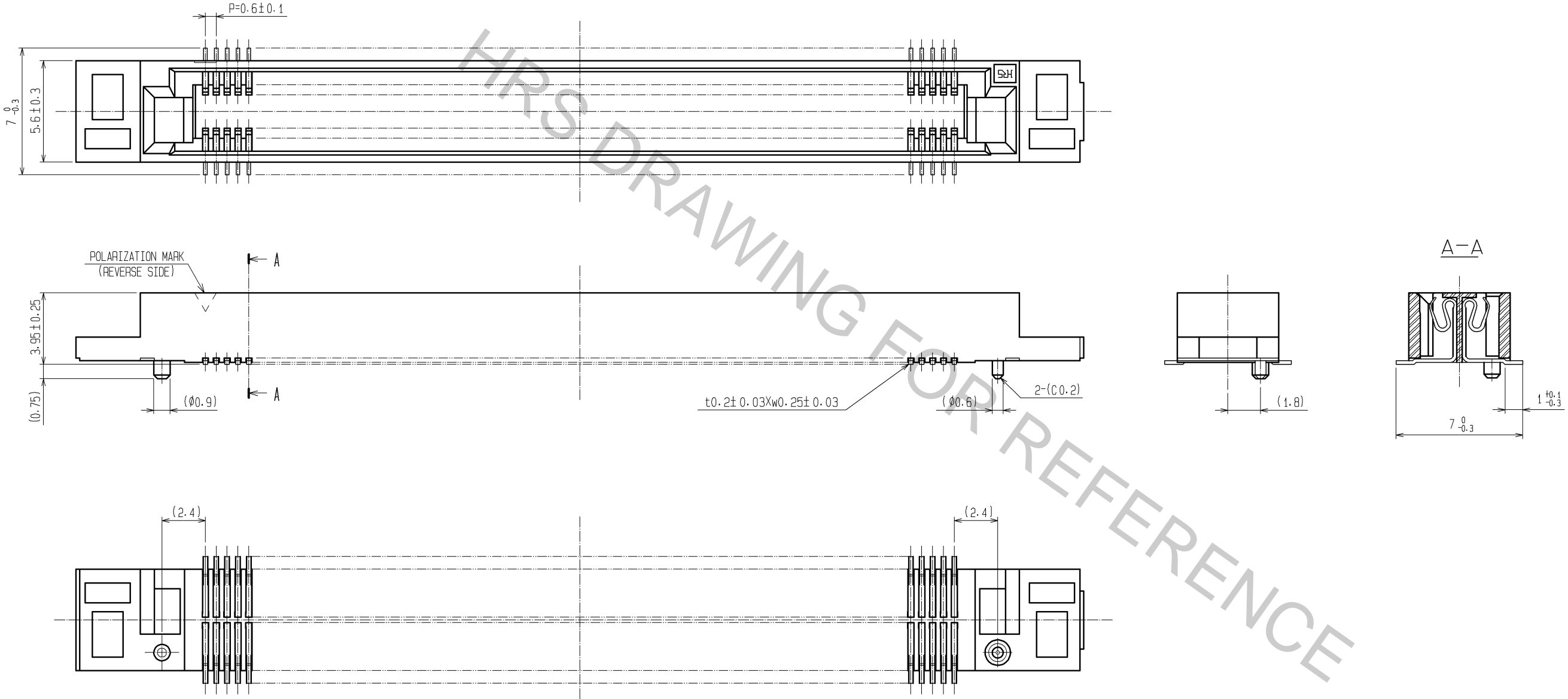


- NOTES
- 1 LEAD CO-PLANARITY SHALL BE 0.1mm MAX.
 - 2 AFTER MOUNTING BOARD, REF.NO.3 SHALL BE REMOVED.
 - 3 FOR MODIFICATION, ETC., PREVENTIVE HOLE FOR SINK MARK MAY BE ADDED DEPENDS ON CIRCUMSTANCES.
 - 4 THE DIMENSIONS IN PARENTHESES ARE FOR REFERENCE.

1, 3	PPS	LIGHT BROWN (UL94V-0)	2	PHOSPHOR BRONZE	CONTACT AREA:GOLD 0.1μm min				
					LEAD AREA:GOLD 0.03μm min.				
					UNDER PLATING:NICKEL 1.5μm min				
NO.	MATERIAL	FINISH , REMARKS		NO.	MATERIAL	FINISH , REMARKS			
UNITS mm		SCALE 2 : 1		COUNT	DESCRIPTION OF REVISIONS		DESIGNED	CHECKED	DATE
 HIROSE ELECTRIC CO., LTD.		APPROVED : HS. OKAWA		14. 02. 05	DRAWING NO.		EDC3-150965-25		
		CHECKED : HT. YAMAGUCHI		14. 02. 05	PART NO.		FX8C-140/140S11-SVJ(71)		
		DESIGNED : YJ. ASAO		14. 02. 05	CODE NO.		CL578-0907-3-71		
		DRAWN : YJ. ASAO		14. 02. 05					
						1/2			

Oct.1.2018 Copyright 2018 HIROSE ELECTRIC CO., LTD. All Rights Reserved.
In case that the application demands a high level of reliability, such as automotive,
please contact a company representative for further information.

DETAIL AFTER REMOVING JOINT(4:1)



NOTE THE DIMENSIONS IN PARENTHESES ARE FOR REFERENCE.

HRS	DRAWING NO.	EDC3-150965-25	
	PART NO.	FX8C-140/140S11-SVJ(71)	
	CODE NO.	CL578-0907-3-71	$\triangle \frac{2}{2}$