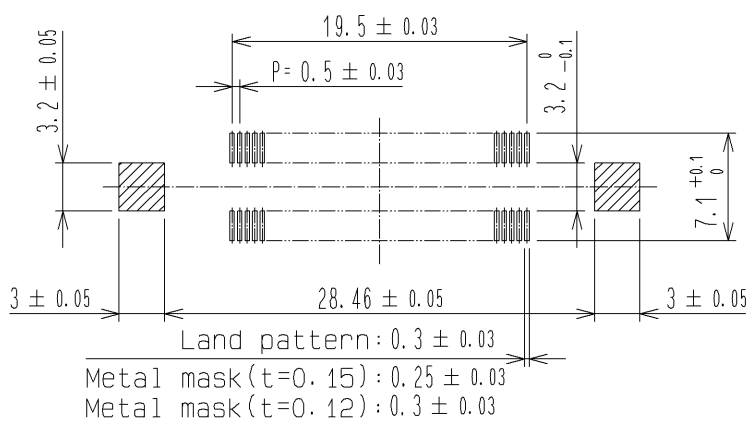
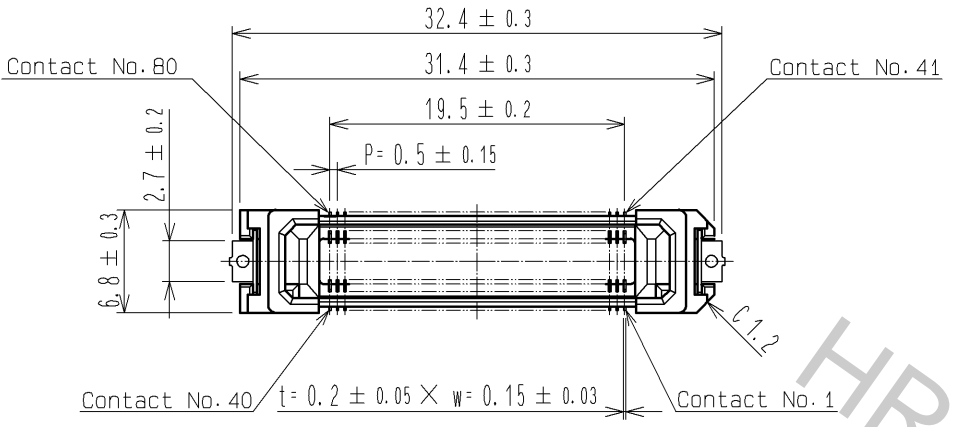
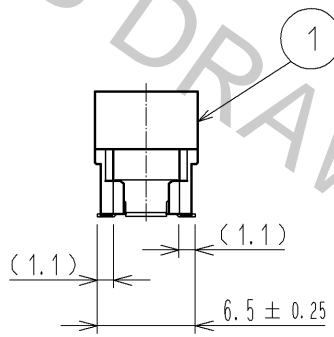
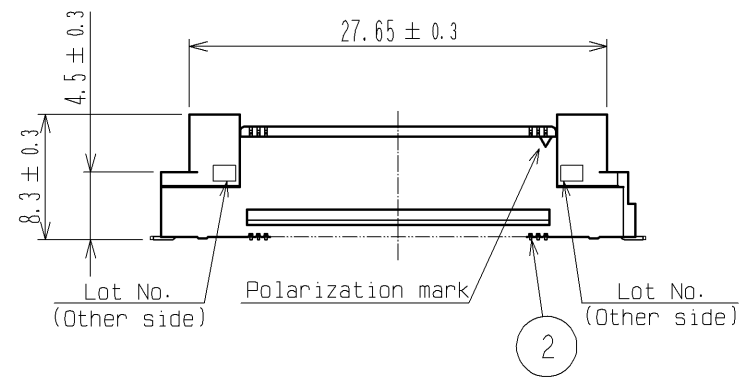


Oct.1.2018 Copyright 2018 HIROSE ELECTRIC CO., LTD. All Rights Reserved.
In case that the application demands a high level of reliability, such as automotive,
please contact a company representative for further information.

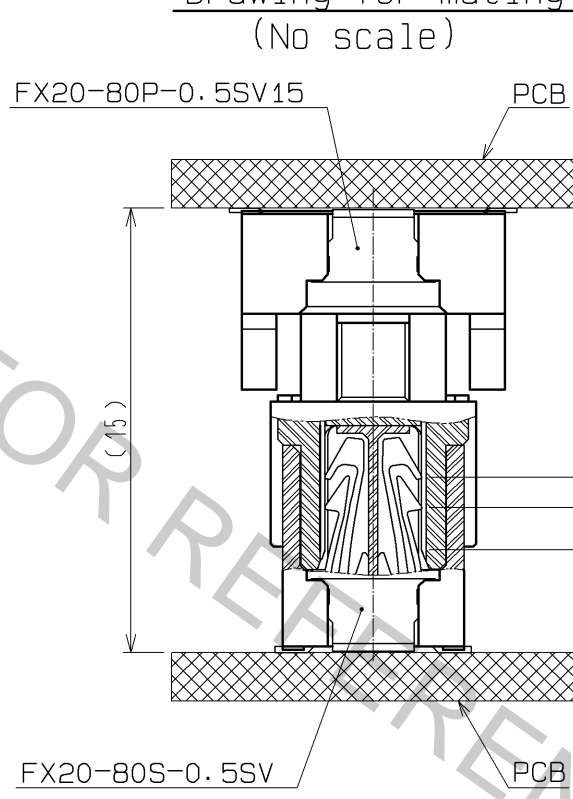
Recommended land pattern dimension of PCB



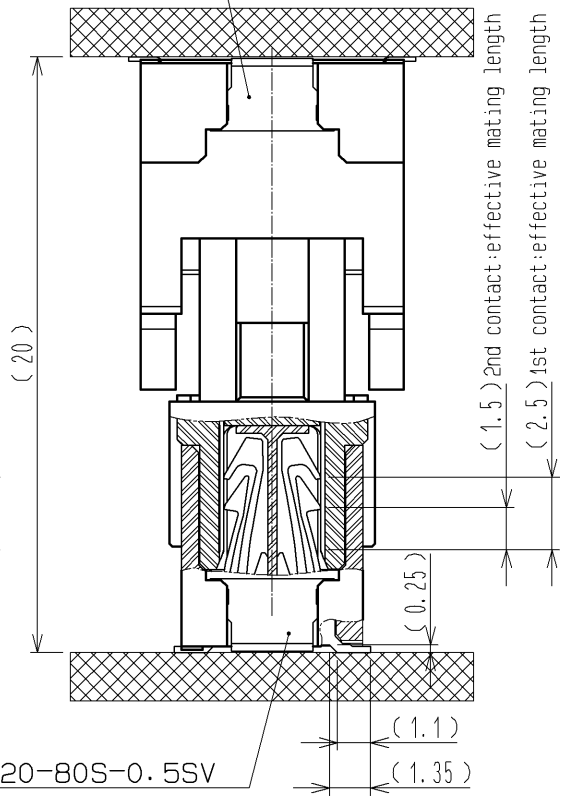
Drawing for mating
(No scale)



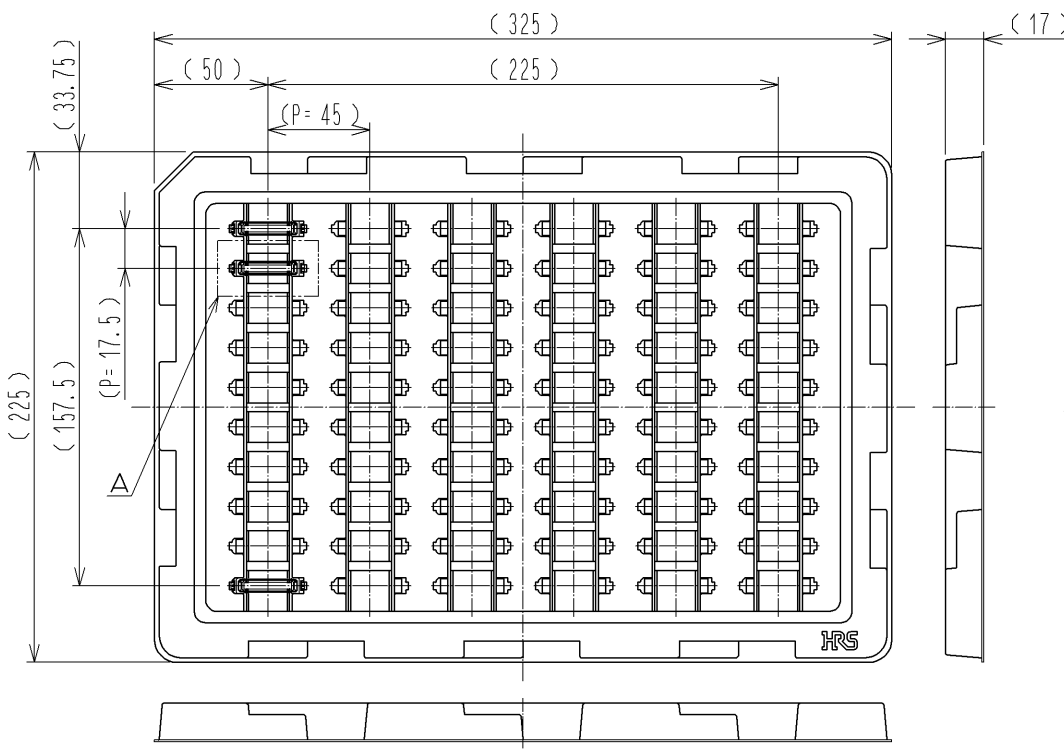
Drawing for mating
(No scale)



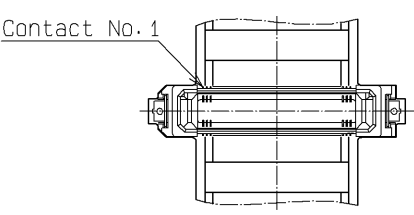
FX20-80P-0.5SV20



2 Drawing for packing(No scale)



$\Delta (1 : 1)$



- 1 Lead CO-Planarity is 0.1mm MAX.
- 2 This is packaged in tray. (60pcs/tray)
- 3 Blemish and hit mark can be occurred through out the manufacturing process which doesn't affect quality level.
- 4 Please note that excessive wrenching force could damage this connector.
Please refer to the guideline for detailed regulations of the mating method.
- 5 The dimensions in parentheses are for references.

1	LCP	BLACK UL94V-0	3	BRASS	TIN-PLATING $1 \mu m$
			2	PHOSPHOR BRONZE	CONTACT AREA:GOLD $0.1 \mu m$ LEAD AREA:GOLD $0.03 \mu m$ UNDER PLATING:NICKEL $1 \mu m$
NO.	MATERIAL	FINISH , REMARKS	NO.	MATERIAL	FINISH , REMARKS
UNITS mm		SCALE 2 : 1	COUNT 	DESCRIPTION OF REVISIONS	DESIGNED CHECKED DATE
APPROVED : HS. OKAWA			13.10.07	DRAWING NO. EDC3-336340-00	
CHECKED : KI. HIROKAWA			13.10.07	PART NO. FX20-80S-0.5SV	
DESIGNED : TS. OONO			13.10.07	CODE NO. CL570-1103-0-00	
DRAWN : TS. OONO			13.10.07		