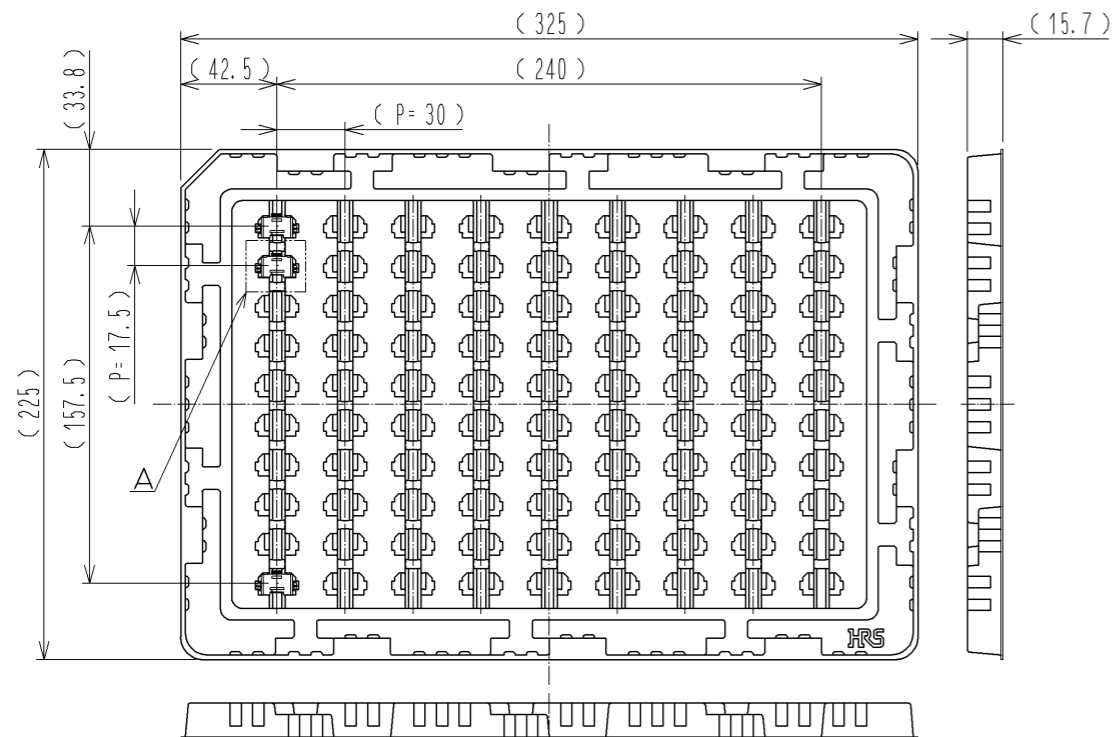
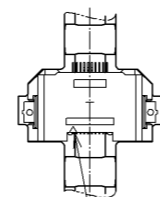


2> Drawing for packing(No scale)

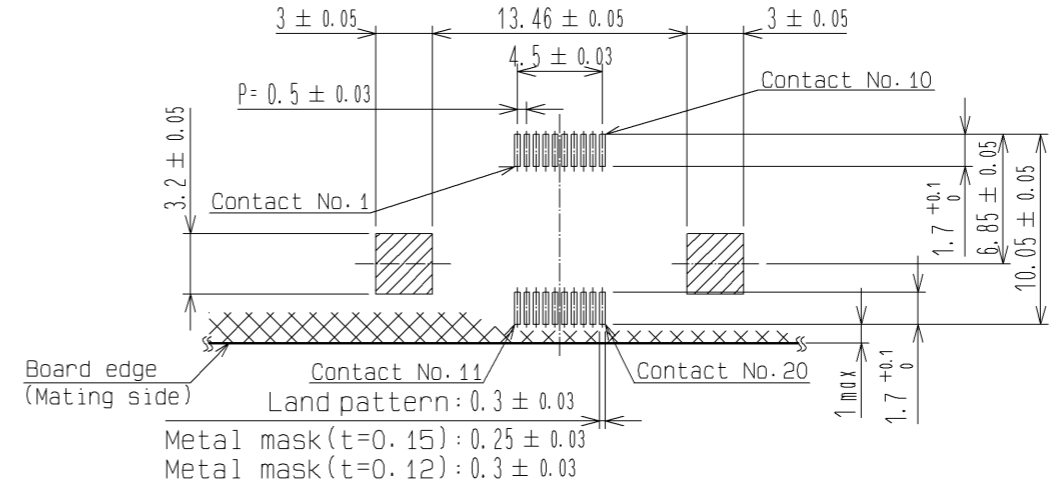


A (1:1)

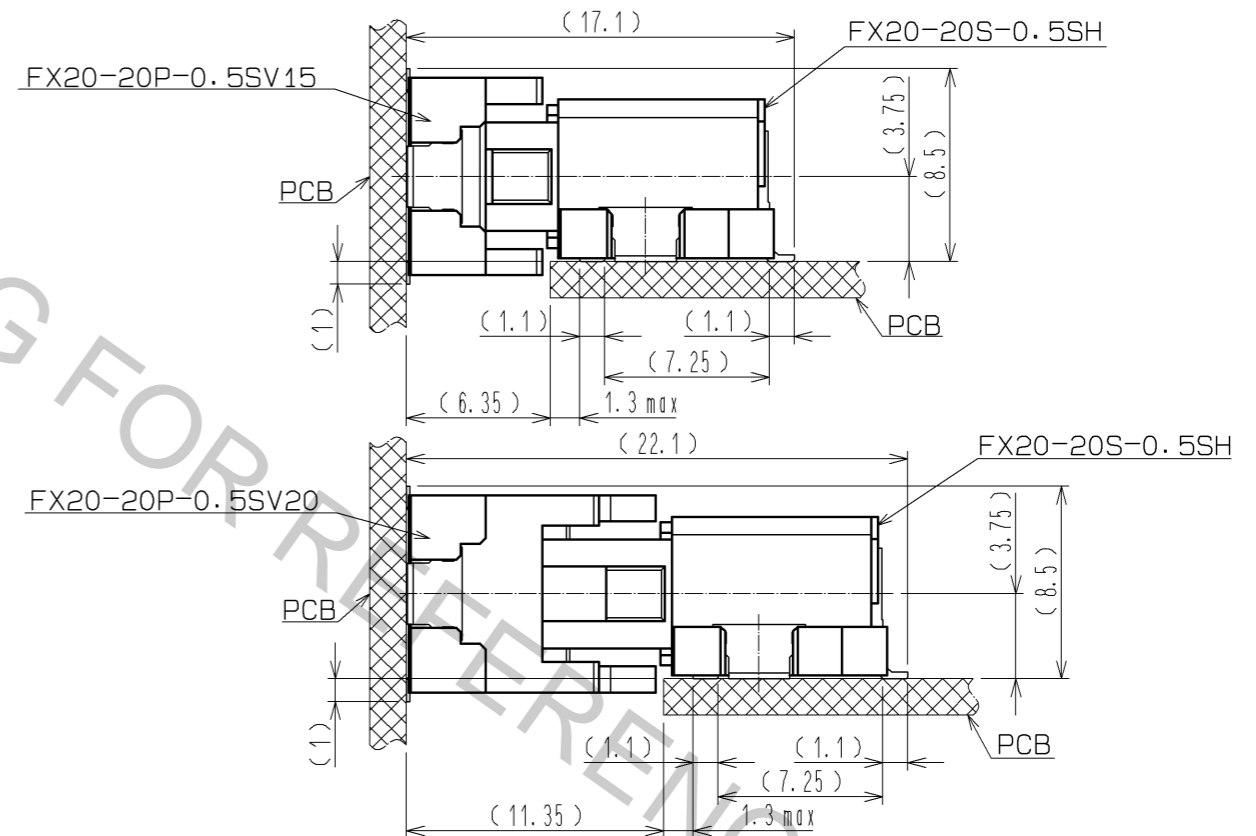


Polarization mark

5> Recommended land pattern dimension of PCB



Drawing for mating(No scale)



- 1 Lead CO-Planarity is 0.1mm MAX.
- 2 This is packaged in tray.(90pcs/tray)
- 3 Blemish and hit mark can be occurred through out the manufacturing process which dosen't affect quality level.
- 4 Please note that excessive wrenching force could damage this connector. Please refer to the guideline for detailed regulations of the mating method.
- 5 No prohibited area for printing pattern or via hole. PCB resist can be printed optionally.
- 6 The dimensions in parentheses are for references.

1	LCP	BLACK UL94V-0	4	BRASS	TIN-PLATING 1μm
			2, 3	PHOSPHOR BRONZE	CONTACT AREA:GOLD 0.1μm LEAD AREA:GOLD 0.03μm UNDER PLATING:NICKEL 1μm
NO.	MATERIAL	FINISH , REMARKS	NO.	MATERIAL	FINISH , REMARKS
UNITS mm		SCALE 2 : 1	COUNT 	DESCRIPTION OF REVISIONS	DESIGNED
APPROVED : HS. OKAWA			13.09.25	DRAWING NO.	EDC3-350411-00
CHECKED : KI. HIROKAWA			13.09.25	PART NO.	FX20-20S-0.5SH
DESIGNED : TS. OONO			13.09.25	CODE NO.	CL570-1611-1-00
DRAWN : TS. OONO			13.09.25		