

| | | | | | |
|------|-------|------|-----|-----------------------------------|---------|
| 36.6 | 34.85 | 31.2 | 29 | 52610-3033 | 30 |
| 34.6 | 32.85 | 29.2 | 27 | 52610-2833 | 28 |
| 32.6 | 30.85 | 27.2 | 25 | 52610-2633 | 26 |
| 31.6 | 29.85 | 26.2 | 24 | 52610-2533 | 25 |
| 30.6 | 28.85 | 25.2 | 23 | 52610-2433 | 24 |
| 29.6 | 27.85 | 24.2 | 22 | 52610-2333 | 23 |
| 28.6 | 26.85 | 23.2 | 21 | 52610-2233 | 22 |
| 27.6 | 25.85 | 22.2 | 20 | 52610-2133 | 21 |
| 26.6 | 24.85 | 21.2 | 19 | 52610-2033 | 20 |
| 25.6 | 23.85 | 20.2 | 18 | 52610-1933 | 19 |
| 24.6 | 22.85 | 19.2 | 17 | 52610-1833 | 18 |
| 23.6 | 21.85 | 18.2 | 16 | 52610-1733 | 17 |
| 22.6 | 20.85 | 17.2 | 15 | 52610-1633 | 16 |
| 21.6 | 19.85 | 16.2 | 14 | 52610-1533 | 15 |
| 20.6 | 18.85 | 15.2 | 13 | 52610-1433 | 14 |
| 19.6 | 17.85 | 14.2 | 12 | 52610-1333 | 13 |
| 18.6 | 16.85 | 13.2 | 11 | 52610-1233 | 12 |
| 17.6 | 15.85 | 12.2 | 10 | 52610-1133 | 11 |
| 16.6 | 14.85 | 11.2 | 9 | 52610-1033 | 10 |
| 15.6 | 13.85 | 10.2 | 8 | 52610-0933 | 9 |
| 14.6 | 12.85 | 9.2 | 7 | 52610-0833 | 8 |
| 13.6 | 11.85 | 8.2 | 6 | 52610-0733 | 7 |
| 12.6 | 10.85 | 7.2 | 5 | 52610-0633 | 6 |
| 11.6 | 9.85 | 6.2 | 4 | 52610-0533 | 5 |
| D | (C) | B | (A) | EMBOSSED PACKAGE ORDER No. オーダー番号 | 極数 CKT. |

CONNECTOR SERIES NO. : 52610-**22

| | | | | | | | | | | | |
|--|-------------|--|------------|----------------------------|--|---|------------------------|---------------------------|--|--|--------------|
| REVISED EC NO: J2014-0096 DRAWN: AISHI CHKD: TAKAHASHI APPR: YNOGAWA | DESCRIPTION | GENERAL TOLERANCES (UNLESS SPECIFIED) | | DIMENSION STYLE MM ONLY | | SCALE --- | DESIGN UNITS METRIC | THIRD ANGLE PROJECTION | | | |
| | | 10 UNDER | ±0.2 | DRAWN BY NASANUMA | DATE 2012/09/04 | TITLE 1.0 FPC CONN ZIF S/T HOUSING ASSY | | | | | |
| | | 10 OVER 30 UNDER | ±0.25 | CHECKED BY TAKAHASHI | DATE 2012/09/04 | | | | | | |
| | | 30 OVER | ±0.3 | APPROVED BY KMORIKAWA | DATE 2013/03/15 | molex | | | | | |
| | | ANGULAR ±3 ° | | MATERIAL NO. | | | | | | | DOCUMENT NO. |
| | REV | DRAFT WHERE APPLICABLE MUST REMAIN WITHIN DIMENSIONS | | SEE CHART | | SD-52610-048 | | | | | 1 OF 2 |
| B | | | SIZE A3 | | THIS DRAWING CONTAINS INFORMATION THAT IS PROPRIETARY TO MOLEX INCORPORATED AND SHOULD NOT BE USED WITHOUT WRITTEN PERMISSION | | | | | | |

10 9 8 7 6 5 4 3 2 1

F

E

D

C

B

A

F

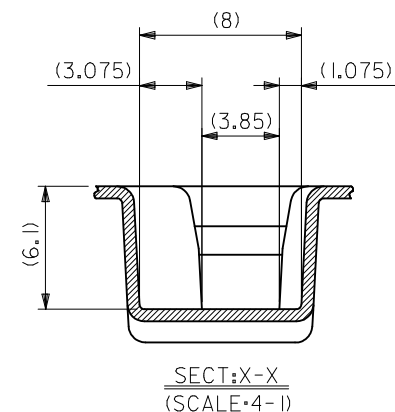
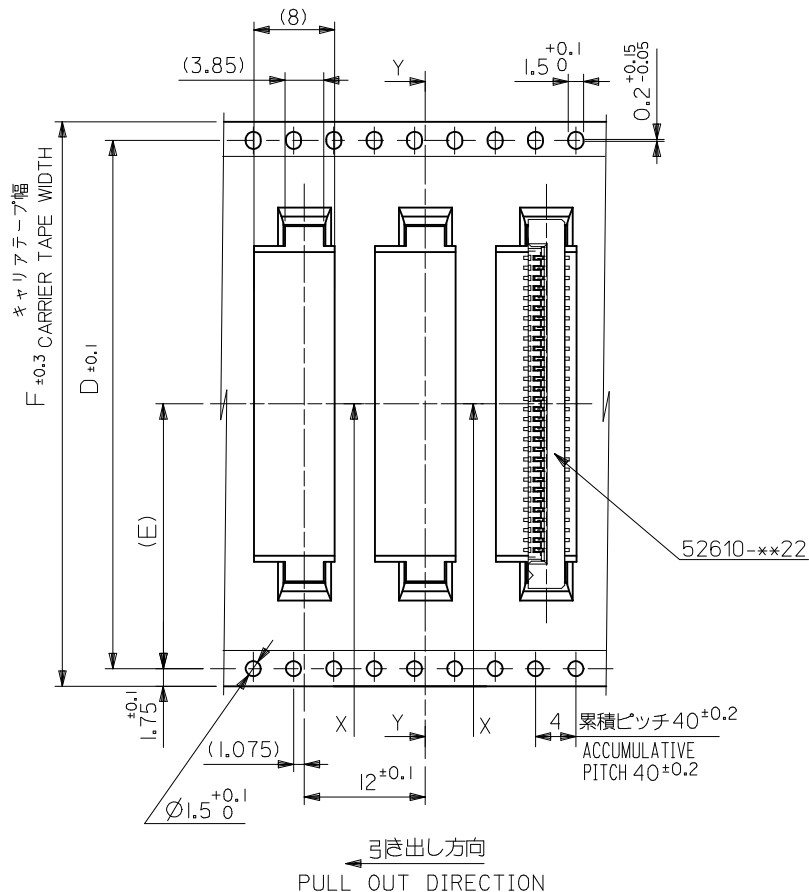
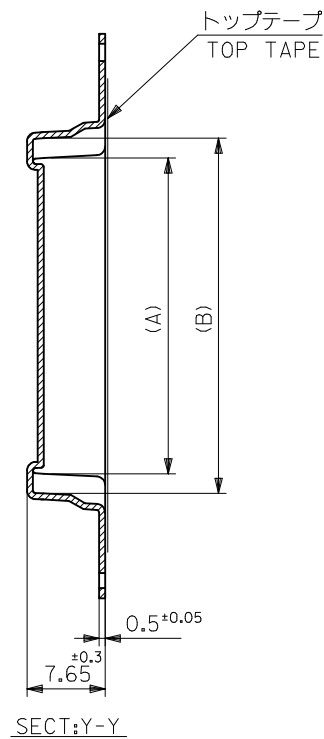
E

D

C

B

A



| | | | | | | | |
|----|------|------|------|-------|-------|------------|------------|
| 56 | 26.2 | 52.4 | 57.5 | 35.25 | 31.32 | 52610-3033 | 30 |
| | | | | 33.25 | 29.32 | 52610-2833 | 28 |
| | | | | 31.25 | 27.32 | 52610-2633 | 26 |
| | | | | 30.25 | 26.32 | 52610-2533 | 25 |
| | | | | 29.25 | 25.32 | 52610-2433 | 24 |
| | | | | 28.25 | 24.32 | 52610-2333 | 23 |
| | | | | 27.25 | 23.32 | 52610-2233 | 22 |
| 44 | 20.2 | 40.4 | 46.5 | 26.25 | 22.32 | 52610-2133 | 21 |
| | | | | 25.25 | 21.32 | 52610-2033 | 20 |
| | | | | 24.25 | 20.32 | 52610-1933 | 19 |
| | | | | 23.25 | 19.32 | 52610-1833 | 18 |
| | | | | 22.25 | 18.32 | 52610-1733 | 17 |
| | | | | 21.25 | 17.32 | 52610-1633 | 16 |
| | | | | 20.25 | 16.32 | 52610-1533 | 15 |
| | | | | 19.25 | 15.32 | 52610-1433 | 14 |
| 32 | 14.2 | 28.4 | 33.5 | 18.25 | 14.32 | 52610-1333 | 13 |
| | | | | 17.25 | 13.32 | 52610-1233 | 12 |
| | | | | 16.25 | 12.32 | 52610-1133 | 11 |
| F | (E) | D | C | (B) | (A) | ENG. NO. | 極数 CKT. |

| | | | | | | | | |
|---|--|--|----------------------------|--------------------|--|------------------------|---------------------------|--|
| SEE SHEET 1 OF 3 EC NO: J2014-0352 DRWN:NASUNUMA 2013/08/26 CHKD:KATAHASHI 2013/08/27 APPR:YNOGAWA 2013/08/30 | GENERAL TOLERANCES (UNLESS SPECIFIED) | | DIMENSION STYLE MM ONLY | | SCALE --- | DESIGN UNITS METRIC | THIRD ANGLE PROJECTION | |
| | 10 UNDER | ± --- | DRAWN BY NASANUMA | DATE 2012/09/05 | TITLE EMBOSSD TAPE PACKAGED FOR 1.0 FPC CONN ZIF S/T HOUSING ASSY molex | | | |
| | 10 OVER 30 UNDER | ± --- | CHECKED BY KATAHASHI | DATE 2012/09/05 | | | | |
| | 30 OVER | ± --- | APPROVED BY KMORIKAWA | DATE 2013/03/15 | | | | |
| | ANGULAR ± --- ° | | MATERIAL NO. | | DOCUMENT NO. | | SHEET NO. | |
| DRAFT WHERE APPLICABLE MUST REMAIN WITHIN DIMENSIONS | | SEE CHART | | SD-52610-049 | | 3 OF 3 | | |
| A | REV | THIS DRAWING CONTAINS INFORMATION THAT IS PROPRIETARY TO MOLEX INCORPORATED AND SHOULD NOT BE USED WITHOUT WRITTEN PERMISSION | | | | | | |

9 8 7 6 5 4 3 2

10

9

8

7

6

5

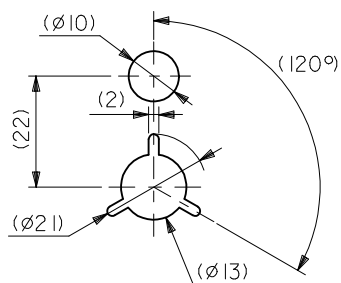
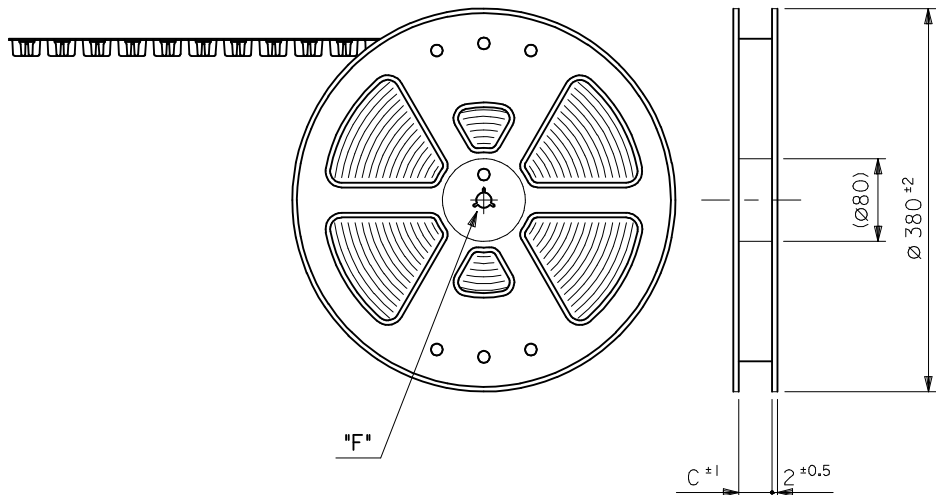
4

3

2

1

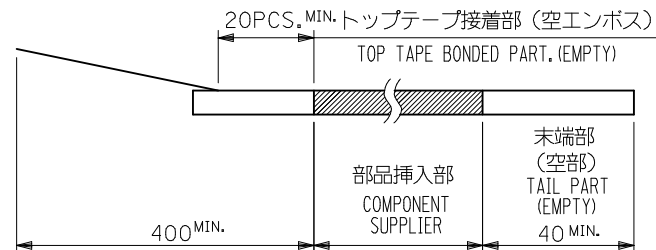
引き出し方向

PULL OUT
DIRECTION

DETAIL "F"

NOTES

- 52610-**-22のアクチュエータはハウジング内に押し下げた状態とする。
詳細寸法については図面SD-52610-048をご参照ください。
ACTUATOR OF PART NO. 52610-**-22 SHOULD BE LOCKED.
RE DETAILED DIMENSIONS, SEE SD-52610-048
- 梱包数量: 1000個/リール
NUMBER OF CONNECTORS : 1000PCS/REEL
- リードテープ長さ
LEAD TAPE LENGTH

引き出し方向
PULL OUT
DIRECTION

- カバーテープの剥離強度については、IEC60286-3に準拠
COVER TAPE PEEL FORCE IS DEFINED BY IEC60286-3.
- 材料(MATERIAL)
キャリアテープ (CARRIER TAPE) : ポリプロピレン (POLYPROPYLENE)
トップテープ (TOP TAPE) : PET, PE, PEF
リール(REEL) : ポリスチレン(PS) <リサイクル材を含む>
POLYSTYRENE(PS) <RECYCLE MATERIAL CONTAINED>
- ELV及びRoHS適合品
ELV AND RoHS COMPLIANT

| | | | | | | | | | | |
|--|--|--|-----------|----------------------------|--|---|------------------------|---------------------------|--|--|
| REVISED EC NO: J2014-0352 DRWN:NASANUMA 2013/08/26 CHKD:TAKAHASHI 2013/08/27 APPR:YNOGAWA 2013/08/30 | DESCRIPTION | GENERAL TOLERANCES (UNLESS SPECIFIED) | | DIMENSION STYLE MM ONLY | | SCALE --- | DESIGN UNITS METRIC | THIRD ANGLE PROJECTION | | |
| | | 10 UNDER | ± --- | DRAWN BY NASANUMA | DATE 2012/09/05 | TITLE EMBOSS TAPE PACKAGED FOR 1.0 FPC CONN ZIF S/T HOUSING ASSY | | | | |
| | | 10 OVER 30 UNDER | ± --- | CHECKED BY TAKAHASHI | DATE 2012/09/05 | | | | | |
| | | 30 OVER | ± --- | APPROVED BY KMORIKAWA | DATE 2013/03/15 | DOCUMENT NO. molex SD-52610-049 | | | | |
| | | ANGULAR ± --- ° | | MATERIAL NO. | | | | | | |
| | DRAFT WHERE APPLICABLE MUST REMAIN WITHIN DIMENSIONS | | SEE CHART | | | | | | | |
| | REV A | | | SIZE A3 | THIS DRAWING CONTAINS INFORMATION THAT IS PROPRIETARY TO MOLEX INCORPORATED AND SHOULD NOT BE USED WITHOUT WRITTEN PERMISSION | | | | | |

9

8

7

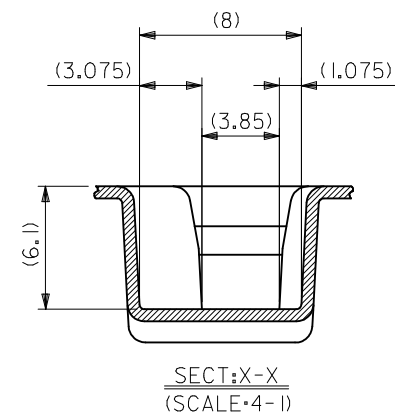
6

5

4

3

2



| | | | | | | | | | | | | |
|--|-------------------|--|--|---------------------------------------|-------|----------------------------|--|--|------------------------|---------------------------|--|--|
| SEE SHEET 1 OF 3 | EC NO: J2014-0352 | | | 2013/08/26 | | 2013/08/27 | | 2013/08/30 | | | | |
| | DRAWN:NASANUMA | | | 2013/08/26 | | 2013/08/27 | | 2013/08/30 | | | | |
| | CHK:DKTAKAHASHI | | | 2013/08/26 | | 2013/08/27 | | 2013/08/30 | | | | |
| | APPR:YNOGAWA | | | 2013/08/26 | | 2013/08/27 | | 2013/08/30 | | | | |
| | | | | | | | | | | | | |
| | | | | | | | | | | | | |
| DESCRIPTION | | | | GENERAL TOLERANCES (UNLESS SPECIFIED) | | DIMENSION STYLE MM ONLY | | SCALE --- | DESIGN UNITS METRIC | THIRD ANGLE PROJECTION | | |
| | | | | 10 UNDER | ± --- | DRAWN BY NASANUMA | DATE 2012/09/05 | TITLE EMBOSSD TAPE PACKAGED FOR 1.0 FPC CONN ZIF S/T HOUSING ASSY molex | | | | |
| | | | | 10 OVER 30 UNDER | ± --- | CHECKED BY KTAKAHASHI | DATE 2012/09/05 | | | | | |
| | | | | 30 OVER | ± --- | APPROVED BY KMORI KAWA | DATE 2013/03/15 | | | | | |
| | | | | ANGULAR ± --- ° | | MATERIAL NO. | | DOCUMENT NO. | | SHEET NO. | | |
| DRAFT WHERE APPLICABLE MUST REMAIN WITHIN DIMENSIONS | | | | | | SEE CHART | | SD-52610-049 | | 3 OF 3 | | |
| REV | | | | A | | SIZE A3 | THIS DRAWING CONTAINS INFORMATION THAT IS PROPRIETARY TO MOLEX INCORPORATED AND SHOULD NOT BE USED WITHOUT WRITTEN PERMISSION | | | | | |