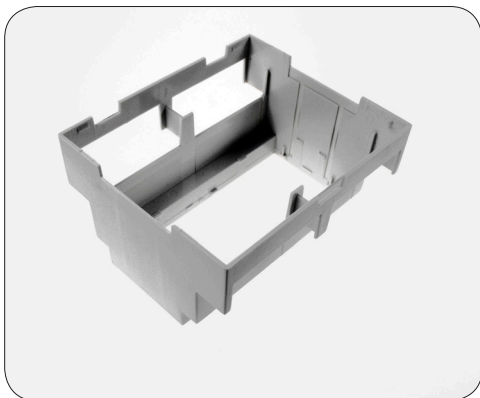
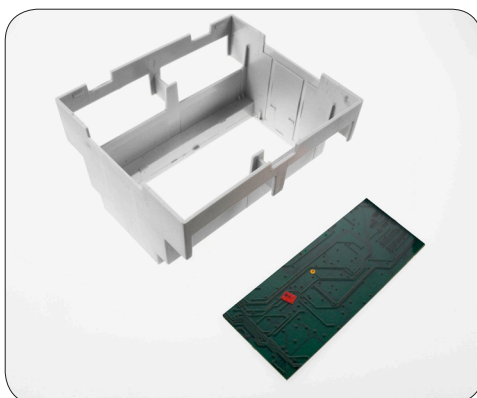


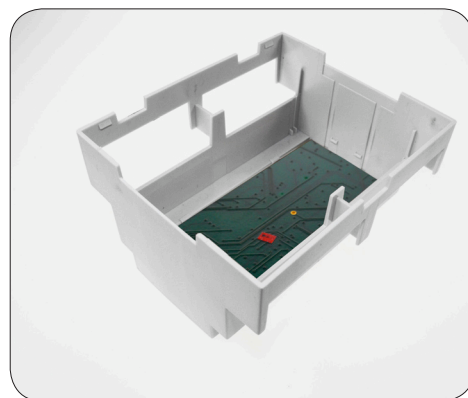
Assembly of CNMB Enclosure



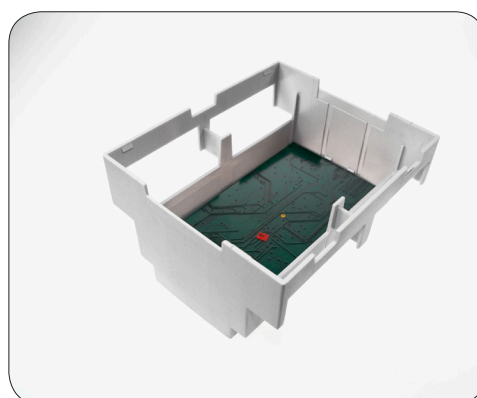
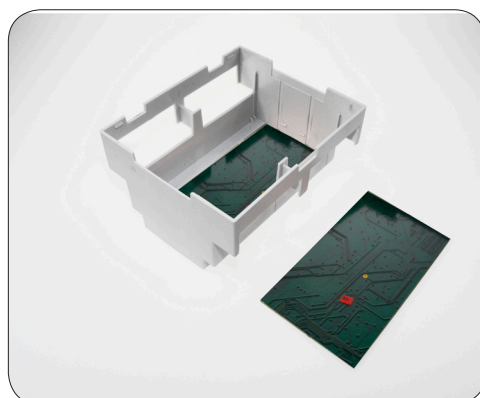
- The Module Box is designed to hold a number of PCB's which snap fit into place



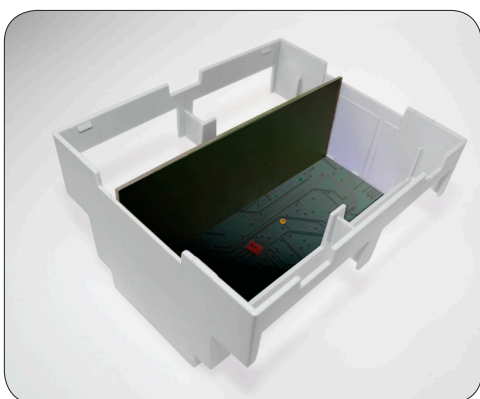
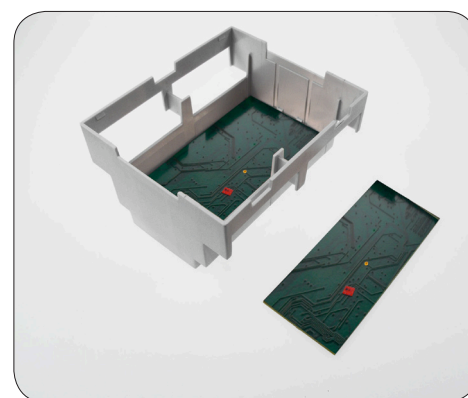
- Each Module Box can hold up to 3 PCB's horizontally and 2/4 vertically



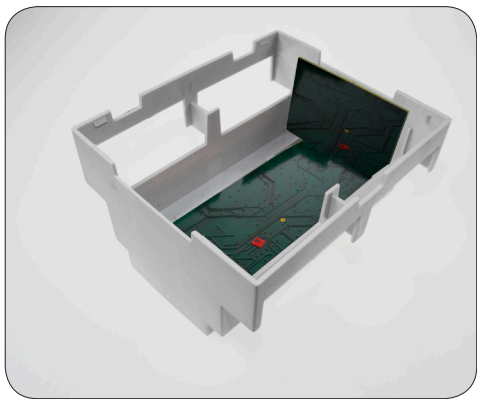
- PCB in top position



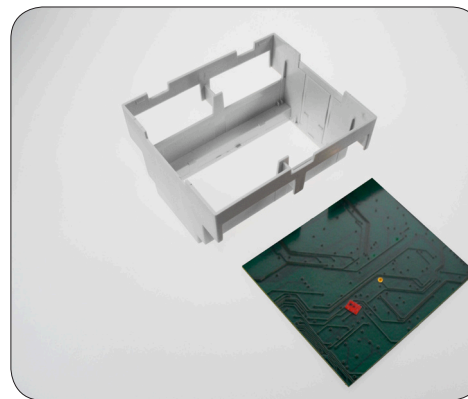
- PCB second position

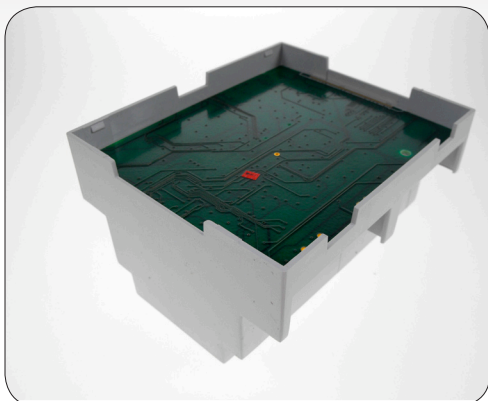


- PCB vertical mount

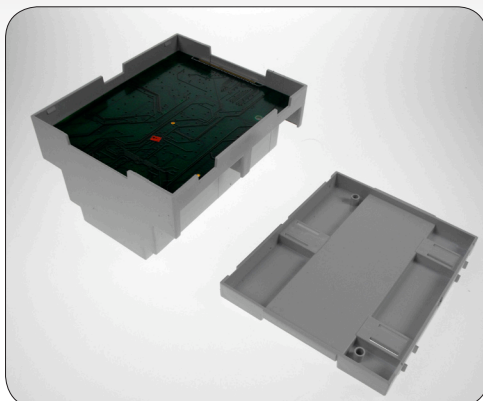


- PCB vertical mount second option

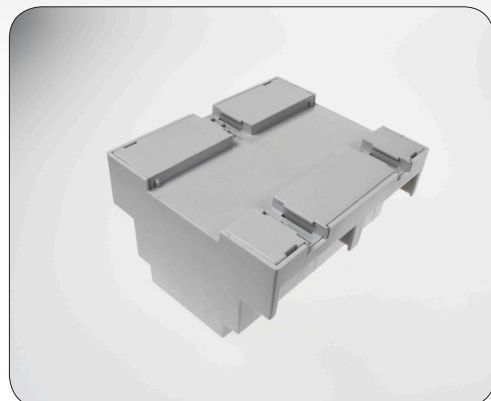




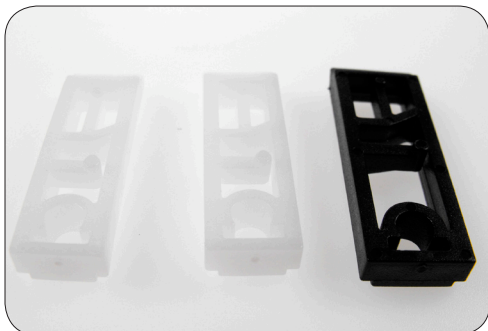
- PCB base position



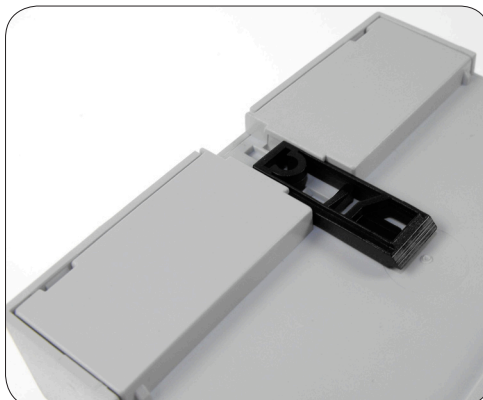
- Once the required circuitry is in place the base and top can be put on. These also snap fit into place.



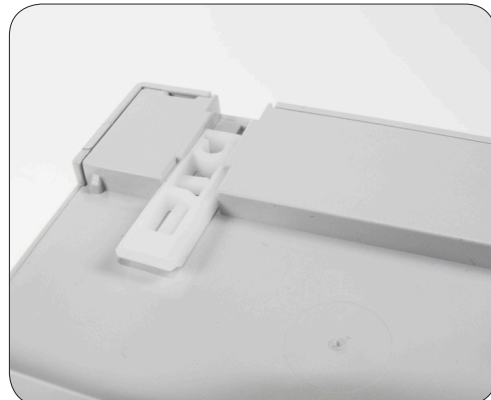
- Base is now connected



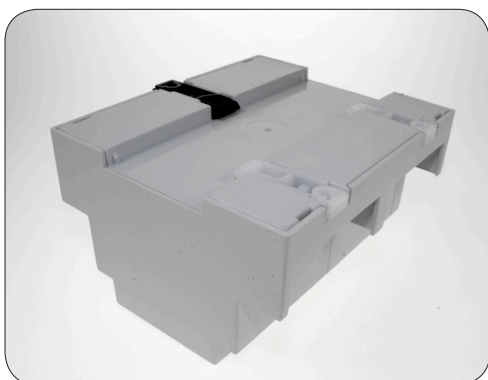
- The Module box kit comes with clips, allowing steady fastening of its base and snap fit connection to Din Rails.



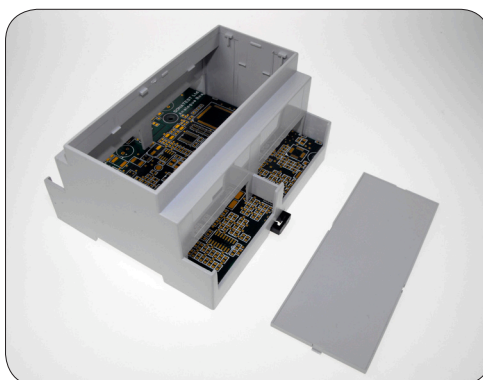
- Each clip slides and clicks into place



- Push in from the inside toward the outside



- Clips are now connected



- Module Box with top cover. (These are available in grey transparent and red)



- Top cover connected



- Various Terminal Guards are available allowing for different capabilities



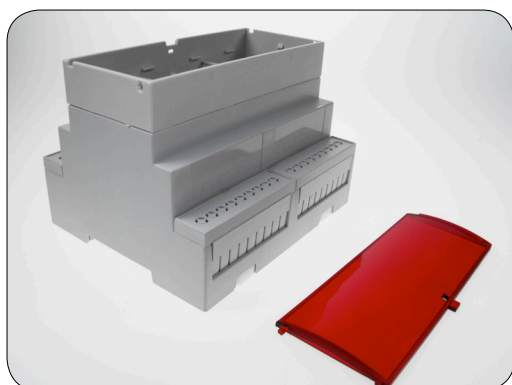
- Terminal Guards also snap fit into place and are inter-changeable



- Finished Module Box



- Also available for the CNMB series are the Extended Height Module range



- The Height Module snap clicks into place and can house an additional PCB



- The curved and hinged lids also are available in grey and transparent



- The moveable lid allowing easy access to the housed PCB board