

**NO:** PMS - 015  
**DATE:** March 2017

**PRODUCT:** EE-SX1108 – Photomicrosensor (Transmissive)  
**TYPE:** DISCONTINUATION – Streamline Product Offering

## EE-SX1108 Photomicrosensor – DISCONTINUATION Replaced By New Product Model

In an effort to streamline our product offering and with the release of new SMT model series, OMRON will discontinue both EE-SX1108 (-1) Photomicrosensor models in February 2018. The suggested replacement will be our EE-SX1320 Photomicrosensor model and it became available December 2016. Despite slight differences, the EE-SX1320 Photomicrosensor can be considered to be a functional equivalent. Please carefully read through this notification and note the differences. The following details will fully explain the discontinuation and replacement considerations; should you have any additional questions, however, please communicate with the Photomicrosensor Product Specialist.

### LAST Order date (Last Time Buy Date)

**February 28, 2018**

### All orders entered by the LTB date will be shipped by the factory by the end of:

**June, 2018**

### Product Discontinuation



Photomicrosensor (Transmissive)

**Model EE-SX1108**  
**Model EE-SX1108-1**



### Suggested Replacement

Photomicrosensor (Transmissive)

**Model EE-SX1320**  
**Model EE-SX1320**

### Differences from discontinued product:

Suggested Replacement Model	Body Color	Dimensions	Wire connection	Mounting Dimensions	Characteristics	Operation ratings	Operation methods
EE-SX1320	**	*	*	*	*	*	**

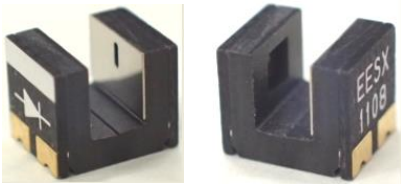

**\*\* : Compatible**

**\* : The change is little/Almost compatible**

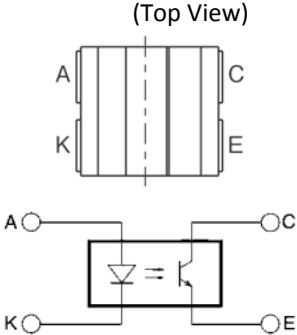
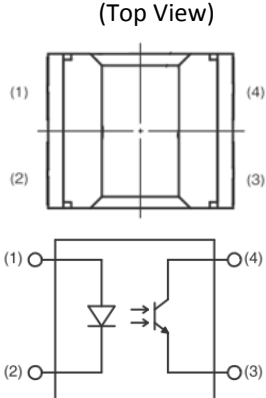
**-- : Not compatible**

**- : No corresponding specification**

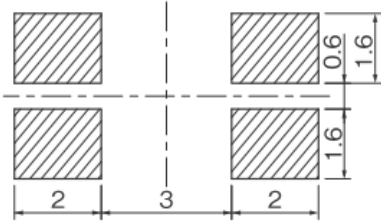
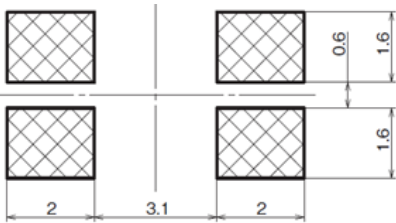
**Body Color:**

Discontinued Model EE-SX1108 (-1)	Suggested Replacement Model EE-SX1320
Black 	Black 

**Wire Connection:**

Discontinued Model EE-SX1108 (-1)	Suggested Replacement Model EE-SX1320																				
<p>Wire connection</p> <p>(Top View)</p>  <table><tr><th>Terminal No.</th><th>Name</th></tr><tr><td>A</td><td>Anode</td></tr><tr><td>K</td><td>Cathode</td></tr><tr><td>C</td><td>Collector</td></tr><tr><td>E</td><td>Emitter</td></tr></table>	Terminal No.	Name	A	Anode	K	Cathode	C	Collector	E	Emitter	<p>Wire connection</p> <p>(Top View)</p>  <table><tr><th>Terminal No.</th><th>Name</th></tr><tr><td>(1)</td><td>Anode</td></tr><tr><td>(2)</td><td>Cathode</td></tr><tr><td>(3)</td><td>Emitter</td></tr><tr><td>(4)</td><td>Collector</td></tr></table>	Terminal No.	Name	(1)	Anode	(2)	Cathode	(3)	Emitter	(4)	Collector
Terminal No.	Name																				
A	Anode																				
K	Cathode																				
C	Collector																				
E	Emitter																				
Terminal No.	Name																				
(1)	Anode																				
(2)	Cathode																				
(3)	Emitter																				
(4)	Collector																				

**Mounting Dimensions:**

Discontinued Model EE-SX1108 (-1)	Suggested Replacement Model EE-SX1320
<p>Mounting dimensions</p> 	<p>Mounting dimensions</p> 

## Dimensions:

### Discontinued Model EE-SX1108 (-1)

#### EE-SX1108(-1)

Slot width : 2mm

Dimensions(W × L × H) : 4mm × 5mm × 4mm

Emitter

Top

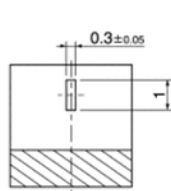
Detector



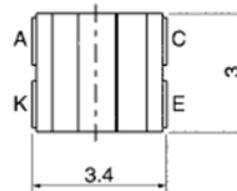
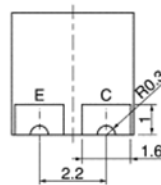
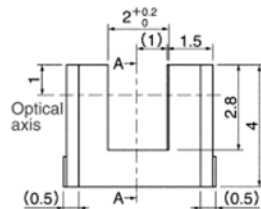
Aperture size (H x W)

Emitter	Detector
1.5×1.5	1×0.3

Terminal No.	Name
A	Anode
K	Cathode
C	Collector
E	Emitter



Cross section AA



### Suggested Replacement Model EE-SX1320

#### EE-SX1320

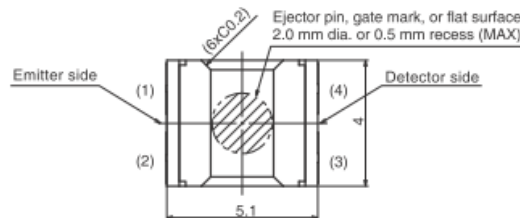
Slot width : 2mm

Dimensions(W × L × H) : 4mm × 5.1mm × 4mm

Emitter

Top

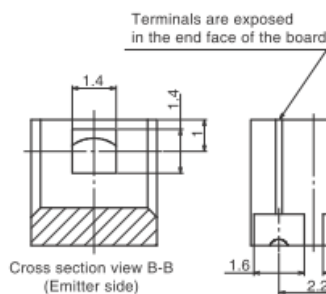
Detector



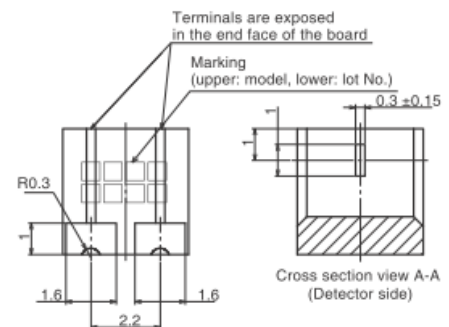
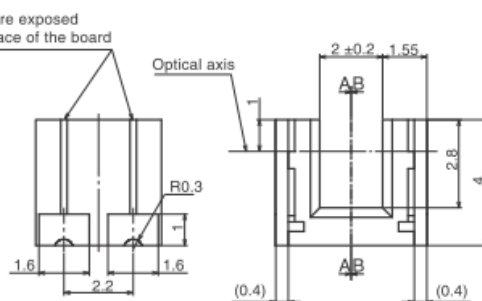
Aperture size (H x W)

Emitter	Detector
1.4×1.4	1×0.3

Terminal No.	Name
(1)	Anode
(2)	Cathode
(3)	Emitter
(4)	Collector

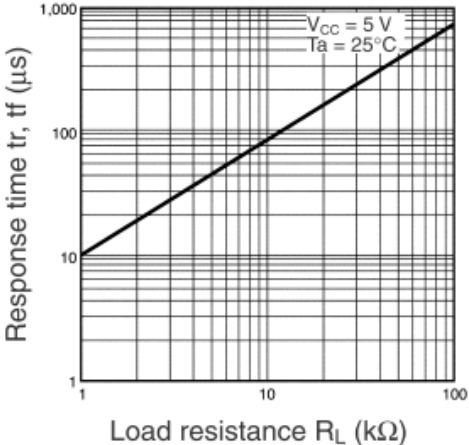
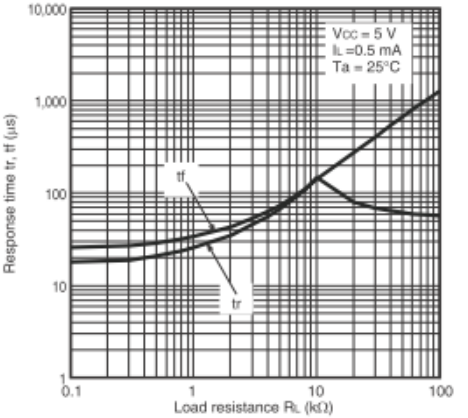
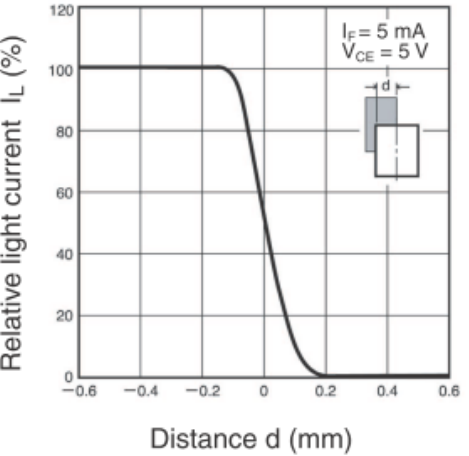
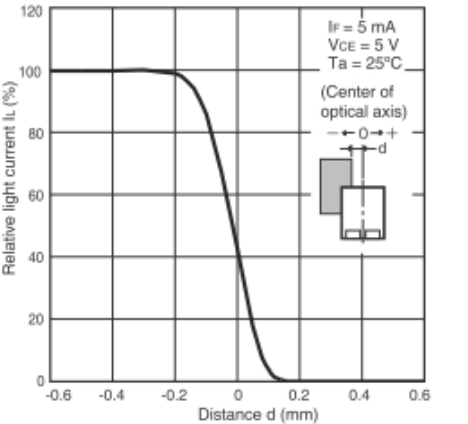
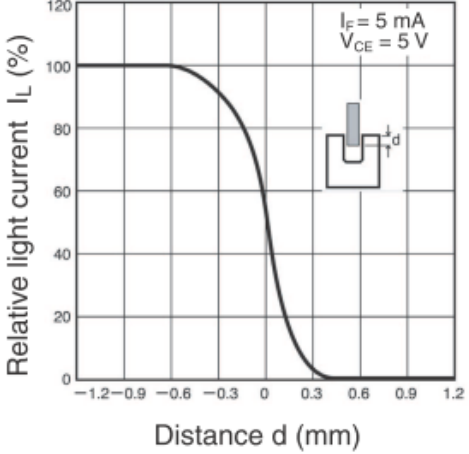
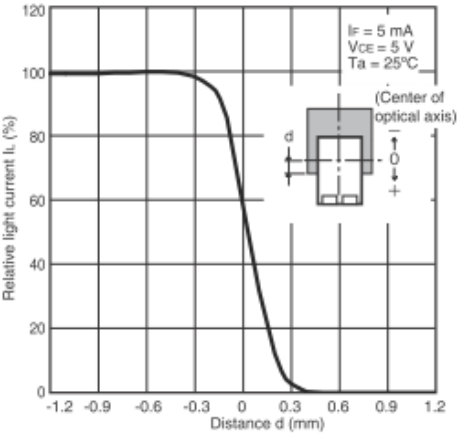


Cross section view B-B  
(Emitter side)



Cross section view A-A  
(Detector side)

Operation Ratings:

Discontinued Model EE-SX1108 (-1)	Suggested Replacement Model EE-SX1320
<p>Response Time vs. Load Resistance Characteristics(Typical)</p> 	<p>Response Time vs. Load Resistance Characteristics(Typical)</p> 
<p>Sensing Position Characteristics(Typical)</p> 	<p>Sensing Position Characteristics(Typical)</p> 
<p>Sensing Position Characteristics(Typical)</p> 	<p>Sensing Position Characteristics(Typical)</p> 

**Characteristics:**

Item	Discontinued Model EE-SX1108 (-1)	Suggested Replacement Model EE-SX1320
Collector–Emitter voltage	Maximum Ratings 20V	Maximum Ratings 12V
Forward current	Maximum Ratings 25mA	
Light current	50μA~500μA (Condition: IF=5mA, VCE=5V)	150μA~1500μA (Condition: IF=5mA, VCE=5V)
Dark current	Max 100nA (Condition: VCE=10V, 0Ix)	
Collector–Emitter saturated voltage	Typ :0.1V Max. :0.4V (Condition: IF=20mA, IL=50μA)	
Rising time/Falling time	Rising time : Typ. : 10μs Falling time : Typ.: 10μs (Condition: VCC=5V, RL=1KΩ, IL=100μA)	Rising time: Typ. : 19μs Falling time: Typ.: 26μs (Condition: VCC=5V, RL=100Ω, IL=500μA)

**Packing Quantity:**

Discontinued Model EE-SX1108	Suggested Replacement Model EE-SX1320
2,000 pcs / reel	
Discontinued Model EE-SX1108-1	Suggested Replacement Model EE-SX1320
100 pcs / bag	None

**Details of Applicable Models:**

EE-SX Discontinued Model	EE-SX Suggested Replacement Model
EE-SX1108	EE-SX1320
EE-SX1108-1	EE-SX1320

\* Sales teams should communicate this discontinuation with their OEM's and CEM's.  
For further technical support and any questions, please communicate with Product Marketing.

Specifications in this product news are as of the issue date and are subject to change without notice.  
Only main changes in specifications are described in this document. Please be sure to read the relevant catalogs, datasheets, product specifications, instructions, and manuals for precautions and necessary information when using products.

Last time buy dates are subject to change based on availability