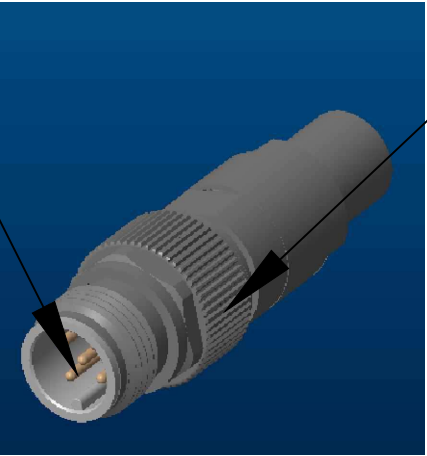
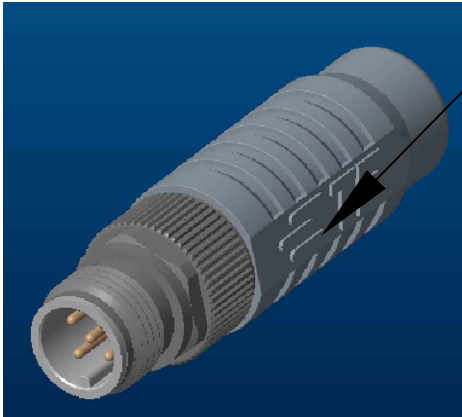
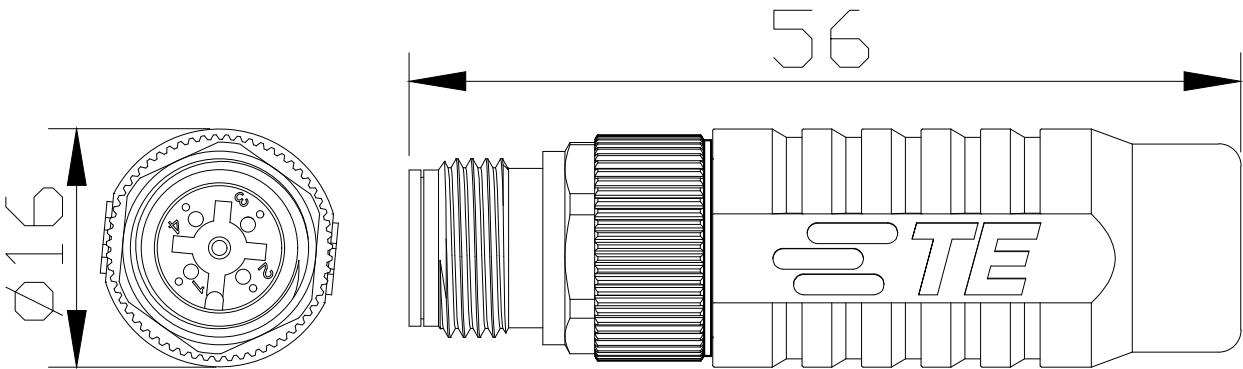


REVISIONS					
P	LTR	DESCRIPTION	DATE	DWN	APVD
	A3	ECR-17-018250	21SEP2017	GK	ES

PROJECT	PRJ-14-000004825
PART NO	X-2823449-X
HV DESC	M12, A-CODED,RAIL MALE CRIMP
CUSTOMER	GENERAL MARKET

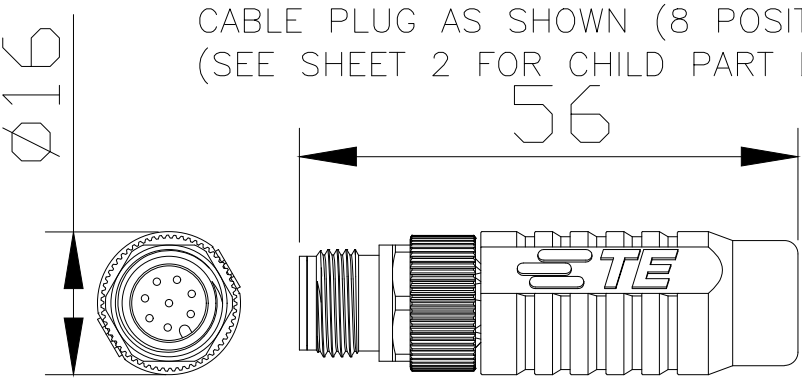
CABLE PLUG AS SHOWN (5 POSITION)
(SEE SHEET 2 FOR CHILD PART DETAILS)



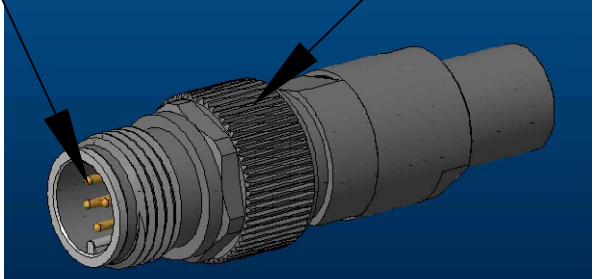
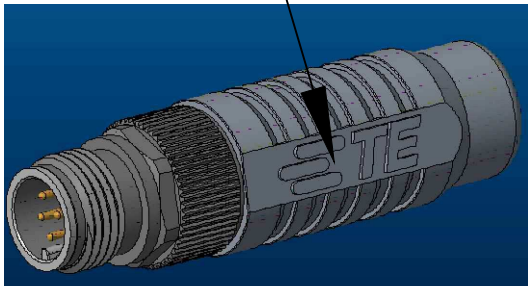
CODE	TE FG PN'S	NUMBER OF POLES IN CONNECTOR	NUMBER OF CONTACTS REQUIRED	CABLE PLUG	CABLE REFERENCE	AWG	RECOMMENDED POSITIONER (TE PN) (COMPACT) HAND TOOL TE PN : 601966-1	RECOMMENDED POSITIONER (TE PN) (STANDARD) HAND TOOL TE PN : 601967-1	CRIMP INSERT TE PN'S	CABLE COLOUR	NUMBER OF WIRES PER CABLE	CABLE MANUFACTURER	CABLE PN
A code	1-2823449-1	5	4	x	Cat 5 Radox 6.6mm	AWG22	TE : 601966-2, SETTINGS: (SEL No. 6)	TE : 1-2823582-4 SETTINGS: (AWG22)	1-2823558-3	BLACK	4	H & S	12584038
A code	1-2823449-2	5	4	x	Cat 5 Radox 7.3mm	AWG22			1-2823558-4				12568935
A code	1-2823449-3	5	4	x	Cat 5 Radox 8.3mm	AWG20	TE : 601966-2, SETTINGS: (SEL No. 7)	TE : 1-2823582-4 SETTINGS: (AWG20)	1-2823558-6				12585489
A code	1-2823449-4	8	4	x	Cat 5 Radox 7.3mm	AWG22			1-2823558-4				12568935
A code	1-2823449-5	8	4	x	Cat 5 Radox 6.6mm	AWG22	TE : 1-2823582-8, SETTINGS: (SEL No. 5)	TE : 1-2823582-6, SETTINGS:(AWG22)	1-2823558-3				12584038
A code	1-2823449-6	8	8	X	TE CAT 7	AWG24		TE : 1-2823582-6, SETTINGS: (AWG24)	1-2823558-5	BLUE	8	TE	2297799-1
A code	1-2823449-7	5	4	X	TE CAT 7	AWG24	TE : 601966-2, SETTINGS: (SEL No. 5)	TE : 1-2823582-4 SETTINGS: (AWG24)	1-2823558-5				2297799-1
A code	1-2823449-8	5	4	X	TE CAT 5E	AWG22	TE : 601966-2, SETTINGS: (SEL No. 6)	TE : 1-2823582-4 SETTINGS: (AWG22)	1-2823558-3		4		2320808-1


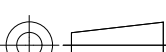
NOTES:

- MATERIAL:
- ITEM NO. 1: HOUSING – BRASS, NICKEL PLATED.
 - ITEM NO. 2: PLASTIC BODY – PA (UL94 V-0).
 - ITEM NO. 3: CONTACT FINISH – Au (gold).
 - CONTACT – CuZn (Brass).
- ALL DIMENSIONS ARE FOR NOMINAL REFERENCE ONLY.
 - PACKAGING: 1 PIECE IN A BAG.
 - THE CONNECTOR IS AS PER IEC 61076-2-101.
 - TEMPERATURE RANGE: -40°C TO 85°C (WITH CABLE BOOT),
-30°C TO 85°C (WITHOUT CABLE BOOT).
 - VIBRATION & SHOCK TEST CONDUCTED AS PER IEC 61373:1999.
 - FIRE PERFORMANCE CONDUCTED AS PER EN45545-2, NFF16-101 AND NFF16-102.
 - THE THREAD OF THE MATING INTERLACE WITH THE COUNTERPART IS M12x1 ACCORDING TO IEC61076-2-101.
 - REFER SPEC NO 408-156019 FOR INSTRUCTION SHEET (8 POSITION).
 - REFER SPEC NO 408-156022 FOR INSTRUCTION SHEET (5 POSITION).
 - CRIMP INSERT: SHOULD BE VALIDATED ON CABLE USED.
 - CUSTOMER SHOULD SELECT THE CONTACTS POSITIONS,BASED ON HIS REQUIREMENT.
 - WEIGHT: 24 g.



CABLE PLUG AS SHOWN (8 POSITION)
(SEE SHEET 2 FOR CHILD PART DETAILS)



THIS DRAWING IS A CONTROLLED DOCUMENT.		DWN GUNA	07DEC2015	 TE Connectivity			
		CHK GANI	07DEC2015				
DIMENSIONS: MM		APVD JAYANTH	07DEC2015	NAME			
		PRODUCT SPEC 108-156001	M12, A-CODED RAIL MALE, CRIMP CONNECTORS				
		APPLICATION SPEC 114-156002					
		WEIGHT	SIZE A3	CAGE CODE 00779	DRAWING NO C-2823449	RESTRICTED TO —	
MATERIAL —		FINISH —	CUSTOMER DRAWING				
			SCALE NTS	SHEET 1 OF 2	REV A3		

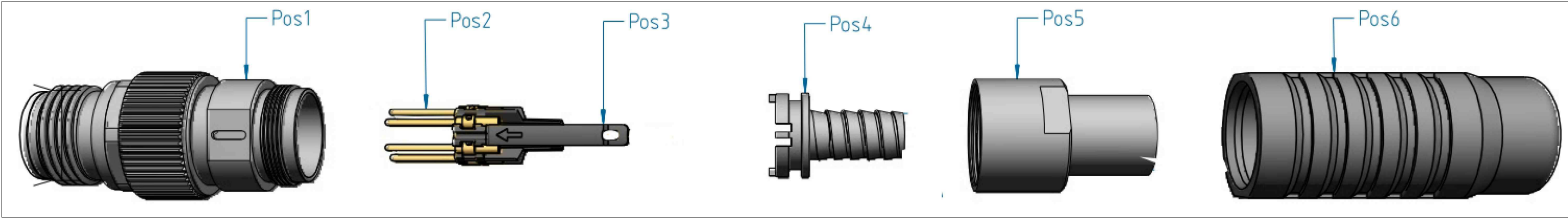
REVISIONS					
P	LTR	DESCRIPTION	DATE	DWN	APVD
	-	SEE SHEET 1	-	-	-

PROJECT	PRJ-14-000004825
PART NO	X-2823449-X
HV DESC	M12, A-CODED,RAIL MALE,CRIMP
CUSTOMER	GENERAL MARKET


TOOLING INFORMATION

Cable Stripping	Contact Crimp Tool	Contact Positioner	Crimp Tool Cable Jacket	Crimp insert Cable jacket Tool	Insertion tool Crimp insert (Handle)	Insert for Handle	Connector Assembly Tool
 <u>Cable Stripping</u> 1-2823559-1 stripping tool	 <u>Contact crimp tool</u> 601966-1 (Compact) 601967-1 (Standard) Recommended setting see table Positioner: see table		 <u>Cable Jacket Crimping</u> Crimp tool 1-2823557-1 Crimp insert X-2823558-X (see table in page 1)		 <u>Handle</u> 1-2823560-1 (Handle) 1-2823561-1 (Insert for handle)		 <u>Assembly Tool</u> 1-2823564-1

CABLE PLUG AS SHOWN (8 POSITION)



6	GRIP BOOT	1	PC
5	BACK NUT & CRIMP SLEEVE	1	PC
4	CRIMP INSERT	1	PC
3	CONTACT HOLDER	1	PC
2	CRIMP CONTACTS MACHINED	SEE TABLE	PC
1	FRONT HOUSING	1	PC
POSITION	DESCRIPTION	QTY	UNIT

THIS DRAWING IS A CONTROLLED DOCUMENT.		DWN GUNA 07DEC2015	 TE Connectivity		
		CHK GANI 07DEC2015			
		APVD JAYANTH 07DEC2015	NAME		
		PRODUCT SPEC	M12, A-CODED RAIL MALE, CRIMP CONNECTORS		
		APPLICATION SPEC			
		WEIGHT	SIZE A3	CAGE CODE 00779	DRAWING NO C-2823449
		CUSTOMER DRAWING	SCALE NTS	SHEET 2 OF 2	REV A3