

Customer Information Sheet

DRAWING No.: M20-106XX00

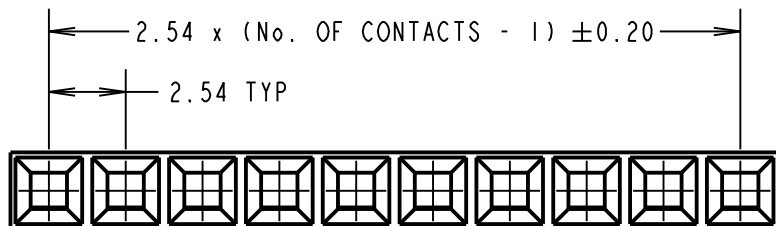
IF IN DOUBT - ASK

(C)

NOT TO SCALE

THIRD ANGLE PROJECTION

ALL DIMENSIONS IN mm



SPECIFICATIONS:

ELECTRICAL:

CURRENT RATING = 3A AC/DC

VOLTAGE RATING = 250V AC MAX

CONTACT RESISTANCE = 20mΩ MAX

INSULATION RESISTANCE = 5,000MΩ MIN

DIELECTRIC STRENGTH = 1,500V AC FOR 1 MINUTE

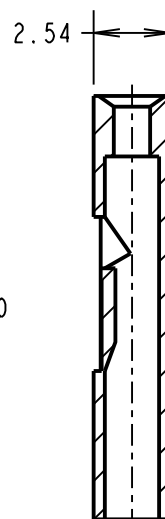
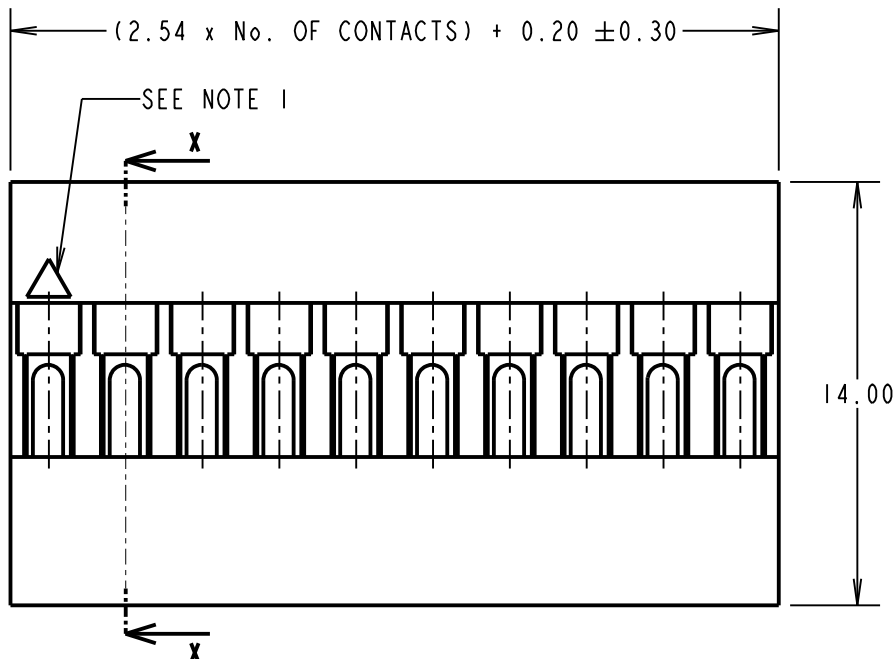
ENVIRONMENTAL:

TEMPERATURE RANGE = -40°C TO +105°C

ORDER CODE:

M20-106XX00

No. OF CONTACTS: 01 TO 12



SECTION X-X

NOTES:

1. CONTACT No. 1 IDENTIFICATION.
2. FOR USE WITH CRIMP CONTACTS:
M20-11600XX (RELLED CONTACTS),
M20-11800XX (LOOSE CONTACTS).
3. THE ABOVE SPECIFICATIONS APPLY WHEN THIS MOULDING IS USED WITH THE SPECIFIED CONTACTS.
4. FOR COMPLETE ELECTRICAL AND MECHANICAL SPECIFICATION, SEE COMPONENT SPECIFICATION C001XX (LATEST ISSUE).
5. MATING PIN LENGTH = 6.30mm MAX
5.50mm MIN

MSP	7	21.07.17	20286
NAME	ISS.	DATE	C/NOTE
APPROVED: M.PERREN			
CHECKED: M.PLESTED			
DRAWN: S.BENNETT			
CUSTOMER REF.:			
ASSEMBLY DRG:			

HARWIN

www.harwin.com
technical@harwin.com

THIS DRAWING AND ANY INFORMATION OR DESCRIPTIVE MATTER SET OUT HEREON ARE CONFIDENTIAL AND COPYRIGHT PROPERTY OF THE HARWIN GROUP AND MUST NOT BE DISCLOSED, LOANED, COPIED OR USED FOR MANUFACTURING, TENDERING OR FOR ANY OTHER PURPOSE WITHOUT THEIR WRITTEN PERMISSION.

TOLERANCES
X. = ±1mm
X.X = ±0.50mm
X.XX = ±0.10mm
X.XXX = ±0.01mm

ANGLES = ±5°
UNLESS STATED

MATERIAL:

PPE+PS
UL94V-1 BLACK

FINISH: CLEAN, FLASH-FREE

S/AREA: mm²

TITLE:

2.54mm PITCH SIL
CRIMP MOULDING

DRAWING NUMBER:

M20-106XX00

SHT
2 OF 2