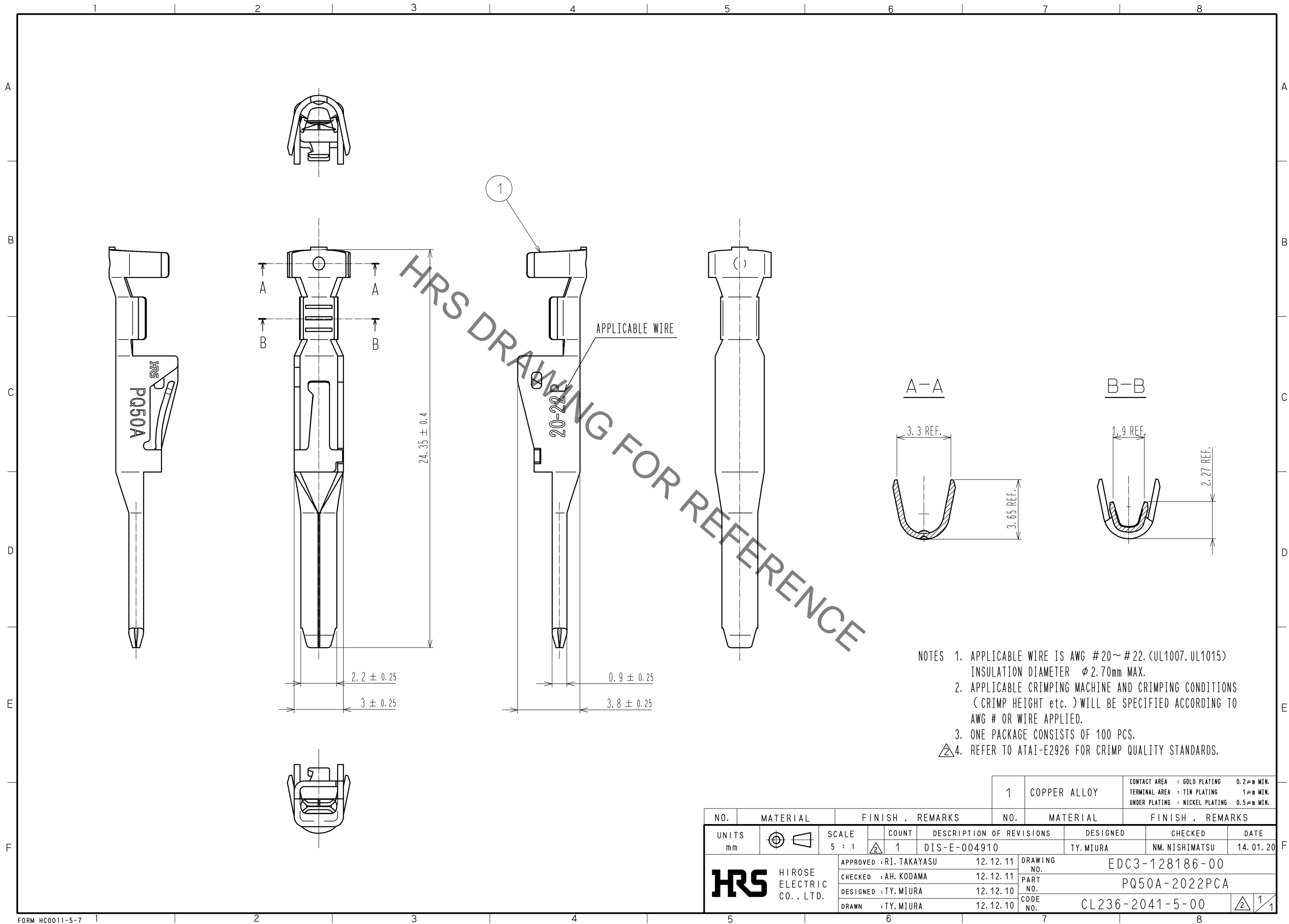
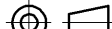





Jun.1.2020 Copyright 2020 HIROSE ELECTRIC CO., LTD. All Rights Reserved.
In case of consideration for using Automotive equipment / device which demand high reliability, kindly contact our sales window correspondents.



				1	COPPER ALLOY		CONTACT AREA : GOLD PLATING 0.2μm MIN. TERMINAL AREA : TIN PLATING 1μm MIN. UNDER PLATING : NICKEL PLATING 0.5μm MIN.				
NO.	MATERIAL		FINISH , REMARKS			NO.	MATERIAL		FINISH , REMARKS		
UNITS mm			SCALE 5 : 1		COUNT 1	DESCRIPTION OF REVISIONS DIS-E-004910		DESIGNED TY. MIURA	CHECKED NM. NISHIMATSU	DATE 14. 01. 20	
 HIROSE ELECTRIC CO. , LTD.				APPROVED : RI. TAKAYASU 12. 12. 11		DRAWING NO. EDC3-128186-00					
				CHECKED : AH. KODAMA 12. 12. 11		PART NO. PQ50A-2022PCA					
				DESIGNED : TY. MIURA 12. 12. 10		CODE NO. CL236-2041-5-00					
				DRAWN : TY. MIURA 12. 12. 10		 1					