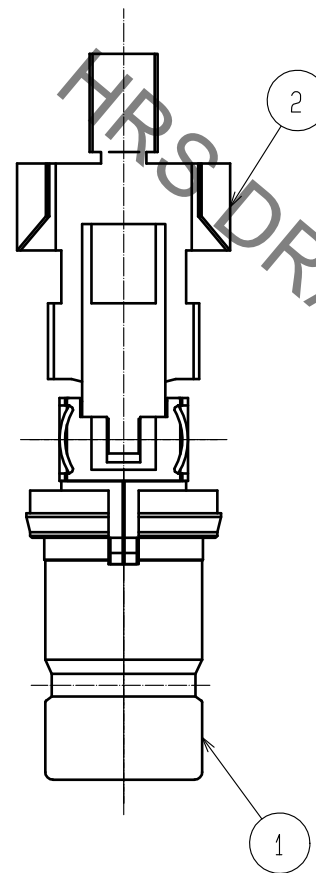
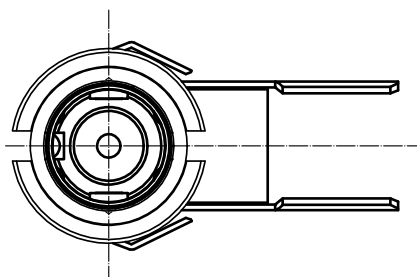
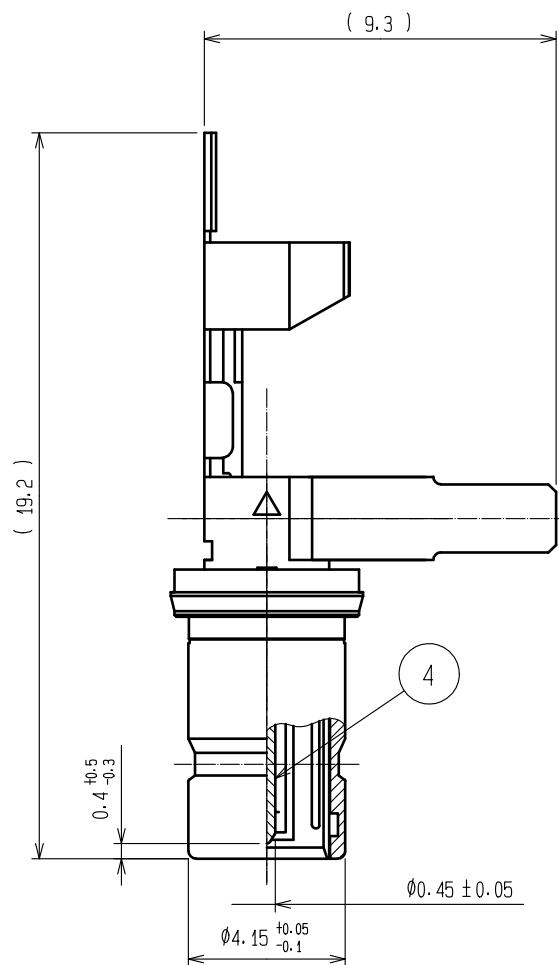
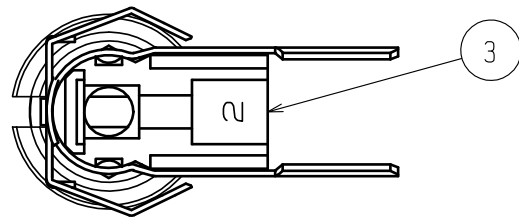
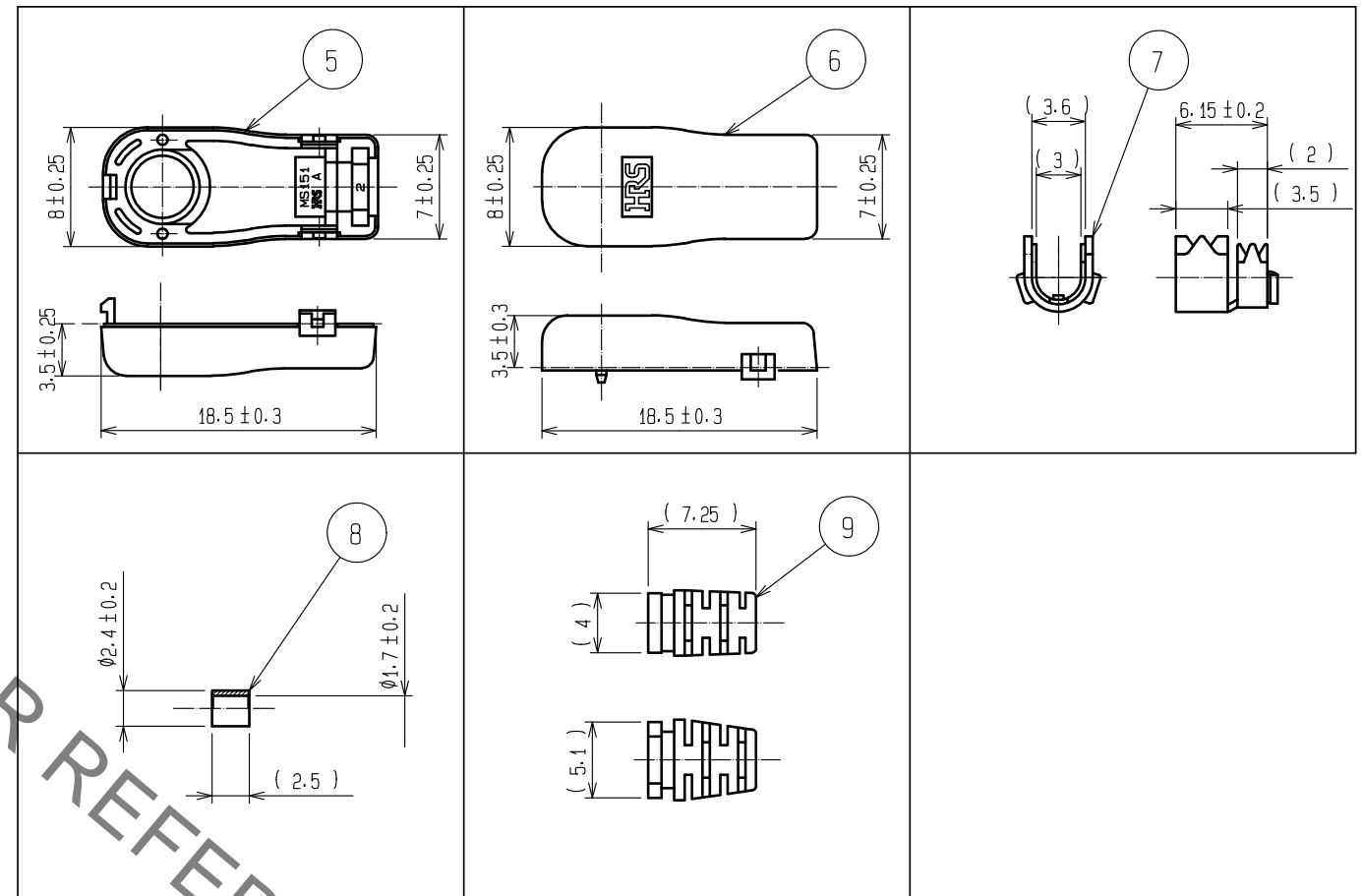


Jun.1.2020 Copyright 2020 HIROSE ELECTRIC CO., LTD. All Rights Reserved.
In case of consideration for using Automotive equipment / device which demand high reliability, kindly contact our sales window correspondents.

Redrawing



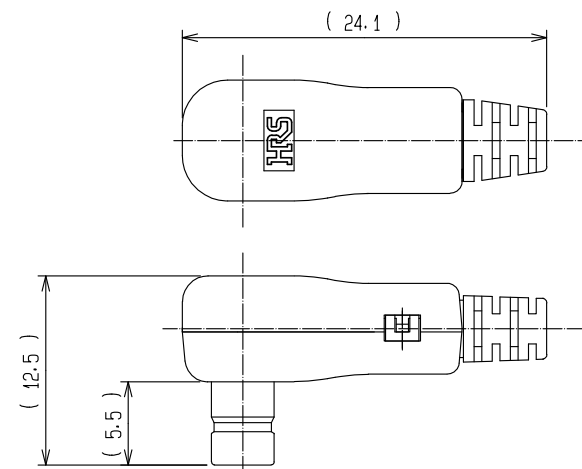
ATTACHED COMPONENTS (2:1)



Note 1. This connector shall be used by mating with MS-151(CL358-0158-7)
After cable assembled and installed into attached components.

2. For stable supply of this series, material supplier of piece part#5*#6
will be changed during 2019-2022.
Please note this change in advance.

FINISHED PRODUCT IMAGE (2:1)



4	PHOSPHOR BRONZE	GOLD PLATED	9	POLYESTER	
3	POLYAMIDE		8	STAINLESS STEEL	NICKEL PLATED
2	PHOSPHOR BRONZE	NICKEL PLATED	7	BRASS	
1	STAINLESS STEEL	NICKEL PLATED	6	PC	
			5	PC	
NO.	MATERIAL	FINISH . REMARKS	NO.	MATERIAL	FINISH . REMARKS
UNITS mm		SCALE 5 : 1	COUNT 2	DESCRIPTION OF REVISIONS DIS-D-00004079	DESIGNED MK. INOUE
APPROVED : KJ. KAWAMURA 20050105				DRAWING NO. EDC-180190-00-00	
CHECKED : RZ. KANO 20050105				PART NO. MS-151-C(LP)	
DESIGNED : KH. HIDA 20050105				CODE NO. CL358-0160-9-00	
DRAWN : KH. HIDA 20050105				1/1	