

4

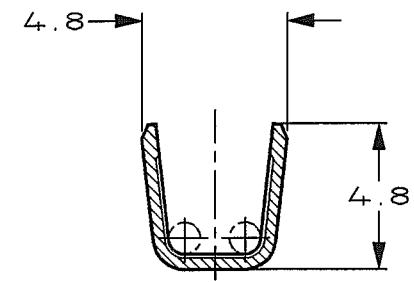
3

2

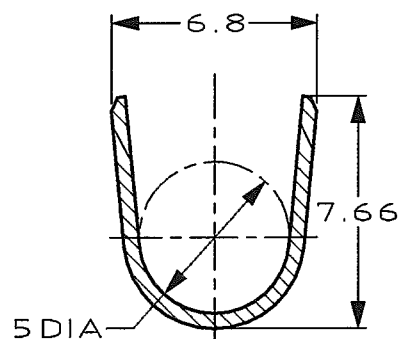
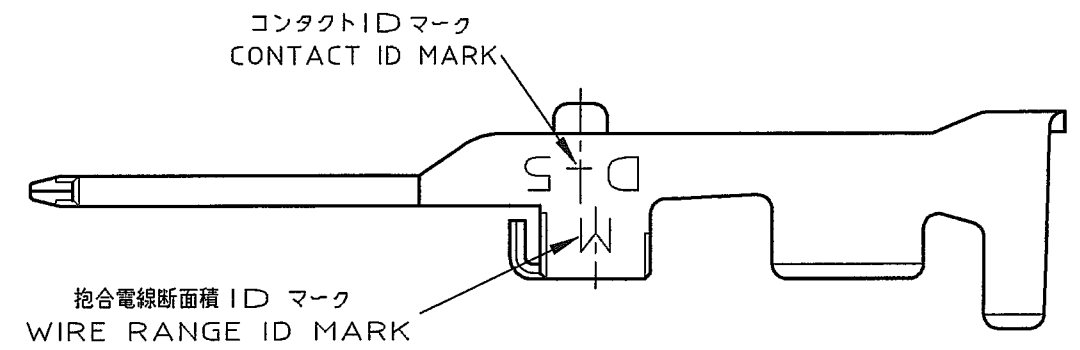
1

THIS DRAWING IS UNPUBLISHED.  
RELEASED FOR PUBLICATION  
1997  
COPYRIGHT 1995 BY AMP INCORPORATED,ALL RIGHTS RESERVED.

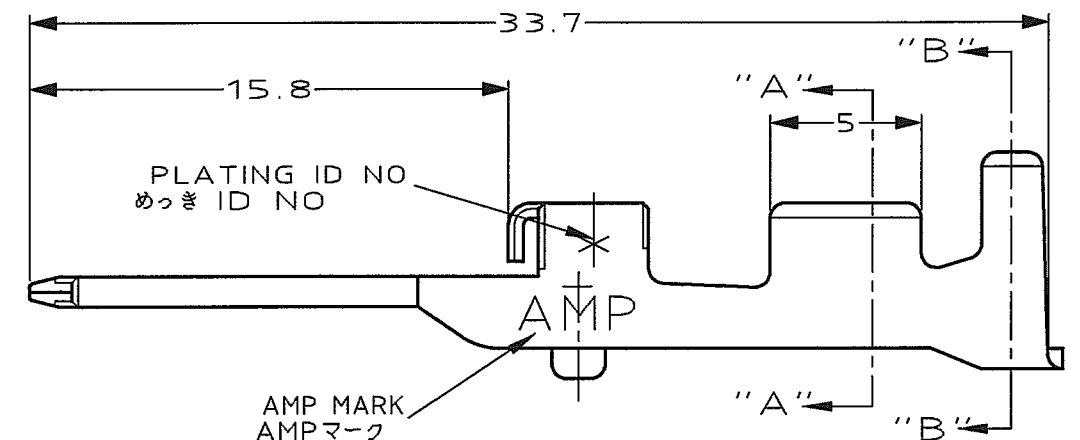
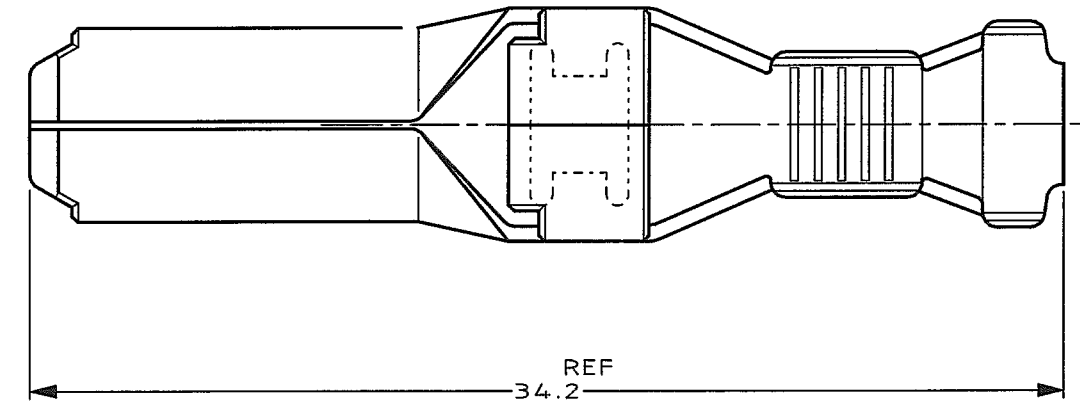
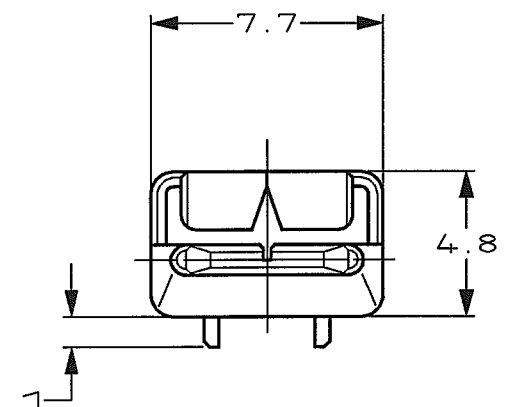
LOC	DIST	REVISIONS					
		P	LTR	DESCRIPTION	ECN	DATE	APVD
J			0	RELEASED	FJ00-0992-97	27/JUN 97	K.I.H
			A	REVISED	FJ00-2467-02	10 DEC 02	T.S.S.M



断面 "A"- "A"  
SECT "A"- "A"



断面 "B"- "B"  
SECT "B"- "B"



注記

- ① めっき: コントクト: 全面Ni下地  
接触部: 0.38μm MIN金めっき
- ② めっき: コントクト: 全面Ni下地  
接触部: 0.76μm MIN金めっき
- ③ めっき: コントクト: 全面Ni下地  
全面: 2.54μm MIN銀めっき

NOTES

- ① FINISH(CONTACT AREA):0.38μmMIN GOLD PLATING OVER NI PLATING
- ② FINISH(CONTACT AREA):0.76μmMIN GOLD PLATING OVER NI PLATING
- ③ FINISH(CONTACT AREA):2.54μmMIN SILVER PLATING OVER NI PLATING

6	③	917805-6
3	②	917805-3
2	①	917805-2
めっき ID NO PL ID CODE	仕上 FINISH	バラ状 L/P (P/N)型番

WIRE RANGE 3.08/5.5sq AWG #12/#10		INSULATION DIA 4/5.2 mm φ	
DWN 26/JUN/'97 CHK K.IKEDA 27/JUN/'97 N.MATSUBARA APVD 27/JUN/'97 I.HASEGAWA		Tyco Electronics AMP K.K. Kawasaki, Japan	
PRODUCT SPEC 108-5453		NAME TAB CONTACT "M" SIZE タブコンタクト "M" サイズ <DYNAMIC D-5000 SERIES>	
APPLICATION SPEC 114-5206		SIZE A3	CAGE CODE 00779
WEIGHT 1.85g		DRAWING NO 917805	REV A
CUSTOMER DRAWING		SCALE 4-1	SHEET 1 OF 1

THIS DRAWING IS A CONTROLLED DOCUMENT FOR AMP INCORPORATED IT IS SUBJECT TO CHANGE AND THE CONTROLLING ENGINEERING ORGANIZATION SHOULD BE CONTACTED FOR THE LATEST REVISION.	
DIMENSIONS: 単位 特 mm	TOLERANCES UNLESS OTHERWISE SPECIFIED 一般公差 1% : ±0.3 3% : >10 : ±0.35 10% : >30 : ±0.4 ANGLE : ±3°
MATERIAL 銅合金 (COPPER ALLOY)	FINISH SEE TABLE 表参照