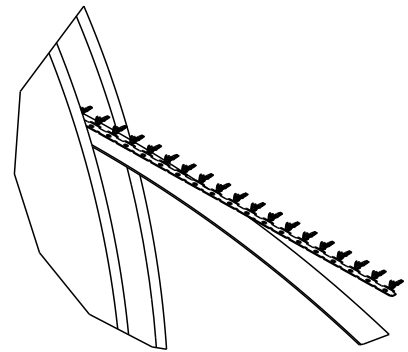
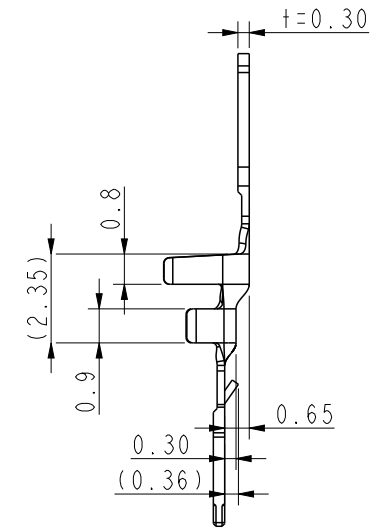
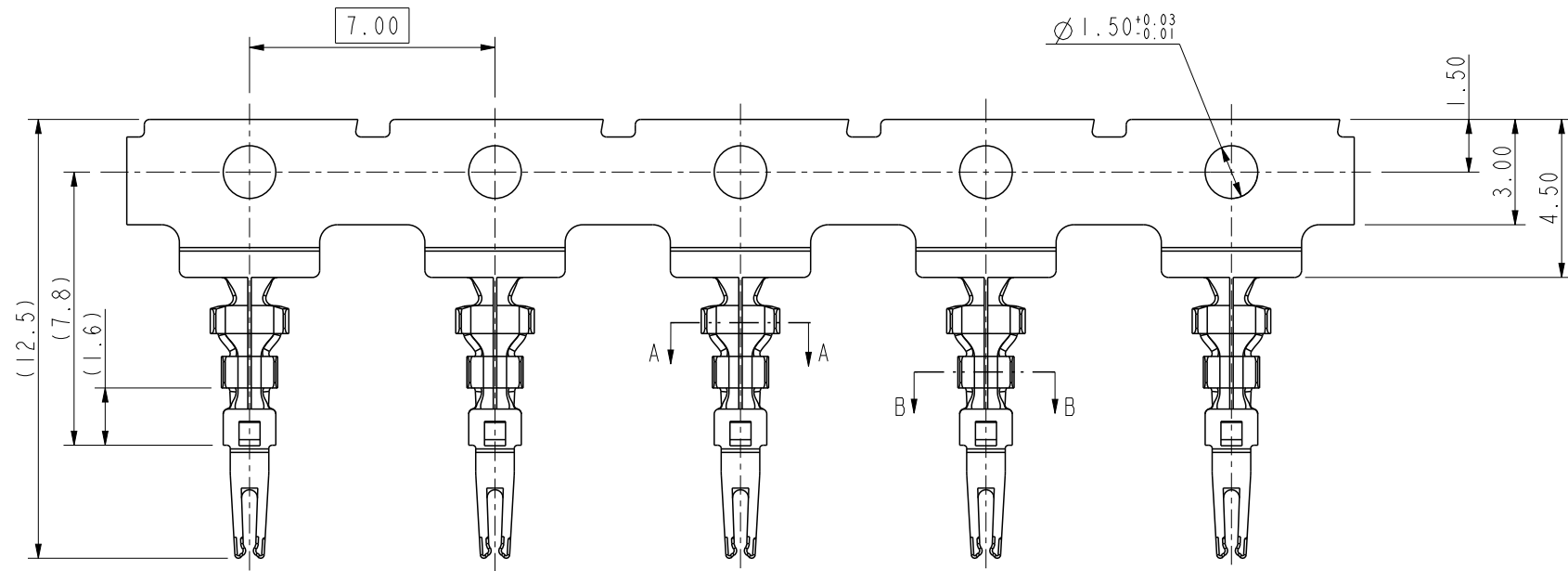
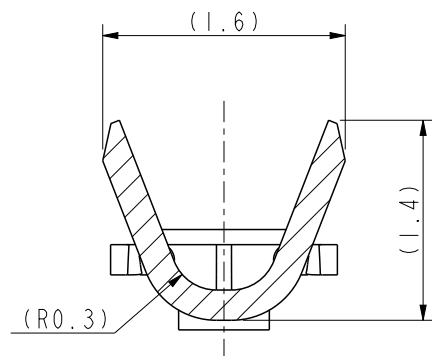


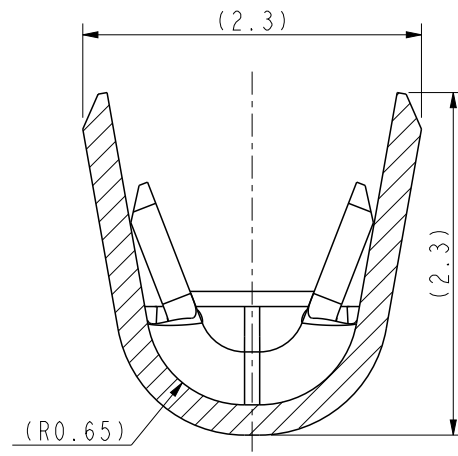
PART NO.
10150537-00XLF



DETAIL C
SCALE 2:1

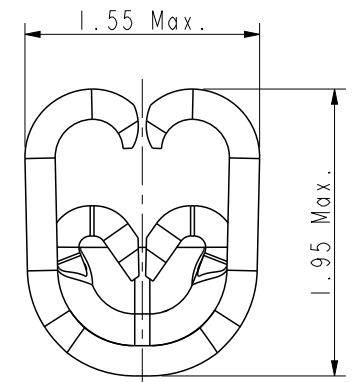
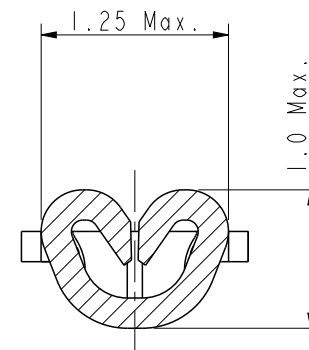


SECTION B-B
SCALE 20:1



SECTION A-A
SCALE 20:1

AFTER CRIMPING DIMENSIONS ONLY FOR REFERENCE



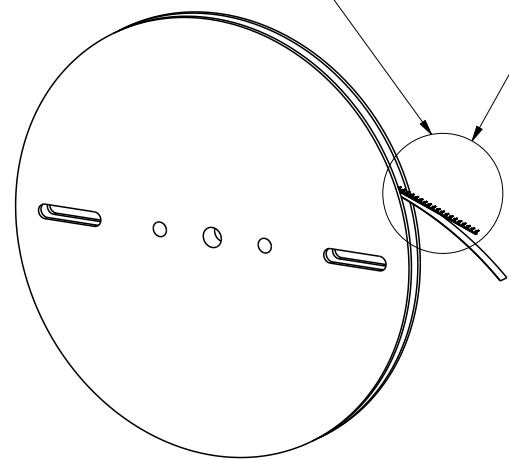
NOTE:

1. MATERIAL: COPPER ALLOY, T=0.3mm.
2. THE BURR IS 0.05mm MAX.
3. MAX ALLOWABLE CAMBER OF STRIP IS 4mm/1000mm. AND TWIST OF STRIP IS 90°/4000mm.
4. PACKAGE SPEC: GS-14-2702
5. PART NUMBER CODE:
10150537-00XLF

PLATING SPEC:
1: 30u" MIN. Au OR 30GXT.
2: 110U" MIN. MATTE TIN ALL OVER.

Pull-out the direction

SEE DETAIL C



SCALE 1:10

spec ref	-	dr	Nick Zhang	2019/10/22	projection	mm	size	A3	scale	5:1
tolerance std	ISO 406 ISO 1101	eng	Nick Zhang	2019/11/01	chr	-	ecn no	-	rel level	Released
surface	ISO 1302	appr	Tim Yao	2019/11/01	product family	-	rel level	Released	dwg no	10150537C
linear	0.X ±0.3 0.XX ±0.15 0.XXX ±0.05	Amphenol FCi	title	Terminal, Cross-Mate™ Series Cable Conn. WTB 2.0 PITCH CABLE CONN.	cat. no.	-	Product - Customer Drw	sheet 1 of 1	rev	A
angular	0° ±2°									