

RJ45 Connectors, Modular Couplers and Ethernet Cable Assembly

multicompPRO

**RoHS
Compliant**

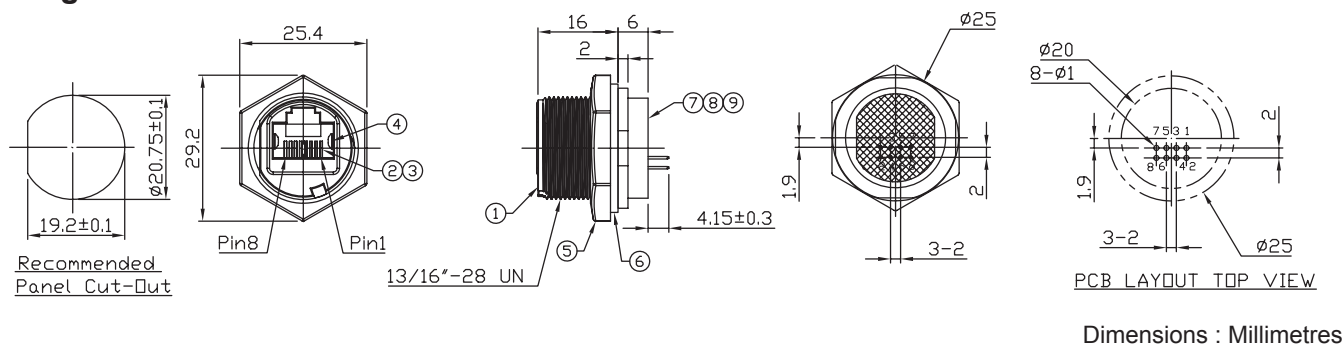
MP002453 RJ45 Plastic C3 Panel Jack Dip 180° Screw



Specifications

IP Rating	: IP67
Recommend Panel Thickness	: 0.8mm to 4mm
Recommend Torque	: 14 to 15Kgf-cm

Diagram



No.	Part Name	Material/Finish	Qty.
1	Housing	Thermoplastic; Colour: Black	1
2	RJ45 Receptacle	Housing: Thermoplastic; Colour: Grey	
3		Contacts: Copper Alloy, Finish: Au Plated	
4	Holder	Thermoplastic; Colour: Black	2
5	EMI Shielded Plate	Copper Alloy; Finish: Ni Plated	
6	Hex Nut	Thermoplastic; Colour: Black	1
7	Gasket	Silicone; Colour: Black	
8	PCB	FR-4	2
9	Pin Header	Housing: Thermoplastic; Colour: Black	1
		Contacts: Copper Alloy, Finish: Au Plated	
	Glue	Epoxy; Colour: Black	-

RJ45 Connectors, Modular Couplers and Ethernet Cable Assembly

multicompPRO

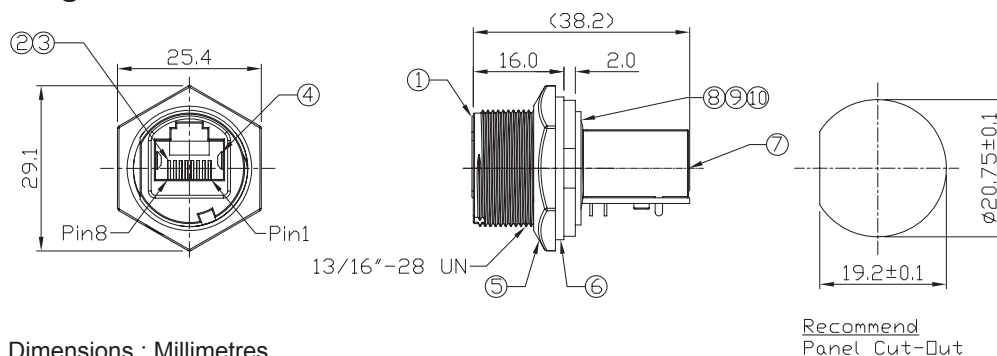
MP002454 RJ45 Plastic C3 Shielded Panel Jack Screw Coupler



Specifications

IP Rating	: IP67
Recommend Panel Thickness	: 0.8mm to 4mm
Recommend Torque	: 14 to 15Kgf-cm

Diagram



Dimensions : Millimetres

No.	Part Name	Material/Finish	Qty.
1	Housing	Thermoplastic; Colour: Black	1
2	RJ45 Receptacle	Housing: Thermoplastic; Colour: Grey	
		Contacts: Copper Alloy, Finish: Au Plated	
3	Holder	Thermoplastic; Colour: Black	1
4	EMI Shielded Plate	Copper Alloy; Finish: Ni Plated	
5	Hex Nut	Thermoplastic; Colour: Black	
6	Gasket	Silicone; Colour: Black	
7	RJ45 Receptacle	Housing: Thermoplastic; Colour: Black	
		Contacts: Copper Alloy, Finish: Au Plated	
		Shell: Copper Alloy; Finish: Ni Plated	
8	Holder	Thermoplastic; Colour: Black	
9	PCB	FR-4	
10	Glue	Epoxy; Colour: Black	-

RJ45 Connectors, Modular Couplers and Ethernet Cable Assembly

multicompPRO

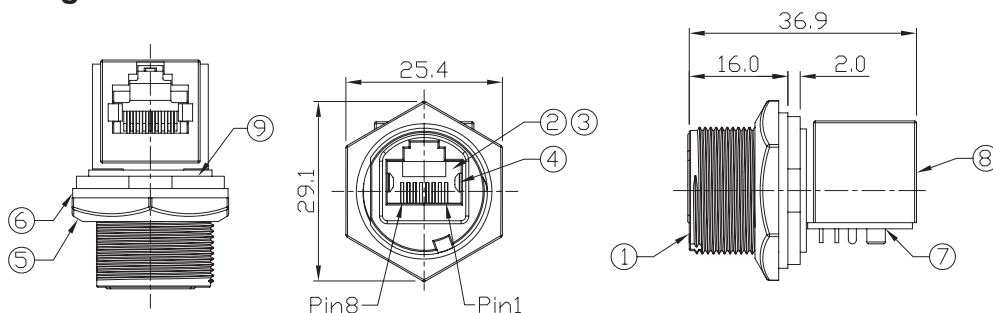
MP002455 RJ45 Plastic C3 Shielded Panel Mount Screw with Receptacle Coupler 90 Deg.



Specifications

IP Rating	: IP67
Recommend Panel Thickness	: 0.8mm to 4mm
Recommend Torque	: 6 to 7Kgf-cm

Diagram



Dimensions : Millimetres

No.	Part Name	Material/Finish	Qty.
1	Housing	Thermoplastic; Colour: Black	1
2	RJ45 Receptacle	Housing: Thermoplastic; Colour: Grey	
3		Contacts: Copper Alloy, Finish: Au Plated	
4	Holder	Thermoplastic; Colour: Black	2
5	EMI Shielded Plate	Copper Alloy; Finish: Ni Plated	
6	Hex Nut	Thermoplastic; Colour: Black	
7	Gasket	Silicone; Colour: Black	1
8	PCB	FR-4	
9			
8	RJ45 Receptacle	Housing: Thermal plastic; Colour: Black	1
		Contacts: Copper Alloy, Finish: Au Plated	
		Shell: Copper Alloy; Finish: Ni Plated	
9	Glue	Epoxy; Colour: Black	-

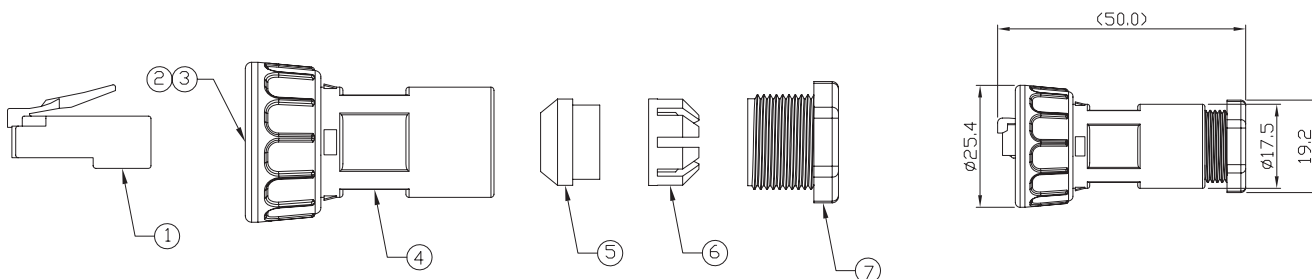
MP002456 RJ45 Plastic C3 Shielded E1 Field Install able cable end Plug Screw



Specifications

IP Rating	: IP67
Cable Diameter	: 5mm to 6mm
Recommend Gland Nut Torque	: 9 to 10Kgf-cm

Diagram



Dimensions : Millimetres

No.	Part Name	Material/Finish	Qty.
1	RJ45 Plug	Housing: Thermoplastic; Colour: Clean	1
		Contacts: Copper Alloy, Finish: Au Plated	
		Shell: Copper Alloy; Finish: Ni Plated	
2	Rubber Pad	Silicone; Colour: Black	
3	Screw Nut	Thermoplastic; Colour: Black	
4	Housing	Thermoplastic; Colour: Black	
5	Gland	Silicone; Colour: Green	
6	Cage	Thermoplastic; Colour: White	
7	Gland Nut	Thermoplastic; Colour: Black	

RJ45 Connectors, Modular Couplers and Ethernet Cable Assembly

multicompPRO

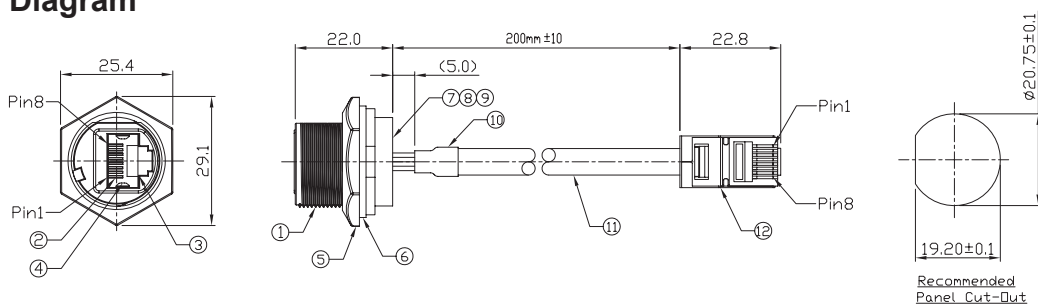
MP002452 RJ45 Plastic C3 Shielded Panel Jack Screw with Cable + RJ Plug



Specifications

IP Rating	: IP67
Recommend Panel Thickness	: 0.8mm to 6mm
Recommend Torque	: 19 to 20Kgf-cm

Diagram



Dimensions : Millimetres

No.	Part Name	Material/Finish	Qty.
1	Housing	Thermoplastic; Colour: Black	1
2	RJ45 Receptacle	Housing: Thermoplastic; Colour: Grey	
3		Contacts: Copper Alloy; Finish: Au Plated	
4	Holder	Thermoplastic; Colour: Black	2
5	EMI Shielded Plate	Copper Alloy; Finish: Ni Plated	
6	Hex Nut	Thermoplastic; Colour: Black	1
7	Gasket	Silicone; Colour: Black	
8	PCB	FR-4	2
9	Pin Header	Housing: Thermoplastic; Colour: Black	
10		Contacts: Copper Alloy; Finish: Au Plated	1
11	Glue	Epoxy; Colour: Black	
12	Shrink Tube	L=20mm; Colour: Black	
13	Cable	CAT5E 24AWG×4P+AL/MY+D; Colour: Grey, OD=6mm	1
14	RJ45 Plug	Shell: Cold Roll Steel, Finish: Ni Plated	
15		Contacts: Copper Alloy, Finish: Au Plated	
16		Housing: Thermoplastic, Colour: Clean	

RJ45 Connectors, Modular Couplers and Ethernet Cable Assembly

multicompPRO



Part Number Table

Description	Part Number
RJ45 Shielded Ethernet Cable Assembly, RJ45 Plug to RJ45 Receptacle C3 Panel, Grey, 200mm, IP67	MP002452
RJ45 Shielded Receptacle Connector, 8P8C, C3 Panel Mount, IP67	MP002453
RJ45 Shielded Modular Coupler, Straight, C3 Panel Mount, IP67	MP002454
RJ45 Shielded Modular Coupler, Right Angle, C3 Panel Mount, IP67	MP002455
RJ45 Shielded Plug Connector, 8P8C, C3 Panel Mount, IP67	MP002456

Important Notice : This data sheet and its contents (the "Information") belong to the members of the AVNET group of companies (the "Group") or are licensed to it. No licence is granted for the use of it other than for information purposes in connection with the products to which it relates. No licence of any intellectual property rights is granted. The Information is subject to change without notice and replaces all data sheets previously supplied. The Information supplied is believed to be accurate but the Group assumes no responsibility for its accuracy or completeness, any error in or omission from it or for any use made of it. Users of this data sheet should check for themselves the Information and the suitability of the products for their purpose and not make any assumptions based on information included or omitted. Liability for loss or damage resulting from any reliance on the Information or use of it (including liability resulting from negligence or where the Group was aware of the possibility of such loss or damage arising) is excluded. This will not operate to limit or restrict the Group's liability for death or personal injury resulting from its negligence. Multicomp Pro is the registered trademark of Premier Farnell Limited 2019.

Newark.com/multicomp-pro
Farnell.com/multicomp-pro
Element14.com/multicomp-pro

multicompPRO