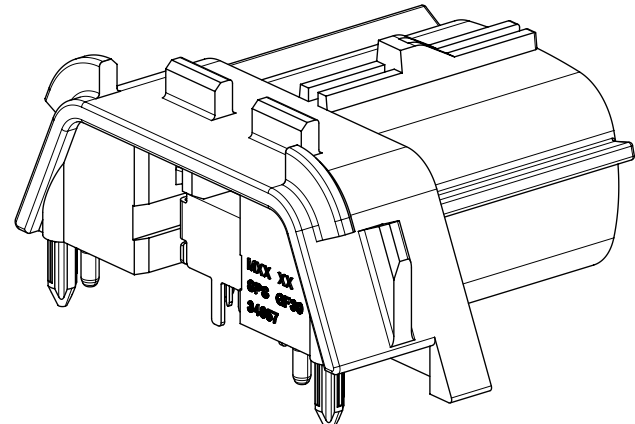
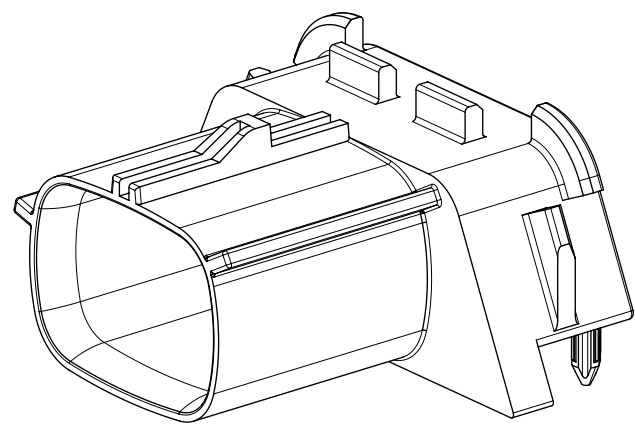


			34857-0506 12 CKT SEALED HEADER ASSY - KEY A	34857-0606 12 CKT SEALED HEADER ASSY - KEY B	34857-0706 12 CKT SEALED HEADER ASSY - KEY C	34857-0806 12 CKT SEALED HEADER ASSY - KEY D	34857-0516 12 CKT SEALED HEADER ASSY - KEY A (SHORT TAIL)	34857-0616 12 CKT SEALED HEADER ASSY - KEY B (SHORT TAIL)	34857-0716 12 CKT SEALED HEADER ASSY - KEY C (SHORT TAIL)	34857-0816 12 CKT SEALED HEADER ASSY - KEY D (SHORT TAIL)
ITEM	DESCRIPTION	COLOR	QTY	QTY	QTY	QTY	QTY	QTY	QTY	QTY
1	12 CKT SEALED R/A HEADER HOUSING, KEY A	BLACK	1				1			
2	12 CKT SEALED R/A HEADER HOUSING, KEY B	GRAY		1				1		
3	12 CKT SEALED R/A HEADER HOUSING, KEY C	BROWN			1				1	
4	12 CKT SEALED R/A HEADER HOUSING, KEY D	GREEN				1				1
5	12 CKT R/A TERMINAL CORE	N/A	1	1	1	1				
6	12 CKT R/A TERMINAL CORE - SHORT TAIL	N/A					1	1	1	1

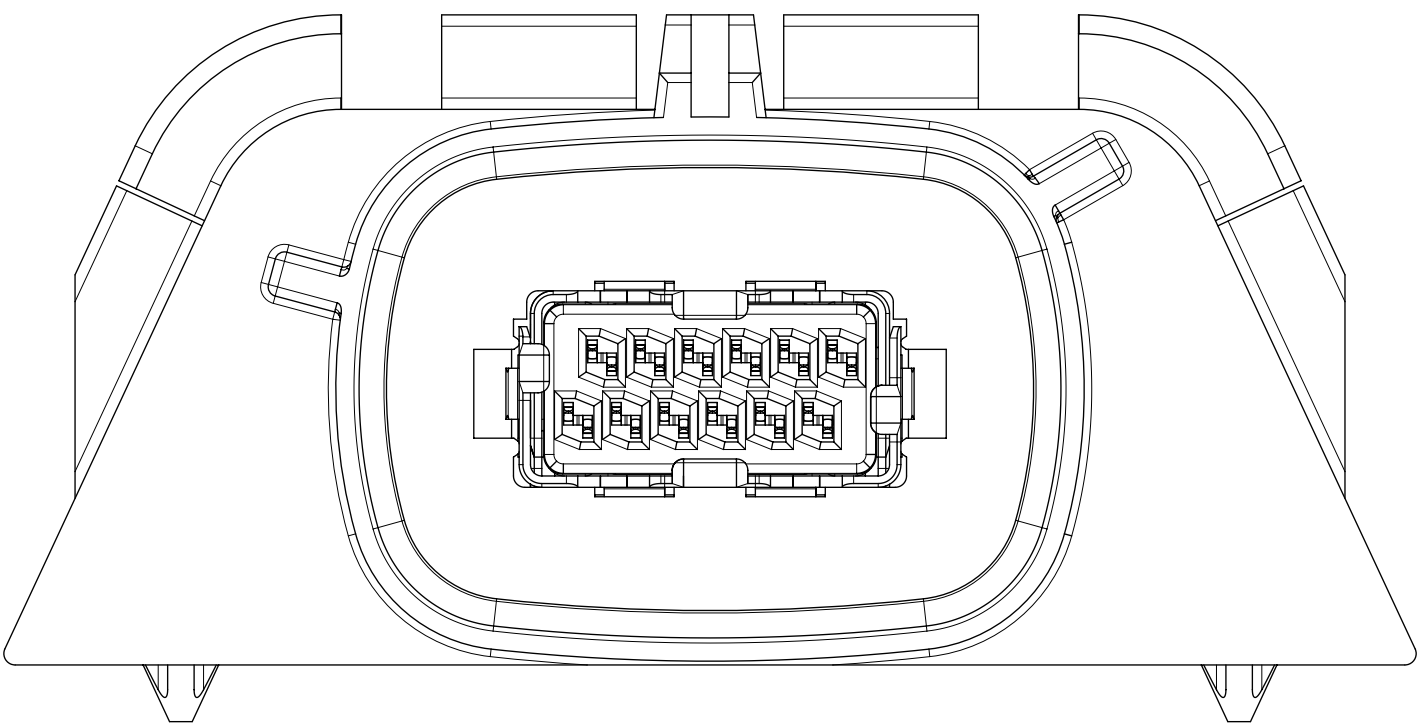


NOTES: VALID UNLESS OTHERWISE SPECIFIED

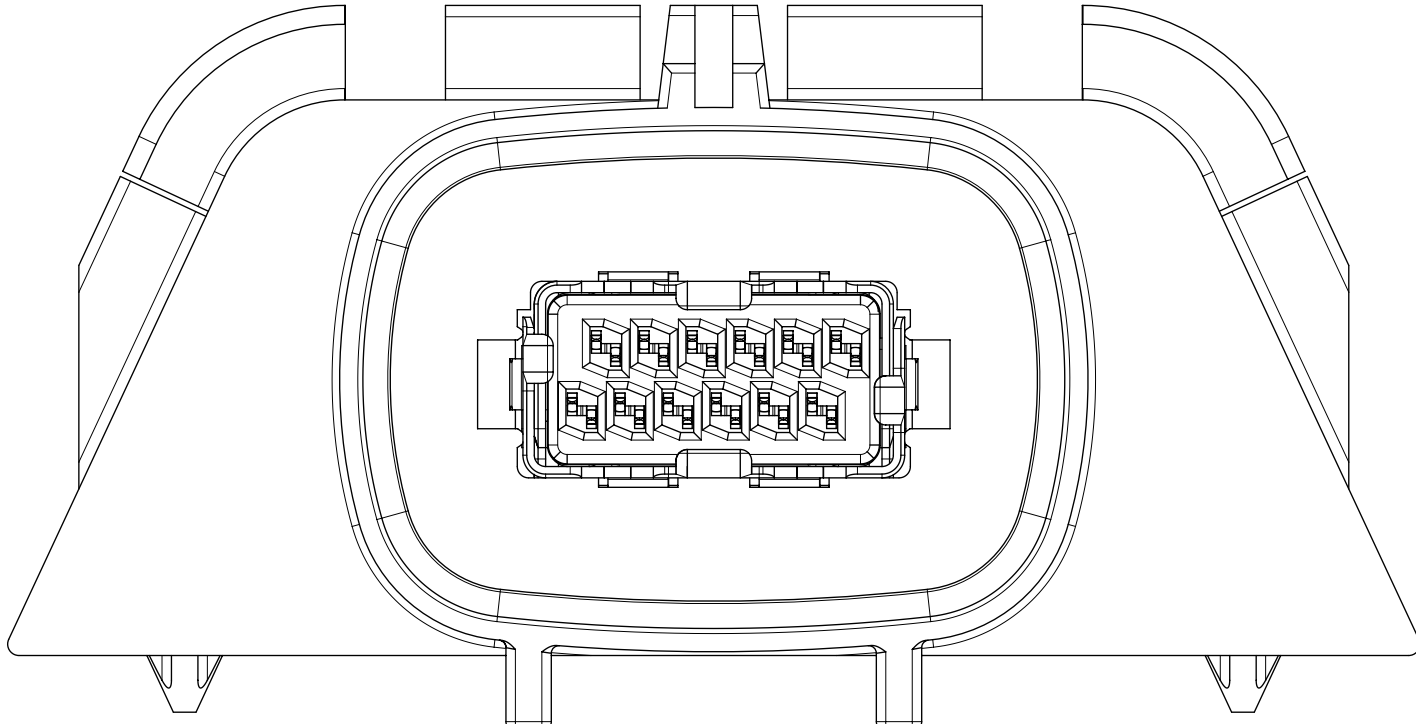
1. GENERAL:
- a. APPLICATION SPECIFICATION: AS-111149-002
 - b. PRODUCT SPECIFICATION: PS-111149-001
 - c. PACKAGING SPECIFICATION PER MOLEX DRAWING: PK-31301-768
 - d. PARTS MUST BE IN COMPLIANCE TO THE CURRENT VERSION OF THE MOLEX CHEMICAL SUBSTANCES FOR PRODUCTS AND PACKAGING SPECIFICATION
 - e. DATA MUST BE SUBMITTED UNDER THE MOLEX PART NUMBER TO IMDS (COMPANY ID#13255)
 - f. PCB TO BE FR4 0.062" (1.57mm) THICK
 - g. MATING CONNECTOR MINIMUM CLEARANCE: AREA TO REMAIN CLEAR OF MODULE COMPONENTS, ADHESIVE, DEBRIS, ETC.
 - h. APPLICABLE SEALANT TO BE USED: LOCTITE 5910
 - i. PCB MOUNTING BOSSES DESIGNED TO BE USED WITH THE FOLLOWING:
#4-20 x .375" TRI-LOBULAR THREAD FORMING SCREW
RECOMMENDED ASSEMBLY TORQUE: 1.1Nm +/- 0.11Nm

2. DESIGN - MATERIALS:
- a. HEADER HOUSING: SPS GF30
 - b. TERMINALS - COPPER ALLOY
OVERMOLDING - LCP GF30
MATE-SIDE PLATING: SELECTIVE GOLD OVER NICKEL
PCB SIDE PLATING: TIN OVER NICKEL
 - c. BISCUIT - SPS GF30
 - d. SHIELDS - COPPER ALLOY
PLATING - TIN OVER NICKEL
3. DESIGN - GEOMETRY:
- a. ALL GRAPHIC DATA IS BASIC (NO TOLERANCE) AND MUST BE TAKEN FROM THE DATA FILE AT ITS LATEST REVISION.
 - b. N/A
 - c. GEOMETRIC DIMENSIONS AND TOLERANCES PER ASME Y14.5M-2009
 - d. EDGES AND UNDIMENSIONED DETAILS PER ISO13715
 - e. CORNERS SHOWN AS SHARP TO BE R 0.2 MAX.
 - f. MODULE MOUNTING SURFACE: SEALANT TO BE APPLIED TO THIS REGION ONLY. PARTING LINES PRESENT ON THIS SURFACE.

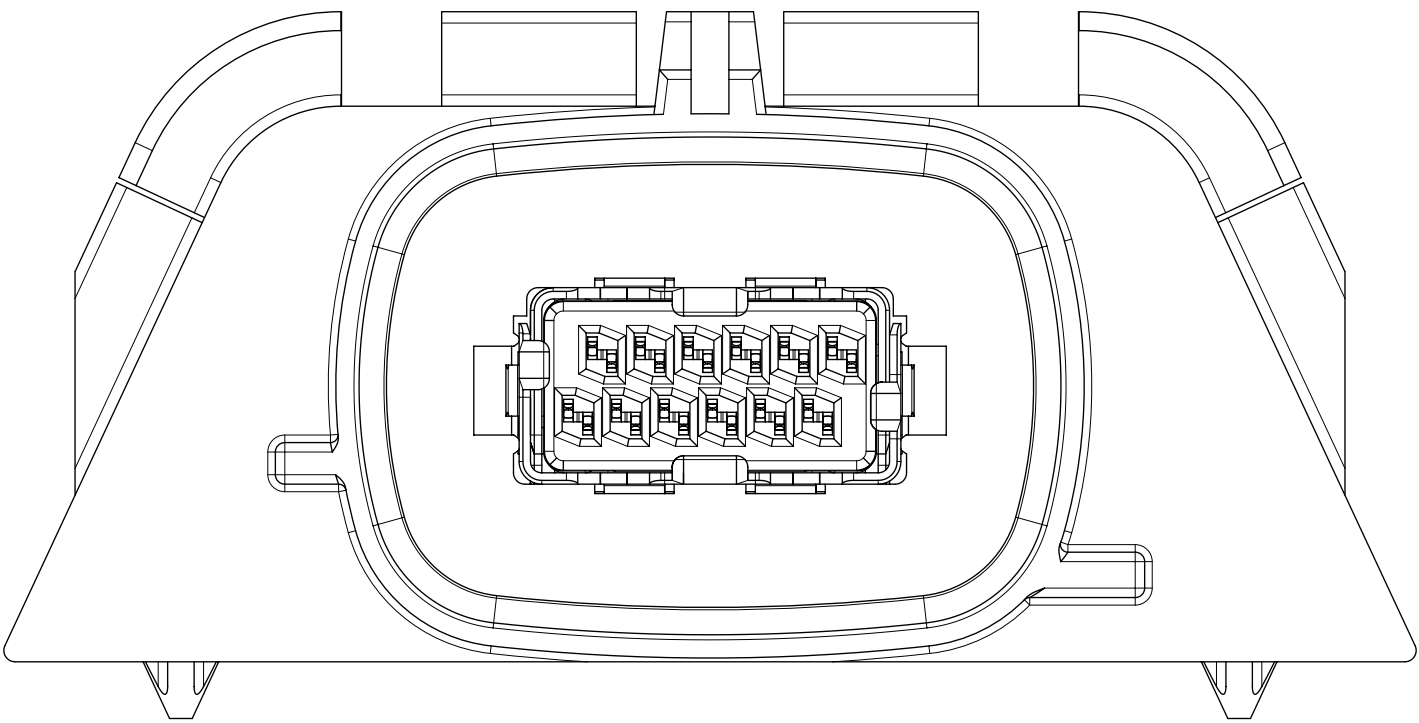
4. LASER MARKING TO BE MARKED WITH:
- HUMAN READABLE CODE (HRC)
 - PERMANENTLY APPLIED ON THE PART WITH 1.5mm LETTER SIZE
 - INFORMATION TO BE PRINTED
5 DIGIT JULIAN MANUFACTURING DATE STAMP YYDDDD



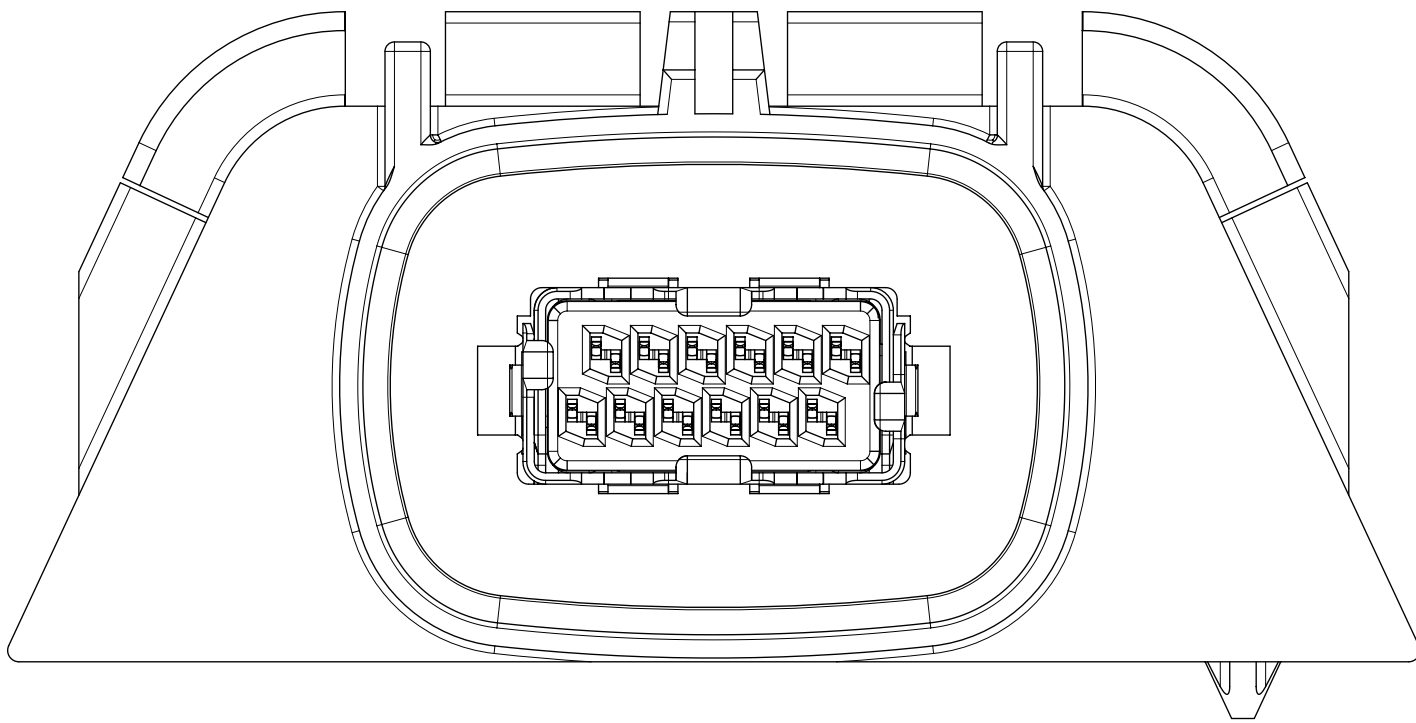
34857-05X6
KEY OPTION 'A'
COLOR: BLACK



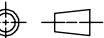
34857-06X6
KEY OPTION 'B'
COLOR: GRAY

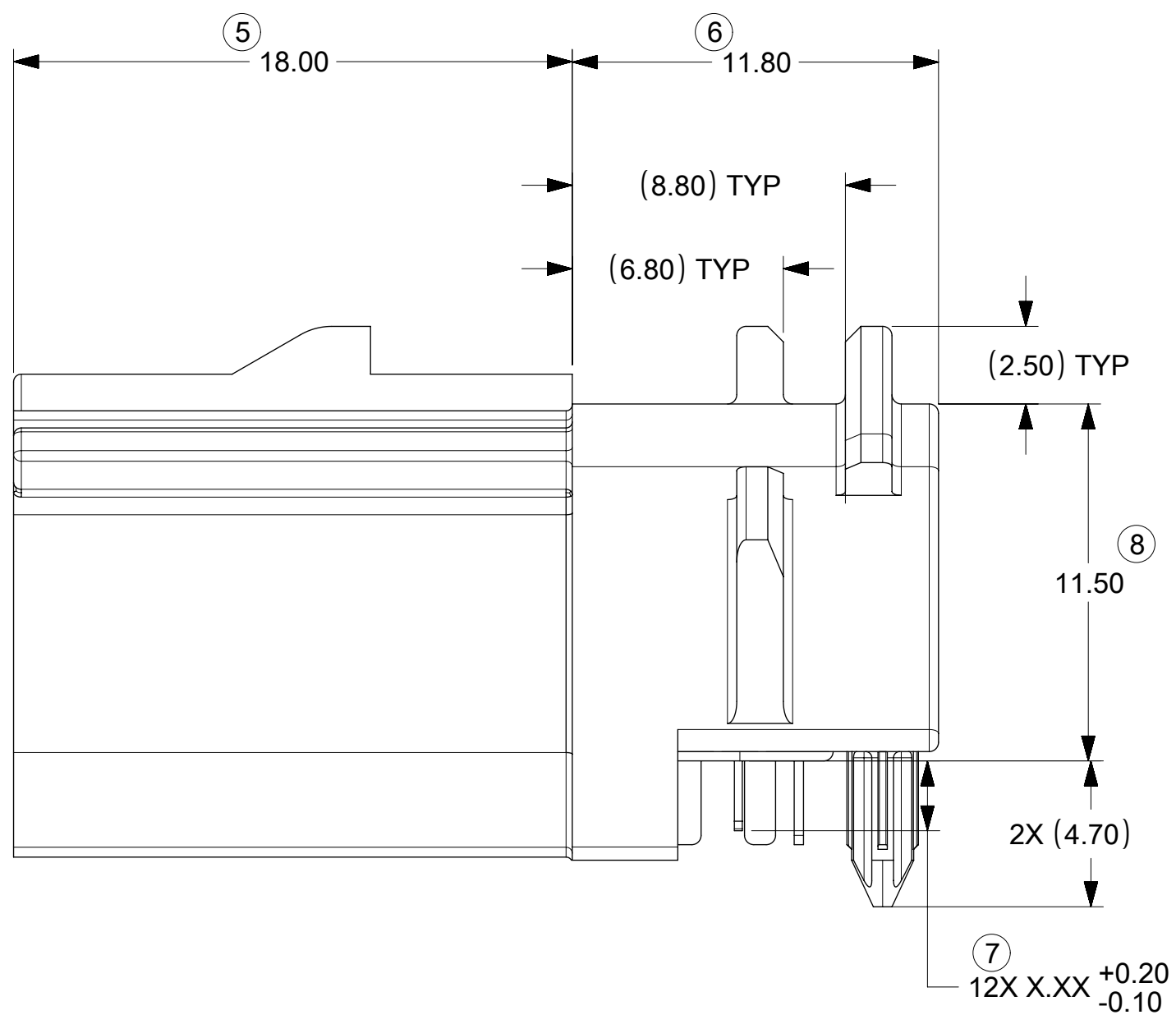
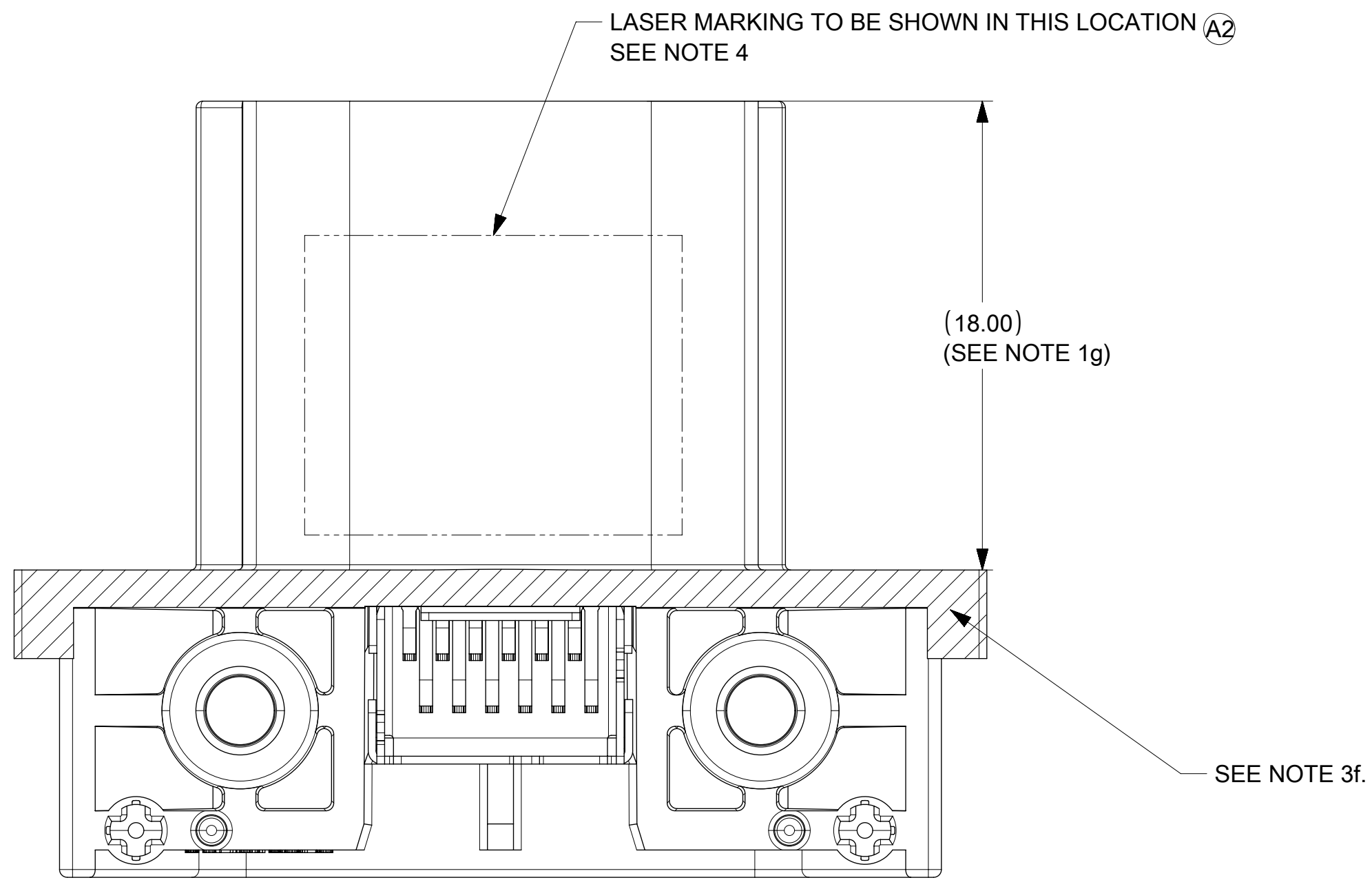
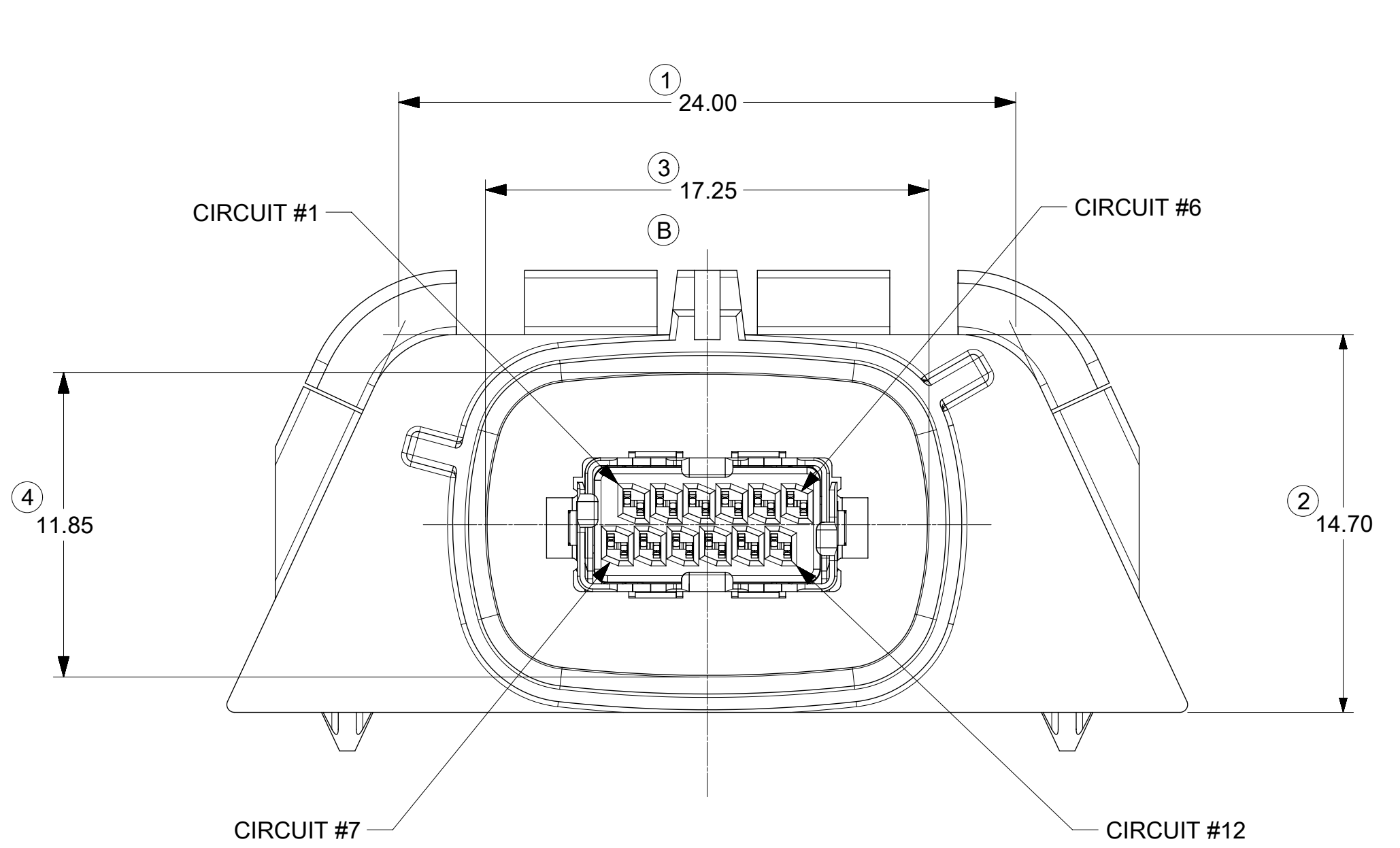
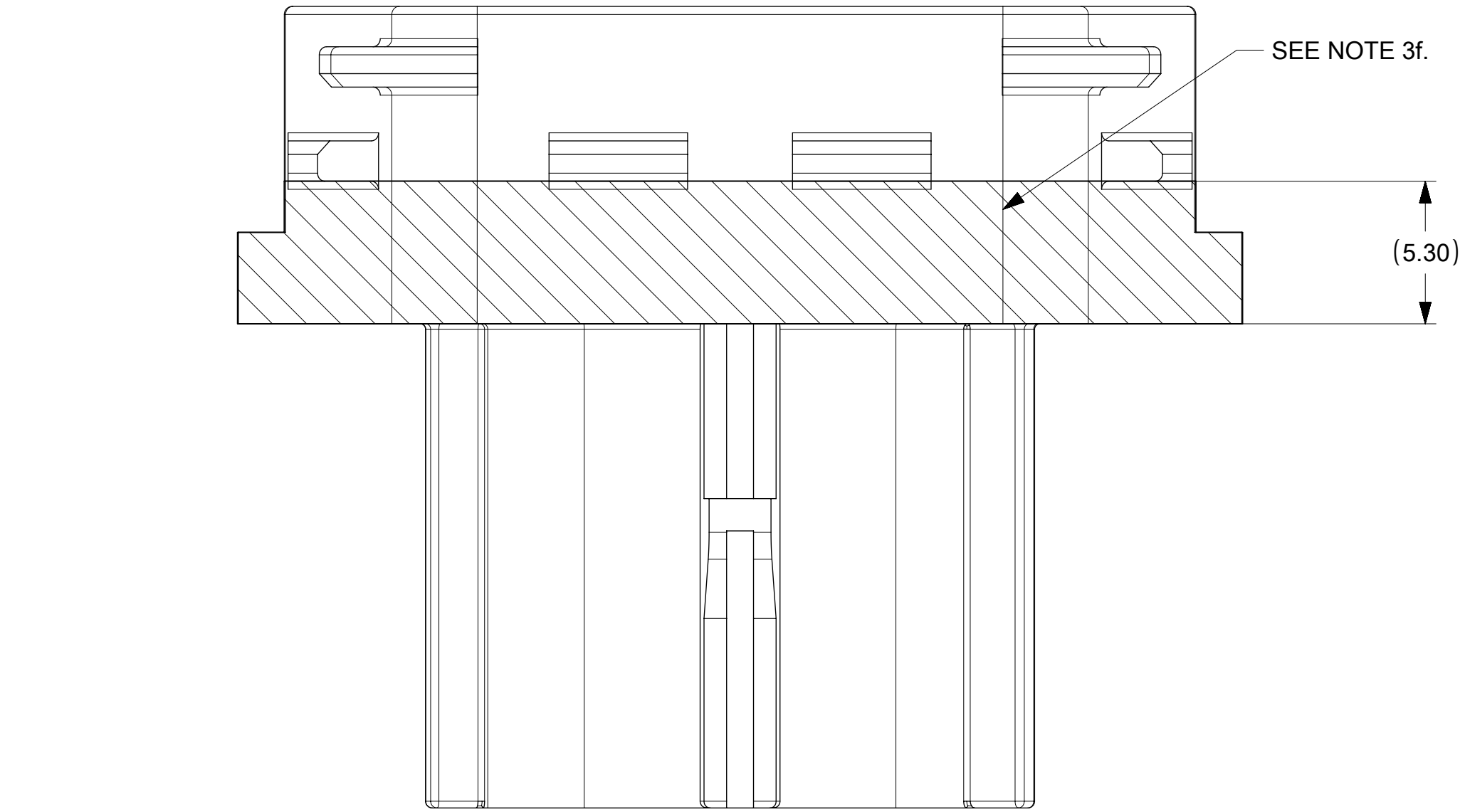


34857-07X6
KEY OPTION 'C'
COLOR: BROWN

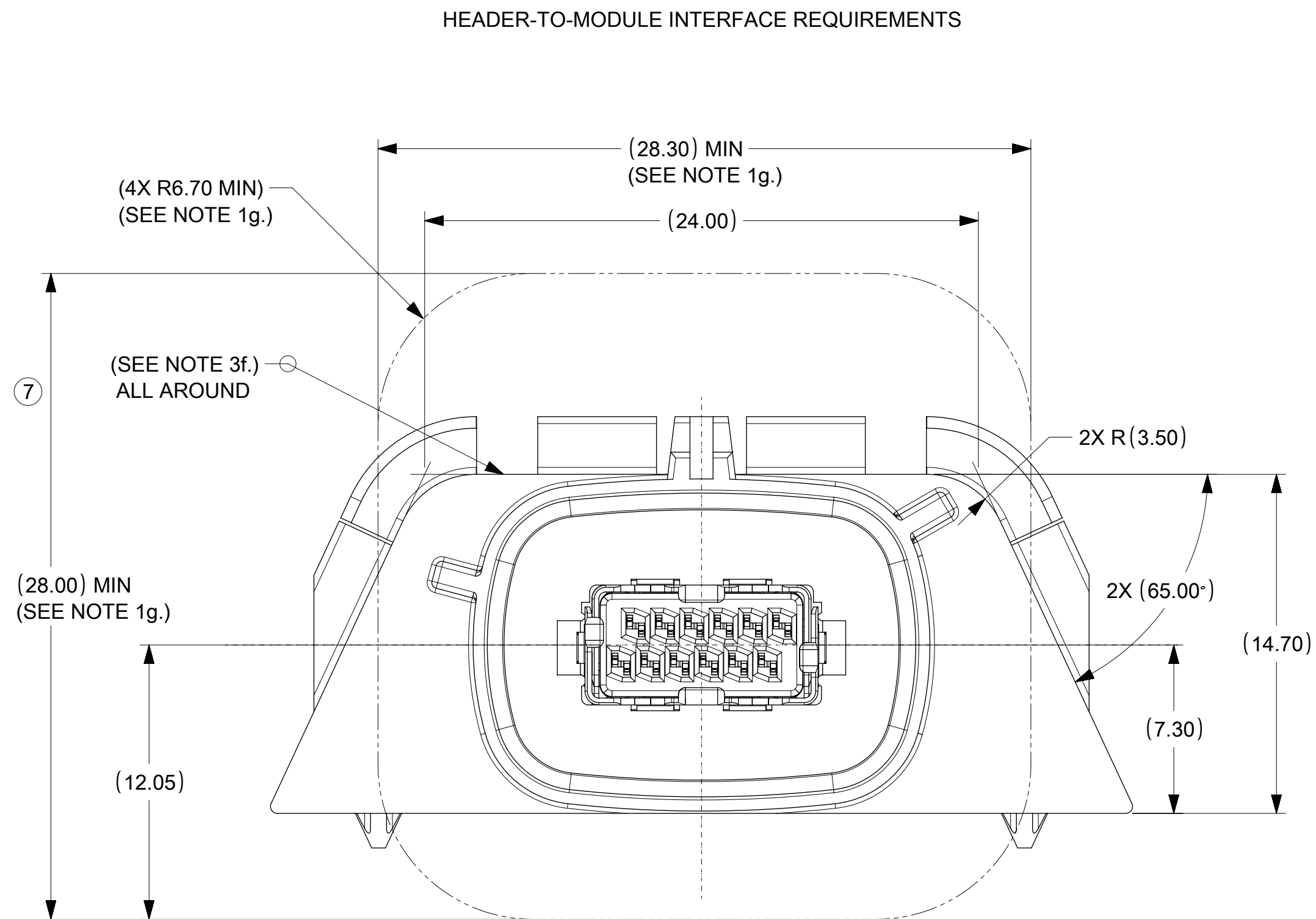
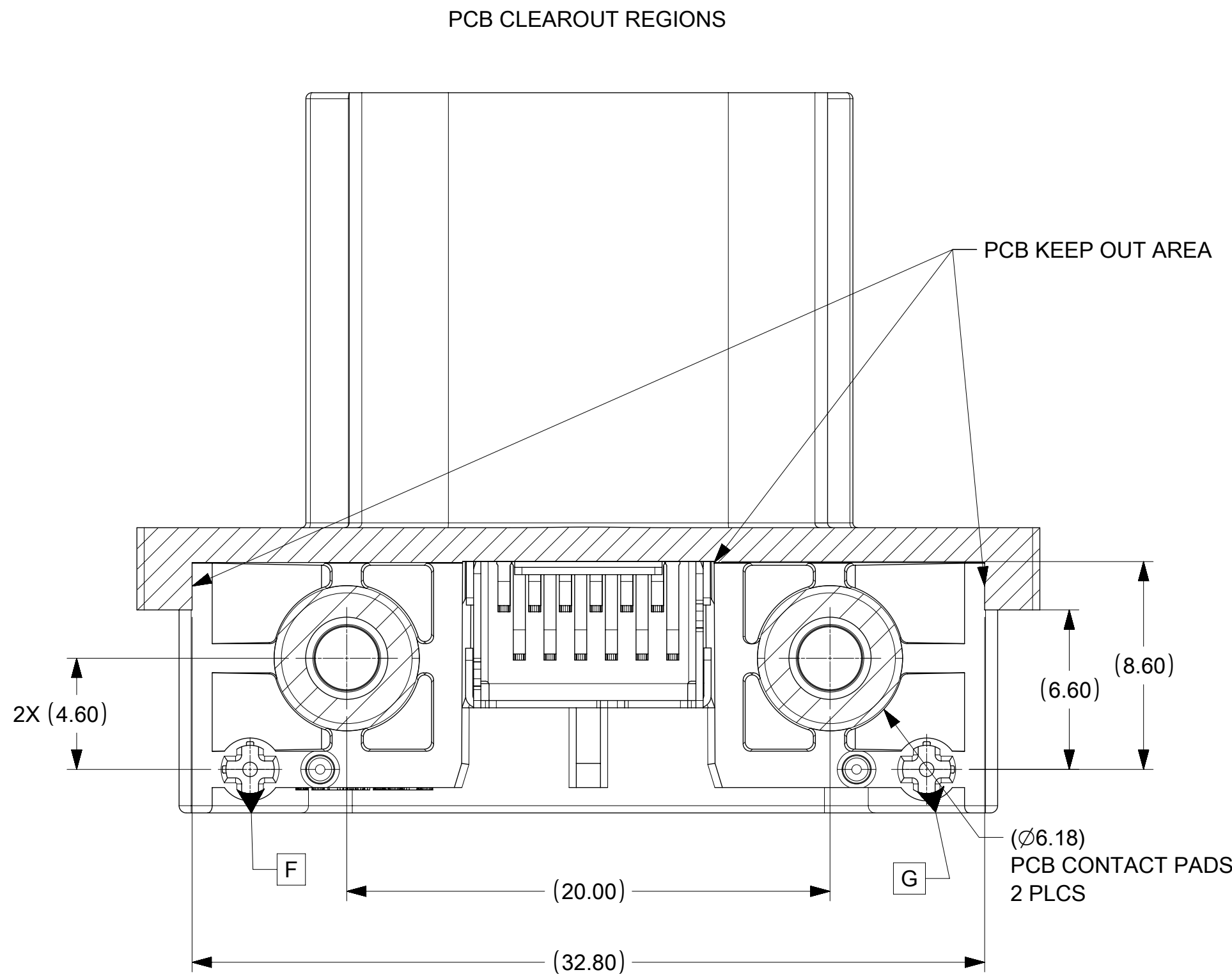


34857-08X6
KEY OPTION 'D'
COLOR: GREEN

THIS DRAWING CONTAINS INFORMATION THAT IS PROPRIETARY TO MOLEX ELECTRONIC TECHNOLOGIES, LLC AND SHOULD NOT BE USED WITHOUT WRITTEN PERMISSION															
EC NO: 113381 DRWN: ZDEDMON CHKD: DGILKEY REV APPR: DNAYLIS	2017/01/16 2017/11/29 2018/01/03	GENERAL TOLERANCES (UNLESS SPECIFIED)		DIMENSION UNITS		SCALE		<div>molex®</div> <div>12 CKT HSAUTOLINK II R/A SEALED HEADER ASM FLANGED</div>							
		ANGULAR TOL ± 1.0 °		mm		5:1									
		4 PLACES ±		DRWN BY		DATE									
		3 PLACES ±		CDILLON		2015/12/01									
		2 PLACES ± 0.13		CHK'D BY		DATE		PRODUCT CUSTOMER DRAWING							
		1 PLACE ± 0.25		DGILKEY		2017/11/29									
		0 PLACES ±		APPR BY		DATE									
		DRAFT WHERE APPLICABLE MUST REMAIN WITHIN DIMENSIONS		DNAYLIS		2018/01/03									
		B3		REV		D		THIRD ANGLE PROJECTION		34857		MATERIAL NUMBER		CUSTOMER	
										DOCUMENT NUMBER		DOC TYPE		DOC PART	
								SD-34857-001		PSD		000		1 OF 3	



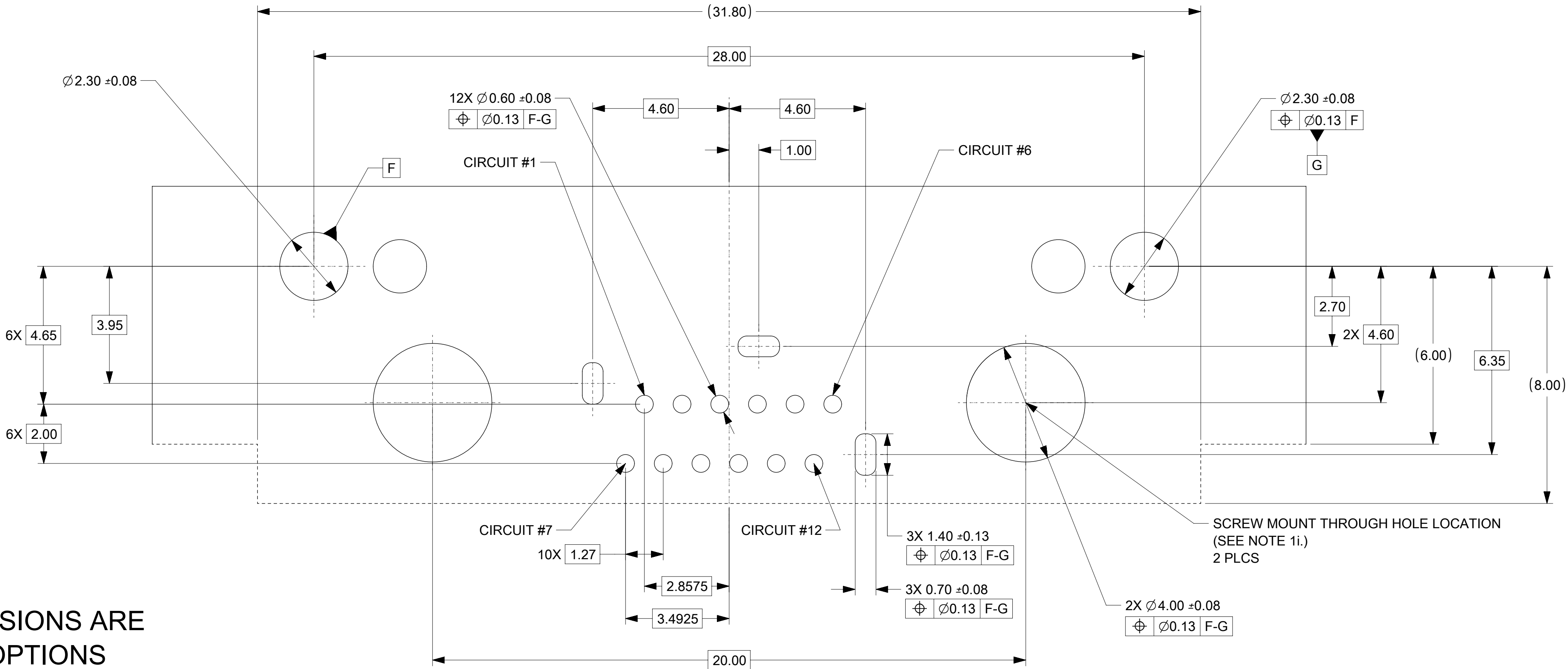
DIM 7	
PART NUMBER	VALUE
34857-0X06	2.25
34857-0X16	1.75



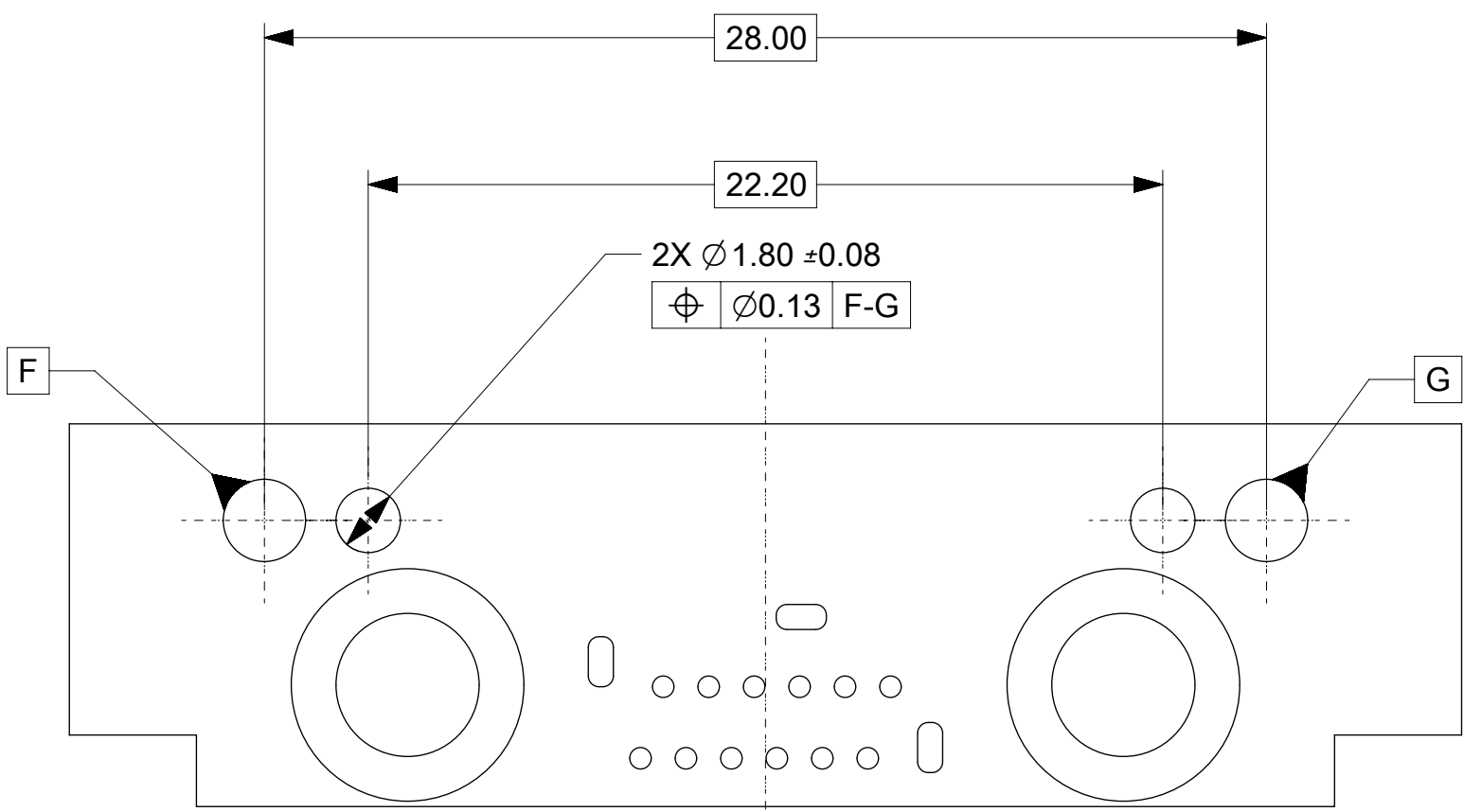
THIS DRAWING CONTAINS INFORMATION THAT IS PROPRIETARY TO MOLEX ELECTRONIC TECHNOLOGIES, LLC AND SHOULD NOT BE USED WITHOUT WRITTEN PERMISSION

EC NO: 113381 DRWN: ZDEDMON CHKD: DGILKEY REV/ APPR: DNAYLIS	2017/01/16	GENERAL TOLERANCES (UNLESS SPECIFIED) ANGULAR TOL ± 1.0 ° 4 PLACES ± 3 PLACES ± 2 PLACES ± 0.13 1 PLACE ± 0.25 0 PLACES ± DRAFT WHERE APPLICABLE MUST REMAIN WITHIN DIMENSIONS	DIMENSION UNITS	SCALE	molex [®]		
	2017/11/29		mm	5:1			
	2018/01/03		DRWN BY	DATE	12 CKT HSAUTOLINK II R/A SEALED HEADER ASM FLANGED		
			CDILLON	2015/12/01			
			CHK'D BY	DATE	PRODUCT CUSTOMER DRAWING		
			DGILKEY	2017/11/29			
			APPR BY	DATE	SERIES MATERIAL NUMBER CUSTOMER		
			DNAYLIS	2018/01/03			
			DRAWING SIZE	THIRD ANGLE PROJECTION	DOCUMENT NUMBER DOC TYPE DOC PART SHEET NUMBER		
			D				
B3			34857			GENERAL MARKET	
			SD-34857-001			2 OF 3	

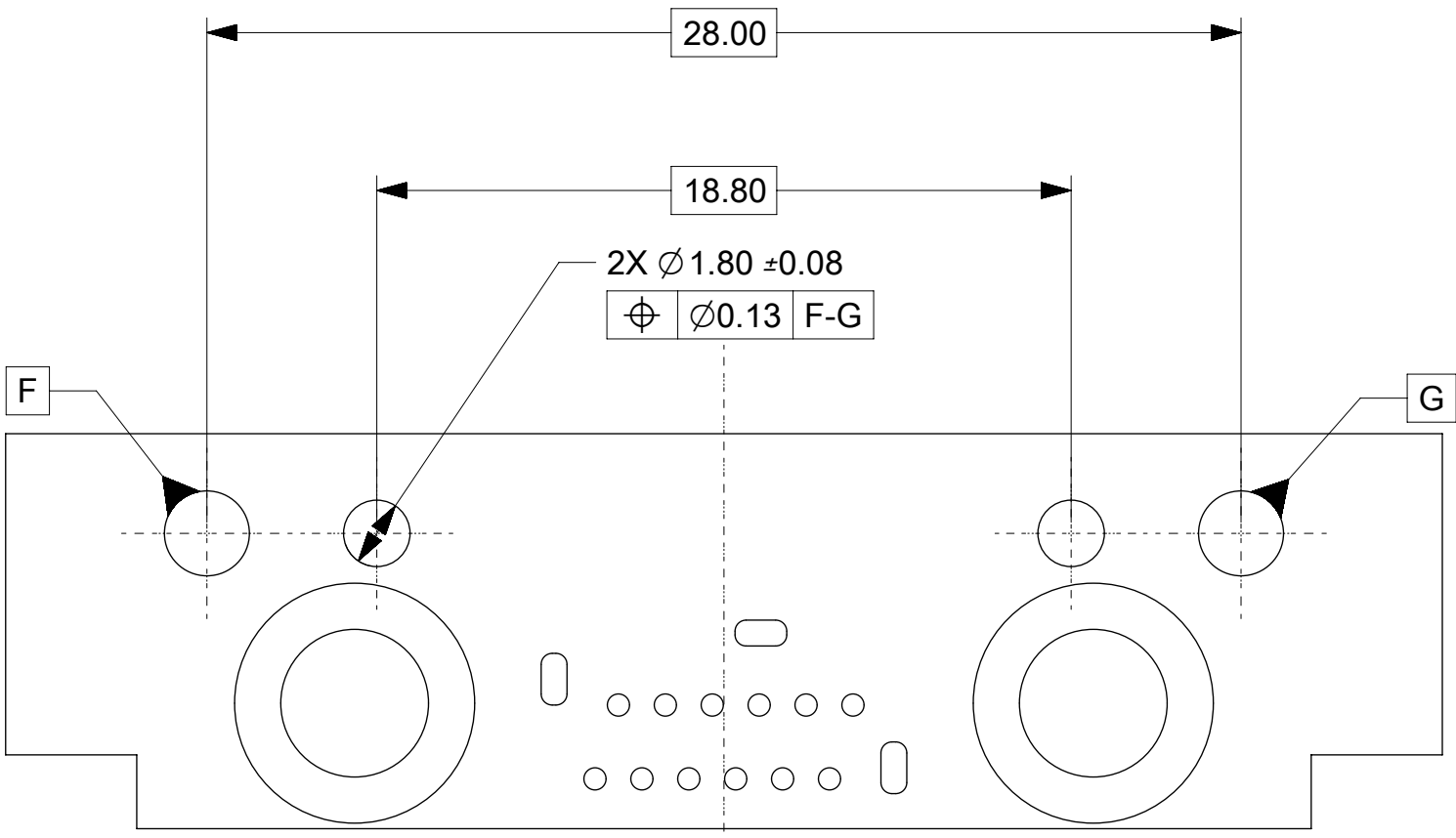
RECOMMENDED PCB LAYOUT - HEADER SIDE PCB



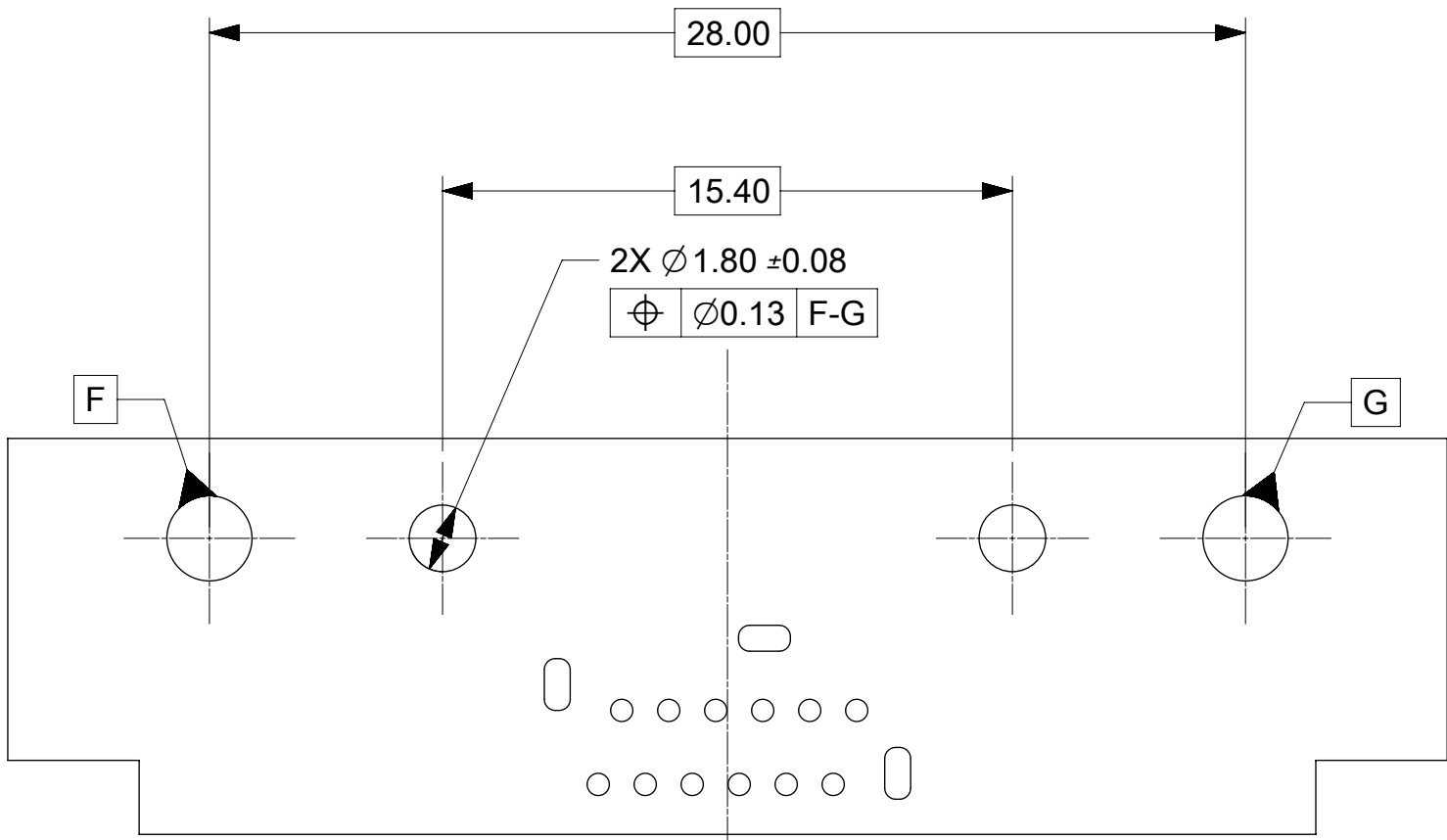
ALL THROUGH HOLE DIMENSIONS ARE APPLICABLE FOR ALL KEY OPTIONS



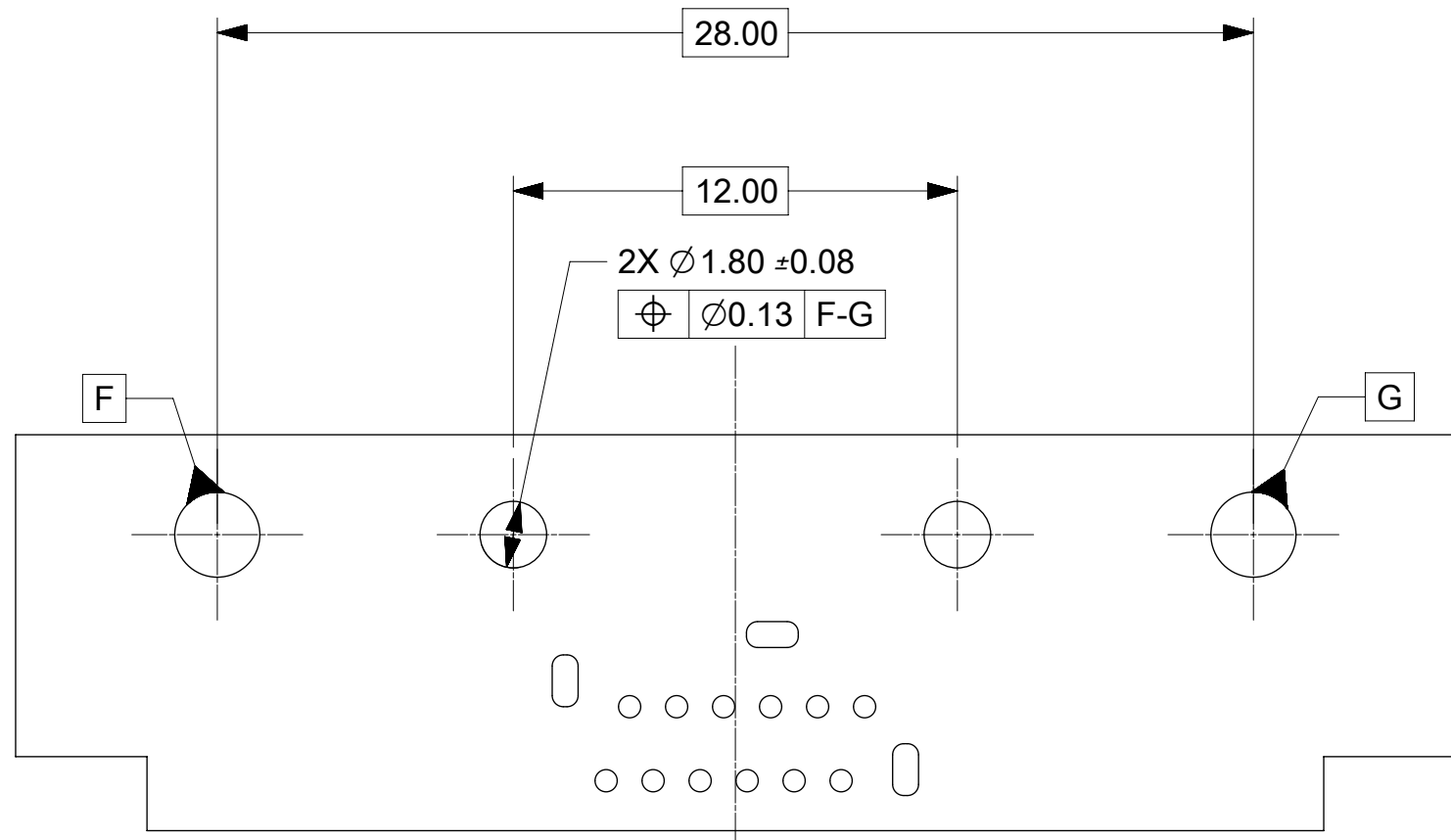
PCB KEY FEATURES
OPTION 'A'



PCB KEY FEATURES
OPTION 'B'

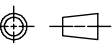


PCB KEY FEATURES
OPTION 'C'



PCB KEY FEATURES
OPTION 'D'

THIS DRAWING CONTAINS INFORMATION THAT IS PROPRIETARY TO MOLEX ELECTRONIC TECHNOLOGIES, LLC AND SHOULD NOT BE USED WITHOUT WRITTEN PERMISSION

EC NO: 113381 DRWN: ZDEDMON CHKD: DGILKEY REV/ APPR: DNAYLIS	2017/01/16 2017/11/29 2018/01/03	GENERAL TOLERANCES (UNLESS SPECIFIED)		DIMENSION UNITS		SCALE		<div>molex®</div> <div>12 CKT HSAUTOLINK II R/A SEALED HEADER ASM FLANGED</div>					
				mm		10:1							
		ANGULAR TOL ± 1.0 °		DRWN BY		DATE		CDILLON 2015/12/01					
		4 PLACES ±		CHKD BY		DATE							
		3 PLACES ±		DGILKEY 2017/11/29									
		2 PLACES ± 0.13		APPR BY		DATE		PRODUCT CUSTOMER DRAWING					
		1 PLACE ± 0.25		DNAYLIS 2018/01/03									
		0 PLACES ±		DRAWING SIZE		THIRD ANGLE PROJECTION							
		DRAFT WHERE APPLICABLE MUST REMAIN WITHIN DIMENSIONS		D				SERIES		MATERIAL NUMBER		CUSTOMER	
						34857				GENERAL MARKET			
						DOCUMENT NUMBER		DOC TYPE		DOC PART		SHEET NUMBER	
B3						SD-34857-001		PSD		000		3 OF 3	

RELEASE STATUS	RELEASE DATE
----------------	--------------