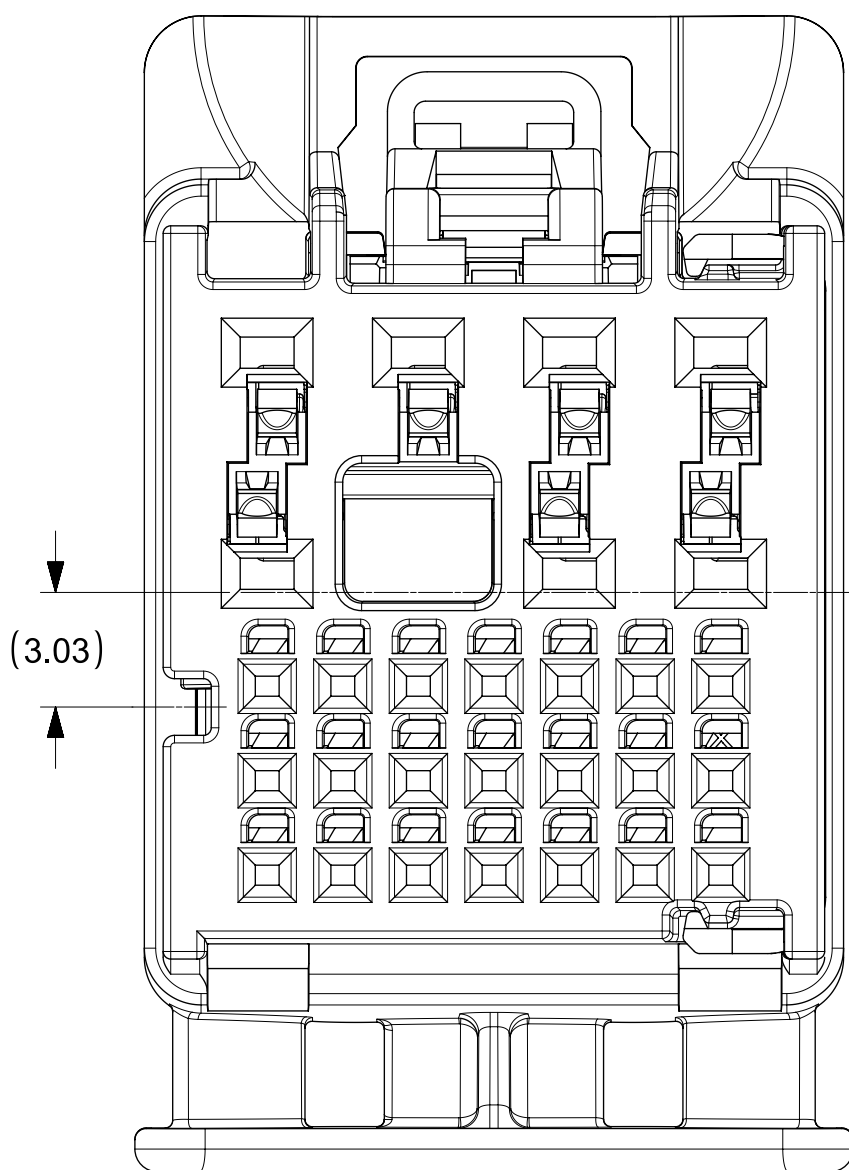
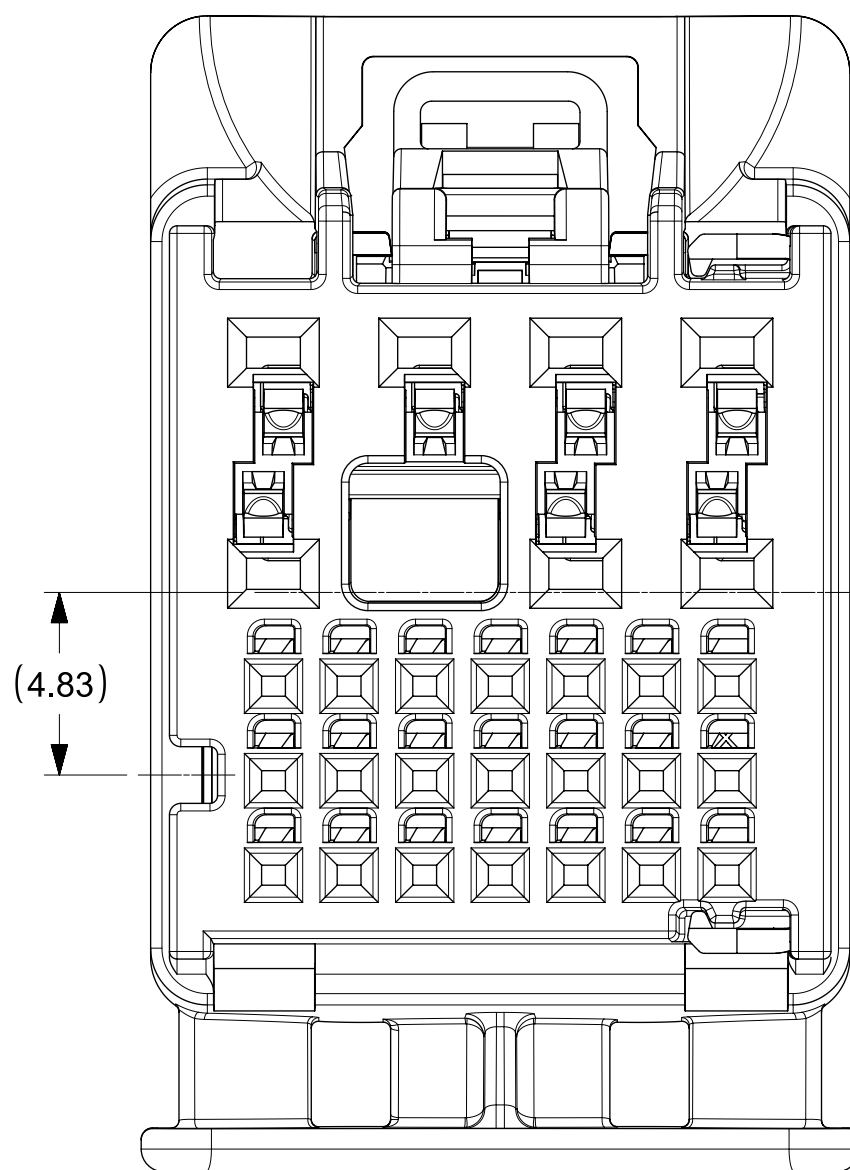


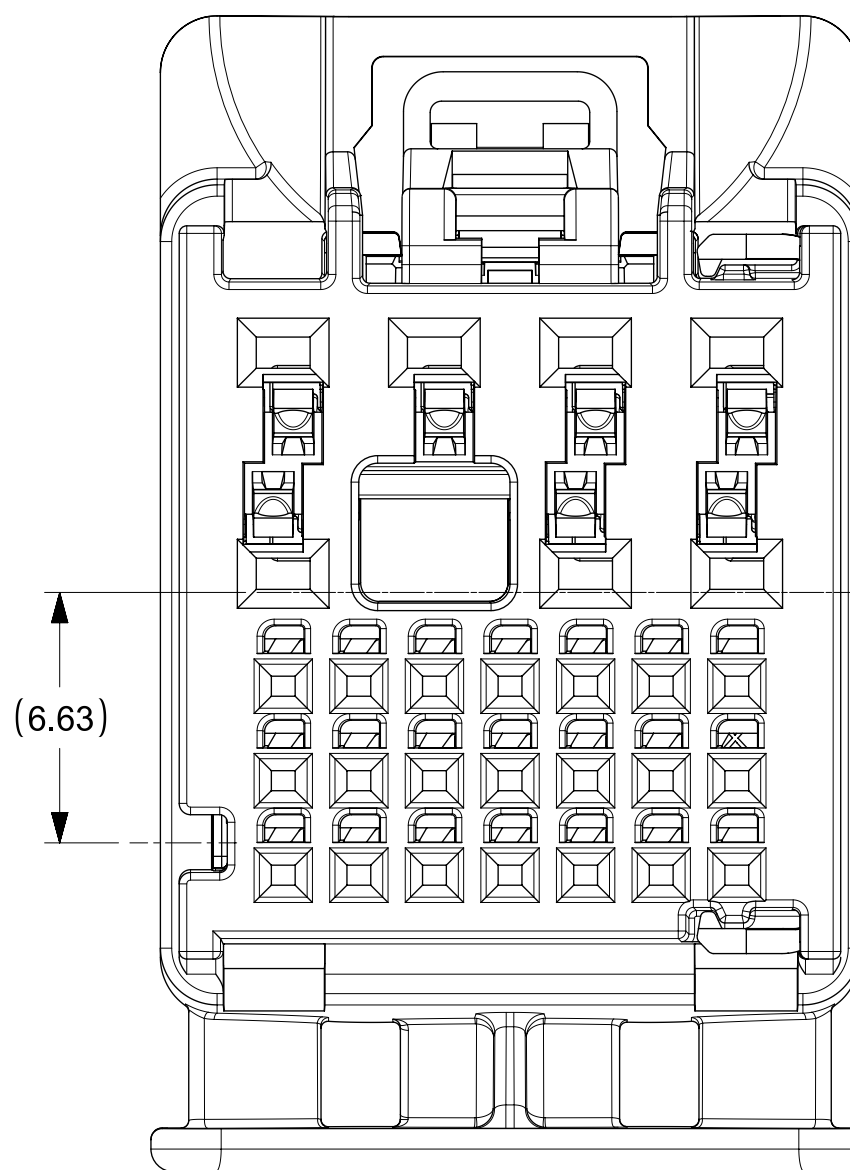
28WAY CONNECTOR ASSY  
KEY 1  
P/N 1600140001



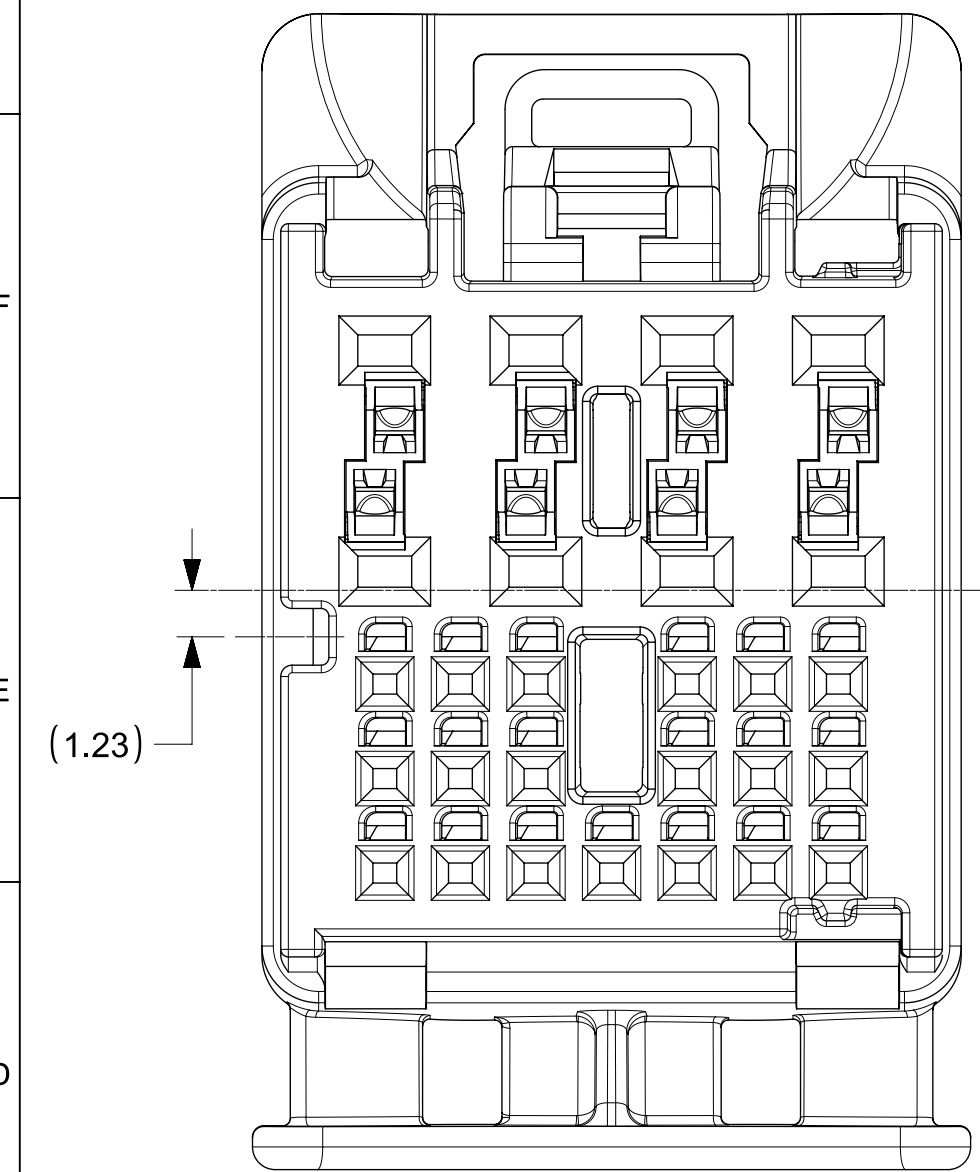
28WAY CONNECTOR ASSY  
KEY 2  
P/N 1600140002



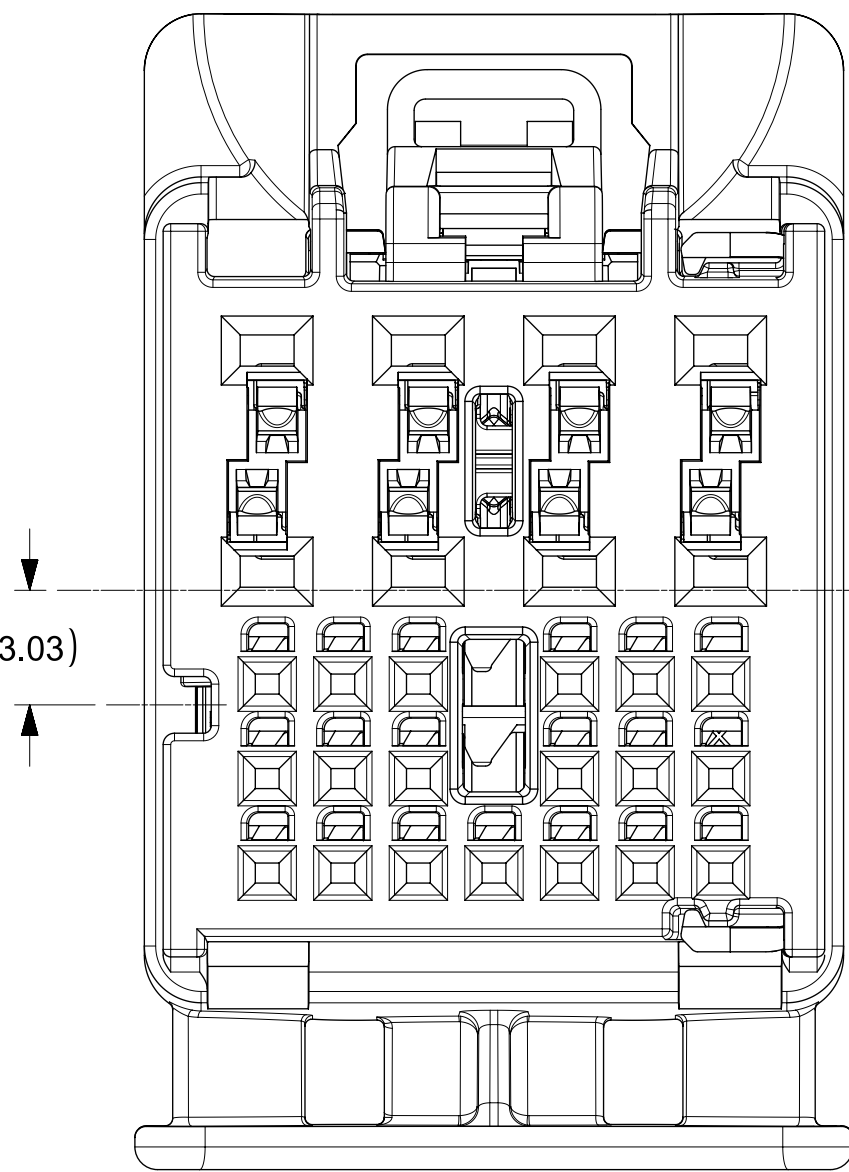
28WAY CONNECTOR ASSY  
KEY 3  
P/N 1600140003



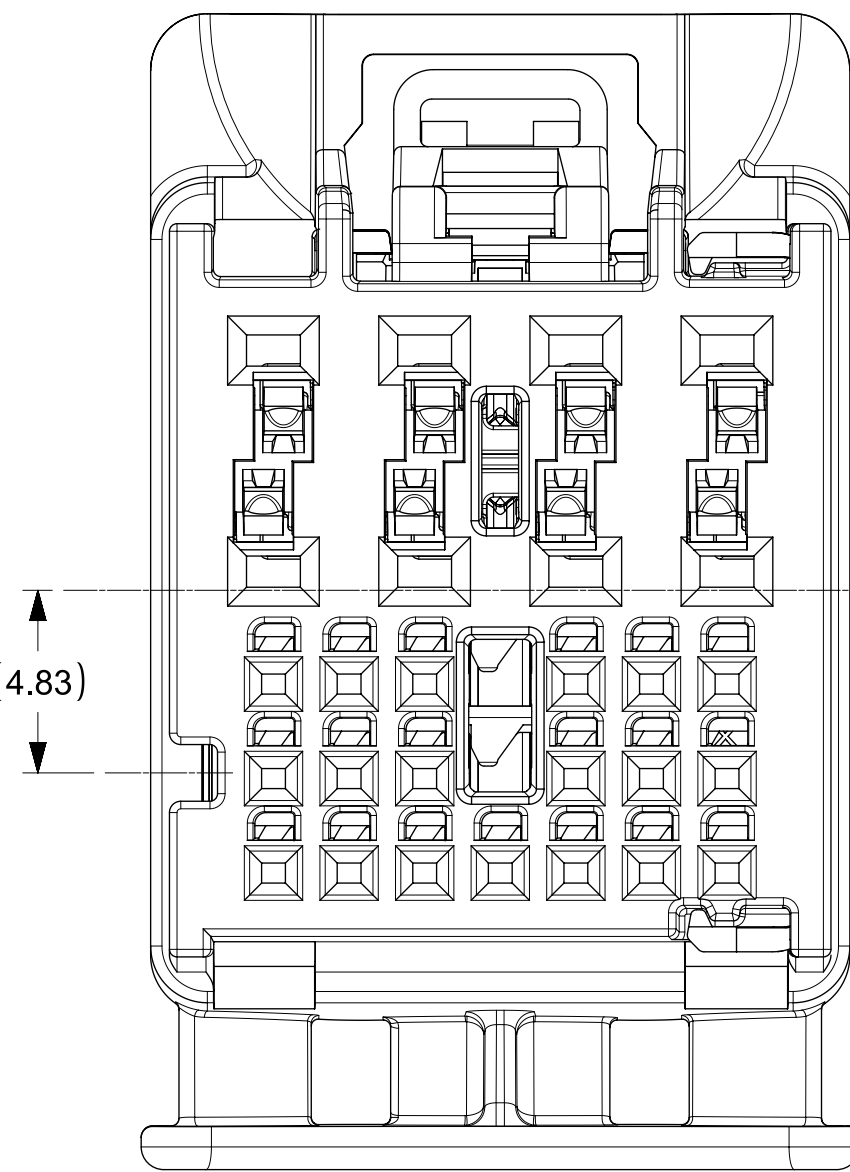
28WAY CONNECTOR ASSY  
KEY 4  
P/N 1600140004



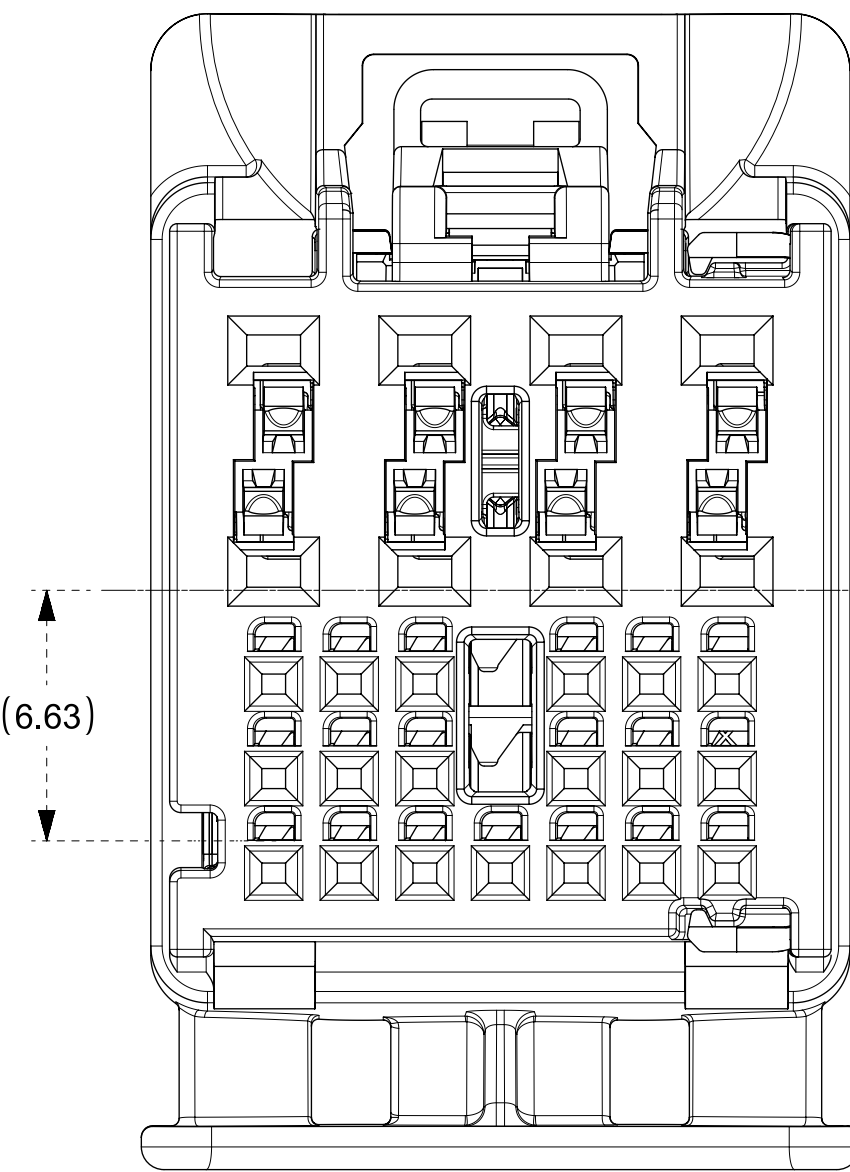
27WAY CONNECTOR ASSY  
KEY 1  
P/N 1600290001



27WAY CONNECTOR ASSY  
KEY 2  
P/N 1600290002

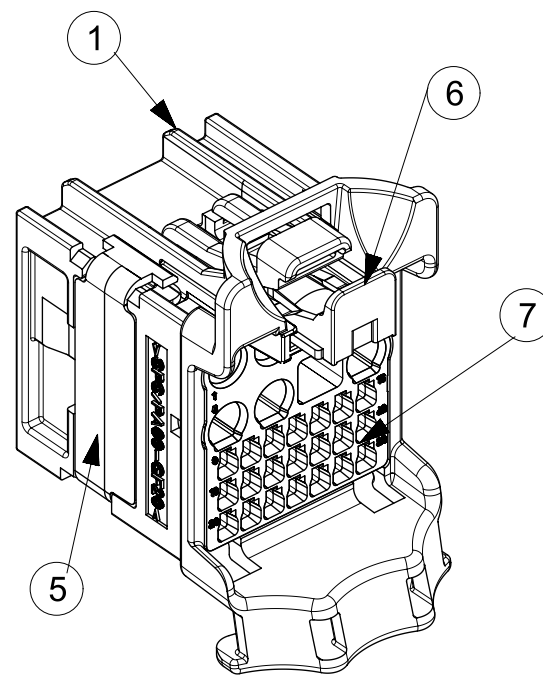
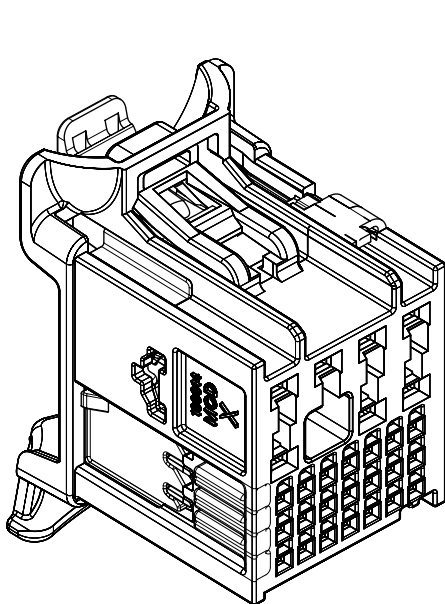


27WAY CONNECTOR ASSY  
KEY 3  
P/N 1600290003




27WAY CONNECTOR ASSY  
KEY 4  
P/N 1600290004

| PART NUMBER     | PLATING     | SUPPLIER | WIRE GAGE<br>(mm2) | TERMINAL FAMILY                     | WIRE SPECIFICATION   |
|-----------------|-------------|----------|--------------------|-------------------------------------|--|
| 200096-0101     | TIN PLATING | MOLEX    | 0.35               | TAK FAMILY (0.5 mm)                 | VW 60306 or GMW 15626<br>(SEE APPLICATION<br>SPECIFICATION<br>FOR MORE DETAILS)                      |
| 200096-0201     |             | MOLEX    | 0.13               |                                     |  |
| 2272196-2       |             | TE       | 0.35               | Generation 50 Locking Lance (0.5mm) | SAE/ J1128<br>THIN WALL INSULATION<br><br>GMW 15626<br>INSULATION TYPE<br>FLR<br>(REGULAR THIN WALL) |
| 2272196-1       |             |          | 0.13               |                                     |  |
| 35072403        |             | DELPHI   | 0.35 - 0.5         | TAXI TERM OCS 1.2                   |  |
| 35072404        |             |          | 0.75 - 0.8         |                                     |  |
| 35072405        |             |          | 0.8 - 1.0          |                                     |  |
| 35072406        |             |          | 1.25 - 1.5         |                                     |  |
| SMSA-A031T-M1.2 |             | JST      | 0.5 - 0.75         | MSA 1.2mm TERMINAL                  |  |
| SMSA-A041T-M1.2 |             |          | 1.0 - 1.5          |                                     |  |



- NOTES: VALID UNLESS OTHERWISE SPECIFIED
- 27WAY/28WAY ARE DEPOPULATED VARIANTS OF THE 29WAY
1. GENERAL:
    - a. APPLICATION SPECIFICATION SEE: AS-160014-001
    - b. PRODUCT SPECIFICATION SEE: PS-160014-001
    - c. PACKAGING SPECIFICATION PER MOLEX DRAWING: PK-31302-266
    - d. PARTS MUST BE IN COMPLIANCE TO MOLEX CHEMICAL SUBSTANCES FOR PRODUCTS AND PACKAGING SPECIFICATION: ES-40000-5016
    - e. DATA MUST BE SUBMITTED UNDER THE MOLEX PART NUMBER TO IMDS (COMPANY ID#13255)
  2. DESIGN - MATERIALS:
    - a. SEE BOM TABLE
  3. DESIGN - GEOMETRY:
    - a. ALL GRAPHIC DATA IS BASIC (NO TOLERANCE) AND MUST BE TAKEN FROM THE DATA FILE AT ITS LATEST REVISION.
    - b. PRODUCT DESIGN MODEL NUMBER(S): SEE BOM TABLE
    - c. GEOMETRIC DIMENSIONS AND TOLERANCES PER ASME Y14.5M-2009
    - d. EDGES AND UNDIMENSIONED DETAILS PER ISO13715
    - e. CORNERS SHOWN AS SHARP TO BE R 0.2 MAX.
    - f. MARKED TEXT TO INCLUDE RECYCLING CODE, CAVITY ID, VENDOR IDENTIFICATION, AND CUSTOMER MATERIAL NUMBER.
      1. LASER ETCHED DATE CODE
        - 1ST THROUGH 2ND DIGIT = CALENDAR YEAR
        - 3RD THROUGH 5TH DIGIT = "DAY #" OF YEAR
        - 6TH THROUGH 7TH DIGIT = HOUR OF DAY
        - 8TH THROUGH 9TH DIGIT = MINUTE OF HOUR
        - 10TH THROUGH 11TH DIGIT = SECOND OF MINUTE
  4. DESIGN - MANUFACTURING:
    - a. VISUAL DEFECTS SHALL MEET COSMETIC STANDARD PS-45499-002 (Class B)

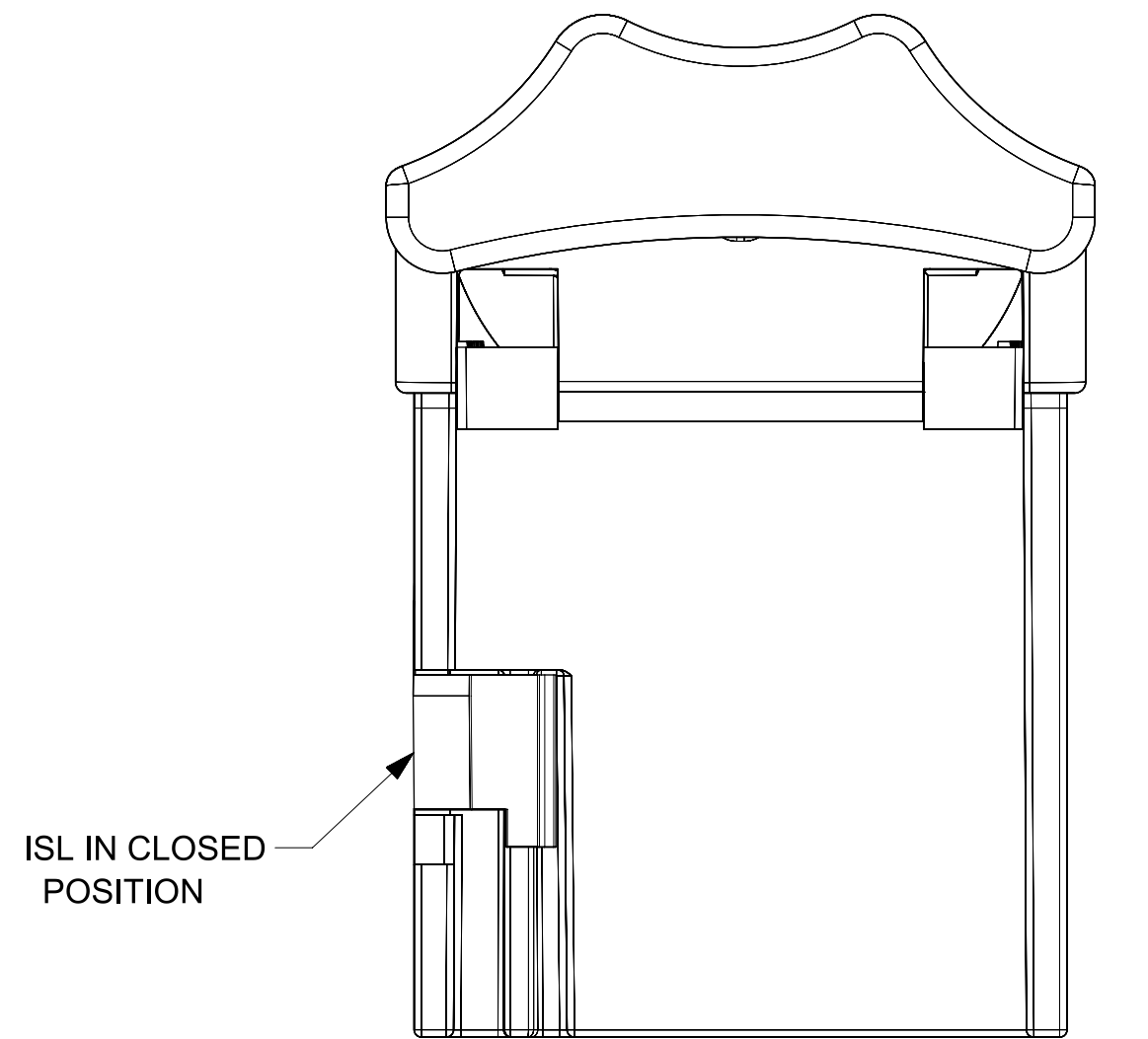
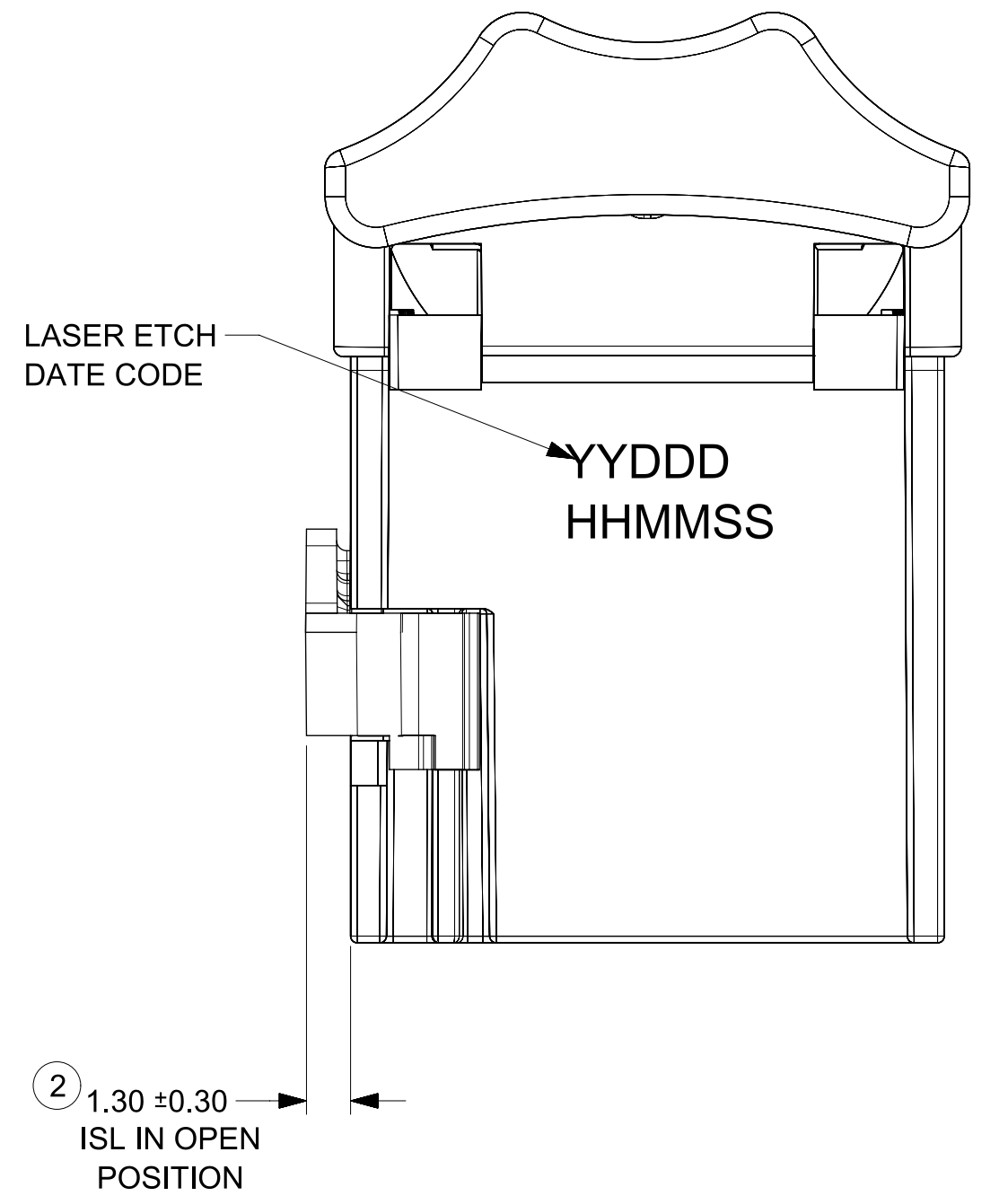
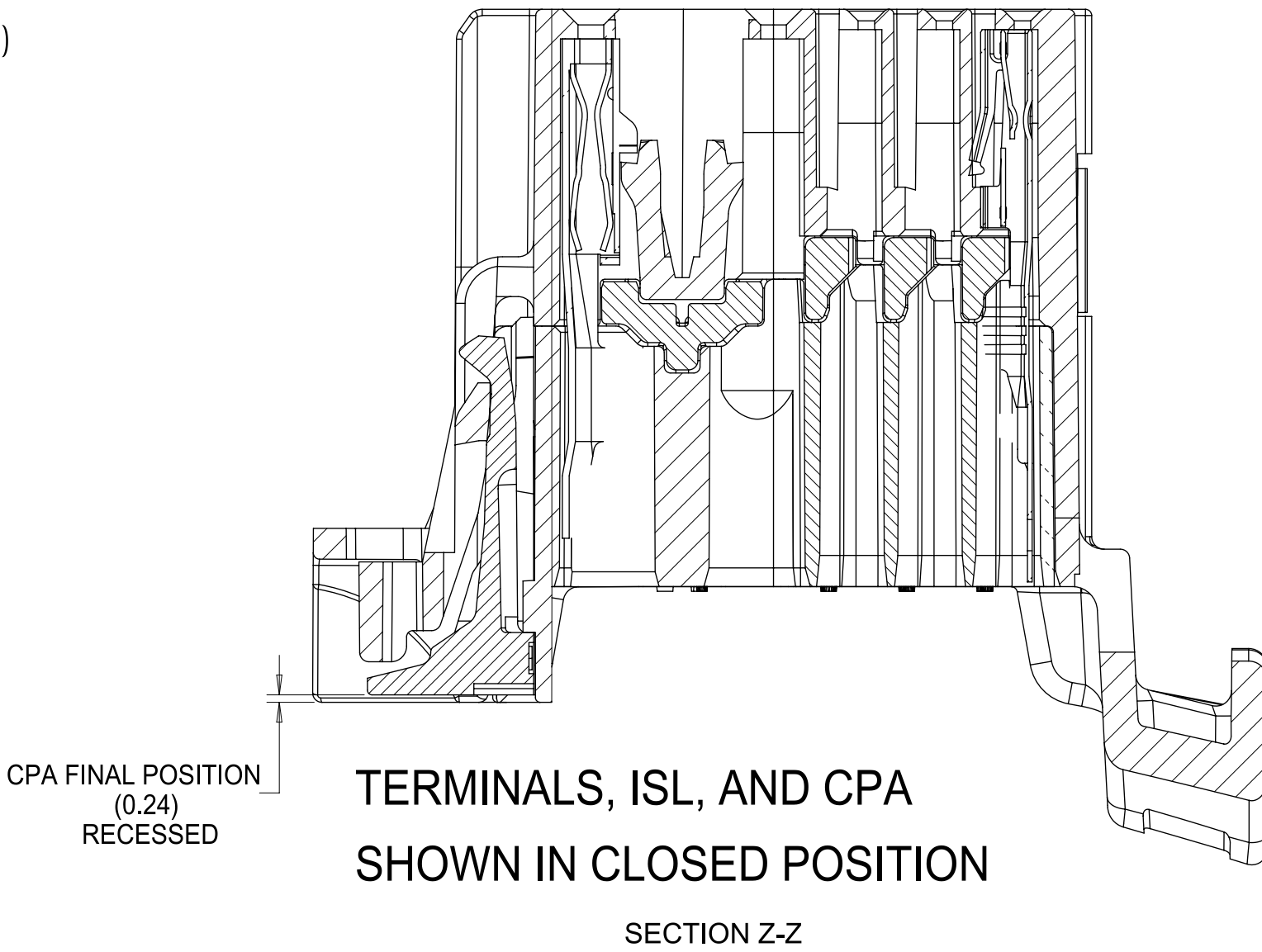
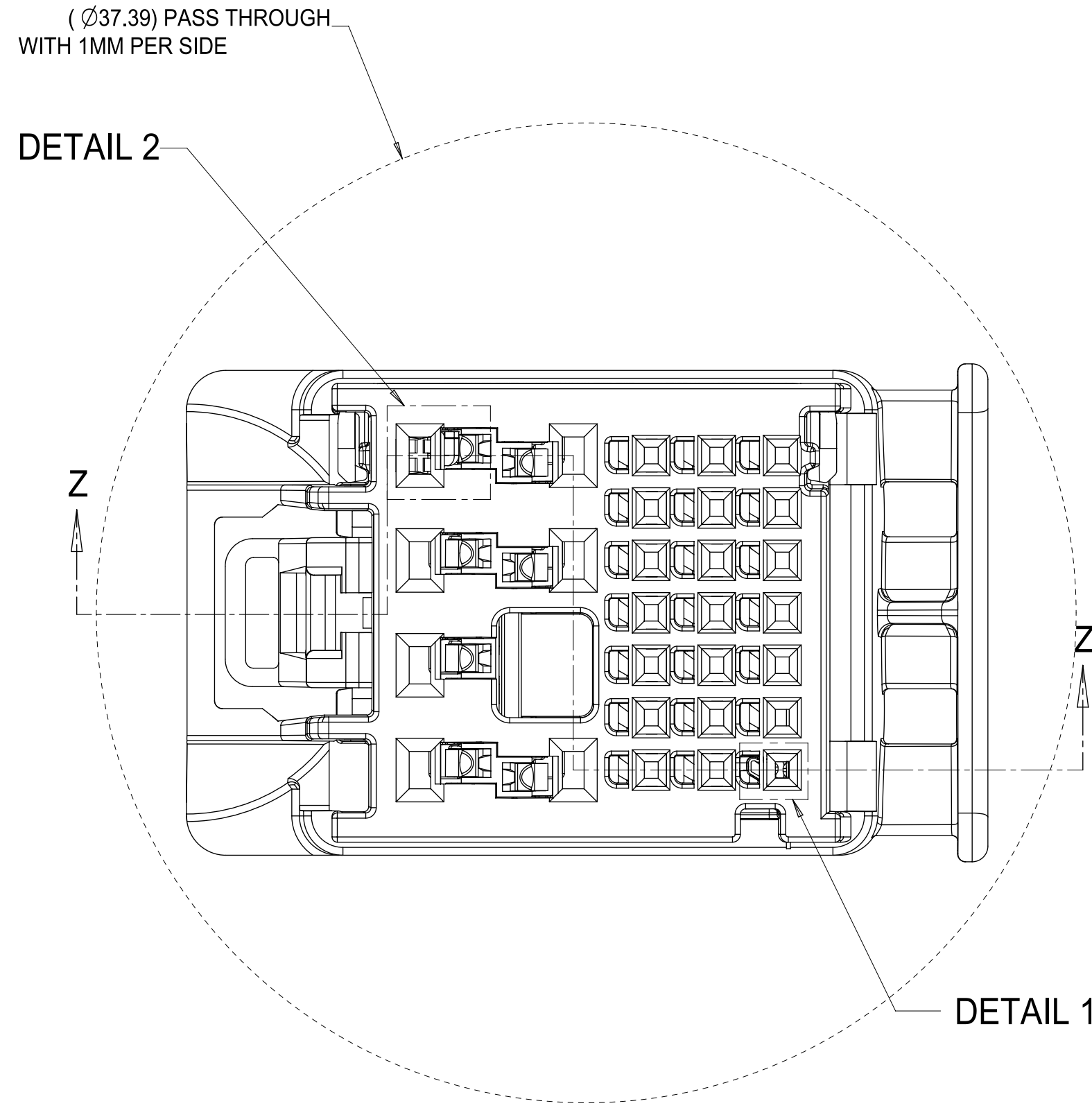
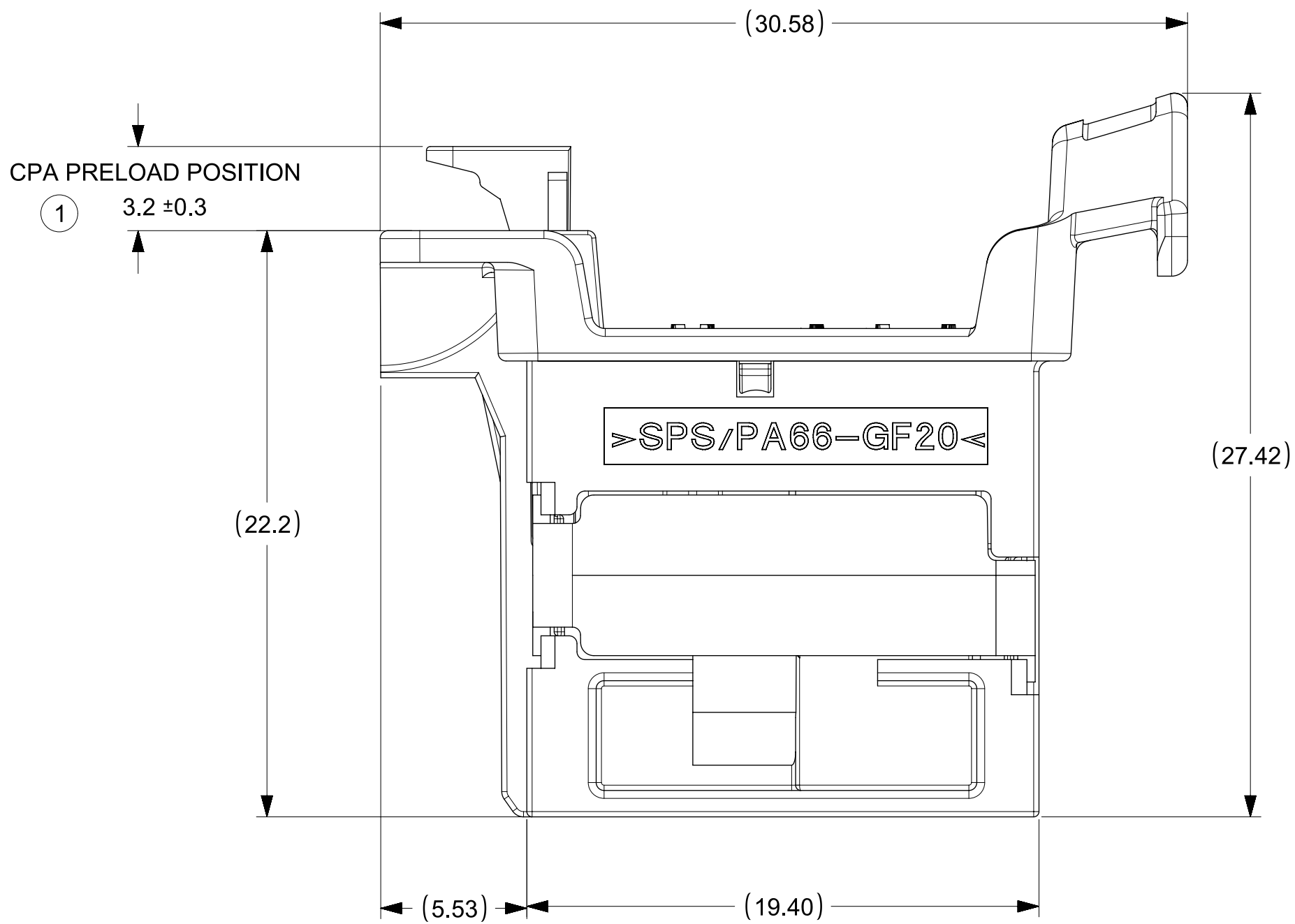
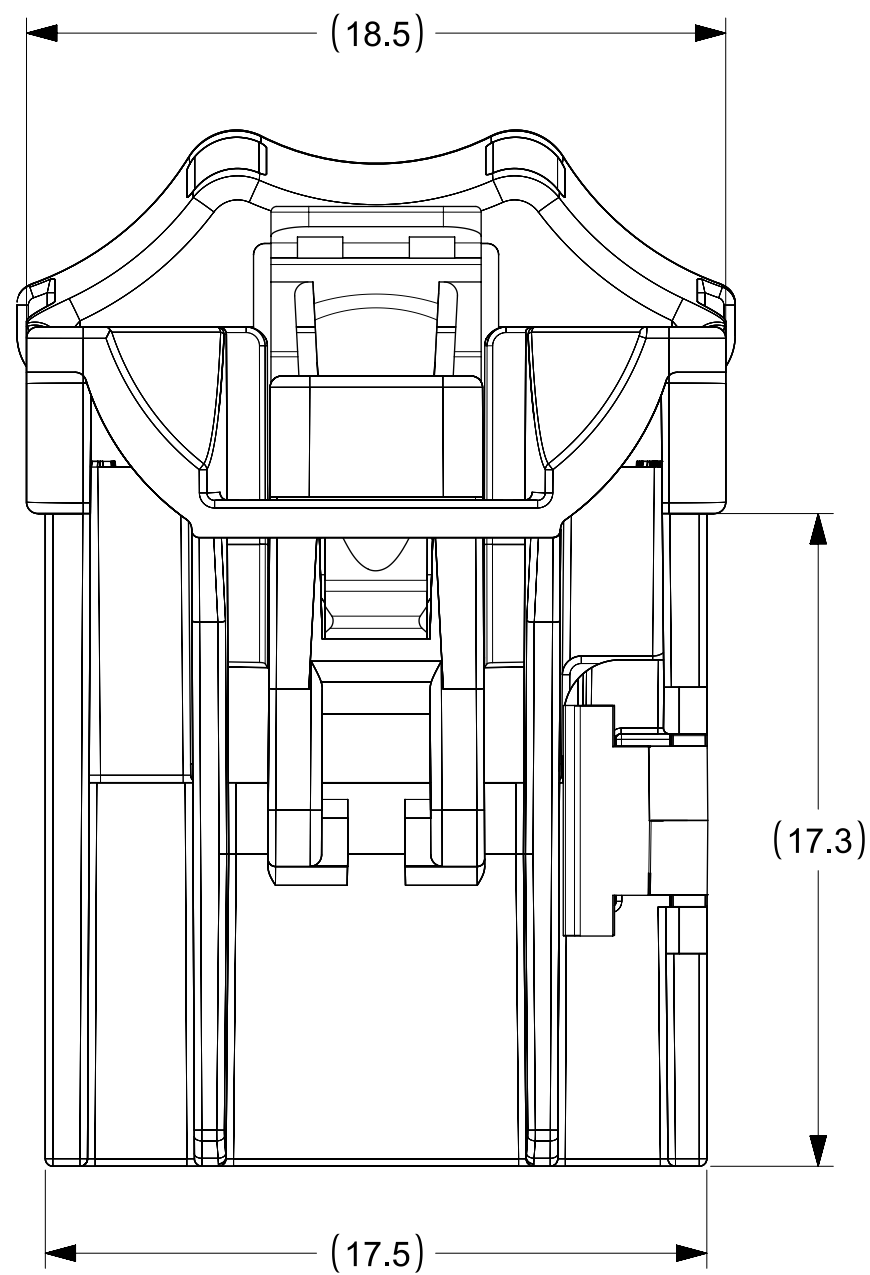
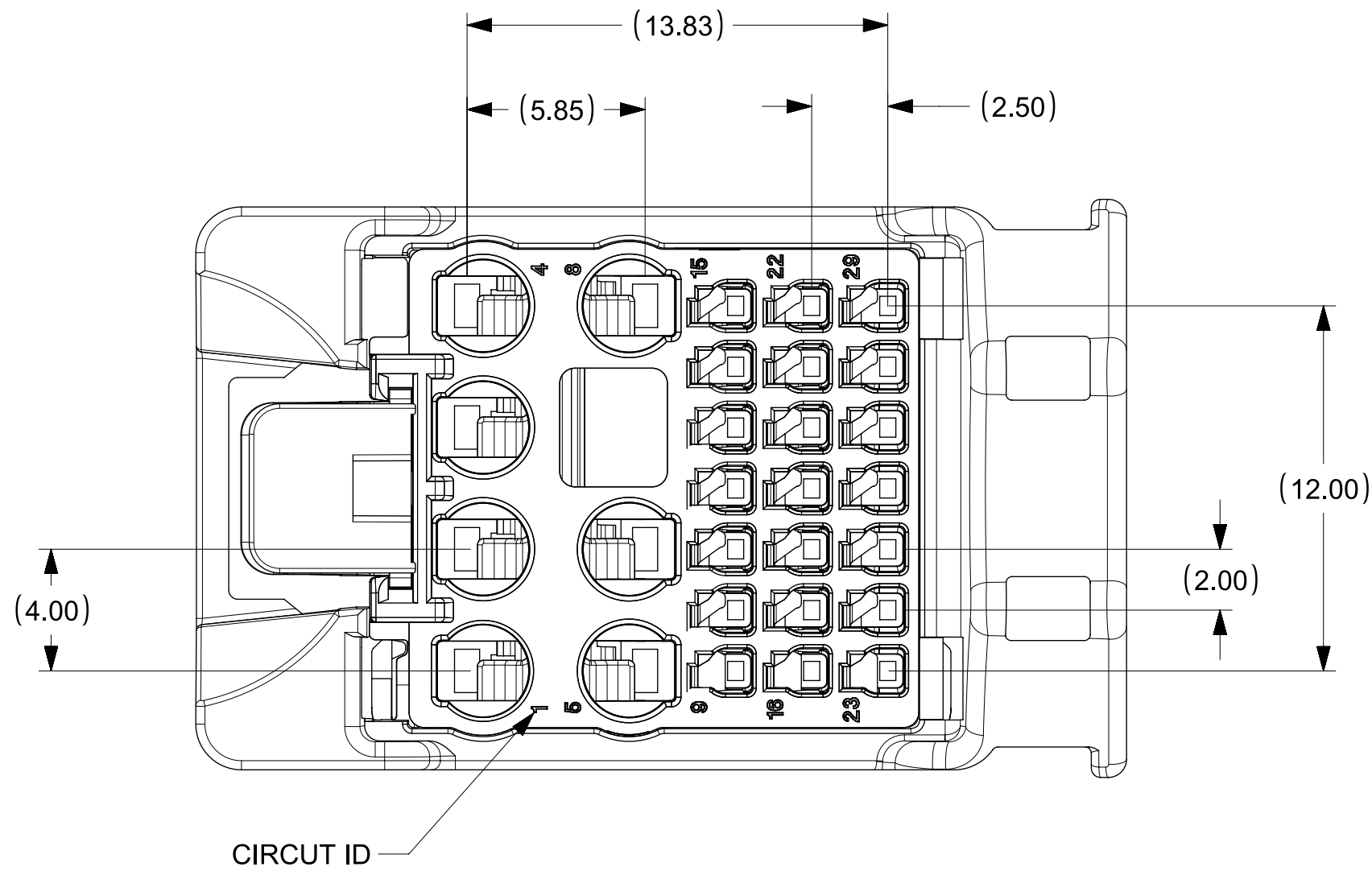
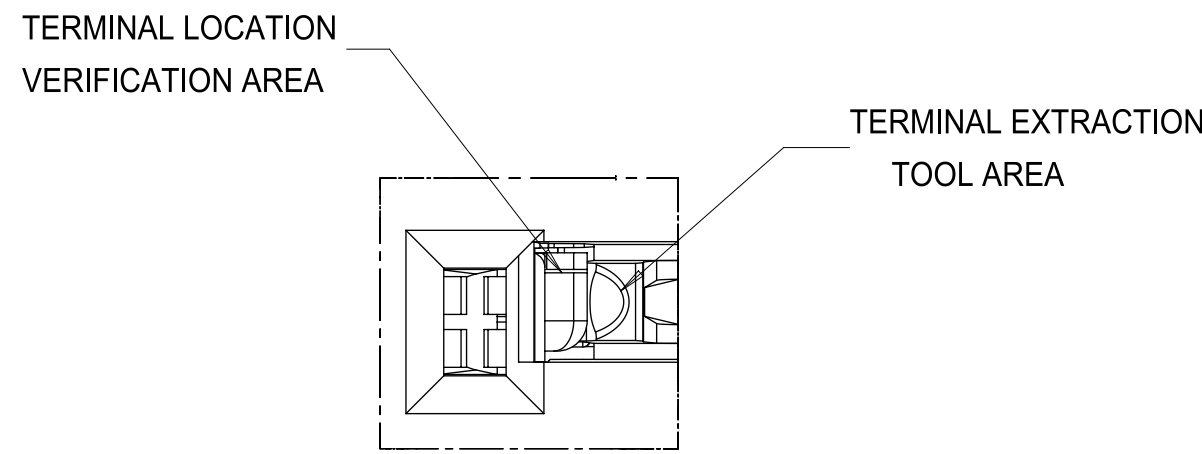
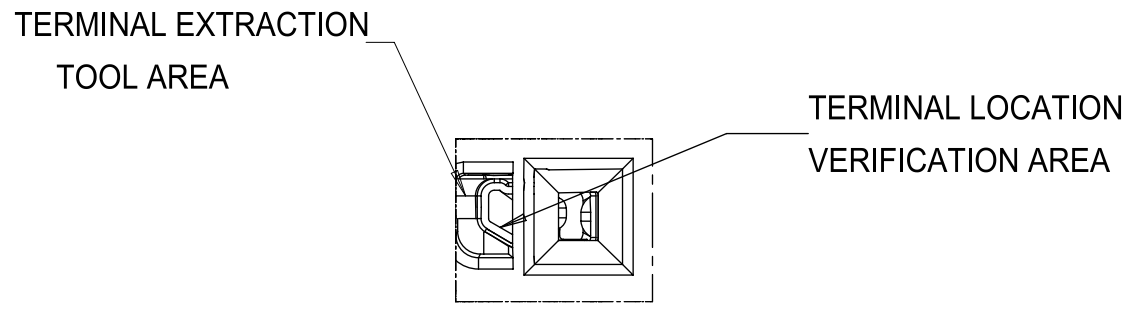
|    |   |
|----|---|
| B3 | UPDATED DELPHI 1.2<br>TERMINAL PNS                                |
| B2 | UPDATED WIRE GAGE RANGE OF<br>1.20MM TERMINAL<br>HTGUO 02/20/2019 |
| B1 | REV BLOCK CORRECTION<br>JJOYA 1/22/2018                           |
| B  | ADDED VIEWS FOR 27WAY<br>AND UPDATED BOM<br>JJOYA 12/19/2017      |
| A1 | SAP # 10816434<br>VYARAPPA 03/23/2017                             |
| A  | UAU2017-0137<br>SAP # 10789287<br>JCONDON 08/13/2016              |
| 7  | UAU2016-1182<br>SAP # 10762453<br>JCONDON 02/08/2016              |
| 6  | UAU2015-1899<br>SAP # 10698159<br>JCONDON 06/17/2015              |
| 5  | UAU2015-1606<br>SAP # 10685685<br>JCONDON 04/23/2015              |
| 4  | UAU2015-0824<br>SAP # XXXXXX<br>JCONDON 12/05/2014                |
| 3  | UAU2014-1923<br>SAP # XXXXXXXXX<br>BSCUDDER 05/19/2014            |
| 2  | UAU2014-1726<br>SAP # XXXXXXXXX<br>CBOWDEN 10/22/2013             |
| 1  | UAU2014-0633<br>SAP # XXXXXXXXX<br>KDEKOSKI 10/09/2013            |



|   |  |   |  |                             |                  |   |  |                            |          |                        |
|---|--|---|--|-----------------------------|------------------|---|--|----------------------------|----------|------------------------|
| THIS DRAWING CONTAINS INFORMATION THAT IS PROPRIETARY TO MOLEX ELECTRONIC TECHNOLOGIES, LLC AND SHOULD NOT BE USED WITHOUT WRITTEN PERMISSION |  |   |  |                             |                  |   |  |                            |          |                        |
| DIMENSION UNITS   |  | SCALE   |  | CURRENT REV DESC: SEE TABLE |                  | <div>molex</div> <div>28WAY STAK50H HYBRID CONNECTOR ASSEMBLY</div> |  |                            |          |                        |
| mm  |  |   |  |                             |                  |   |  |                            |          |                        |
| GENERAL TOLERANCES (UNLESS SPECIFIED)   |  | EC NO: 622293<br>DRWN: HTGUO02 2019/08/13<br>CHK'D: JCONDON 2019/08/13<br>APPR: JCONDON 2019/08/13              |  |                             |                  | PRODUCT CUSTOMER DRAWING  |  |                            |          |                        |
| ANGULAR TOL ± 3.0°  |  |   |  |                             |                  |   |  |                            |          |                        |
| 4 PLACES ±  |  |   |  |                             |                  |   |  |                            |          |                        |
| 3 PLACES ±  |  |   |  |                             |                  |   |  |                            |          |                        |
| 2 PLACES ± 0.3  |  |   |  |                             |                  |   |  |                            |          |                        |
| 1 PLACE ± 0.3   |  | INITIAL REVISION:<br>DRWN: VYARAPPA 2017/02/06<br>APPR: KDEKOSKI 2017/03/23                                     |  |                             |                  | DOCUMENT NUMBER   |  | DOC TYPE                   | DOC PART | REVISION               |
| 0 PLACES ± 0.3  |  |   |  |                             |                  | SD-160014-0001  |  | PSD                        | 000      | B3                     |
| DRAFT WHERE APPLICABLE MUST REMAIN WITHIN DIMENSIONS  |  | THIRD ANGLE PROJECTION<br> |  | DRAWING<br>D-SIZE           | SERIES<br>160014 | MATERIAL NUMBER<br>SEE CHART  |  | CUSTOMER<br>GENERAL MARKET |          | SHEET NUMBER<br>1 OF 2 |

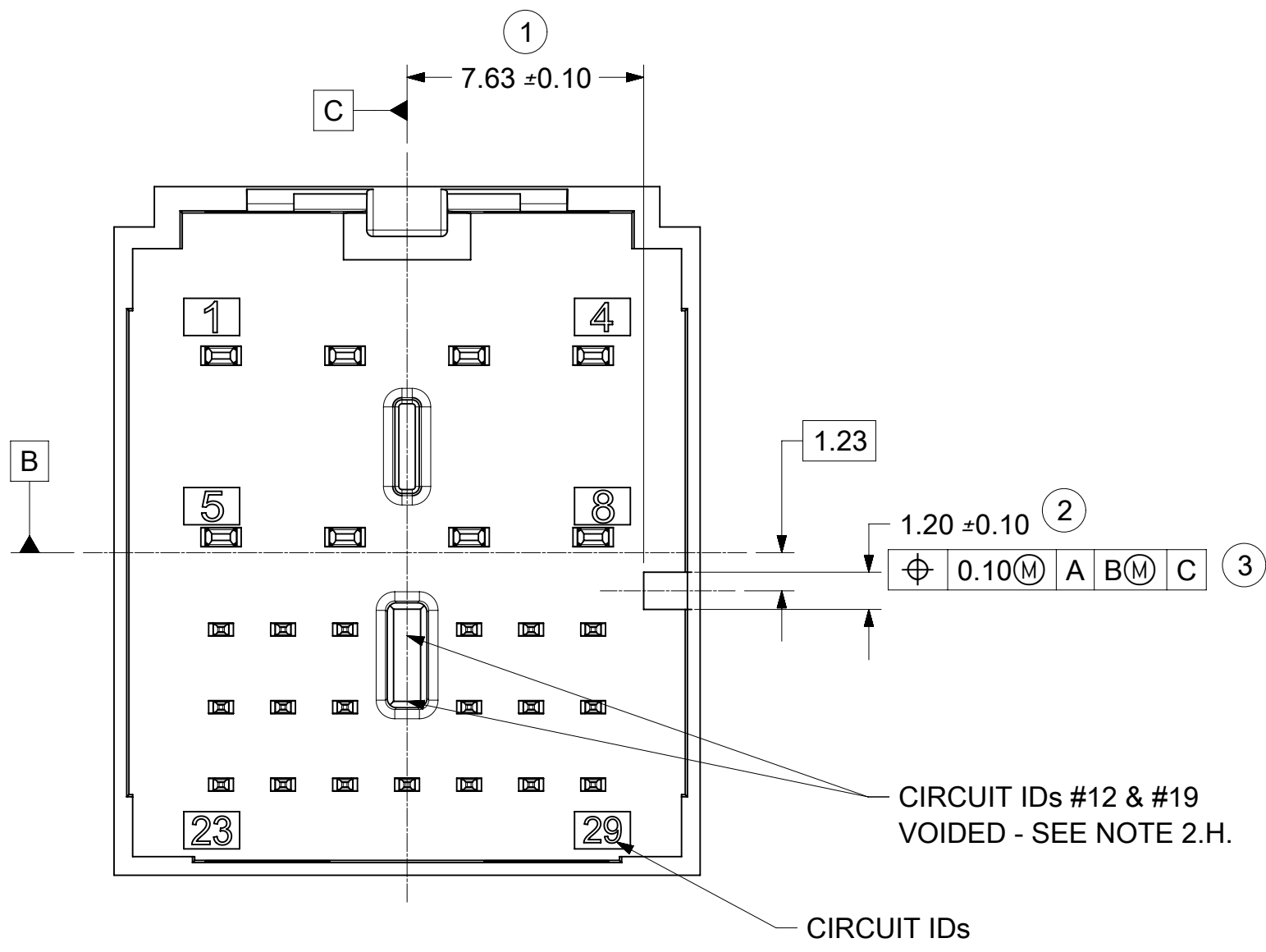
| MOLEX ASSEMBLY<br>PART NO.'S | CIRCUIT<br>COUNT | KEY | OUTER<br>SHROUD<br>COLOR | COMPONENTS            |                       |                       |                       |                  |            |            |
|------------------------------|------------------|-----|--------------------------|-----------------------|-----------------------|-----------------------|-----------------------|------------------|------------|------------|
|                              |                  |     |                          | OUTER SHROUD<br>KEY 1 | OUTER SHROUD<br>KEY 2 | OUTER SHROUD<br>KEY 3 | OUTER SHROUD<br>KEY 4 | INNER<br>HOUSING | ISL        | CPA        |
|                              |                  |     |                          | SPS/PA66-GF20         | SPS/PA66-GF20         | SPS/PA66-GF20         | SPS/PA66-GF20         | SPS/PA66-GF20    | SPS-GF30   | PA66-GF50  |
|                              |                  |     |                          | 1600140501            | 1600140502            | 1600140503            | 1600140504            | 1600140701       | 1600140601 | 1600140703 |
| 1600140001                   | 28               | 1   | DARK GRAY                | 1                     |                       |                       |                       | STONE GRAY       | 1          | 1          |
| 1600140002                   | 28               | 2   | LT GREEN A               |                       | 1                     |                       |                       | STONE GRAY       | 1          | 1          |
| 1600140003                   | 28               | 3   | LT GRAY                  |                       |                       | 1                     |                       | STONE GRAY       | 1          | 1          |
| 1600140004                   | 28               | 4   | BLACK                    |                       |                       |                       | 1                     | STONE GRAY       | 1          | 1          |
|                              |                  |     |                          | 1600290501            | 1600290502            | 1600290503            | 1600290504            | 1600290701       | 1600290601 | 1600140703 |
| 1600290001                   | 27               | 1   | BLACK                    | 1                     |                       |                       |                       | DARK GRAY        | 1          | 1          |
| 1600290002                   | 27               | 2   | LT GREEN B               |                       | 1                     |                       |                       | DARK GRAY        | 1          | 1          |
| 1600290003                   | 27               | 3   | LT BLUE B                |                       |                       | 1                     |                       | DARK GRAY        | 1          | 1          |
| 1600290004                   | 27               | 4   | PURPLE C                 |                       |                       |                       | 1                     | DARK GRAY        | 1          | 1          |

|                 |    |              |            |          |
|-----------------|----|--------------|------------|----------|
| DOCUMENT STATUS | P1 | RELEASE DATE | 2019/08/13 | 14:53:52 |
|-----------------|----|--------------|------------|----------|

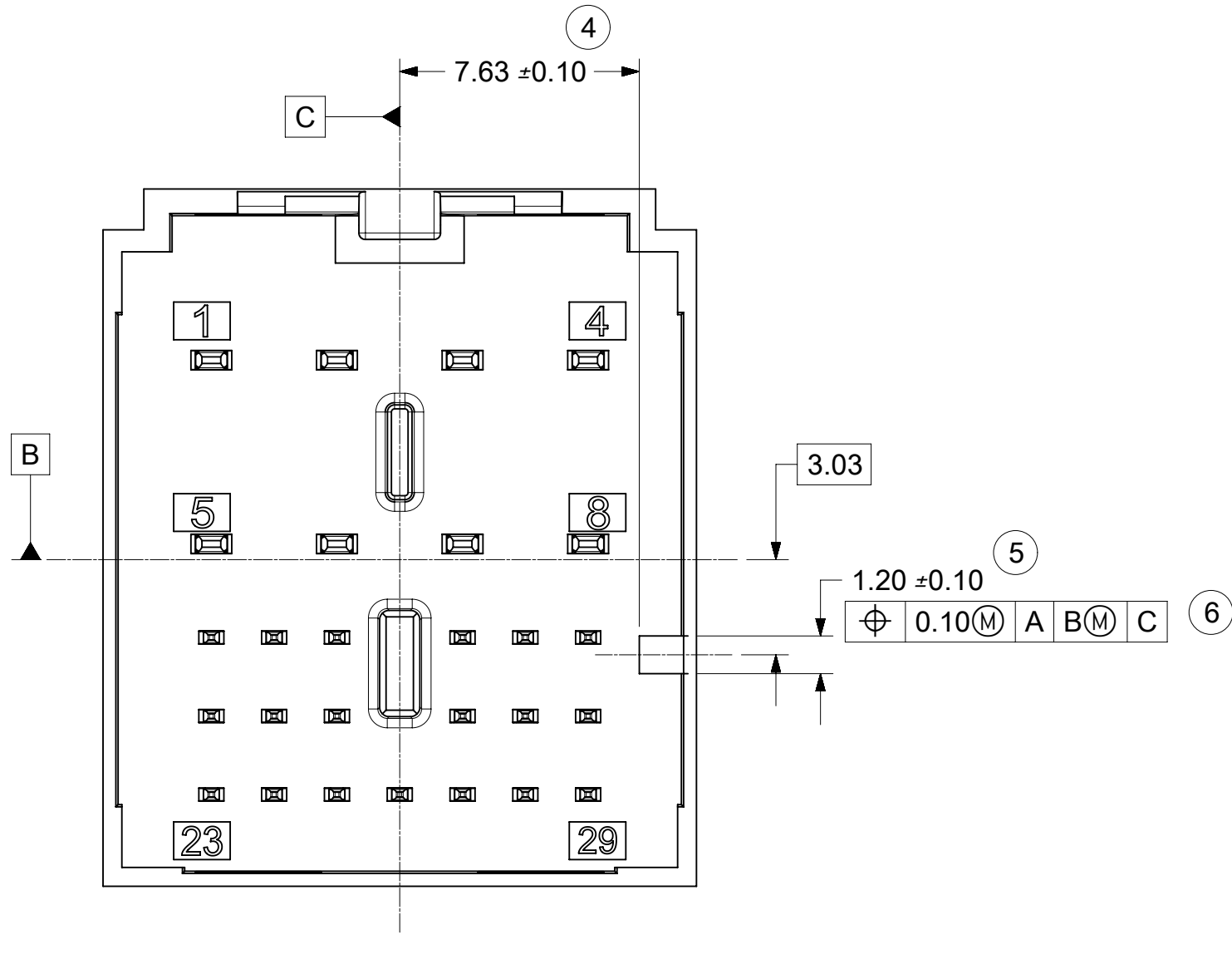
NOTE: 28WAY CONNECTOR VARIANT SHOWN.  
DIMENSIONS APPLY TO ALL CONNECTOR VARIANTS OF 29WAY



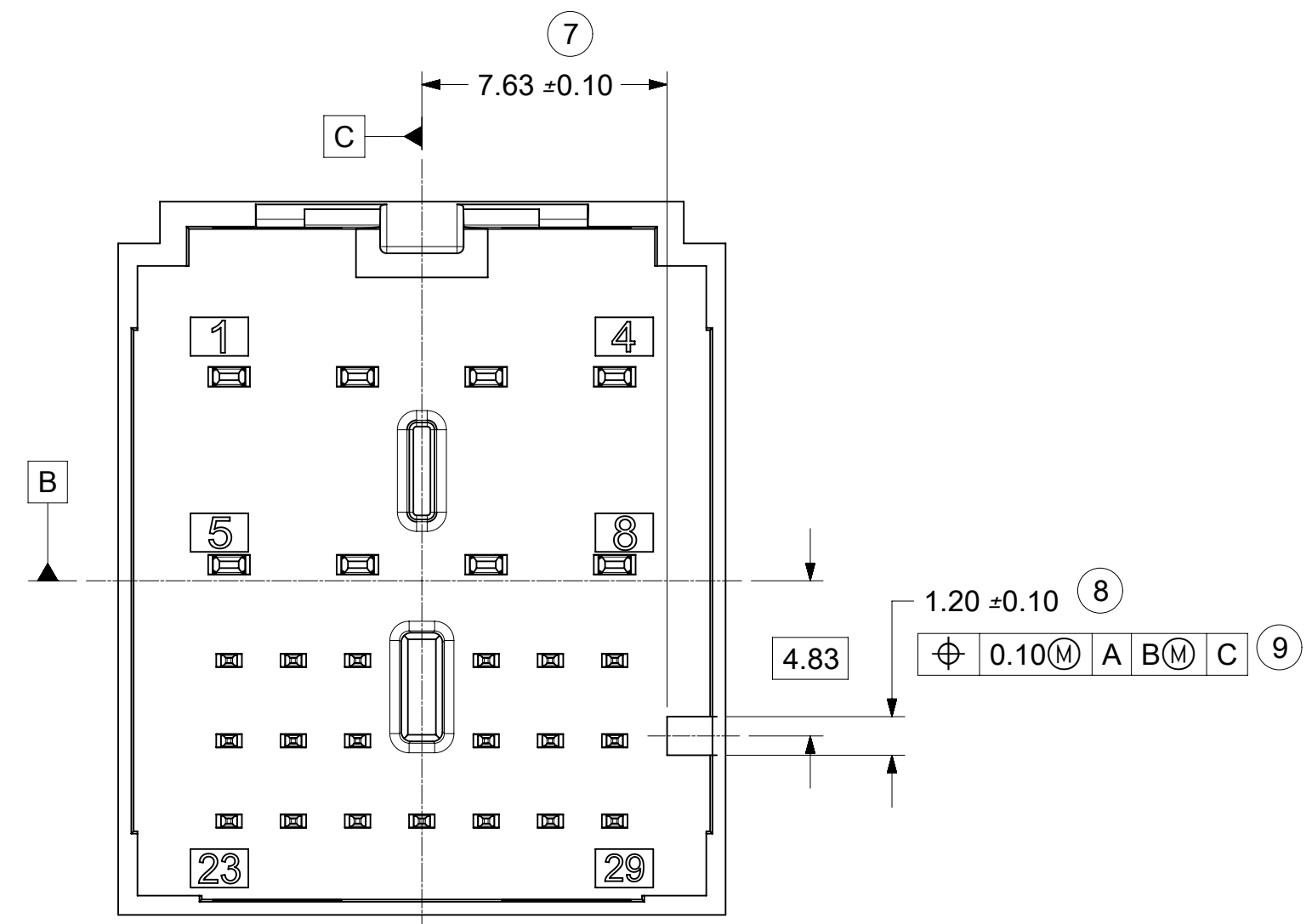
| THIS DRAWING CONTAINS INFORMATION THAT IS PROPRIETARY TO MOLEX ELECTRONIC TECHNOLOGIES, LLC AND SHOULD NOT BE USED WITHOUT WRITTEN PERMISSION |  |       |   |   |            |                 |   |                |              |
|---|--|-------|---|---|------------|-----------------|---|----------------|--------------|
| DIMENSION UNITS   |  | SCALE | CURRENT REV DESC: SEE TABLE   |   |            |                 | <div>molex</div> <div>28WAY STAK50H HYBRID CONNECTOR ASSEMBLY</div> |                |              |
| mm  |  |       |   |   |            |                 |   |                |              |
| GENERAL TOLERANCES (UNLESS SPECIFIED)   |  |       |   |   |            |                 |   |                |              |
| ANGULAR TOL ± 3.0 °   |  |       | EC NO: 622293   |   |            |                 |   |                |              |
| 4 PLACES  |  | ±     | DRWN: HTGU002   |   | 2019/08/13 |                 |   |                |              |
| 3 PLACES  |  | ±     | CHK'D: JCONDON  |   | 2019/08/13 |                 |   |                |              |
| 2 PLACES  |  | ± 0.3 | APPR: JCONDON   |   | 2019/08/13 |                 | PRODUCT CUSTOMER DRAWING  |                |              |
| 1 PLACE   |  | ± 0.3 | INITIAL REVISION:   |   |            | DOCUMENT NUMBER | DOC TYPE  | DOC PART       | REVISION     |
| 0 PLACES  |  | ± 0.3 | DRWN: VYARAPPA  |   | 2017/02/06 |                 | SD-160014-0001  |                | PSD          |
|   |  |       | APPR: KDEKOSKI  |   | 2017/03/23 |                 | 000   |                | B3           |
| DRAFT WHERE APPLICABLE MUST REMAIN WITHIN DIMENSIONS  |  |       | THIRD ANGLE PROJECTION  | DRAWING   | SERIES     | MATERIAL NUMBER | CUSTOMER  |                | SHEET NUMBER |
|   |  |       |  |  | D-SIZE     | 160014          | SEE CHART   | GENERAL MARKET | 2 OF 2       |



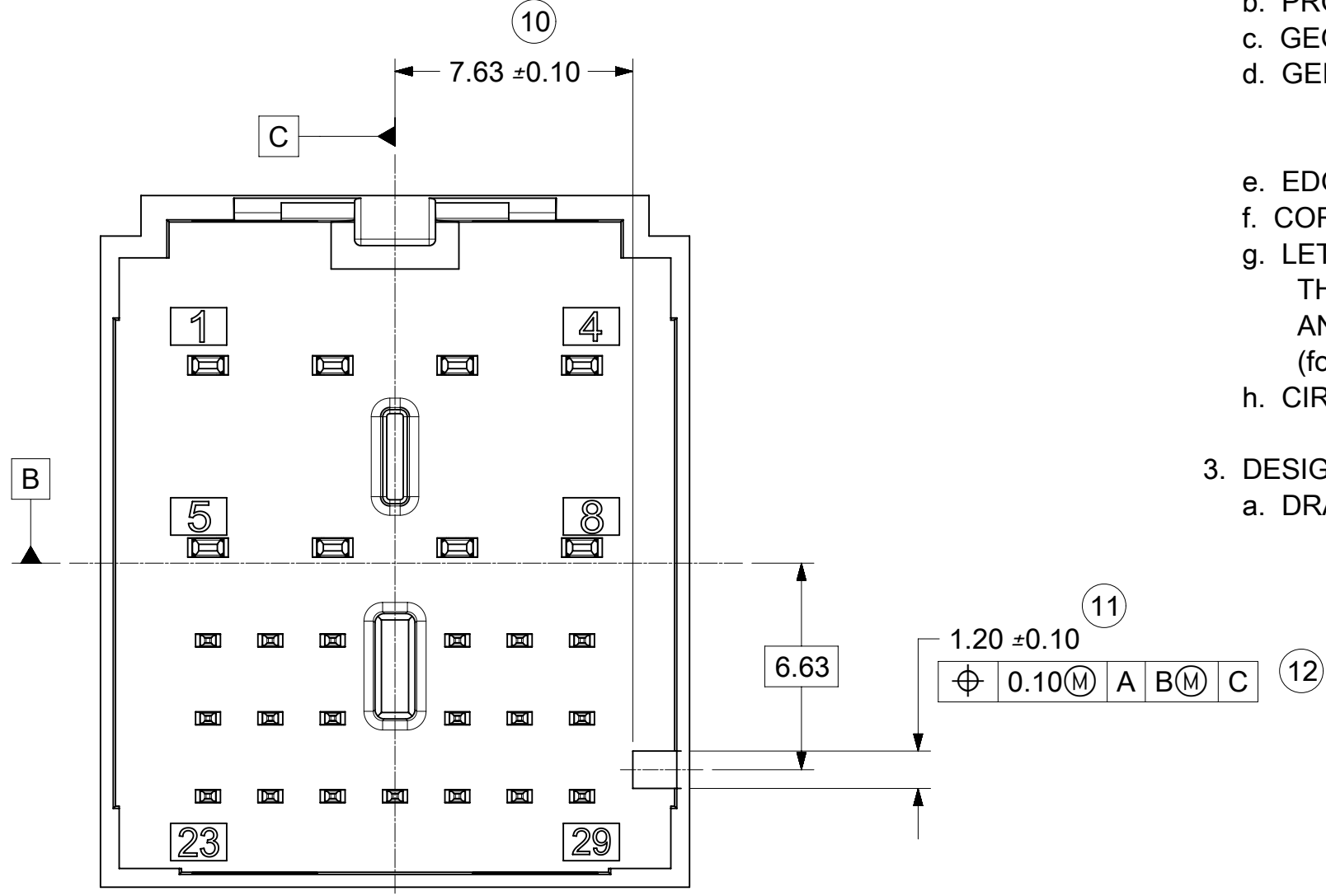
INTERFACE KEY #1  
MATING CONNECTOR COLOR: BLACK



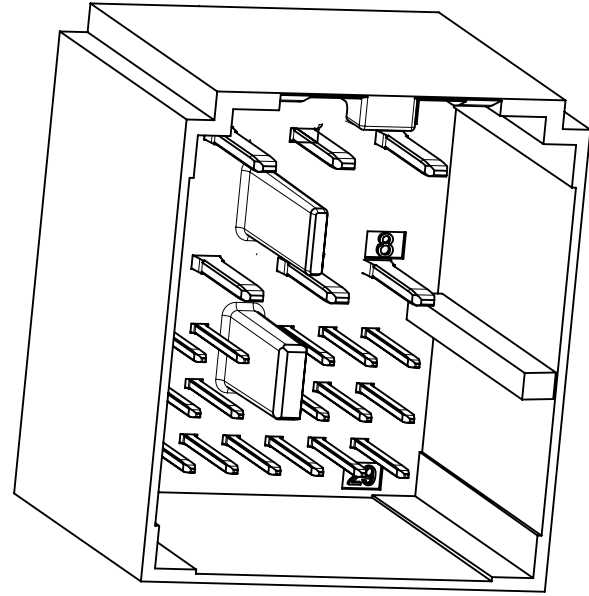
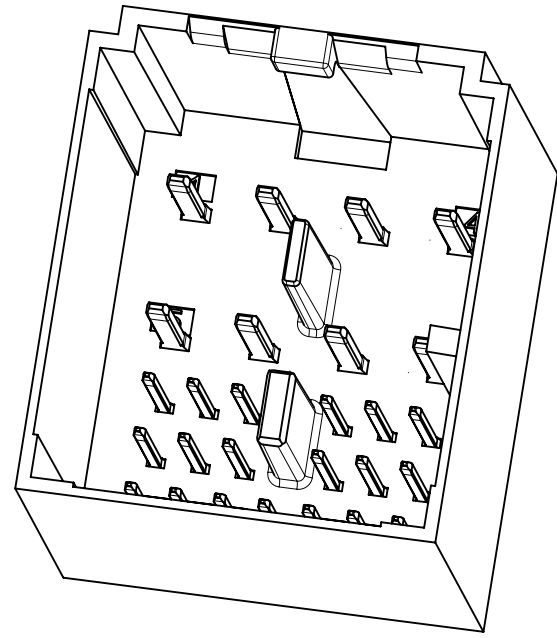
INTERFACE KEY #2  
MATING CONNECTOR COLOR: LT GREEN B



INTERFACE KEY #3  
MATING CONNECTOR COLOR: LT BLUE B



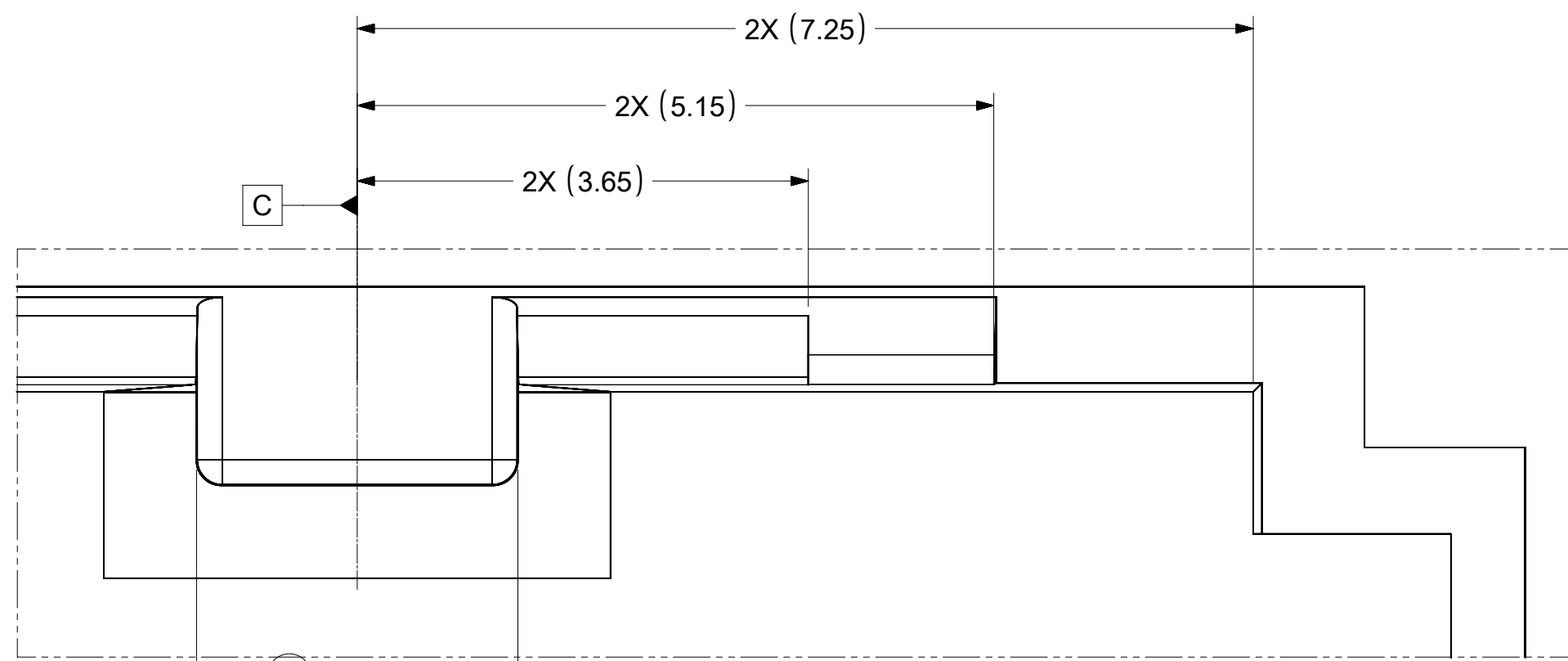
INTERFACE KEY #4  
MATING CONNECTOR COLOR: PURPLE C



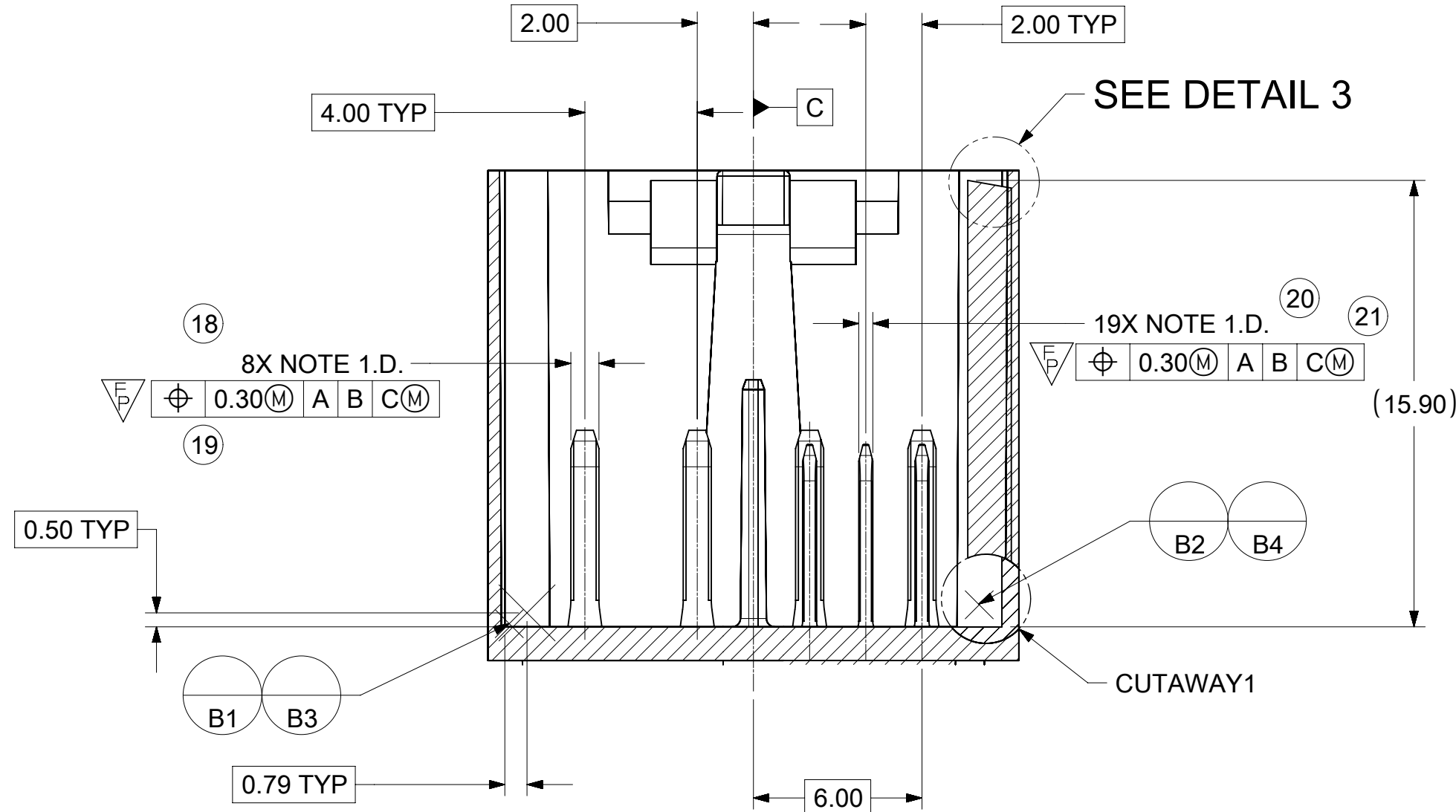
- NOTES: VALID UNLESS OTHERWISE SPECIFIED
- DESIGN - MATERIALS:
    - RESIN MATERIAL: PBT+GF30 OR SPS+GF30 OR EQUIVALENT
    - PIN/BLADE MATERIAL: ACCORDING TO USCAR DRAWING EWCAP-001 NOTE B2.
    - PLATING: ACCORDING TO USCAR DRAWING EWCAP-001 TIN REFLOW WITH UNDERPLATE.
    - PIN TIPS ACCORDING TO USCAR DRAWING EWCAP-001 (120-T002 AND 050-T001)
    - DEVIATION TO EWCAP-001 ACCEPTABLE IF PERFORMANCE(ELECTRICAL/MECHANICAL)IS SHOWN TO BE EQUAL OR BETTER AS REQUIRED BY VALIDATION TESTING.
  - DESIGN - GEOMETRY:
    - ALL GRAPHIC DATA IS BASIC (NO TOLERANCE) AND MUST BE TAKEN FROM THE DATA FILE AT ITS LATEST REVISION.
    - PRODUCT DESIGN MODEL NUMBER(S): SEE BOM TABLE
    - GEOMETRIC DIMENSIONS AND TOLERANCES PER ASME Y14.5M-2009
    - GENERAL TOLERANCES:  
LINEAR: PER DIN 16901 LINEAR CODE B FOR PRECISION ENGINEERING  
ANGULAR: ± 3°
    - EDGES AND UNDIMENSIONED DETAILS PER ISO13715
    - CORNERS SHOWN AS SHARP TO BE R 0.2 MAX.
    - LETTERING SHALL BE 0.15 MAX RAISED IN 0.25 MAX RECESS PAD.  
THIS INCLUDES RECYCLING CODE, CAVITY ID, VENDOR IDENTIFICATION, AND CUSTOMER MATERIAL NUMBER.  
(for small parts: LETTERING SHALL BE 0.10 MAX RAISED IN 0.15 MAX RECESS PAD)
    - CIRCUIT LOCATIONS 12 AND 19 VOIDED FOR 27WAY INTERFACE
  - DESIGN - MANUFACTURING:
    - DRAFT TO BE WITHIN TOLERANCE.

|     |   |
|-----|---|
| B1  | ADDED BALLOONS<br>JCONDON 08/02/2018                  |
| B   | REMOVED 0.2MM FROM<br>CONNECTOR LOCK TAB<br>FEATURE   |
| A1  | NOTE 1.E. ADDED<br>JCONDON 11/13/2017                 |
| A   | NX-REMASTERING<br>SAP # 10867412                      |
| 9   | UAU2016-1182<br>SAP # 10762453<br>JCONDON 02/08/2016  |
| 8   | UAU2016-0542<br>SAP # 10728331<br>JCONDON 10/20/2015  |
| 7   | UAU2015-1446<br>SAP # 10681629<br>JCONDON 03/25/2015  |
| 6   | UAU2015-1212<br>SAP # 10674908<br>JCONDON 02/06/2015  |
| 5   | UAU2015-1036<br>SAP # 10670355<br>JCONDON 01/07/2015  |
| 4   | UAU2015-0634<br>SAP # 10661788<br>JCONDON 10/22/2014  |
| 3   | UAU2014-1679<br>SAP # XXXXXXXX<br>JCONDON 03/17/2014  |
| 2   | UAU2014-1221<br>SAP # XXXXXXXX<br>MYOUNG01 01/31/2014 |
| 1   | UAU2014-0715<br>SAP # XXXXXXXX<br>DAHALL 11/20/2013   |
| REV | DESCRIPTION   |

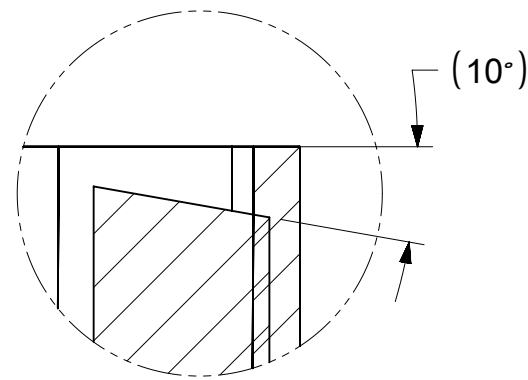
| SYMBOLS   | THIS DRAWING CONTAINS INFORMATION THAT IS PROPRIETARY TO MOLEX ELECTRONIC TECHNOLOGIES, LLC AND SHOULD NOT BE USED WITHOUT WRITTEN PERMISSION |  |  |  |  |  |  |  |  |  |
|---|---|--|--|--|--|--|--|--|--|--|
| <div><div><div><div><div></div><div></div><div></div><div></div><div></div><div></div><div></div><div></div><div></div><div></div><div></div><div></div><div></div><div></div><div></div><div></div><div></div><div></div><div></div><div></div><div></div><div></div><div></div><div></div><div></div><div></div><div></div><div></div><div></div><div></div><div></div><div></div><div></div><div></div><div></div><div></div><div></div><div></div><div></div><div></div><div></div><div></div><div></div><div></div><div></div><div></div><div></div><div></div><div></div><div></div><div></div><div></div><div></div><div></div><div></div><div></div><div></div><div></div><div></div><div></div><div></div><div></div><div></div><div></div><div></div><div></div><div></div><div></div><div></div><div></div><div></div><div></div><div></div><div></div><div></div><div></div><div></div><div></div><div></div><div></div><div></div><div></div><div></div><div></div><div></div><div></div><div></div><div></div><div></div><div></div><div></div><div></div><div></div><div></div><div></div><div></div><div></div><div></div><div></div><div></div><div></div><div></div><div></div><div></div><div></div><div></div><div></div><div></div><div></div><div></div><div></div><div></div><div></div><div></div><div></div><div></div><div></div><div></div><div></div><div></div><div></div><div></div><div></div><div></div><div></div><div></div><div></div><div></div><div></div><div></div><div></div><div></div><div></div><div></div><div></div><div></div><div></div><div></div><div></div><div></div><div></div><div></div><div></div><div></div><div></div><div></div><div></div><div></div><div></div><div></div><div></div><div></div><div></div><div></div><div></div><div></div><div></div><div></div><div></div><div></div><div></div><div></div><div></div><div></div><div></div><div></div><div></div><div></div><div></div><div></div><div></div><div></div><div></div><div></div><div></div><div></div><div></div><div></div><div></div><div></div><div></div><div></div><div></div><div></div><div></div><div></div><div></div><div></div><div></div><div></div><div></div><div></div><div></div><div></div><div></div><div></div><div></div><div></div><div></div><div></div><div></div><div></div><div></div><div></div><div></div><div></div><div></div><div></div><div></div><div></div><div></div><div></div><div></div><div></div><div></div><div></div><div></div><div></div><div></div><div></div><div></div><div></div><div></div><div></div><div></div><div></div><div></div><div></div><div></div><div></div><div></div><div></div><div></div><div></div><div></div><div></div><div></div><div></div><div></div><div></div><div></div><div></div><div></div><div></div><div></div><div></div><div></div><div></div><div></div><div></div><div></div><div></div><div></div><div></div><div></div><div></div><div></div><div></div><div></div><div></div><div></div><div></div><div></div><div></div><div></div><div></div><div></div><div></div><div></div><div></div><div></div><div></div><div></div><div></div><div></div><div></div><div></div><div></div><div></div><div></div><div></div><div></div><div></div><div></div><div></div><div></div><div></div><div></div><div></div><div></div><div></div><div></div><div></div><div></div><div></div><div></div><div></div><div></div><div></div><div></div><div></div><div></div><div></div><div></div><div></div><div></div><div></div><div></div><div></div><div></div><div></div><div></div><div></div><div></div><div></div><div></div><div></div><div></div><div></div><div></div><div></div><div></div><div></div><div></div><div></div><div></div><div></div><div></div><div></div><div></div><div></div><div></div><div></div><div></div><div></div><div></div><div></div><div></div><div></div><div></div><div></div><div></div><div></div><div></div><div></div><div></div><div></div><div></div><div></div><div></div><div></div><div></div><div></div><div></div><div></div><div></div><div></div><div></div><div></div><div></div><div></div><div></div><div></div><div></div><div></div><div></div><div></div><div></div><div></div><div></div><div></div><div></div><div></div><div></div><div></div><div></div><div></div><div></div><div></div><div></div><div></div><div></div><div></div><div></div><div></div><div></div><div></div><div></div><div></div><div></div><div></div><div></div><div></div><div></div><div></div><div></div><div></div><div></div><div></div><div></div><div></div><div></div><div></div><div></div><div></div><div></div><div></div><div></div><div></div><div></div><div></div><div></div><div></div><div></div><div></div><div></div><div></div><div></div><div></div><div></div><div></div><div></div><div></div><div></div><div></div><div></div><div></div><div></div><div></div><div></div><div></div><div></div><div></div><div></div><div></div><div></div><div></div><div></div><div></div><div></div><div></div><div></div><div></div><div></div><div></div><div></div><div></div><div></div><div></div><div></div><div></div><div></div><div></div><div></div><div></div><div></div><div></div><div></div><div></div><div></div><div></div><div></div><div></div><div></div><div></div><div></div><div></div><div></div><div></div><div></div><div></div><div></div><div></div><div></div><div></div><div></div><div></div><div></div><div></div><div></div><div></div><div></div><div></div><div></div><div></div><div></div><div></div><div></div><div></div><div></div><div></div><div></div><div></div><div></div><div></div><div></div><div></div><div></div><div></div><div></div><div></div><div></div><div></div><div></div><div></div><div></div><div></div><div></div><div></div><div></div><div></div><div></div><div></div><div></div><div></div><div></div><div></div><div></div><div></div><div></div><div></div><div></div><div></div><div></div><div></div><div></div><div></div><div></div><div></div><div></div><div></div><div></div><div></div><div></div><div></div><div></div><div></div><div></div><div></div><div></div><div></div><div></div><div></div><div></div><div></div><div></div><div></div><div></div><div></div><div></div><div></div><div></div><div></div><div></div><div></div><div></div><div></div><div></div><div></div><div></div><div></div><div></div><div></div><div></div><div></div><div></div><div></div><div></div><div></div><div></div><div></div><div></div><div></div><div></div><div></div><div></div><div></div><div></div><div></div><div></div><div></div><div></div><div></div><div></div><div></div><div></div><div></div><div></div><div></div><div></div><div></div><div></div><div></div><div></div><div></div><div></div><div></div><div></div><div></div><div></div><div></div><div></div><div></div><div></div><div></div><div></div><div></div><div></div><div></div><div></div><div></div><div></div><div></div><div></div><div></div><div></div><div></div><div></div><div></div><div></div><div></div><div></div><div></div><div></div><div></div><div></div><div></div><div></div><div></div><div></div><div></div><div></div><div></div><div></div><div></div><div></div><div></div><div></div><div></div><div></div><div></div><div></div><div></div><div></div><div></div><div></div><div></div><div></div><div></div><div></div><div></div><div></div><div></div><div></div><div></div><div></div><div></div><div></div><div></div><div></div><div></div><div></div><div></div><div></div><div></div><div></div><div></div><div></div><div></div><div></div><div></div><div></div><div></div><div></div><div></div><div></div><div></div><div></div><div></div><div></div><div></div><div></div><div></div><div></div><div></div><div></div><div></div><div></div><div></div><div></div><div></div><div></div><div></div><div></div><div></div><div></div><div></div><div></div><div></div><div></div><div></div><div></div><div></div><div></div><div></div><div></div><div></div><div></div><div></div><div></div><div></div><div></div><div></div><div></div><div></div><div></div><div></div><div></div><div></div><div></div><div></div><div></div><div></div><div></div><div></div><div></div><div></div><div></div><div></div><div></div><div></div><div></div><div></div><div></div><div></div><div></div><div></div><div></div><div></div><div></div><div></div><div></div><div></div><div></div><div></div><div></div><div></div><div></div><div></div><div></div><div></div><div></div><div></div><div></div><div></div><div></div><div></div><div></div><div></div><div></div><div></div><div></div><div></div><div></div><div></div><div></div><div></div><div></div><div></div><div></div><div></div><div></div><div></div><div></div><div></div><div></div><div></div><div></div><div></div><div></div><div></div><div></div><div></div><div></div><div></div><div></div><div></div><div></div><div></div><div></div><div></div><div></div><div></div><div></div><div></div><div></div><div></div><div></div><div></div><div></div><div></div><div></div><div></div><div></div><div></div><div></div><div></div><div></div><div></div><div></div><div></div><div></div><div></div><div></div><div></div><div></div><div></div><div></div><div></div><div></div><div></div><div></div><div></div><div></div><div></div><div></div><div></div><div></div><div></div><div></div><div></div><div></div><div></div><div></div><div></div><div></div><div></div><div></div><div></div><div></div><div></div><div></div><div></div><div></div><div></div><div></div><div></div><div></div><div></div><div></div><div></div><div></div><div></div><div></div><div></div><div></div><div></div><div></div><div></div><div></div><div></div><div></div><div></div><div></div><div></div><div></div><div></div><div></div><div></div><div></div><div></div><div></div><div></div><div></div><div></div><div></div><div></div><div></div><div></div><div></div><div></div><div></div><div></div><div></div><div></div><div></div><div></div><div></div><div></div><div></div><div></div><div></div><div></div><div></div><div></div><div></div><div></div><div></div><div></div><div></div><div></div><div></div><div></div><div></div><div></div><div></div><div></div><div></div><div></div><div></div><div></div><div></div><div></div><div></div><div></div><div></div><div></div><div></div><div></div><div></div><div></div><div></div><div></div><div></div><div></div><div></div><div></div><div></div><div></div><div></div><div></div><div></div><div></div><div></div><div></div><div></div><div></div><div></div><div></div><div></div><div></div><div></div><div></div><div></div><div></div><div></div><div></div><div></div><div></div><div></div><div></div><div></div><div></div><div></div><div></div><div></div><div></div><div></div><div></div><div></div><div></div><div></div><div></div><div></div><div></div><div></div><div></div><div></div><div></div><div></div><div></div><div></div><div></div><div></div><div></div><div></div><div></div><div></div><div></div><div></div><div></div><div></div><div></div><div></div><div></div><div></div><div></div><div></div><div></div><div></div><div></div><div></div><div></div><div></div><div></div><div></div><div></div><div></div><div></div><div></div><div></div><div></div><div></div><div></div><div></div><div></div><div></div><div></div><div></div><div></div><div></div><div></div><div></div><div></div><div></div><div></div><div></div><div></div><div></div><div></div><div></div><div></div><div></div><div></div><div></div><div></div><div></div><div></div><div></div><div></div><div></div><div></div><div></div><div></div><div></div><div></div><div></div><div></div><div></div><div></div><div></div><div></div><div></div><div></div><div></div><div></div><div></div><div></div><div></div><div></div><div></div><div></div><div></div><div></div><div></div><div></div><div></div><div></div><div></div><div></div><div></div><div></div><div></div><div></div><div></div><div></div><div></div><div></div><div></div><div></div><div></div><div></div><div></div><div></div><div></div><div></div><div></div><div></div><div></div><div></div><div></div><div></div><div></div><div></div><div></div><div></div><div></div><div></div><div></div><div></div><div></div><div></div><div></div><div></div><div></div><div></div><div></div><div></div><div></div><div></div><div></div><div></div><div></div><div></div><div></div><div></div><div></div><div></div><div></div><div></div><div></div><div></div><div></div><div></div><div></div><div></div><div></div><div></div><div></div><div></div><div></div><div></div><div></div><div></div><div></div><div></div><div></div><div></div><div></div><div></div><div></div><div></div><div></div><div></div><div></div><div></div><div></div><div></div><div></div><div></div><div></div><div></div><div></div><div></div><div></div><div></div><div></div><div></div><div></div><div></div><div></div><div></div><div></div><div></div><div></div><div></div><div></div><div></div><div></div><div></div><div></div><div></div><div></div><div></div><div></div><div></div><div></div><div></div><div></div><div></div><div></div><div></div><div></div><div></div><div></div><div></div><div></div><div></div><div></div><div></div><div></div><div></div><div></div><div></div><div></div><div></div><div></div><div></div><div></div><div></div><div></div><div></div><div></div><div></div><div></div><div></div><div></div><div></div><div></div><div></div><div></div><div></div><div></div><div></div><div></div><div></div><div></div><div></div><div></div><div></div><div></div><div></div><div></div><div></div><div></div><div></div><div></div><div></div><div></div><div></div><div></div><div></div><div></div><div></div><div></div><div></div><div></div><div></div><div></div><div></div><div></div><div></div><div></div><div></div><div></div><div></div><div></div><div></div><div></div><div></div><div></div><div></div><div></div><div></div><div></div><div></div><div></div><div></div><div></div><div></div><div></div><div></div><div></div><div></div><div></div><div></div><div></div><div></div><div></div><div></div><div></div><div></div><div></div><div></div><div></div><div></div><div></div><div></div><div></div><div></div><div></div><div></div><div></div><div></div><div></div><div></div><div></div><div></div><div></div><div></div><div></div><div></div><div></div><div></div><div></div><div></div><div></div><div></div><div></div><div></div><div></div><div></div><div></div><div></div><div></div><div></div><div></div><div></div><div></div><div></div><div></div><div></div><div></div><div></div><div></div><div></div><div></div><div></div><div></div><div></div><div></div><div></div><div></div><div></div><div></div><div></div><div></div><div></div><div></div><div></div><div></div><div></div><div></div><div></div><div></div><div></div><div></div><div></div><div></div><div></div><div></div><div></div><div></div><div></div><div></div><div></div><div></div><div></div><div></div><div></div><div></div><div></div><div></div><div></div><div></div><div></div><div></div><div></div><div></div><div></div><div></div><div></div><div></div><div></div><div></div><div></div><div></div><div></div><div></div><div></div><div></div><div></div><div></div><div></div><div></div><div></div><div></div><div></div><div></div><div></div><div></div><div></div><div></div><div></div><div></div><div></div><div></div><div></div><div></div><div></div><div></div><div></div><div></div><div></div><div></div><div></div><div></div><div></div><div></div><div></div><div></div><div></div><div></div><div></div><div></div><div></div><div></div><div></div><div></div><div></div><div></div><div></div><div></div><div></div><div></div><div></div><div></div><div></div><div></div><div></div><div></div><div></div><div></div><div></div><div></div><div></div><div></div><div></div><div></div><div></div><div></div><div></div><div></div><div></div><div></div><div></div><div></div><div></div><div></div><div></div><div></div><div></div><div></div><div></div><div></div><div></div><div></div><div></div><div></div><div></div><div></div><div></div><div></div><div></div><div></div><div></div><div></div><div></div><div></div><div></div><div></div><div></div><div></div><div></div><div></div><div></div><div></div><div></div><div></div></div></div></div></div> |   |  |  |  |  |  |  |  |  |  |



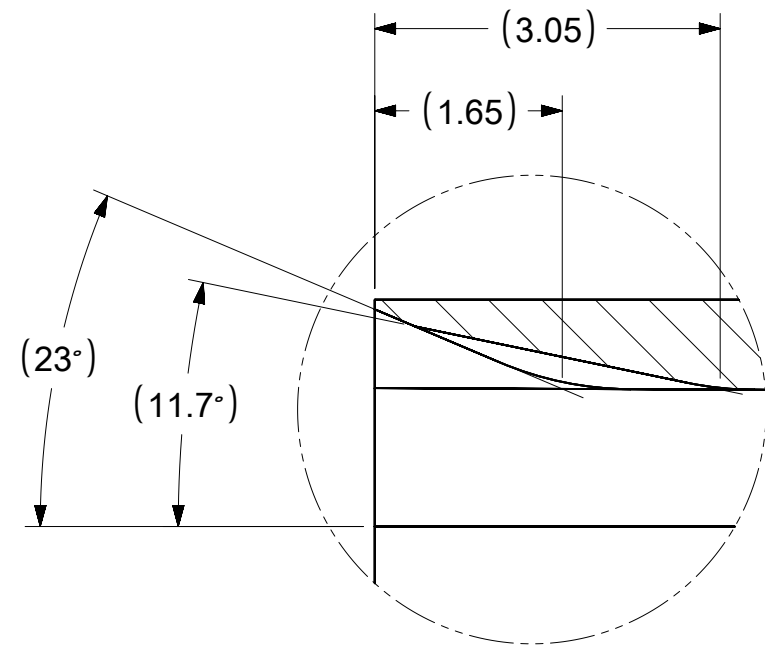
DETAIL 1  
SCALE 20:1



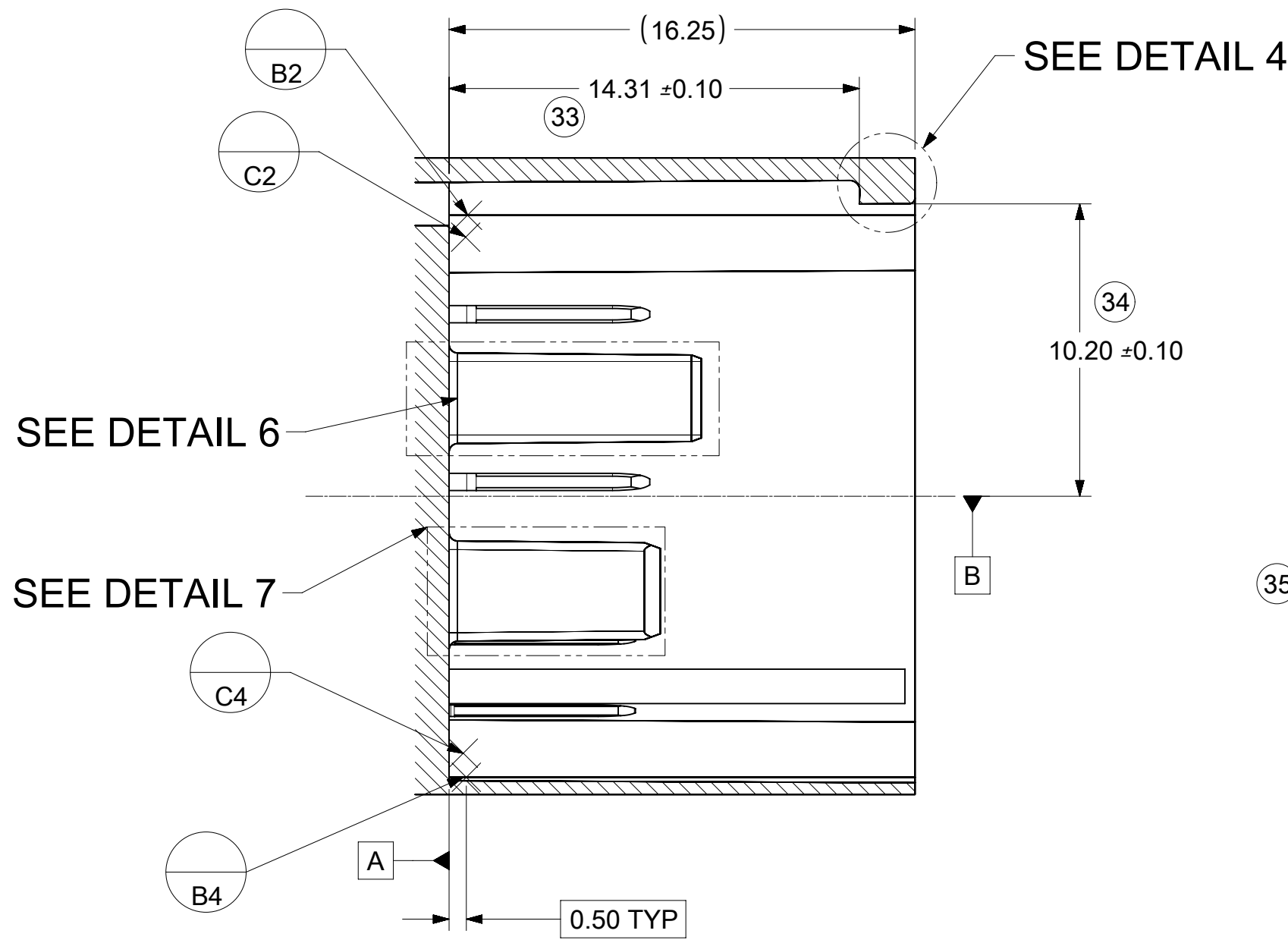
SECTION X-X



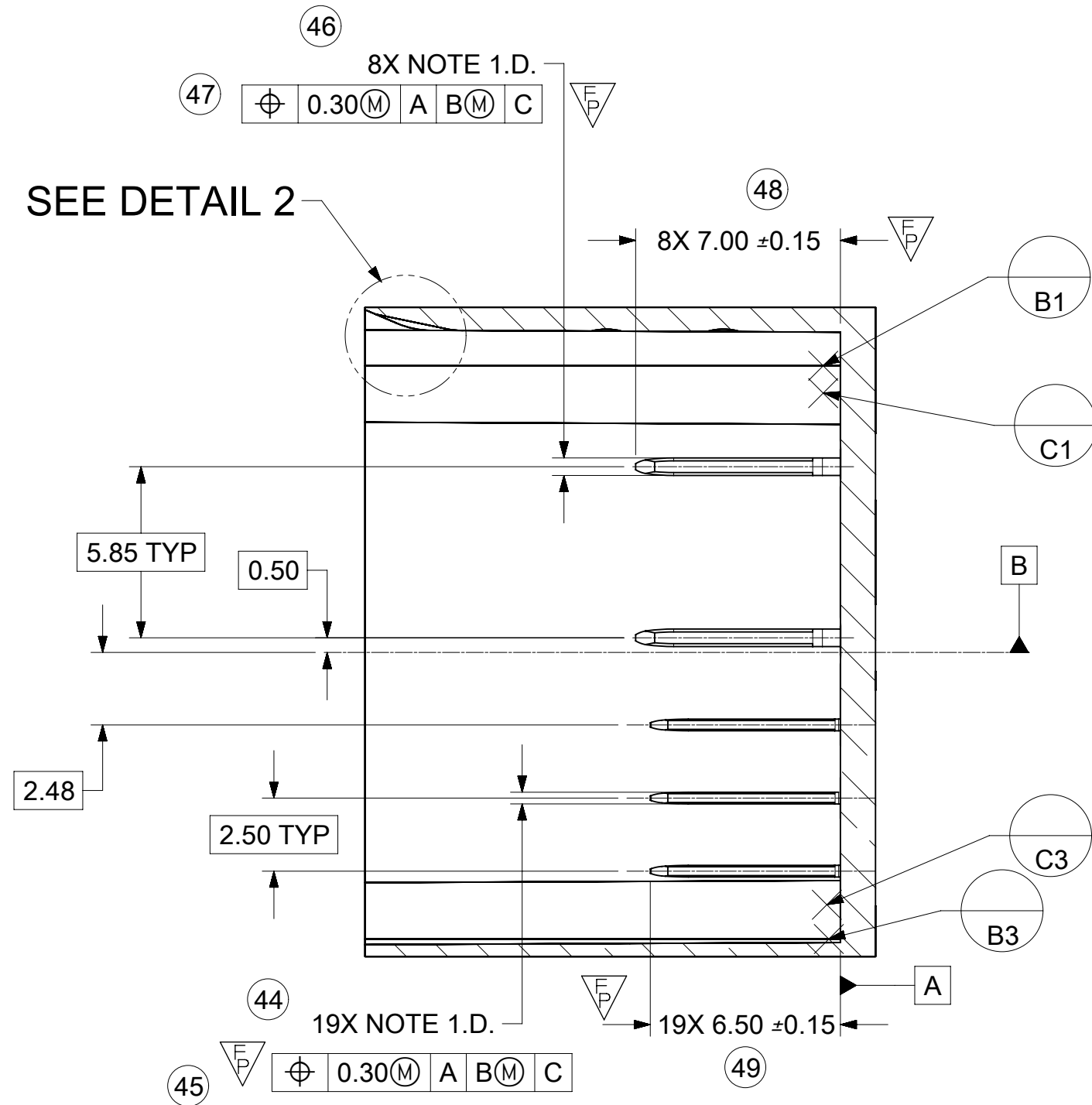
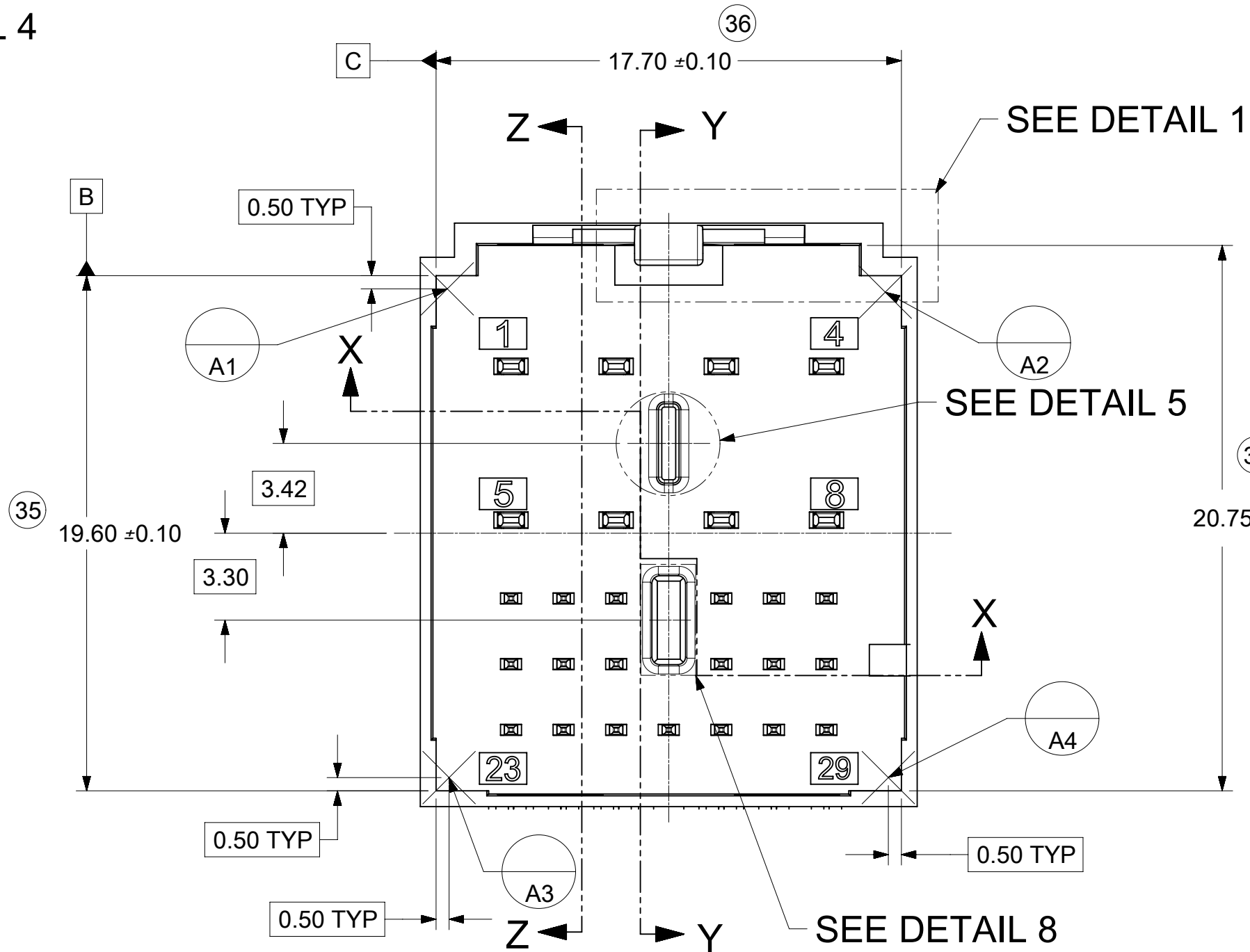
DETAIL 3  
SCALE 15:1



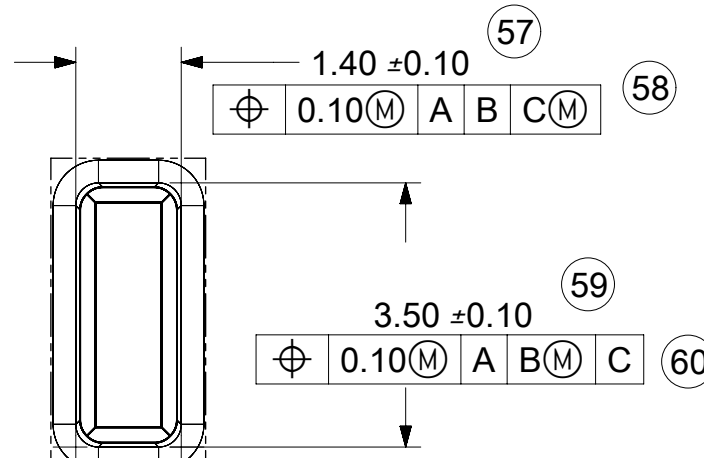
DETAIL 2  
SCALE 15:1



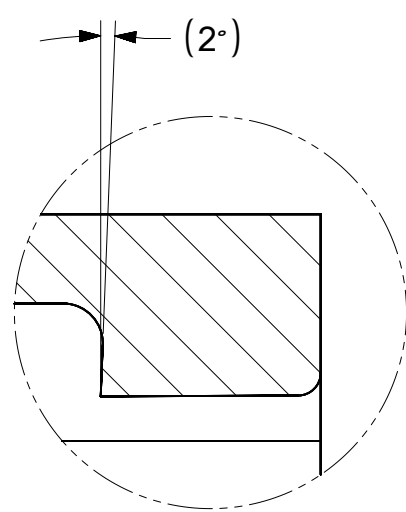
SECTION Y-Y



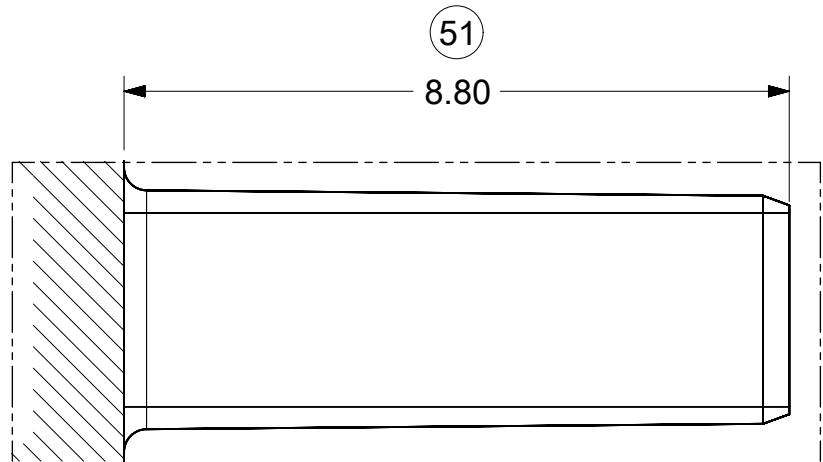
SECTION Z-Z



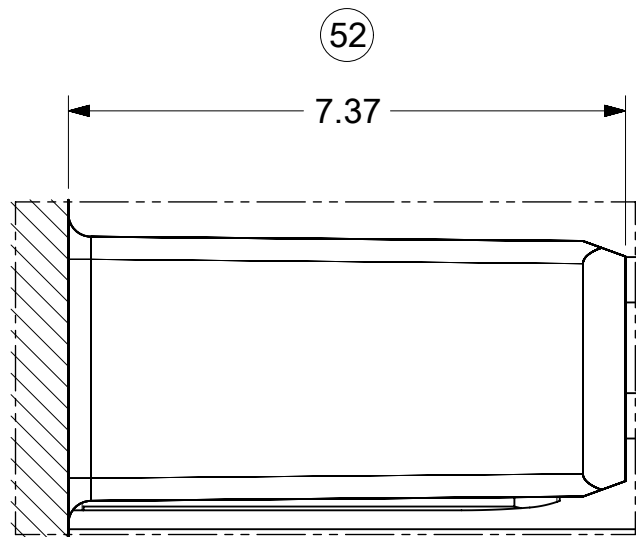
DETAIL 8  
SCALE 10:1



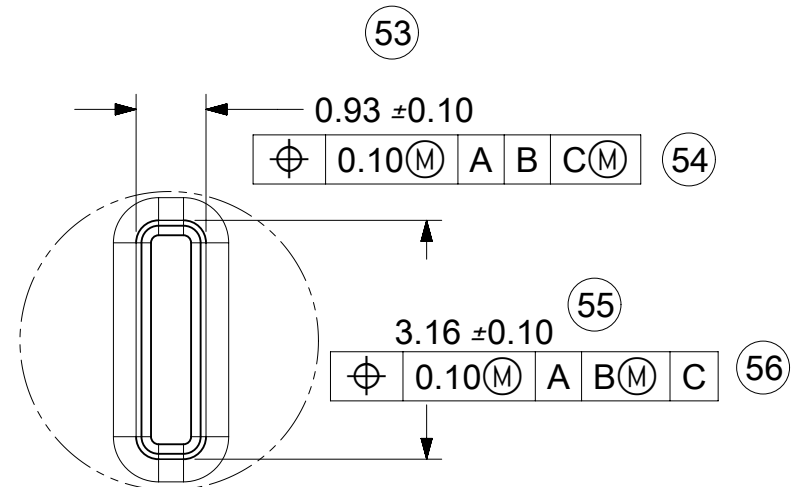
DETAIL 4  
SCALE 15:1



DETAIL 6  
SCALE 10:1



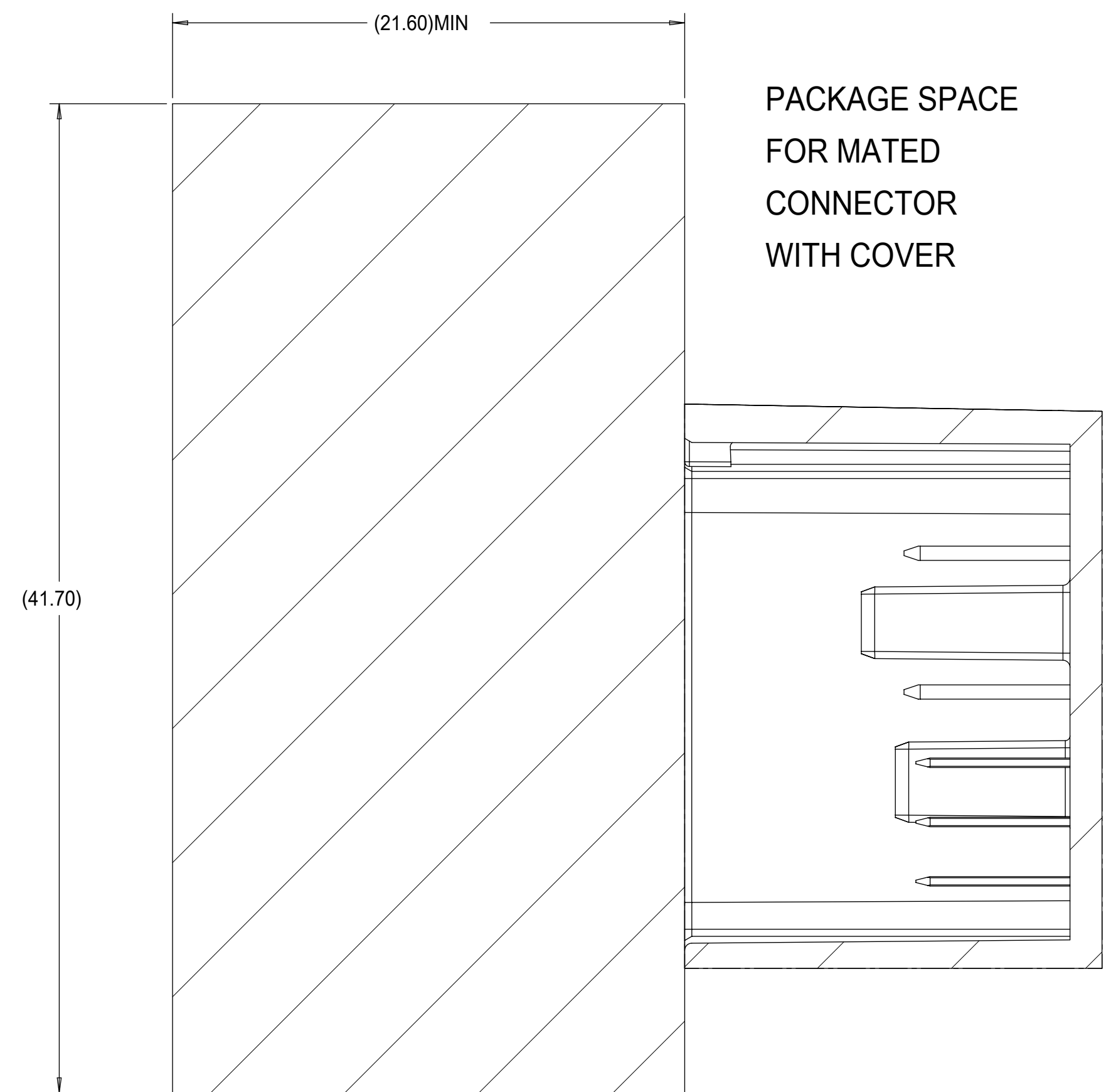
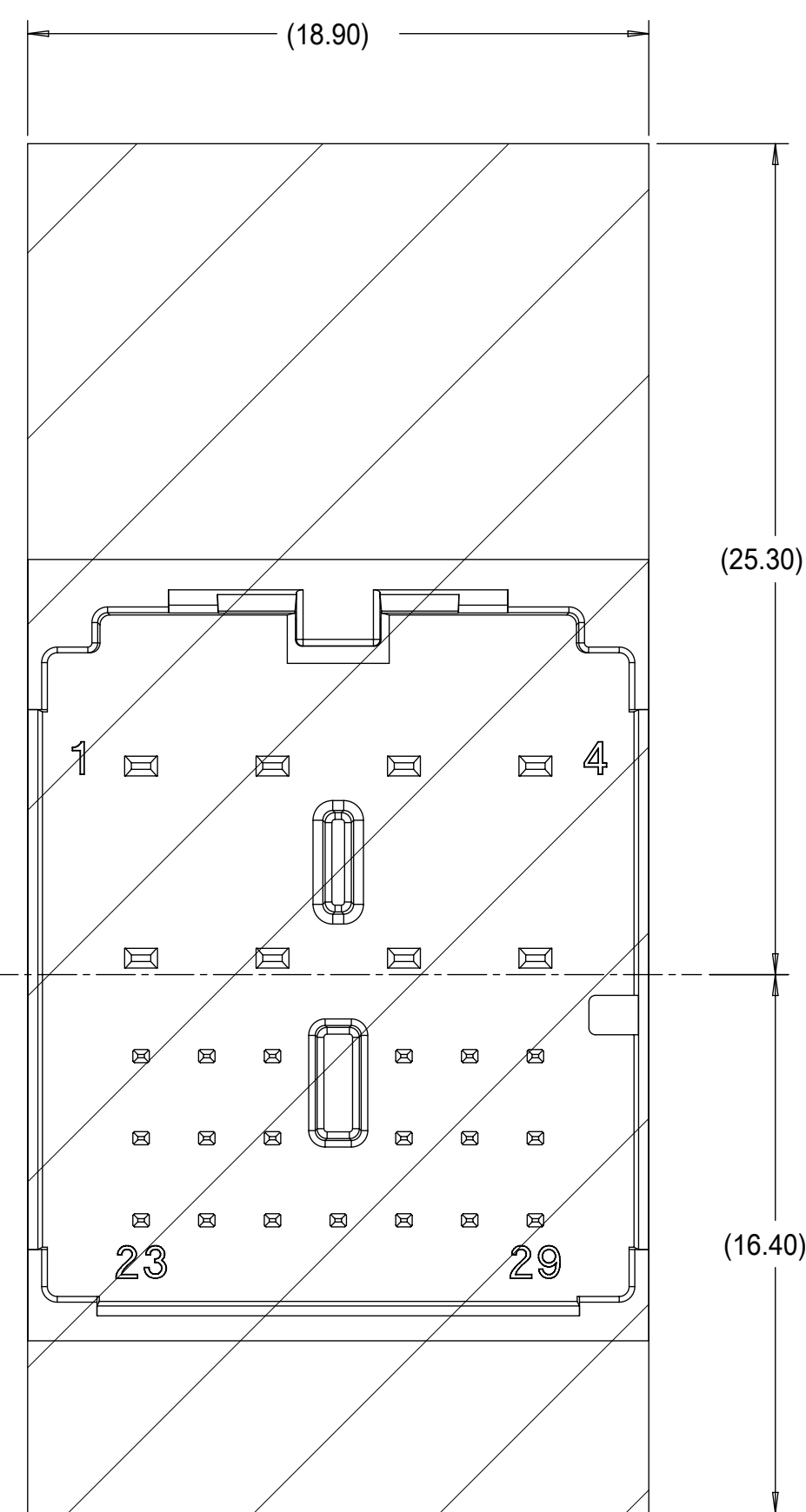
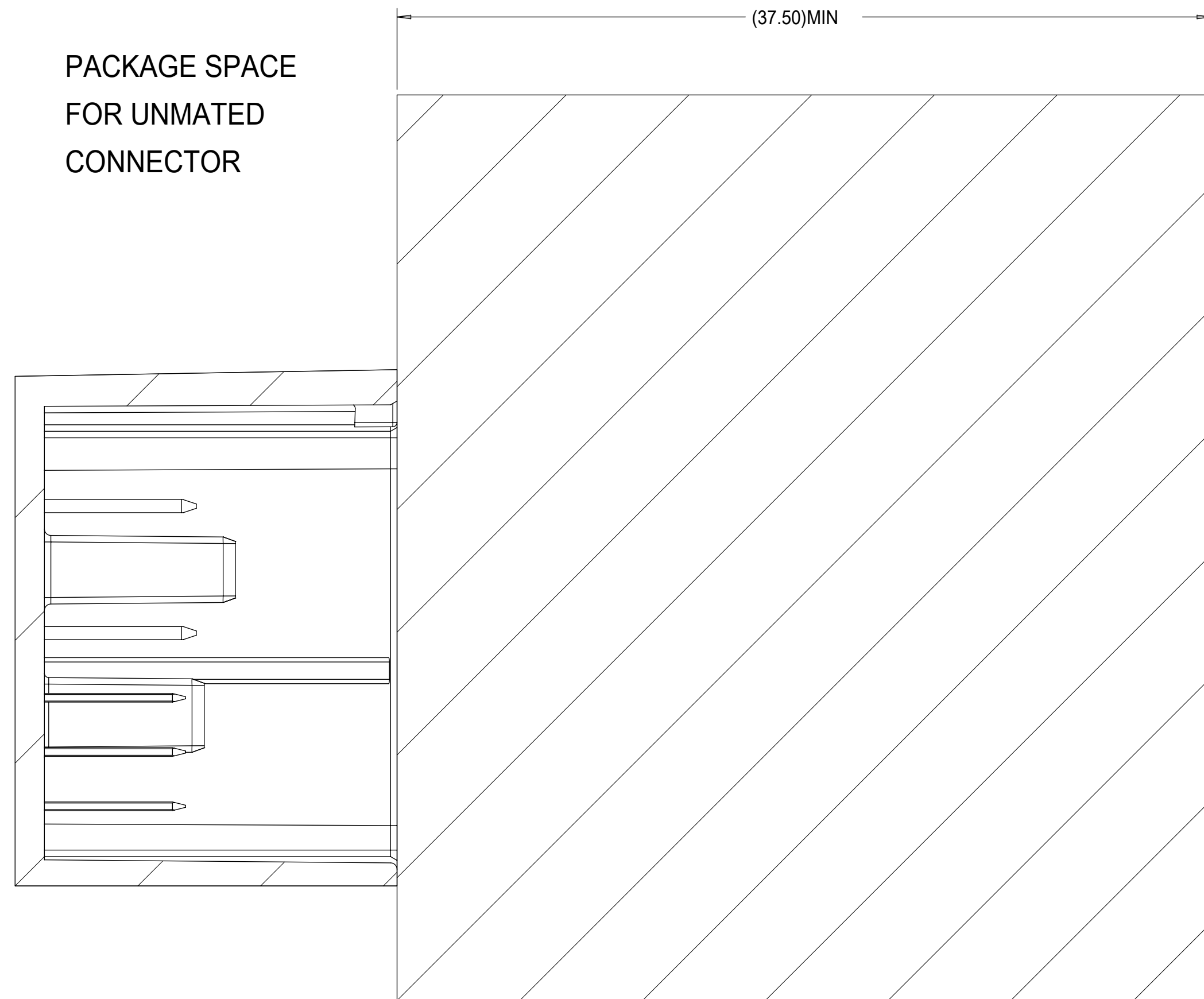
DETAIL 7  
SCALE 10:1


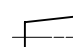


DETAIL 5  
SCALE 10:1

| SYMBOLS |  | THIS DRAWING CONTAINS INFORMATION THAT IS PROPRIETARY TO MOLEX ELECTRONIC TECHNOLOGIES, LLC AND SHOULD NOT BE USED WITHOUT WRITTEN PERMISSION |  |       |  |  |  |         |  |   |  |                |  |          |  |
|---------|--|---|--|-------|--|--|--|---------|--|---|--|----------------|--|----------|--|
|         |  | DIMENSION UNITS   |  | SCALE |  | CURRENT REV DESC: ADDED DIMENSION BALLOONS |  |         |  | <div>molex</div> <div>27WAY STAK50H<br/>INTERFACE DRAWING</div> |  |                |  |          |  |
| = 0     |  | mm  |  | 5:1   |  |  |  |         |  |   |  |                |  |          |  |
|         |  | GENERAL TOLERANCES (UNLESS SPECIFIED)   |  |       |  | EC NO: 602204                              |  |         |  | PRODUCT CUSTOMER DRAWING  |  |                |  |          |  |
| = 0     |  |   |  |       |  | DRWN: JCONDON 2018/08/02                   |  |         |  |   |  |                |  |          |  |
|         |  | ANGULAR TOL   |  | ± °   |  | CHK'D: JCONDON 2018/08/03                  |  |         |  | DOCUMENT NUMBER<br>SD-160029-002                                |  |                |  |          |  |
| = 6     |  |   |  |       |  | APPR: MVANSLAMBROU 2018/08/03              |  |         |  |   |  |                |  |          |  |
|         |  | 4 PLACES  |  | ±     |  | INITIAL REVISION:                          |  |         |  | DOC TYPE  |  | DOC PART       |  | REVISION |  |
| = 0     |  |   |  |       |  | DRWN: DAHALL 2013/11/20                    |  |         |  | PSD   |  | 001            |  | B1       |  |
|         |  | 3 PLACES  |  | ±     |  | APPR: KDEKOSKI 2014/01/02                  |  |         |  | MATERIAL NUMBER   |  | SHEET NUMBER   |  |          |  |
| = 0     |  |   |  |       |  |  |  |         |  | CUSTOMER  |  | GENERAL MARKET |  |          |  |
|         |  | 2 PLACES  |  | ±     |  |  |  |         |  |   |  |                |  |          |  |
| = 0     |  |   |  |       |  |  |  |         |  |   |  |                |  |          |  |
|         |  | 1 PLACE   |  | ±     |  |  |  |         |  |   |  |                |  |          |  |
| = 0     |  |   |  |       |  |  |  |         |  |   |  |                |  |          |  |
|         |  | 0 PLACES  |  | ±     |  |  |  |         |  |   |  |                |  |          |  |
| = 0     |  |   |  |       |  |  |  |         |  |   |  |                |  |          |  |
|         |  | DRAFT WHERE APPLICABLE MUST REMAIN WITHIN DIMENSIONS  |  |       |  | THIRD ANGLE PROJECTION                     |  | DRAWING |  | SERIES  |  |                |  |          |  |
| = 0     |  |   |  |       |  |  |  | D-SIZE  |  | 160029  |  |                |  |          |  |

### PACKAGE SPACE FOR CONNECTOR



| SYMBOLS   |  | THIS DRAWING CONTAINS INFORMATION THAT IS PROPRIETARY TO MOLEX ELECTRONIC TECHNOLOGIES, LLC AND SHOULD NOT BE USED WITHOUT WRITTEN PERMISSION |  |   |  |                                      |  |                                    |  |                  |  |                    |  |                            |  |                        |  |
|---|--|---|--|---|--|--------------------------------------|--|------------------------------------|--|------------------|--|--------------------|--|----------------------------|--|------------------------|--|
| DIMENSION UNITS   |  | SCALE   |  | CURRENT REV DESC: ADDED DIMENSION<br>BALLOONS |  |                                      |  | <div>molex</div>                   |  |                  |  |                    |  |                            |  |                        |  |
| mm  |  | 5:1   |  |   |  |                                      |  |                                    |  |                  |  |                    |  |                            |  |                        |  |
| GENERAL TOLERANCES<br>(UNLESS SPECIFIED)  |  | EC NO: 602204<br>DRWN: JCONDON 2018/08/02<br>CHK'D: JCONDON 2018/08/03<br>APPR: MVANSLAMBROU 2018/08/03                                       |  |   |  |                                      |  | 27WAY STAK50H<br>INTERFACE DRAWING |  |                  |  |                    |  |                            |  |                        |  |
| ANGULAR TOL ± °   |  |   |  |   |  |                                      |  |                                    |  |                  |  |                    |  |                            |  |                        |  |
| 4 PLACES ±  |  | INITIAL REVISION:<br>DRWN: DAHALL 2013/11/20<br>APPR: KDEKOSKI 2014/01/02   |  |   |  | DOCUMENT NUMBER<br><br>SD-160029-002 |  | DOC TYPE<br>PSD                    |  | DOC PART<br>001  |  | REVISION<br><br>B1 |  |                            |  |                        |  |
| 3 PLACES ±  |  |   |  |   |  |                                      |  |                                    |  |                  |  |                    |  |                            |  |                        |  |
| 2 PLACES ±  |  |   |  |   |  |                                      |  |                                    |  |                  |  |                    |  |                            |  |                        |  |
| 1 PLACE ±   |  |   |  |   |  |                                      |  |                                    |  |                  |  |                    |  |                            |  |                        |  |
| 0 PLACES ±  |  | DRAFT WHERE APPLICABLE<br>MUST REMAIN<br>WITHIN DIMENSIONS  |  |   |  | THIRD ANGLE PROJECTION               |  | DRAWING<br>D-SIZE                  |  | SERIES<br>160029 |  | MATERIAL NUMBER    |  | CUSTOMER<br>GENERAL MARKET |  | SHEET NUMBER<br>3 OF 3 |  |
|   |  |   |  |   |  |                                      |  |                                    |  |                  |  |                    |  |                            |  |                        |  |
|  |  |    |  |   |  |                                      |  |                                    |  |                  |  |                    |  |                            |  |                        |  |

|                 |    |              |            |          |
|-----------------|----|--------------|------------|----------|
| DOCUMENT STATUS | P1 | RELEASE DATE | 2018/08/03 | 19:41:35 |
|-----------------|----|--------------|------------|----------|