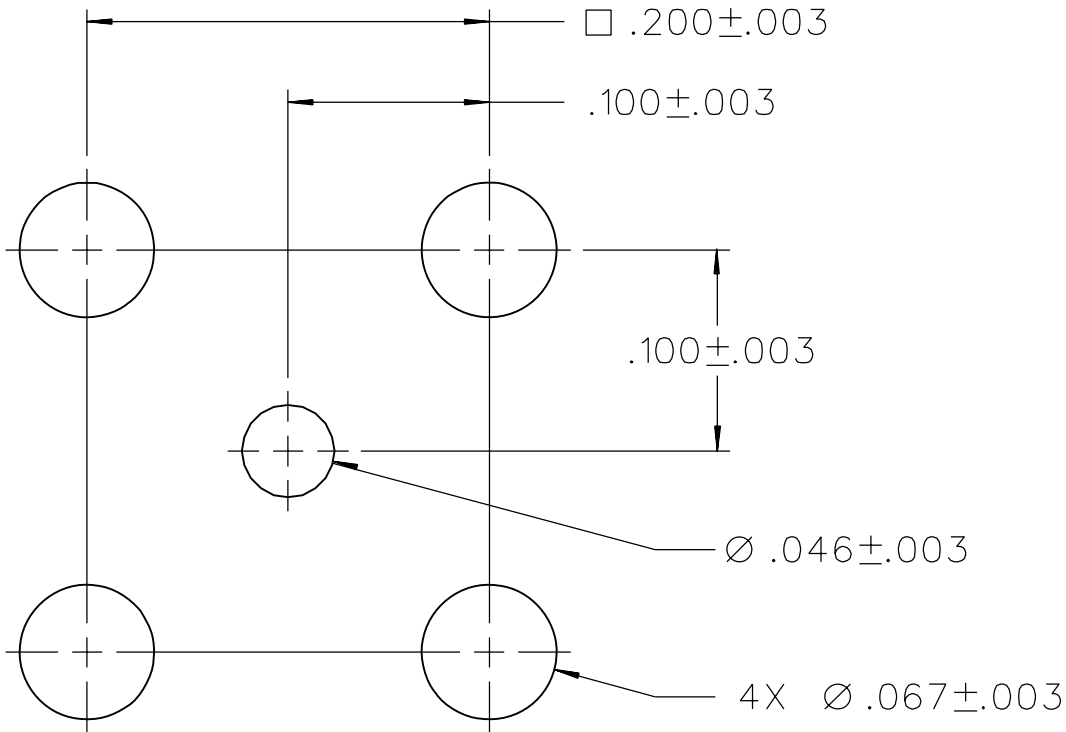
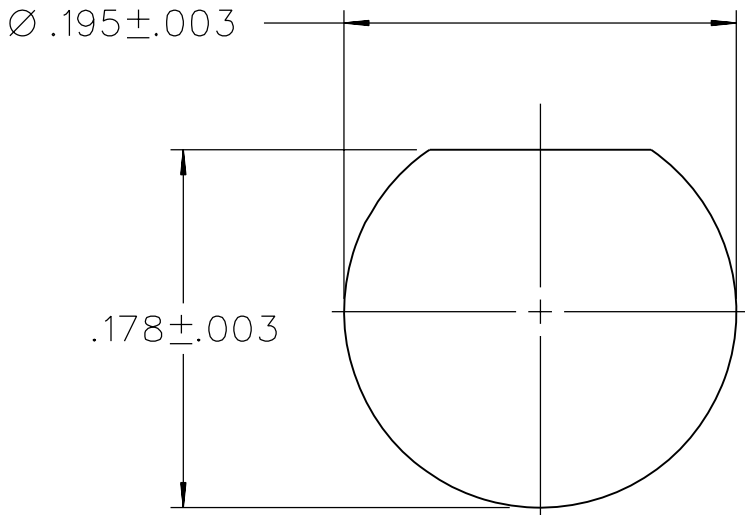


PART NUMBER	ITEM ① BODY	ITEM ② BASE	ITEM ③ CONTACT (ONE PIECE)	ITEM ④ BODY INSULATOR	ITEM ⑤ BASE INSULATOR	ITEM ⑥ WASHER	ITEM ⑦ NUT
131-6701-501	BRASS GOLD PL .00001 MIN OVER NICKEL PL .00005 MIN OVER COPPER PL .00005 MIN	BRASS GOLD PL .00001 MIN OVER NICKEL PL .00005 MIN OVER COPPER PL .00005 MIN	BRASS GOLD PL .00003 MIN OVER NICKEL PL .00005 MIN OVER COPPER PL .00005 MIN	TEFLON	TEFLON	PHOSPHOR BRONZE GOLD PL .00001 MIN OVER NICKEL PL .00005 MIN OVER COPPER PL .00005 MIN	BRASS GOLD PL .00001 MIN OVER NICKEL PL .00005 MIN OVER COPPER PL .00005 MIN
131-6701-502	BRASS GOLD PL .00001 MIN OVER NICKEL PL .00005 MIN OVER COPPER PL .00005 MIN	BRASS GOLD PL .00001 MIN OVER NICKEL PL .00005 MIN OVER COPPER PL .00005 MIN	BRASS GOLD PL .00003 MIN OVER NICKEL PL .00005 MIN OVER COPPER PL .00005 MIN	TEFLON	TEFLON		



MOUNTING HOLE LAYOUT



MOUNTING HOLE

NOTES:

1. SPECIFICATIONS:

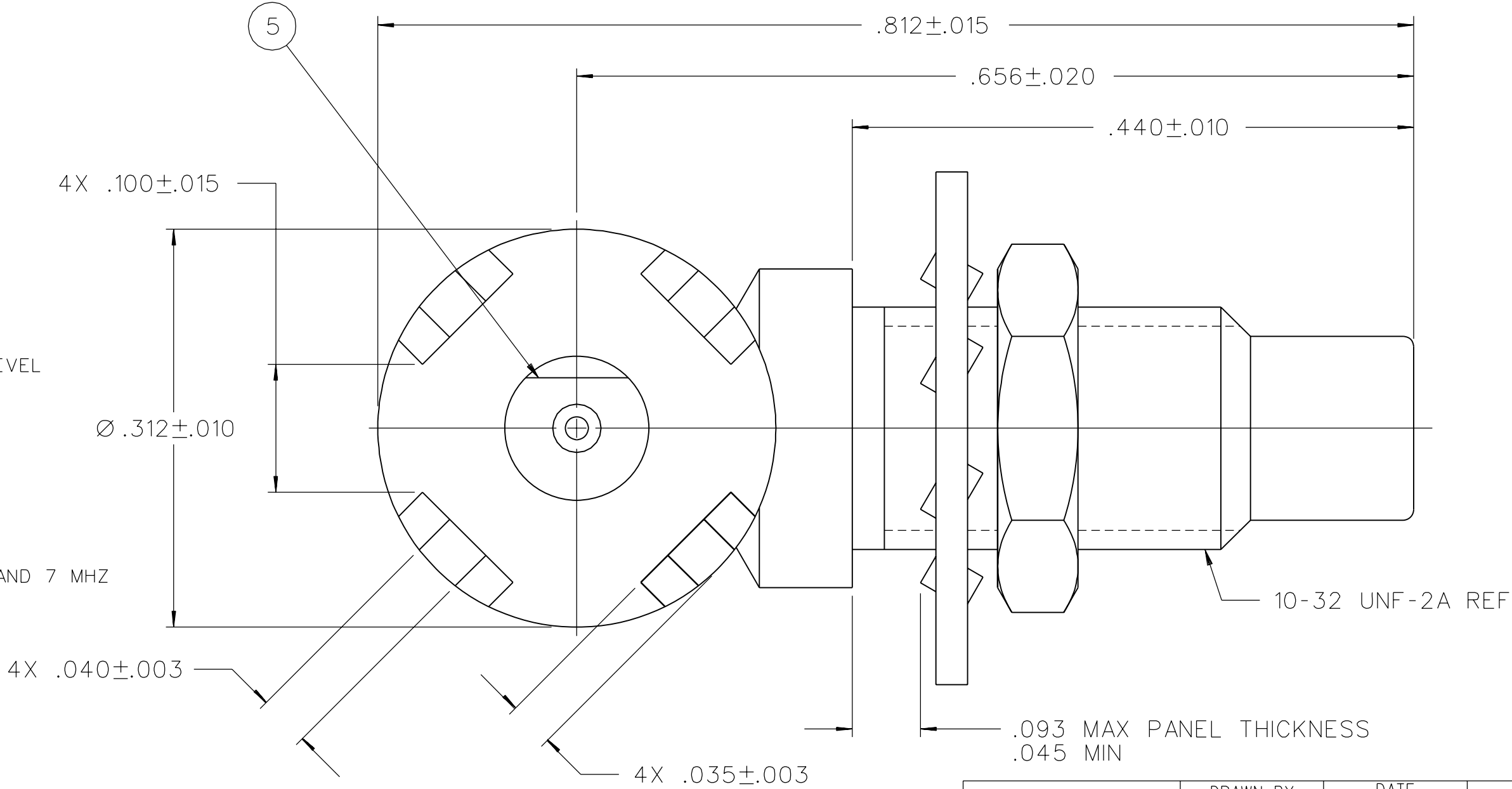
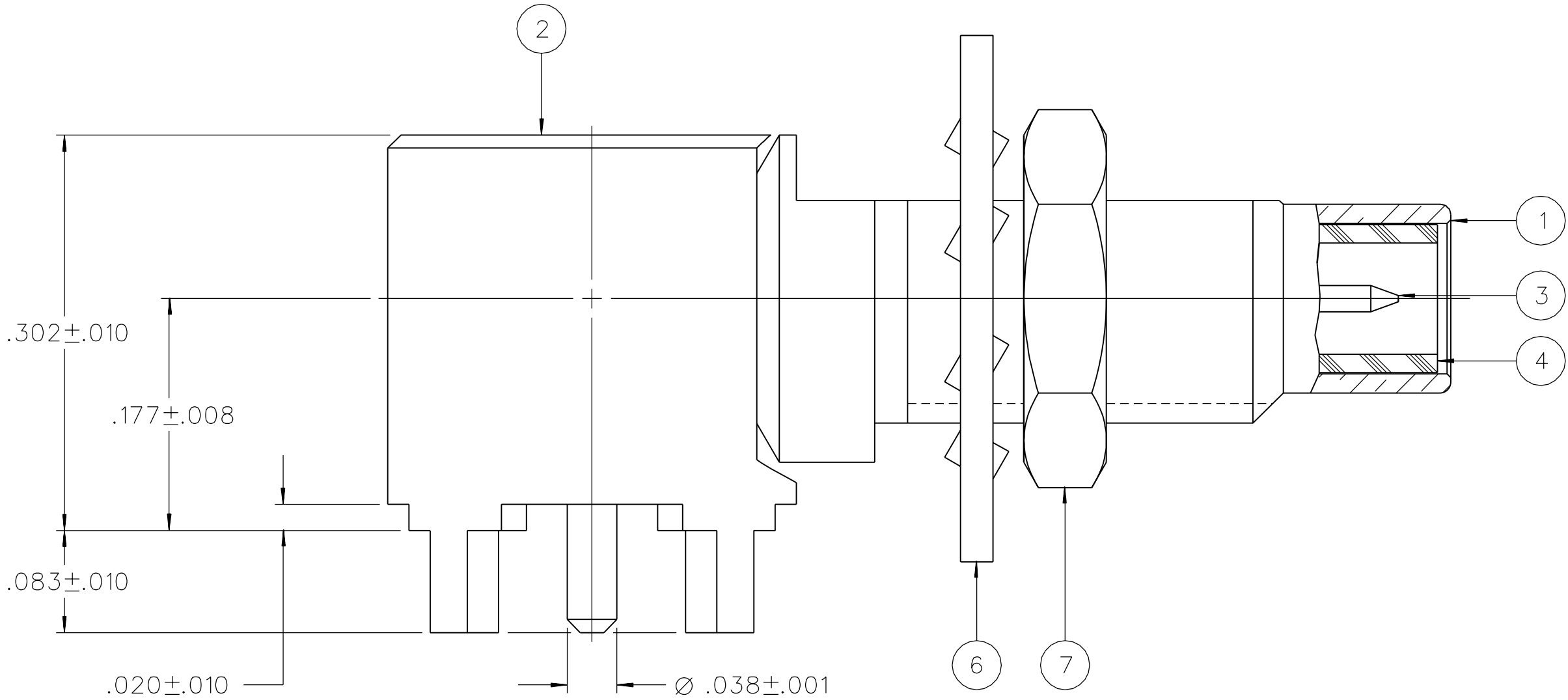
IMPEDANCE: 50 OHMS
FREQUENCY RANGE: 0-10 GHz
VSWR: NOT APPLICABLE
WORKING VOLTAGE: 335 VRMS MAX AT SEA LEVEL
DIELECTRIC WITHSTANDING VOLTAGE: 1000 VRMS MIN AT SEA LEVEL
INSULATION RESISTANCE: 1000 MEGOHM MIN
CONTACT RESISTANCE:
 CENTER CONTACT - INITIAL 6 MILLIOHM MAX, AFTER ENVIRONMENTAL 8 MILLIOHM MAX
 OUTER CONDUCTOR - INITIAL 1 MILLIOHM MAX, AFTER ENVIRONMENTAL NOT APPLICABLE
BRAID TO BODY - NOT APPLICABLE
CORONA LEVEL: NOT APPLICABLE
INSERTION LOSS: NOT APPLICABLE
RF LEAKAGE: NOT APPLICABLE
RF HIGH POTENTIAL WITHSTANDING VOLTAGE: 600 VRMS AT 4 AND 7 MHZ

MECHANICAL:

MATING INTERFACE: PER MIL-STD-348, SMC SERIES
ENGAGE/DISENGAGE TORQUE: 16 INCH-OUNCES MAX
MATING TORQUE: 30-50 INCH-OUNCES
COUPLING PROOF TORQUE: NOT APPLICABLE
COUPLING NUT RETENSION: NOT APPLICABLE
CONTACT RETENSION: 4 LBS MIN AXIAL FORCE
CABLE ACCEPTABILITY: NOT APPLICABLE
CABLE HEX CRIMP SIZE: NOT APPLICABLE
CABLE RETENTION: NOT APPLICABLE
DURABILITY: 500 CYCLES MIN

ENVIRONMENTAL:

(MEETS OR EXCEEDS THE APPLICABLE PARAGRAPH OF MIL-PRF-39012)
THERMAL SHOCK: MIL-STD-202, METHOD 107, CONDITION B
OPERATING TEMPERATURE: -65 DEG C TO 165 DEG C
CORROSION: MIL-STD-202, METHOD 101, CONDITION B
SHOCK: MIL-STD-202, METHOD 213, CONDITION C
VIBRATION: MIL-STD-202, METHOD 204, CONDITION D



TOLERANCE UNLESS OTHERWISE SPECIFIED		DRAWN BY M.G. ROOT (EJ)	DATE 4-2-91 (2-5-90)
DECIMALS	mm		
.XX	_____	CHECKED BY	DATE
.XXX	_____	APPROVED BY	DATE
MATL		RELEASE DATE	9-22-92
FINISH		U/M	INCH
		SCALE	10:1

Connectivity Solutions	
P.O. Box 1732 Waseca, MN 56093 1-800-247-8256	
EMERSON Network Power	
TITLE JACK ASSEMBLY RA PC MOUNT BULKHEAD SMC	
SHEET 2 OF 2	DRAWING NO. C - 131-6701-501/510

DRAWING NO. C - 131-6701-501/510	
0	REVISIONS
ADDED: SHEET 2 OF 2	
2	4-2-91 MGR JBF 4-12-91 ECO 40319
CHANGED: RF HIGH POT 4 AND 7 MHZ WAS 5 MHZ	
3	9-2-92 RH TAC RJB PAH 9-22-92 ECO 41184
ADDED: P/N 131-6701-502	
3a	11-20-96 RH RJB BA 44408
VERSION UPDATE	
3b	3-26-98 RH RJB 44921
UPDATED GRAPHICS ADDED: MATING INTERFACE NOTE ***** * REVISION NUMBER FOLLOWED BY AN ALPHA * * CHARACTER INDICATES DRAWING CLARIFI- * CATION OR PART NUMBER ADDITION ONLY. * *****	
3c	9-12-02 RH TAC RJB 47774

CUSTOMER DRAWING

THIS DRAWING TO BE INTERPRETED
PER ASME Y 14.5M - 1994

"μSTATION"

COMPANY CONFIDENTIAL