

TABLE OF CONTENTS	
SHEET NO.	SHEET DESCRIPTION
1	NOTES AND BOM
2	CONFIGURATIONS
3	BLADE CAVITY PLUG DETAIL
4	RECEPTACLE CAVITY PLUG DETAIL

NOTES: VALID UNLESS OTHERWISE SPECIFIED

1. GENERAL:
- a.

APPLICATION SPECIFICATION SEE: AS-33472-100

- COMPONENTS ARE OPTIONAL AND MUST BE PURCHASED SEPERATELY

- FOR ASSEMBLY INSTRUCTIONS SEE THE APPLICATION SPECIFICATION

- SEAL PLUGS ARE NOT TO BE USED TO REPLACE SHORTING BAR TERMINALS.
- b.

PRODUCT SPECIFICATION SEE: N/A
- c.

PACKAGING SPECIFICATION PER MOLEX DRAWING: PK-31300-438
- d.

PARTS MUST BE IN COMPLIANCE TO MOLEX CHEMICAL SUBSTANCES FOR PRODUCTS AND PACKAGING SPECIFICATION: QEHS-699000-300
- e.

DATA MUST BE SUBMITTED UNDER THE MOLEX PART NUMBER TO IMDS (COMPANY ID#13255)
2. DESIGN - MATERIALS:
- a.

MATERIAL: SEE TABLE
3. DESIGN - GEOMETRY:
- a.

ALL GRAPHIC DATA IS BASIC (NO TOLERANCE) AND MUST BE TAKEN FROM THE DATA FILE AT ITS LATEST REVISION.
- b.

GEOMETRIC DIMENSIONS AND TOLERANCES PER ASME Y14.5M - 2009
- c.

THE BASIC DIMENSIONS OF THE COMPONENT ARE DEFINED BY THE 3-D CAD DATA. THE CAD MATHEMATICAL DATA IS THE MASTER FOR ALL FEATURES AND IS TO BE USED TO ESTABLISH DIMENSIONAL INFORMATION NOT SHOWN ON THIS DRAWING.
- d.

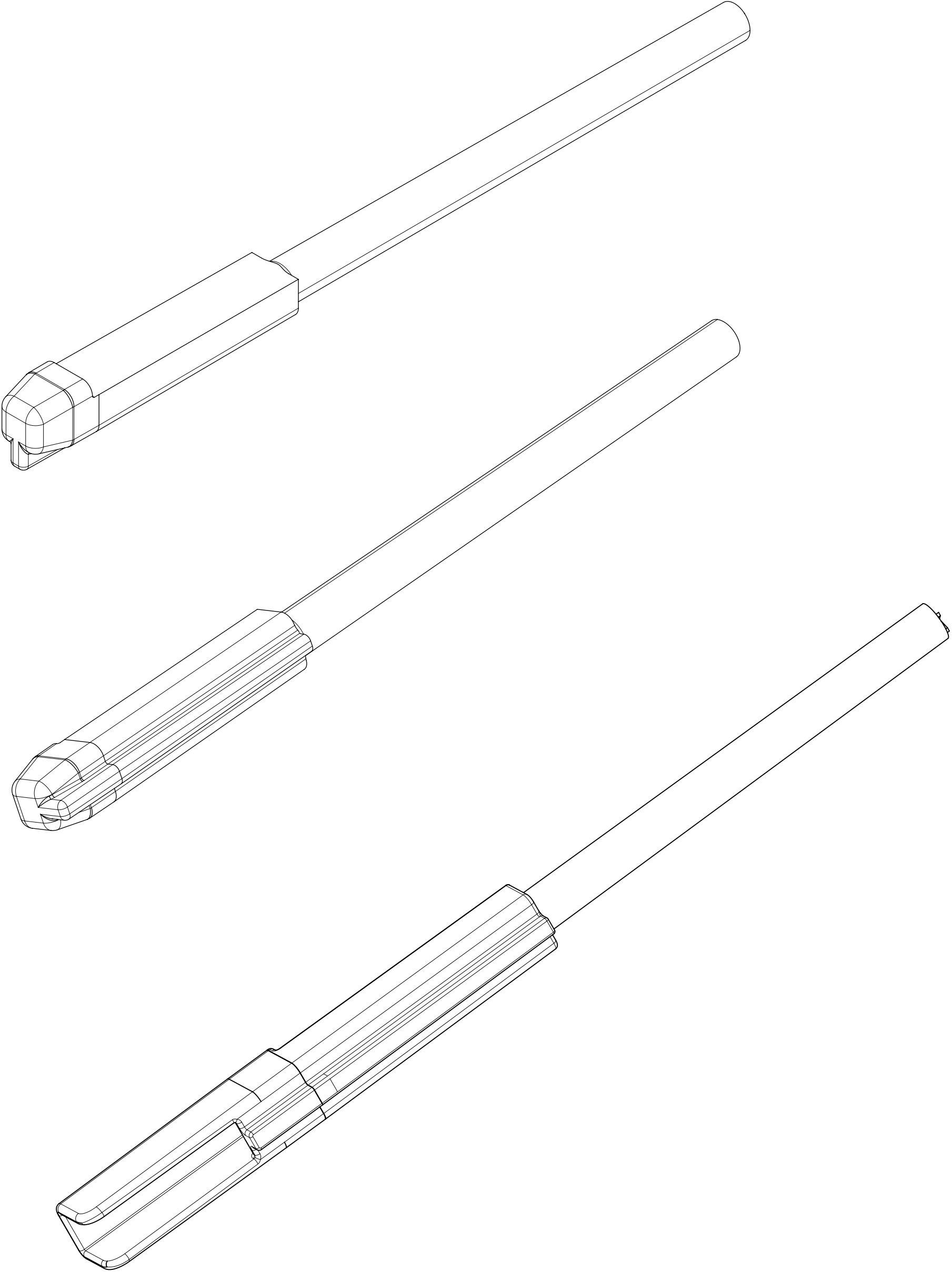
GENERAL TOLERANCES: SEE TITLE BLOCK
- e.

EDGES AND UNDIMENSIONED DETAILS PER ISO13715
- f.

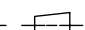
CORNERS SHOWN AS SHARP TO BE R 0.2 MAX.
- g.

LETTERING SHALL BE 0.15 MAX RAISED.

BILL OF MATERIALS (BOM)				
DESCRIPTION	PART NUMBER	COLOR	STATUS	MATERIAL
MX150, NATURAL	34345-0001	NATURAL	SALEABLE	PBT
MX150, BLACK	34345-0002	BLACK	PLANNED OBSOLESCENCE	PBT
MX150 BLADE EXTENDED	34345-0003	BLACK	SALEABLE	PBT
MX150 RECEPTACLE	34345-4001	DARK GREY	OK TO TOOL	SPS PA66

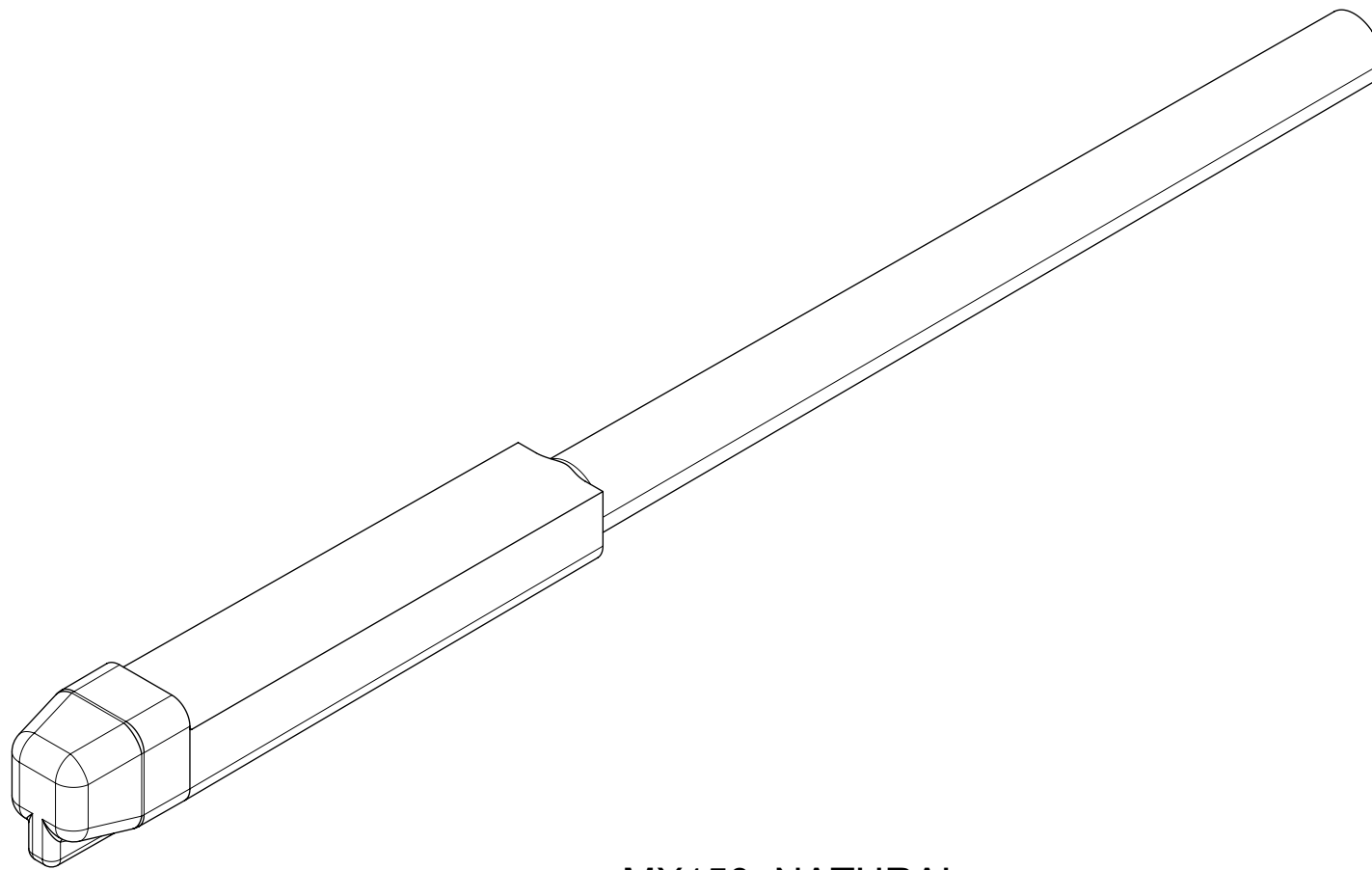


D1	CHANGE PARTS STATUS TO SALEABLE
D	ADDITION OF RECEPTACLE CAVITY PLUG DETAILS
C6	NX RE-MASTERING
REV	DESCRIPTION

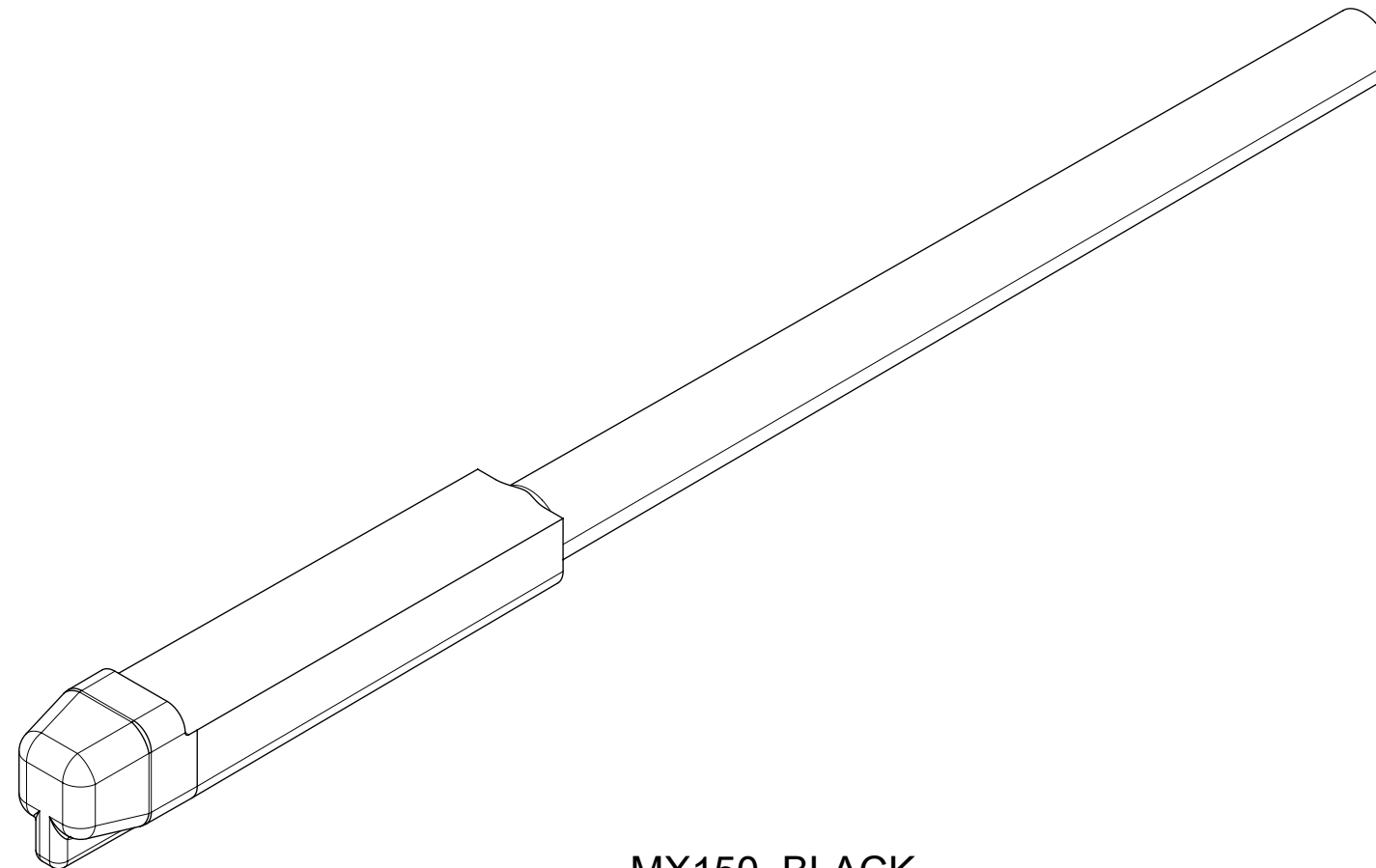
THIS DRAWING CONTAINS INFORMATION THAT IS PROPRIETARY TO MOLEX ELECTRONIC TECHNOLOGIES, LLC AND SHOULD NOT BE USED WITHOUT WRITTEN PERMISSION																
EC NO: 625413 DRWN: PPALLAN CHKD: MVANSLAMBROU APPR: MVANSLAMBROU	2019/10/08 2019/10/31 2019/10/31	GENERAL TOLERANCES (UNLESS SPECIFIED)		DIMENSION UNITS		SCALE		<div>molex®</div>								
				MM ONLY		7:1										
		ANGULAR TOL ± 3.0 °		DRWN BY		DATE		MX150 CAVITY PLUG SEALED								
		4 PLACES ±		MVANSLAM		10/27/05										
		3 PLACES ±		CHK'D BY		DATE										
		2 PLACES ± 0.1		ABUTCHER		10/27/05										
		1 PLACE ± 0.3		APPR BY		DATE		PRODUCT CUSTOMER DRAWING								
		0 PLACES ±		SMARCEAU		10/27/05										
		DRAFT WHERE APPLICABLE MUST REMAIN WITHIN DIMENSIONS		DRAWING SIZE		THIRD ANGLE PROJECTION		SERIES		MATERIAL NUMBER			CUSTOMER			
				D				34345		SEE BOM			GENERAL MARKET			
DOCUMENT NUMBER		DOC TYPE			DOC PART		SHEET NUMBER									
SD-34345-001		PSD			000		1 OF 4									

SHEET DESCRIPTION

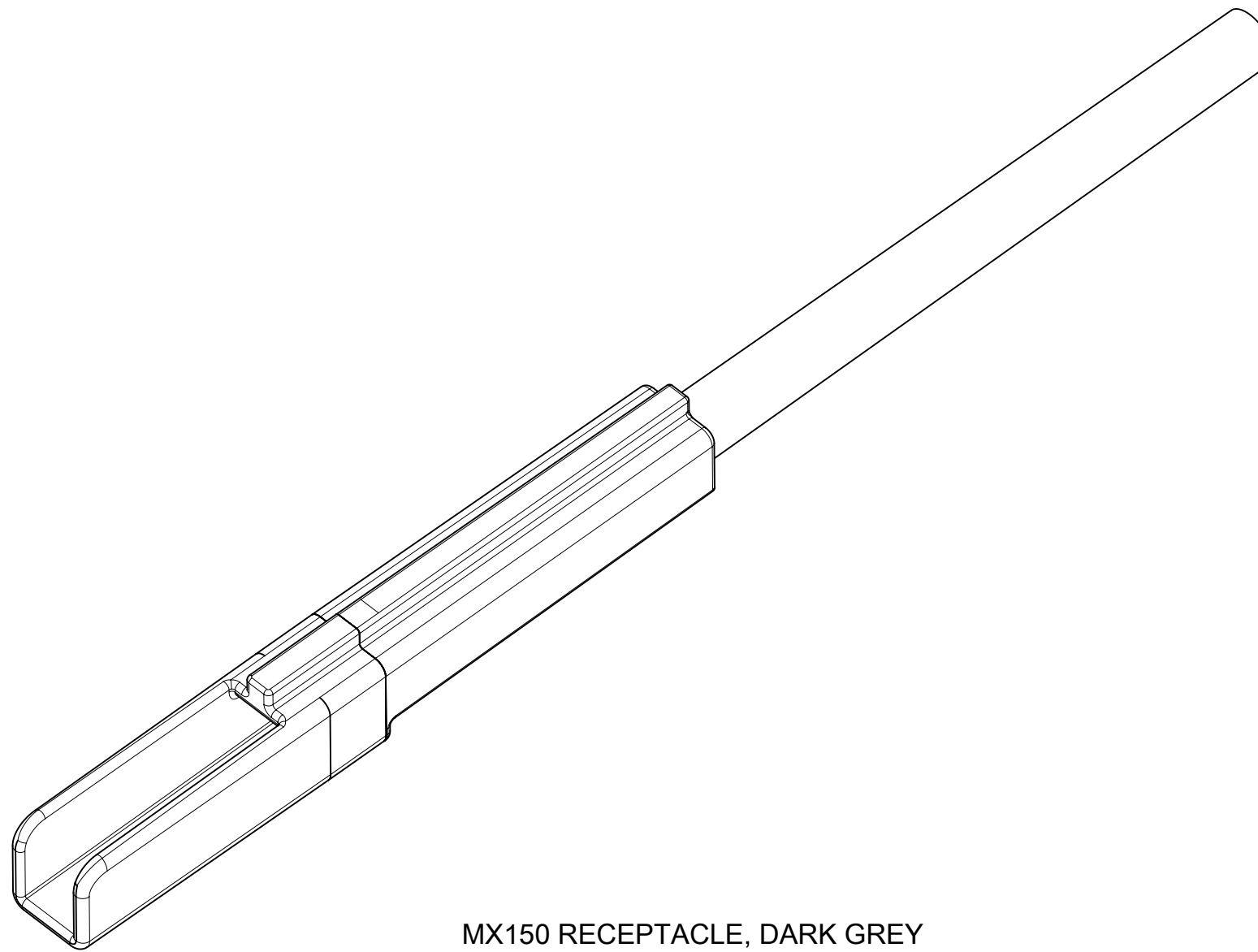
CONFIGURATIONS



MX150, NATURAL

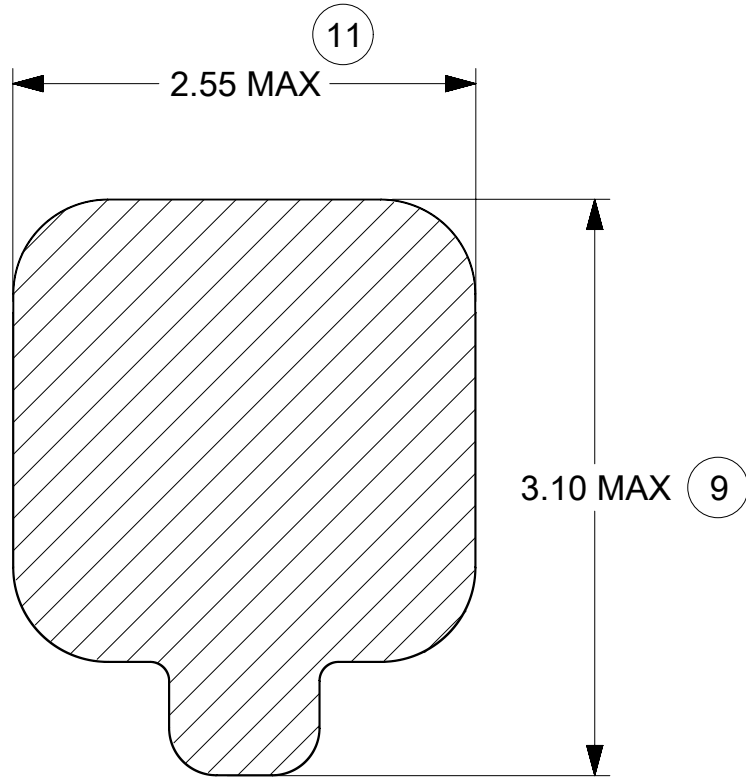
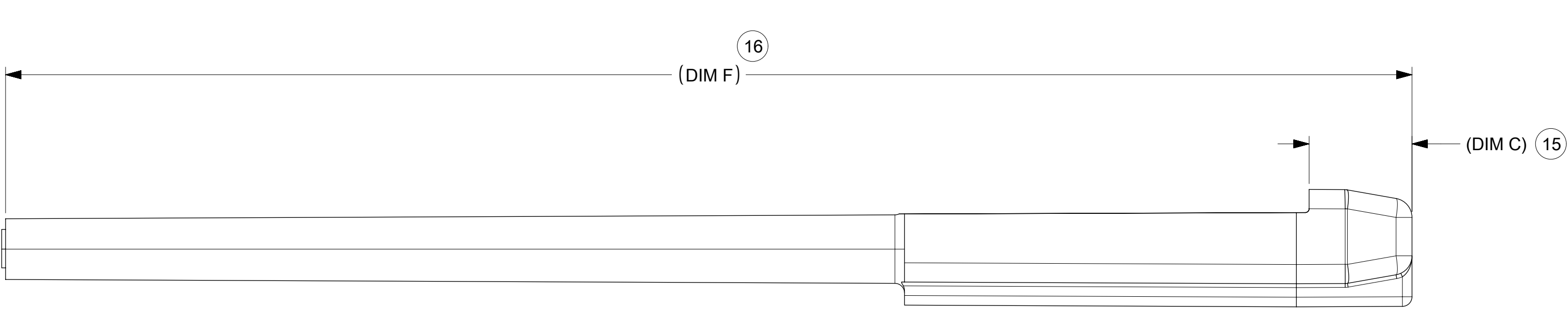
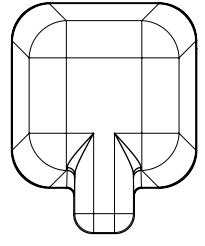
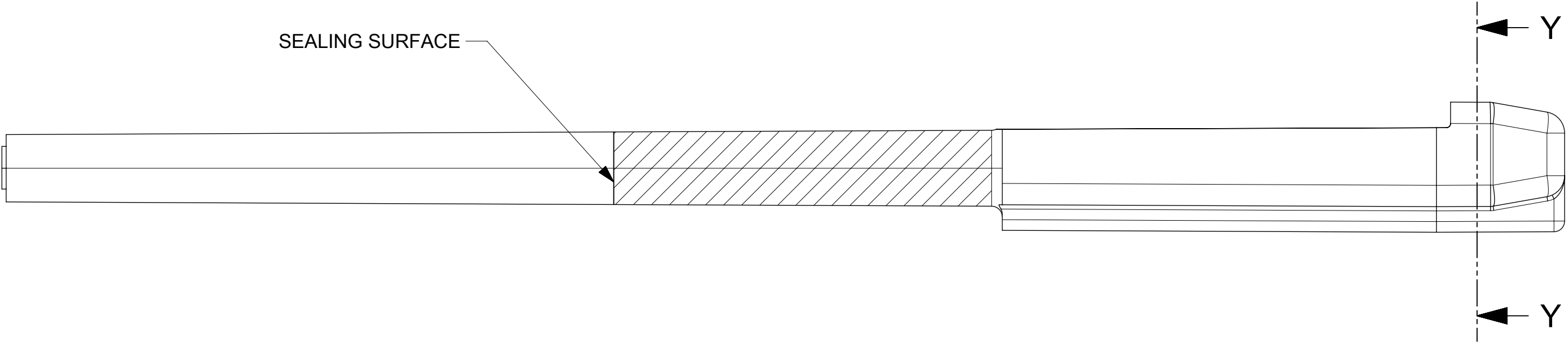
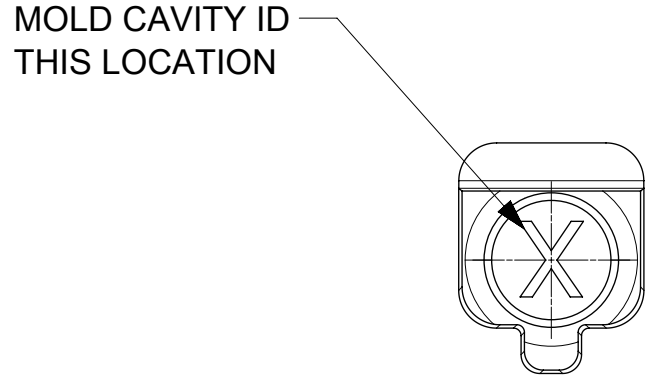
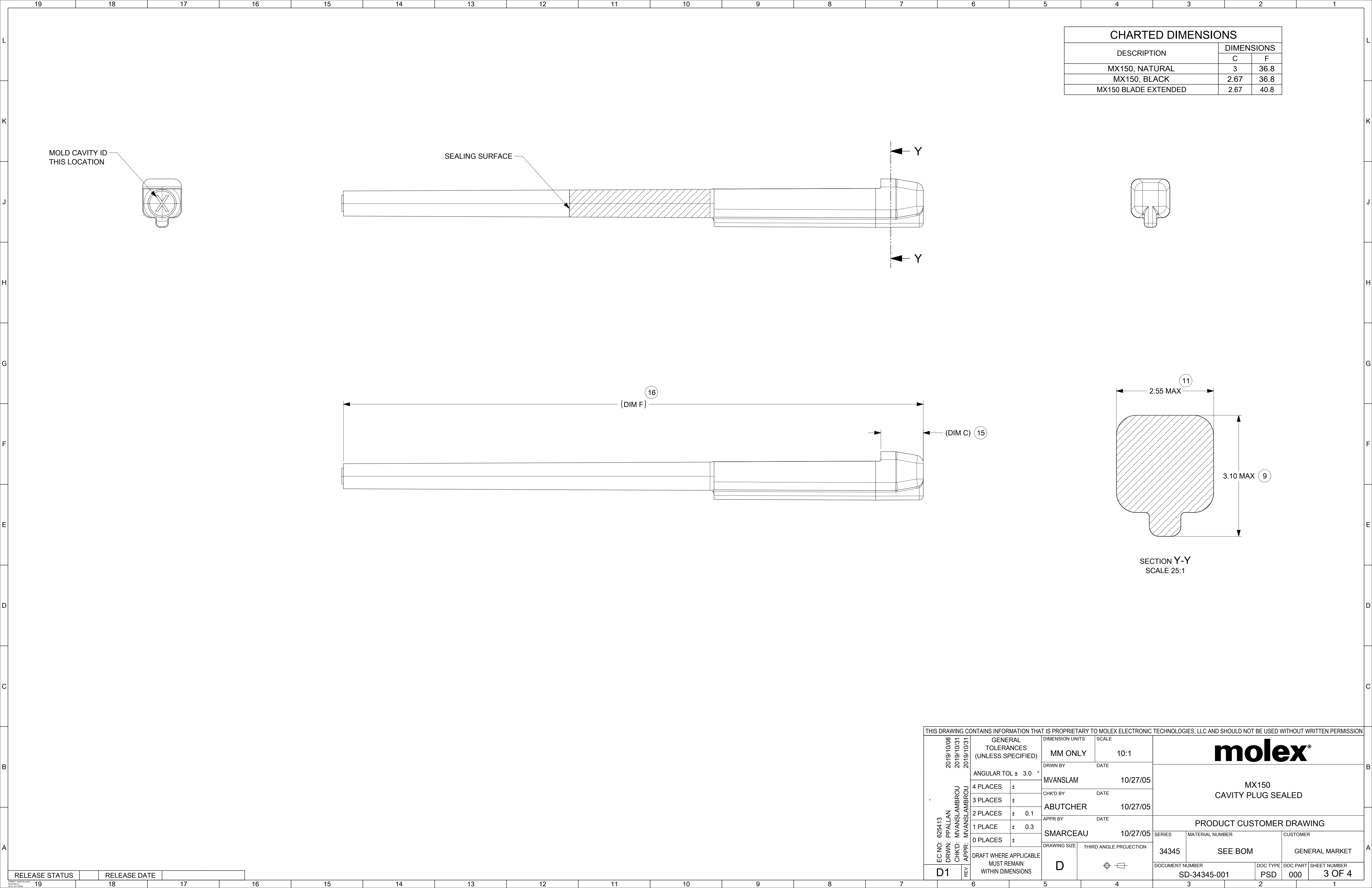


MX150, BLACK



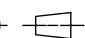
MX150 RECEPTACLE, DARK GREY

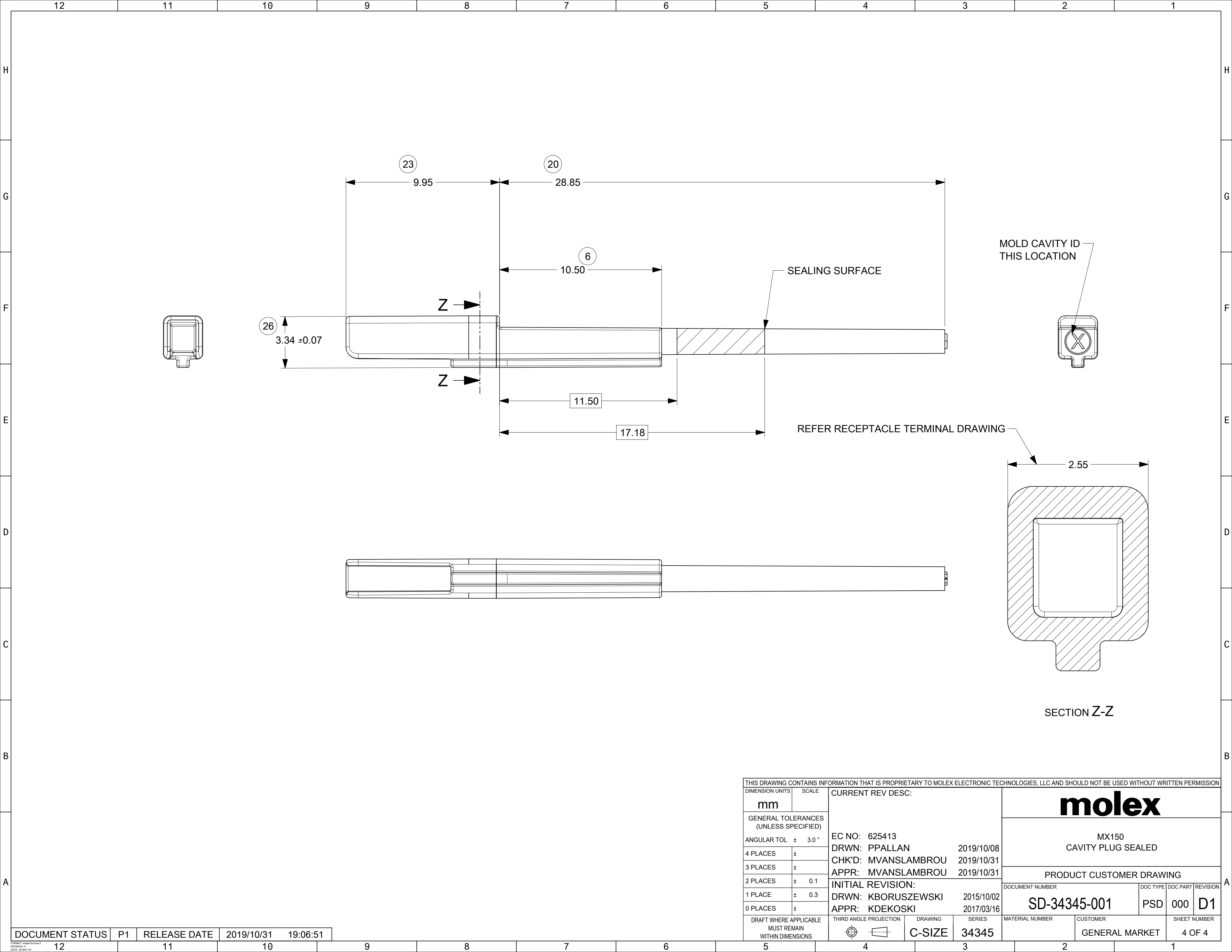
THIS DRAWING CONTAINS INFORMATION THAT IS PROPRIETARY TO MOLEX ELECTRONIC TECHNOLOGIES, LLC AND SHOULD NOT BE USED WITHOUT WRITTEN PERMISSION																																					
EC NO: 625413 DRWN: PPALLAN CHKD: MVANSLAMBROU APPR: MVANSLAMBROU	REV	GENERAL TOLERANCES (UNLESS SPECIFIED)		DIMENSION UNITS	SCALE	<div><div><div>molex</div></div><div>MX150 CAVITY PLUG SEALED</div></div>																															
		ANGULAR TOL ± 3.0 °		MM ONLY	7:1																																
		4 PLACES	±	DRWN BY	DATE																																
		3 PLACES	±	MVANSLAM	10/27/05																																
		2 PLACES	± 0.1	CHK'D BY	DATE																																
		1 PLACE	± 0.3	ABUTCHER	10/27/05																																
		0 PLACES	±	APPR BY	DATE																																
		DRAFT WHERE APPLICABLE MUST REMAIN WITHIN DIMENSIONS		SMARCEAU	10/27/05																																
D	THIRD ANGLE PROJECTION																																				
RELEASE STATUS		RELEASE DATE																																			
19		18		17		16		15		14		13		12		11		10		9		8		7		6		5		4		3		2		1	




SECTION Y-Y  
SCALE 25:1

CHARTED DIMENSIONS		
DESCRIPTION	DIMENSIONS	
	C	F
MX150, NATURAL	3	36.8
MX150, BLACK	2.67	36.8
MX150 BLADE EXTENDED	2.67	40.8

THIS DRAWING CONTAINS INFORMATION THAT IS PROPRIETARY TO MOLEX ELECTRONIC TECHNOLOGIES, LLC AND SHOULD NOT BE USED WITHOUT WRITTEN PERMISSION															
EC NO: 625413 DRWN: PPALLAN CHKD: MVANSLAMBROU APPR: MVANSLAMBROU	2019/10/08 2019/10/31 2019/10/31	GENERAL TOLERANCES (UNLESS SPECIFIED)		DIMENSION UNITS	SCALE	<div>molex<sup>®</sup></div> <div>MX150 CAVITY PLUG SEALED</div>									
				MM ONLY	10:1										
		ANGULAR TOL ± 3.0 °		DRWN BY		DATE		PRODUCT CUSTOMER DRAWING							
				MVANSLAM		10/27/05									
		4 PLACES ±		CHK'D BY		DATE		SERIES 34345 MATERIAL NUMBER SEE BOM CUSTOMER GENERAL MARKET							
		3 PLACES ±		ABUTCHER		10/27/05									
		2 PLACES ± 0.1		APPR BY		DATE									
		1 PLACE ± 0.3		SMARCEAU		10/27/05									
		0 PLACES ±		DRAWING SIZE		THIRD ANGLE PROJECTION		DOCUMENT NUMBER		DOC TYPE		DOC PART		SHEET NUMBER	
		DRAFT WHERE APPLICABLE MUST REMAIN WITHIN DIMENSIONS		D				SD-34345-001		PSD		000		3 OF 4	



THIS DRAWING CONTAINS INFORMATION THAT IS PROPRIETARY TO MOLEX ELECTRONIC TECHNOLOGIES, LLC AND SHOULD NOT BE USED WITHOUT WRITTEN PERMISSION											
DIMENSION UNITS		SCALE		CURRENT REV DESC:				<div>molex</div>			
mm											
GENERAL TOLERANCES (UNLESS SPECIFIED)				EC NO: 625413 DRWN: PPALLAN 2019/10/08 CHK'D: MVANSLAMBROU 2019/10/31 APPR: MVANSLAMBROU 2019/10/31				MX150 CAVITY PLUG SEALED			
ANGULAR TOL		±	3.0 °								
4 PLACES		±									
3 PLACES		±									
2 PLACES		±	0.1								
1 PLACE		±	0.3								
0 PLACES		±									
INITIAL REVISION: DRWN: KBORUSZEWSKI 2015/10/02 APPR: KDEKOSKI 2017/03/16				PRODUCT CUSTOMER DRAWING							
				DOCUMENT NUMBER		DOC TYPE	DOC PART	REVISION			
				SD-34345-001		PSD	000	D1			
DRAFT WHERE APPLICABLE MUST REMAIN WITHIN DIMENSIONS				THIRD ANGLE PROJECTION		DRAWING		SERIES		MATERIAL NUMBER	
						C-SIZE		34345		CUSTOMER	
								GENERAL MARKET		4 OF 4	

DOCUMENT STATUS	P1	RELEASE DATE	2019/10/31	19:06:51
-----------------	----	--------------	------------	----------