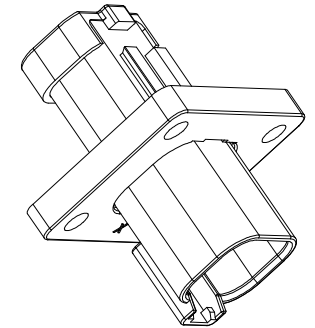
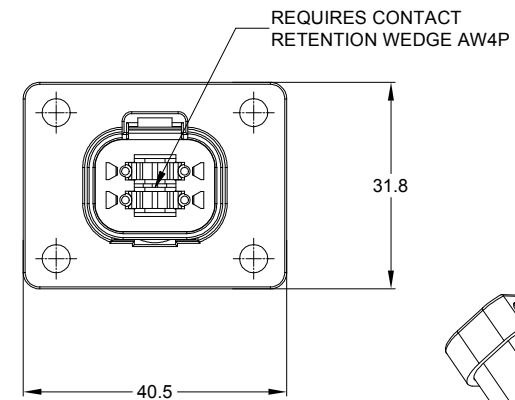
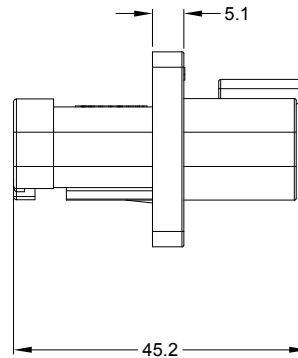
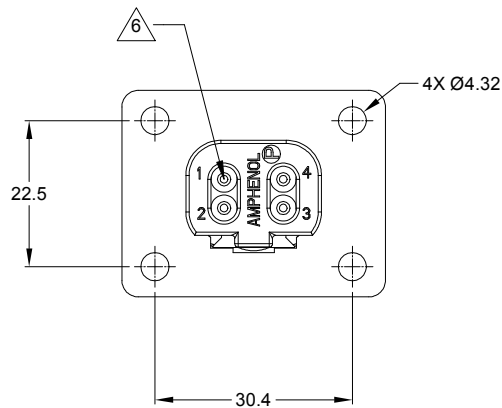
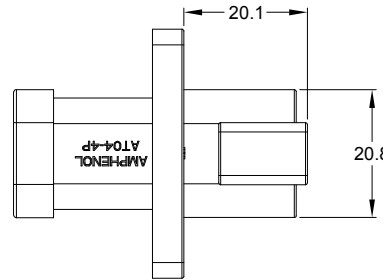


REVISIONS					
REV	ECO	DESCRIPTION	DATE	BY	APPR
A1	-	RELEASE NUMBER	30/NOV/18	BROOK	TOMMY




NOTES: UNLESS OTHERWISE SPECIFIED

- MATERIAL:
HOUSING: THERMOPLASTIC
SEAL: SILICONE RUBBER
- MODIFICATIONS: FLANGE, END CAP
- SPECIFICATIONS:
 - CURRENT RATING: 13 AMPS
 - OPERATING TEMPERATURE: -55°C TO +125°C.
 - DIELECTRIC WITHSTANDING VOLTAGE: LESS THAN 2 MILLIAMPS CURRENT LEAKAGE @ 1500 VOLTS AC.
 - INSULATION RESISTANCE: 1000 MEGOHMS MIN @ 25°C.
 - MOISTURE RESISTANCE: IP67 (MATED CONDITION)
 - MATING CYCLE DURABILITY: 100 CYCLES
 - RoHS COMPLIANT
- MATING PART: AT06-4S* PLUG.
(* = MODIFICATIONS AND COLORS)
- ALL DIMENSIONS ARE FOR REFERENCE USE ONLY.

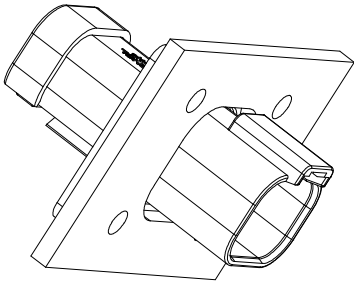
6 CONTACT SIZE AND REAR SEAL WIRE RANGE:

CONTACT SIZE	MIN. INSUL O.D.	MAX. INSUL O.D.	TYPICAL WIRE RANGE
16	2.24 mm (.088 in)	3.68 mm (.145 in)	14 - 18 AWG

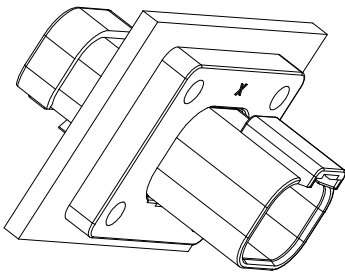
AT04-4P-LE11		DESCRIPTION		ITEM	
PART NUMBER					
MATERIALS LIST					
QUANTITY	UNLESS OTHERWISE SPECIFIED	SIGNATURES	DATE	<div>Amphenol</div> <div>Sine Systems - www.amphenol-sine.com 44724 Morley Drive Clinton Township, MI 48036</div> <div>4P RECEPTACLE, FLANGE MOUNT, END CAP</div>	
	1) All dimensions are in metric (mm).	DRAWN:	BROOK		30/NOV/18
	2) Tolerances are as follows:	CHECKED:	ORION		30/NOV/18
	1 PL DEC ±0.30 Fractions ±1/64	ENGINEER:			
	2 PL DEC ±0.15 Angles ±1°	APPROVAL:	TOMMY		30/NOV/18
	3 PL DEC ±0.08	CUSTOMER:			
	3) Note reference = 				
MATERIAL SPECIFICATIONS:					
PROCESS SPECIFICATIONS:		THIS DRAWING IS SUPPLIED FOR INFORMATION ONLY. DESIGN FEATURES, SPECIFICATIONS AND PERFORMANCE DATA SHOWN HEREON ARE THE PROPERTY OF THE AMPHENOL CORPORATION. NO RIGHTS OF REPRODUCTION ARE IMPLIED. ALL DIMENSIONS ARE SUBJECT TO NORMAL MANUFACTURING VARIATIONS.			
NEXT ASSY:					
		SIZE	TYPE	DWG NO:	
		B	C-	AT04-4P-LE11	
		SCALE:	NONE		
			SHEET	1 OF 2	
				REVISION	
				A1	

REVISIONS					
REV	ECO	DESCRIPTION	DATE	BY	APPR
A1	—	RELEASE NUMBER	30/NOV/18	BROOK	TOMMY

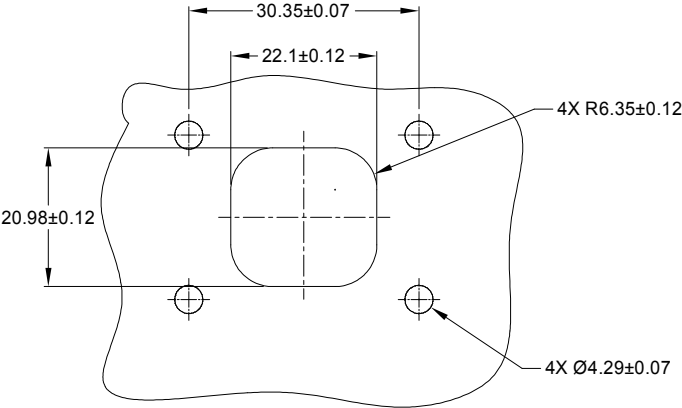
FOR REFERENCE ONLY




FRONT MOUNT



REAR MOUNT



RECOMMENDED CUTOUT
FRONT AND REAR MOUNT

		AT04-4P-LE11			
PART NUMBER		DESCRIPTION			ITEM
QUANTITY		MATERIALS LIST			
UNLESS OTHERWISE SPECIFIED 1) All dimensions are in metric(mm). 2) Tolerances are as follows: 1 PL DEC ±0.30 2 PL DEC ±0.16 3 PL DEC ±0.08 3) Note reference = 		SIGNATURES		DATE	
		DRAWN: BROOK		30/NOV/18	
		CHECKED: ORION		30/NOV/18	
		ENGINEER:			
		APPROVAL: TOMMY		30/NOV/18	
MATERIAL SPECIFICATIONS:		CUSTOMER:		<div>Amphenol</div> <div>Sine Systems - www.amphenol-sine.com 44724 Morley Drive Clinton Township, MI 48036</div> <div>4P RECEPTACLE, FLANGE MOUNT, END CAP</div>	
PROCESS SPECIFICATIONS:		THIS DRAWING IS SUPPLIED FOR INFORMATION ONLY. DESIGN FEATURES, SPECIFICATIONS AND PERFORMANCE DATA SHOWN HEREON ARE THE PROPERTY OF THE AMPHENOL CORPORATION. NO RIGHTS OF REPRODUCTION ARE IMPLIED. ALL DIMENSIONS ARE SUBJECT TO NORMAL MANUFACTURING VARIATIONS.			
NEXT ASSY:					
		SIZE B C-	TYPE	DWG NO: AT04-4P-LE11	REVISION A1
		SCALE: NONE		SHEET 2 OF 2	