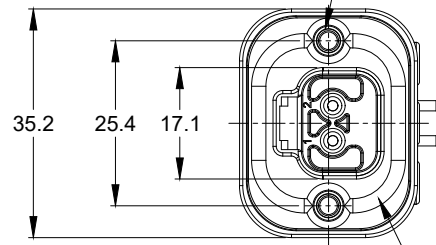
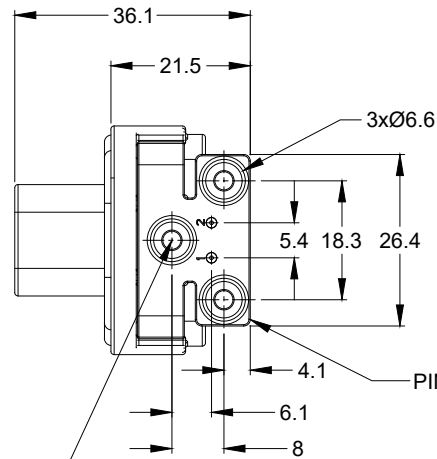


2xØ3.10±0.12x11.18 DP
RECOMMENDED SCREW: 6-19 [M3.63 x 1.34]
THREAD-FORMING SCREW,
TORQUE: 11-15 IN-LB [1.24-1.70 NM]

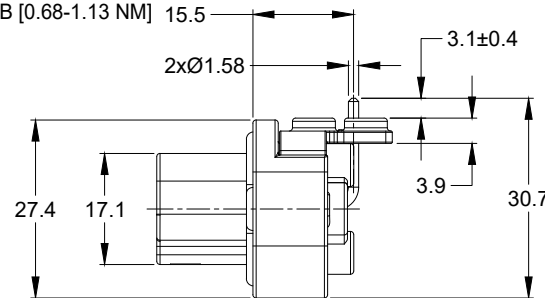


FLANGE SEAL



PIN SPACER

3xØ2.79±0.12
RECOMMENDED SCREW: 4-20 [M3.12 x 1.27]
THREAD-FORMING SCREW,
TORQUE: 6-10 IN-LB [0.68-1.13 NM]



NOTES: UNLESS OTHERWISE SPECIFIED

1. MATERIAL:

HOUSING: THERMOPLASTIC
SEAL: SILICONE RUBBER
CONTACT: COPPER ALLOY

2. MODIFICATIONS: FLANGE, PCB MOUNT RIGHT ANGLE

3. SPECIFICATIONS:

- 3.1 CURRENT RATING: 13 AMPS
- 3.2 OPERATING TEMPERATURE: -55°C TO +125°C
- 3.3 DIELECTRIC WITHSTANDING VOLTAGE: LESS THAN 2 MILLIAMPS CURRENT LEAKAGE @ 1500 VOLTS AC.
- 3.4 INSULATION RESISTANCE: 1000 MEGOHMS MIN @ 25°C.
- 3.5 MOISTURE RESISTANCE: IP67 (MATED CONDITION)
- 3.6 MATING CYCLE DURABILITY: 100 CYCLES
- 3.7 RoHS COMPLIANT

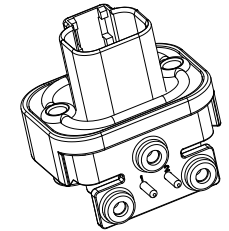
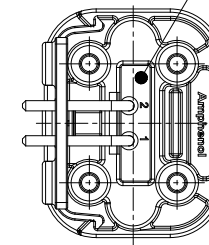
4. MATING PART: AT06-2S* PLUG
(* = MODIFICATIONS)

5. ALL DIMENSIONS ARE FOR REFERENCE USE ONLY.

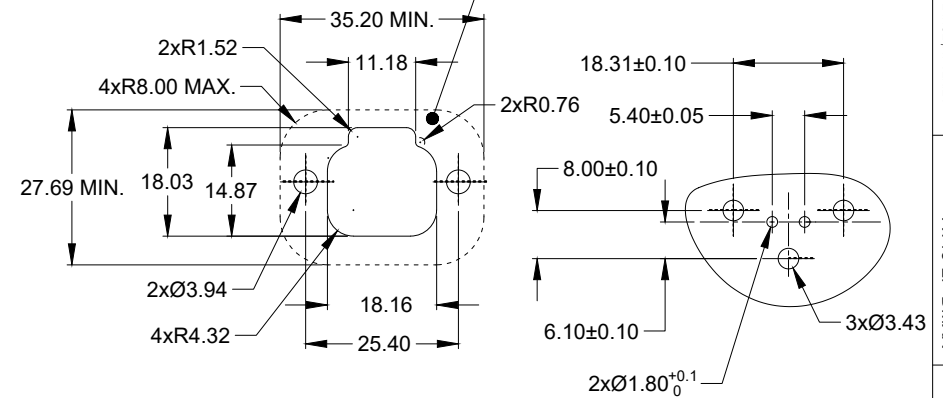
AT13-2P-BMXX VARIANTS		
CONTACT PLATING	POTTING OR NOT IN RESERVOIR	PART NUMBER
GOLD	NO POTTING	AT13-2P-BM01
GOLD	POTTING	AT13-2P-BM02
TIN	NO POTTING	AT13-2P-BM03
TIN	POTTING	AT13-2P-BM04

REVISIONS					
REV	ECO	DESCRIPTION	DATE	BY	APPR
A1	--	RELEASE NEW DRAWING	20JUN18	JONY	TOMMY

RESERVOIR




INTERNAL SEALING SURFACE
FINISH TO BE 3.2 OR BETTER $\sqrt{0.13}$



RECOMMENDED PANEL CUTOUT

RECOMMENDED PCB LAYOUT

AT13-2P-BMXX				DESCRIPTION		ITEM			
PART NUMBER									
QUANTITY		MATERIALS LIST							
UNLESS OTHERWISE SPECIFIED		SIGNATURES		DATE		<div>Amphenol</div> <div>Sine Systems - www.amphenol-sine.com</div> <div>44724 Morley Drive</div> <div>Clinton Township, MI 48036</div> <div>PCB MOUNT RECEPTACLE,2PIN</div> <div>RA FLANGE,AT SERIES</div>			
1) All dimensions are in metric(mm).		DRAWN:		JONY.XIE				20JUN18	
2) Tolerances are as follows:		CHECKED:		ORION.LI				20JUN18	
1 PL DEC ±0.30 Fractions ±1/64		ENGINEER:							
2 PL DEC ±0.15 Angles ±1°		APPROVAL:		TOMMY.XIE				20JUN18	
3) Note reference = 									
MATERIAL SPECIFICATIONS:		CUSTOMER:							
PROCESS SPECIFICATIONS:		THIS DRAWING IS SUPPLIED FOR INFORMATION ONLY. DESIGN FEATURES, SPECIFICATIONS AND PERFORMANCE DATA SHOWN HEREON ARE THE PROPERTY OF THE AMPHENOL CORPORATION. NO RIGHTS OF REPRODUCTION ARE IMPLIED. ALL DIMENSIONS ARE SUBJECT TO NORMAL MANUFACTURING VARIATIONS.				SIZE			
NEXT ASSY:						TYPE			
						DWG NO:			
						B C-			
						AT13-2P-BMXX			
						REVISION			
						A1			
						SCALE			
						NONE			
						SHEET			
						1			
						OF			
						1			