

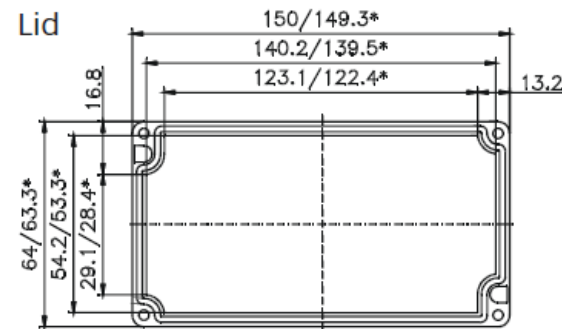
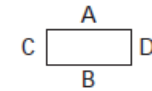
Type: 010615030

External dimensions: 64 x 150 x 34 mm

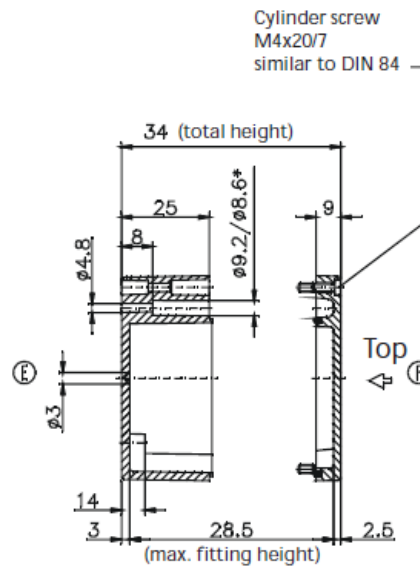
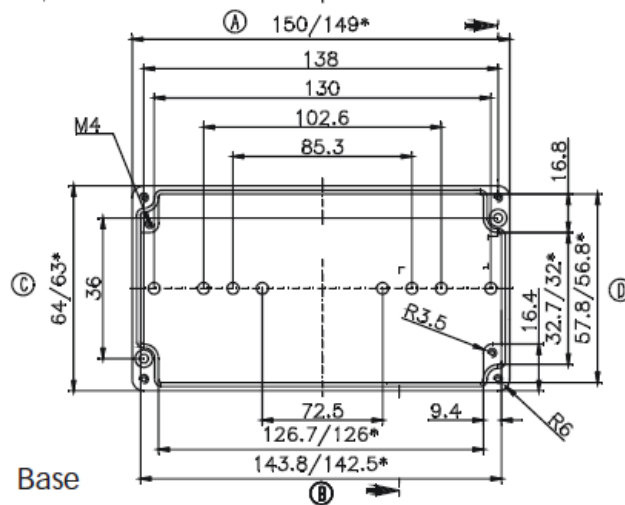
Weight: 316 g

DIN rail length in mm	max. fitting length in mm	Earthing rail clamp	Mounting plate (thickness in mm)	External mounting brackets	External hinge* set	EMC version	Internal hinge* set	SWB / SBGL Corr.protection	Allen lid screws	Silicone lid seal	Sealable lid screws in steel	Turn bolt fastener on request	Quick lock
TS 15													
139						•		•	•	•	•		

Maximum number of cable glands to DIN 50262\*



\* = Conical form tapering downwards  
Free dimensions-tolerance to GTA 13/5 DIN 1688



M	Corner dim.	Side		PG	Corner dim.	Side	
		A/B	C/D			A/B	C/D
12	17.25	8	1	7	17.25	8	1
16	25.30			9	21.85	6	1
20	27.60			11	25.30		
25	37.95			13.5	27.60		
32	48.30			16	31.05		
40	60.95			21	37.95		
50	69.00			29	48.30		
63	74.75			36	60.95		
				42	69.00		
				48	74.75		

DATE		7330 Executive Way Frederick, MD 21704 (301) 696-9411 voice (301) 696-9494 fax	
17 MAY 2017			
SHEET		ENCLOSURE, STANDARD, ALUMINUM 64 X 150 X 34MM, RAL7001	
1			
DESCRIPTION			
ENCLOSURE, STANDARD, ALUMINUM 64 X 150 X 34MM, RAL7001			
SIZE	DRAWING NUMBER		REV
A	010615030		-