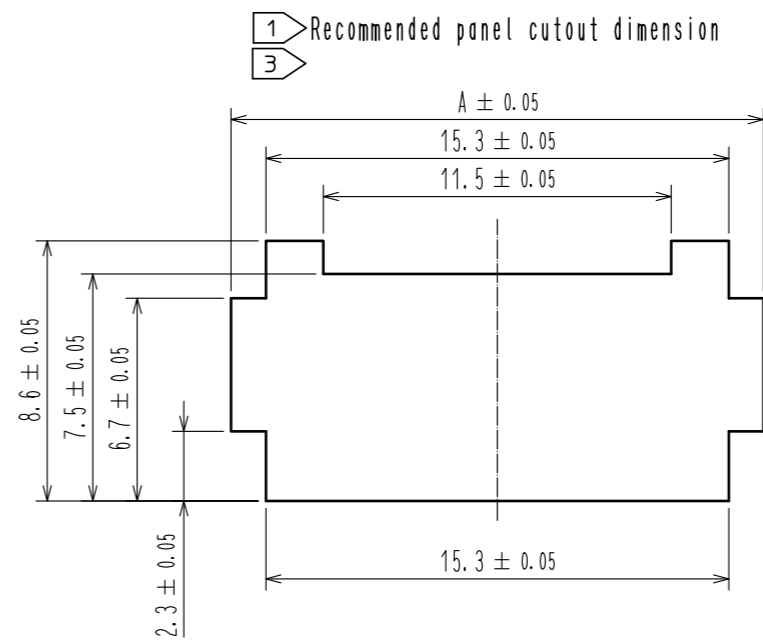
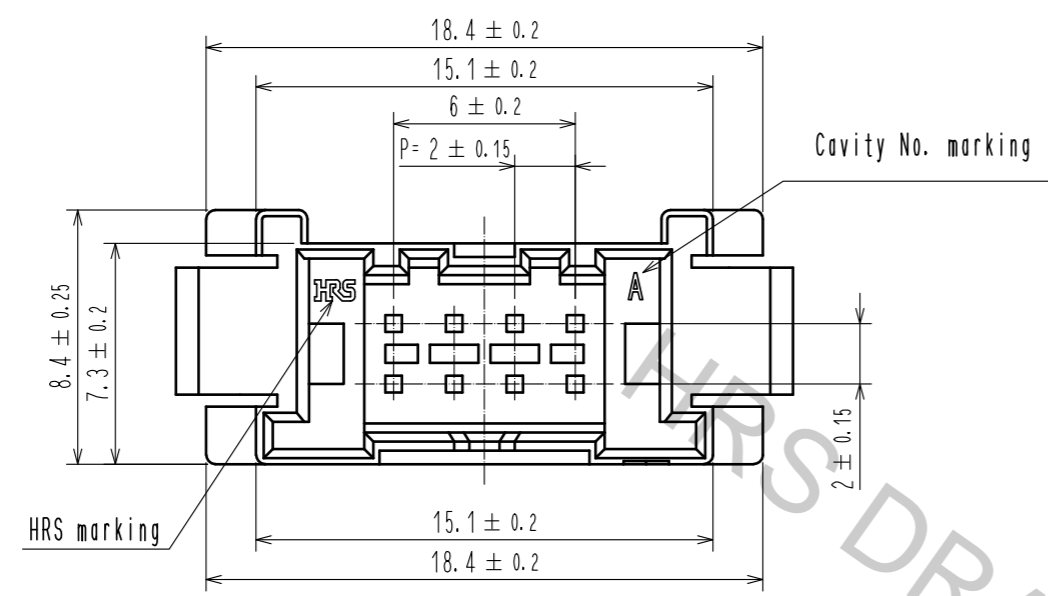
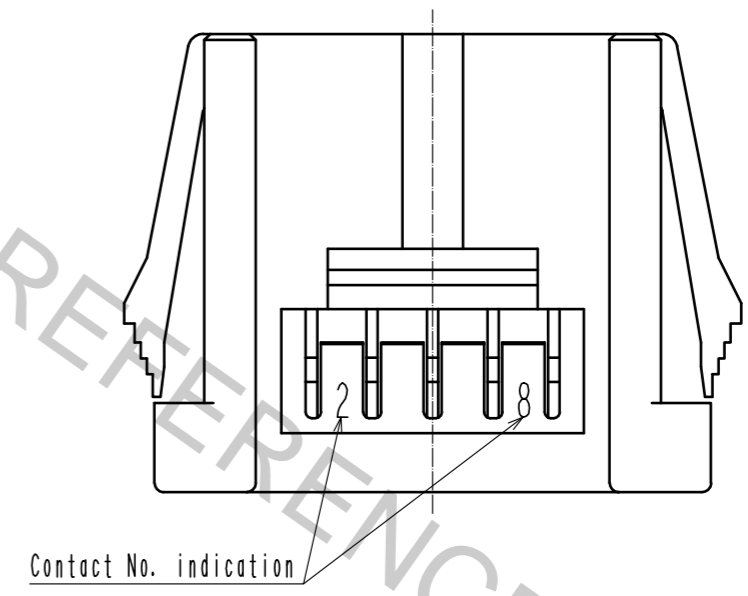
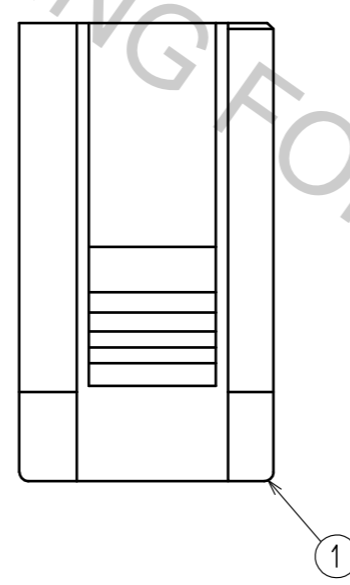
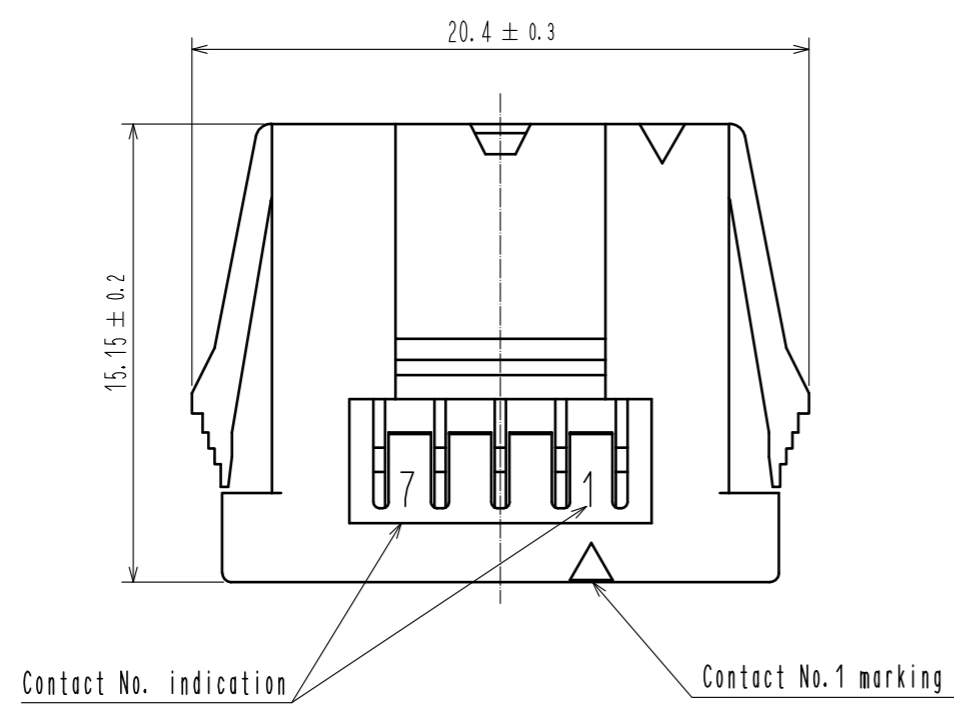


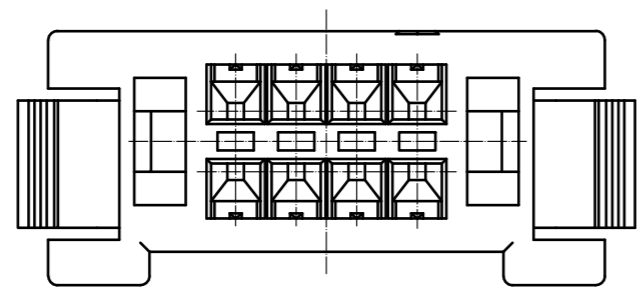
Mar.1.2019 Copyright 2019 HIROSE ELECTRIC CO., LTD. All Rights Reserved.
In case that the application demands a high level of reliability, such as automotive,
please contact a company representative for further information.

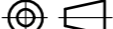





Panel thickness	A
0.5~0.8	17.6
0.9~1.3	18.1
1.4~1.8	18.5
1.9~2.3	18.9



Note 1 Please use non-radius side for the panel hooking area.
2 Applicable panel thicknessing is 2.3 to 0.5 mm.
3 Consult hirose for the other panel cutout designs than recommended one.
4. Per pack : 100 pieces.
5. UL(File No. E52653).
C-UL(File No. E52653) authorization article.



			1		PBT		UL94V-0, BLAC				
NO.	MATERIAL		FINISH . REMARKS			NO.	MATERIAL		FINISH . REMARKS		
UNITS mm		SCALE 4 : 1		COUNT 1	DESCRIPTION OF REVISIONS DIS-H-00004537		DESIGNED TS. MIYAKI		CHECKED HS. OKAWA		DATE 20181221
 HIROSE ELECTRIC CO., LTD.			APPROVED : HS. OKAWA		20160601	DRAWING NO.	EDC-366284-00-00				
			CHECKED : YN. TAKASHITA		20160601	PART NO.	DF51-8DEP-2C				
			DESIGNED : TT. OHSAKO		20160601	CODE NO.	CL543-5073-0-00				
			DRAWN : TT. OHSAKO		20160601		1	1			

