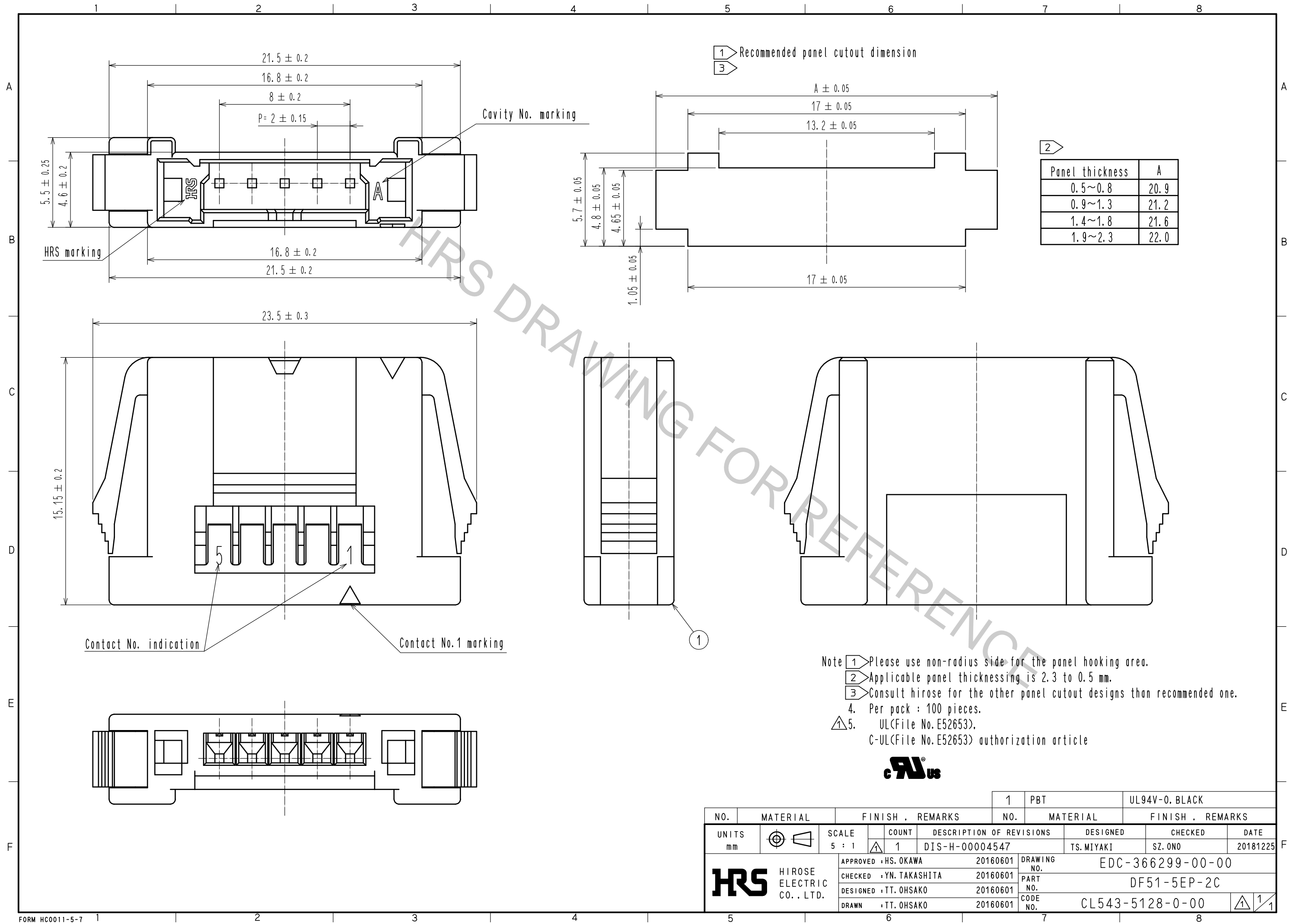


Mar.1.2019 Copyright 2019 HIROSE ELECTRIC CO., LTD. All Rights Reserved.
In case that the application demands a high level of reliability, such as automotive,
please contact a company representative for further information.



Note 1 Please use non-radius side for the panel hooking area.
2 Applicable panel thicknessing is 2.3 to 0.5 mm.
3 Consult hirose for the other panel cutout designs than recommended one.
4. Per pack : 100 pieces.
5. UL(File No.E52653).
C-UL(File No.E52653) authorization article



NO.		MATERIAL		FINISH . REMARKS		1	PBT	UL94V-0. BLACK
UNITS		mm		SCALE		COUNT		DESCRIPTION OF REVISIONS
				5 : 1		1		DIS-H-00004547
								DESIGNED
								TS.MIYAKI
								CHECKED
								SZ.ONO
								DATE
								20181225
								DRAWING NO.
								EDC-366299-00-00
								PART NO.
								DF51-5EP-2C
								CODE NO.
								CL543-5128-0-00
								1/1

HRS HIROSE
ELECTRIC
CO., LTD.

APPROVED : HS. OKAWA 20160601
CHECKED : YN. TAKASHITA 20160601
DESIGNED : TT. OHSAKO 20160601
DRAWN : TT. OHSAKO 20160601

DRAWING NO. EDC-366299-00-00
PART NO. DF51-5EP-2C
CODE NO. CL543-5128-0-00