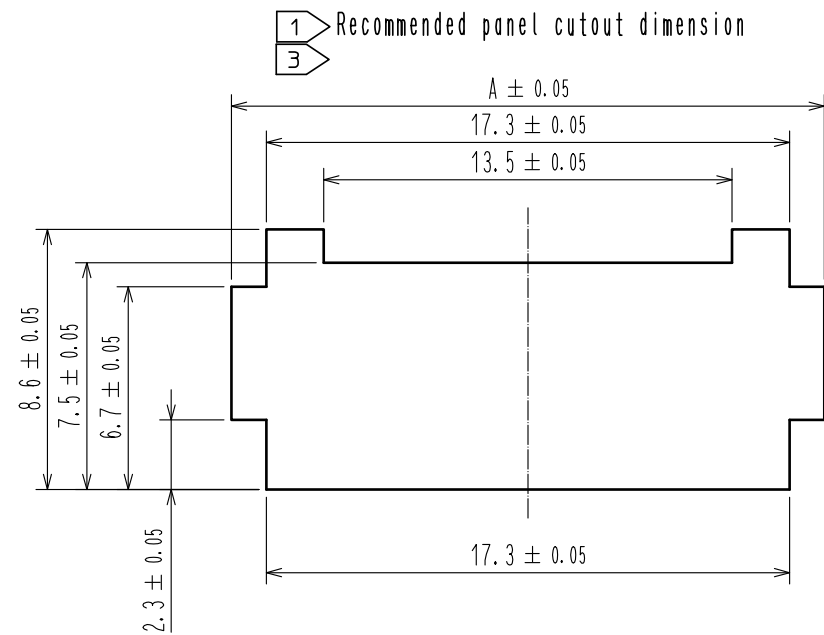
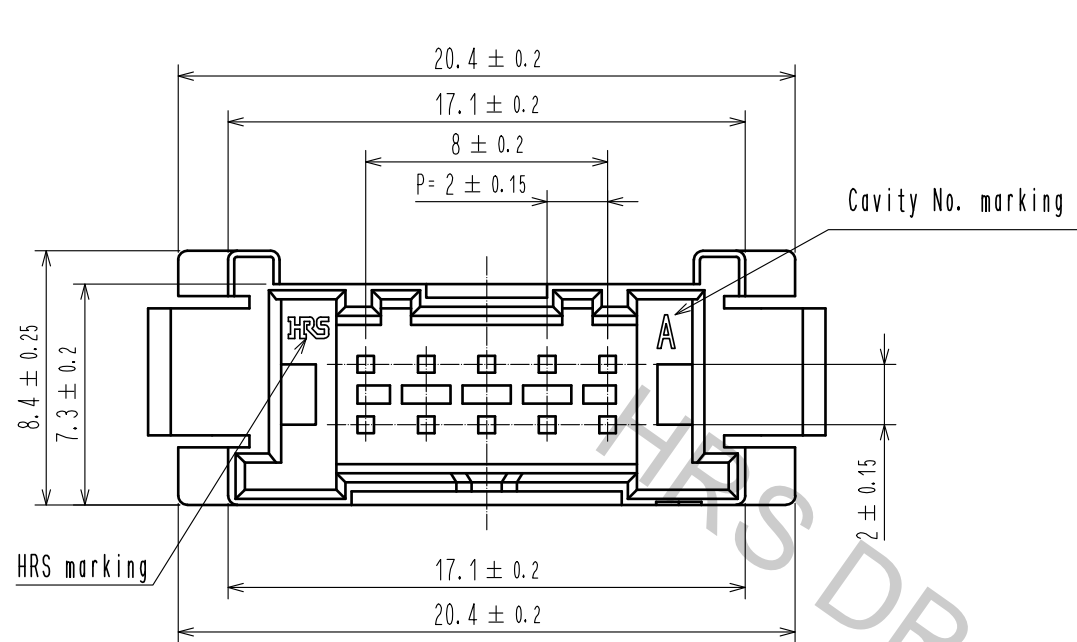
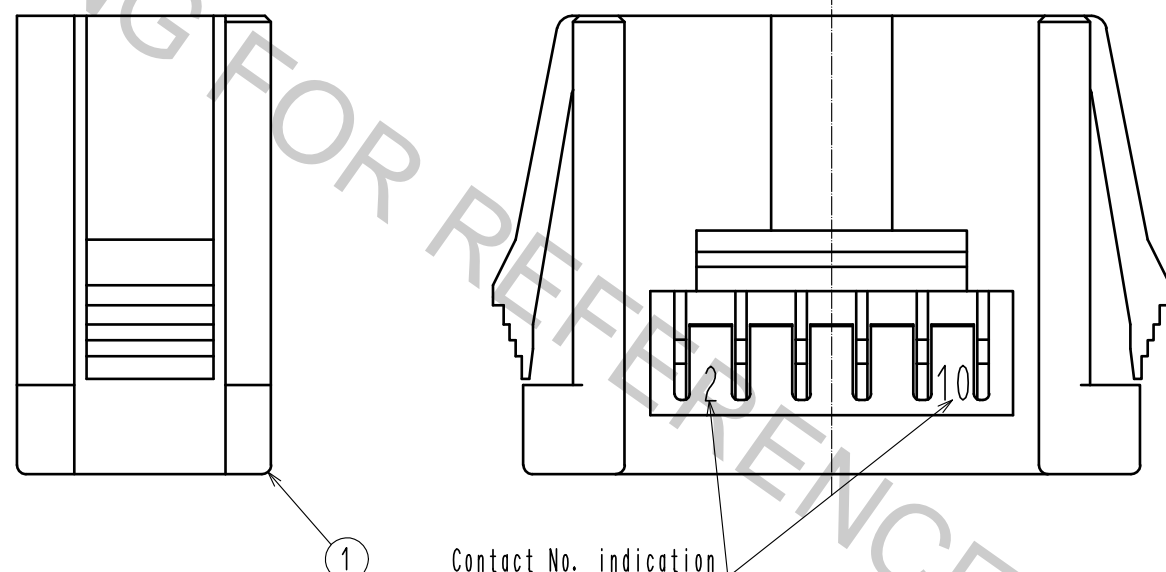
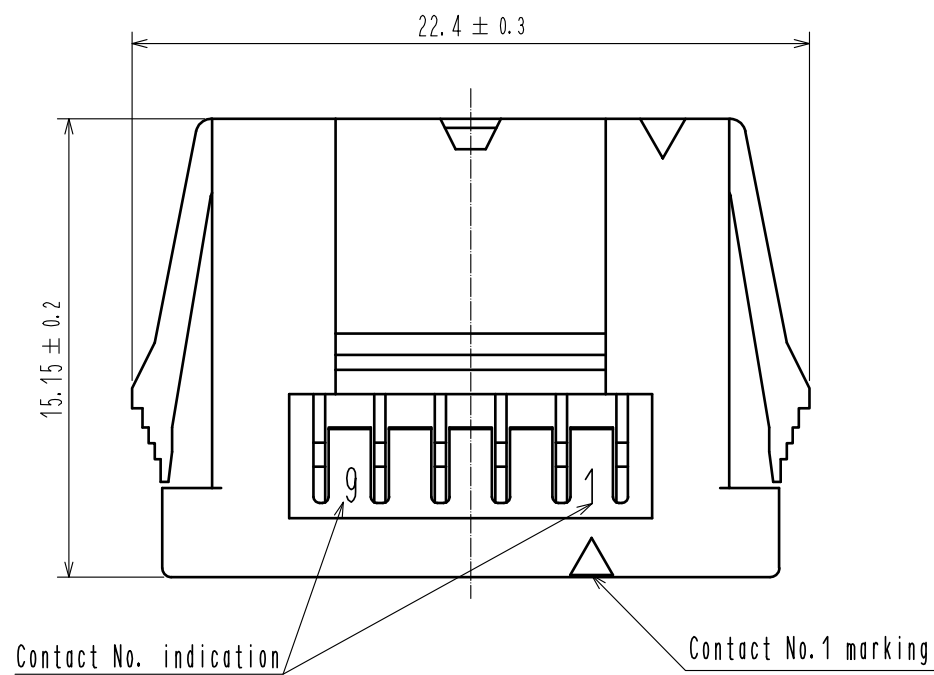


Mar.1.2019 Copyright 2019 HIROSE ELECTRIC CO., LTD. All Rights Reserved.  
In case that the application demands a high level of reliability, such as automotive,  
please contact a company representative for further information.



Panel thickness	A
0.5~0.8	19.6
0.9~1.3	20.1
1.4~1.8	20.5
1.9~2.3	20.9



- Note
- Please use non-radius side for the panel hooking area.
  - Applicable panel thicknessing is 2.3 to 0.5 mm.
  - Consult hirose for the other panel cutout designs than recommended one.
  - Per pack : 100 pieces.
  - UL(File No.E52653),  
C-UL(File No.E52653) authorization article.



NO.				1				PBT				UL94V-0, BLACK			
MATERIAL				FINISH . REMARKS				MATERIAL				FINISH . REMARKS			
UNITS				SCALE				COUNT				DESCRIPTION OF REVISIONS			
mm				4 : 1				1				DIS-H-00004537			
HRS				APPROVED : HS. OKAWA				20160601				DRAWING NO.			
HIROSE				CHECKED : YN. TAKASHITA				20160601				PART NO.			
ELECTRIC				DESIGNED : TT. OHSAKO				20160601				CODE NO.			
CO., LTD.				DRAWN : TT. OHSAKO				20160601				CL543-5074-0-00			
												1			