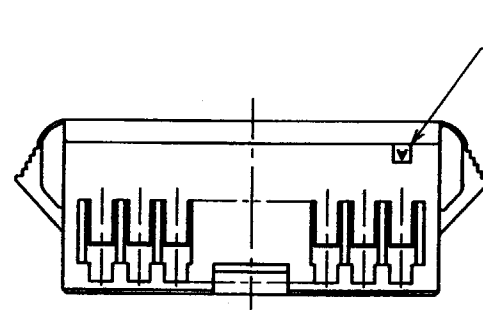
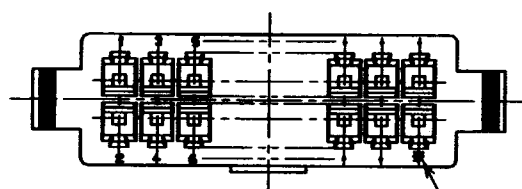
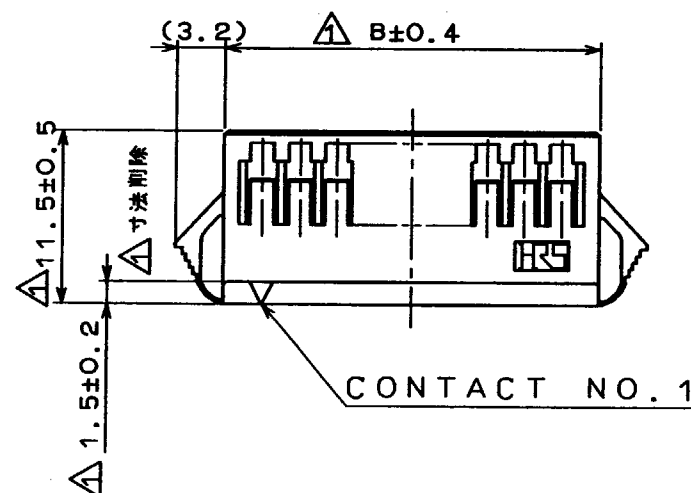
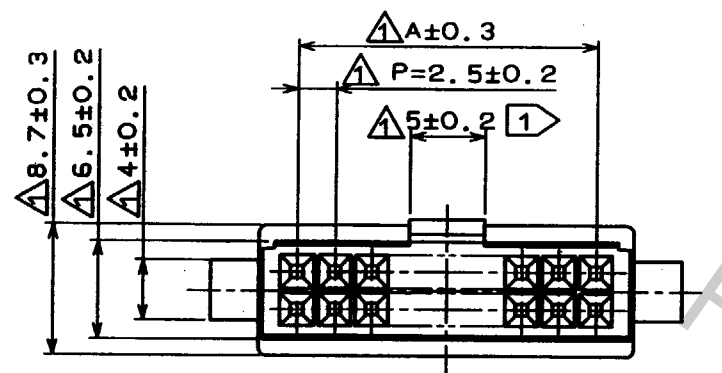
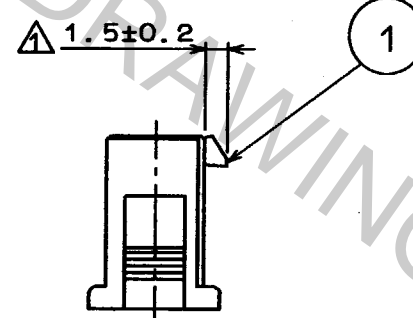


COUNT	DESCRIPTION OF REVISIONS	BY	CHKD	DATE	COUNT	DESCRIPTION OF REVISIONS	BY	CHKD	DATE
1	12	RE-H-1698	R.S	T.O	96.2.8				

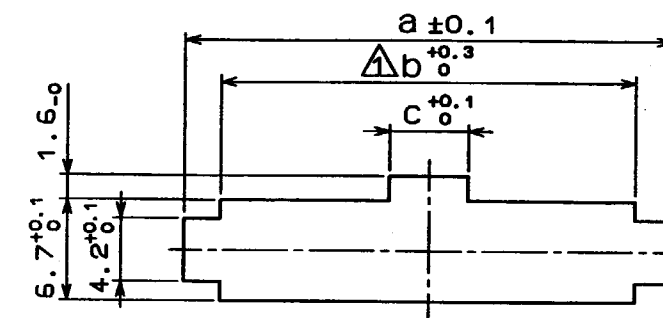


NUMBER OF CONTACTS

CAVITY NO.



< PANEL CUTOUT >



PLEASE NOTE THAT A DIMENSION (PANEL THROUGH HOLE) VARY WITH THICKNESS OF PANEL WHEN YOU MOUNT DF1B EXTENSION SOCKET TO THE PANEL. AND PLEASE PROCESS THE PANEL THROUGH HOLE WITHOUT BURR.

HRS NO.		PART NO.		PANEL CUTOUT						
				PANEL THICKNESS			b	c		
				0.5-1.2	1.3-1.6	1.7-2.0				
A	B	a	a	a	b	c				
CL541-0351-1	DF1B-10DES-2.5RC	10.0	15.0	19.1	19.8	20.5	15.2	3.7		
0352-4	12	12.5	17.5	21.6	22.3	23.0	17.7	3.7		
0353-7	14	15.0	20.0	24.1	24.8	25.5	20.2	3.7		
0354-0	16	17.5	22.5	26.6	27.3	28.0	22.7	3.7		
0346-1	18	20.0	25.0	29.1	29.8	30.5	25.2	3.7		
0355-2	20	22.5	27.5	31.6	32.3	33.0	27.7	5.2		
0356-5	22	25.0	30.0	34.1	34.8	35.5	30.2	5.2		
0357-8	24	27.5	32.5	36.6	37.3	38.0	32.7	5.2		
0358-0	26	30.0	35.0	39.1	39.8	40.5	35.2	5.2		
0359-3	28	32.5	37.5	41.6	42.3	43.0	37.7	5.2		
0360-2	30	35.0	40.0	44.1	44.8	45.5	40.2	5.2		
0361-5	32	37.5	42.5	46.6	47.3	48.0	42.7	5.2		
0362-8	34	40.0	45.0	49.1	49.8	50.5	45.2	5.2		

1 10 CONTACTS TO 18 CONTACTS SHALL BE 3.5mm.

NO. MATERIAL		FINISH, REMARKS		1	POLYAMIDE	NATURAL (WHITE) UL94V-0	
CODE NO. (OLD)		DRAWN		DESIGNED	CHECKED	APPROVED	RELEASED
		M. Gotoh		M. Gotoh	T. Ome	M. Yamamoto	
		94 324		94 324	94 325	94 325	
DRAWING NO.		PART NO.					
EDC3-160094-02		DF1B-*DES-2.5RC					
SCALE		CODE NO.					
2 : 1		0346 1					
UNITS		CL541- 0362 - 8					
mm							