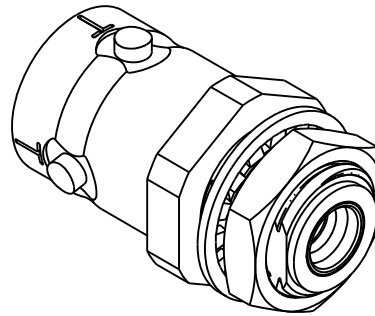
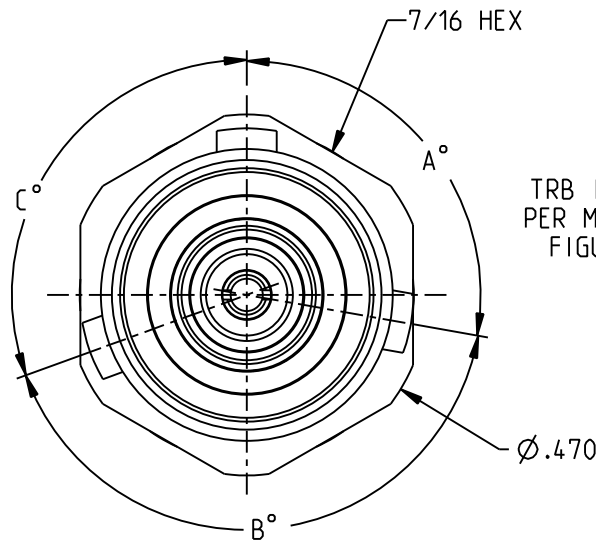


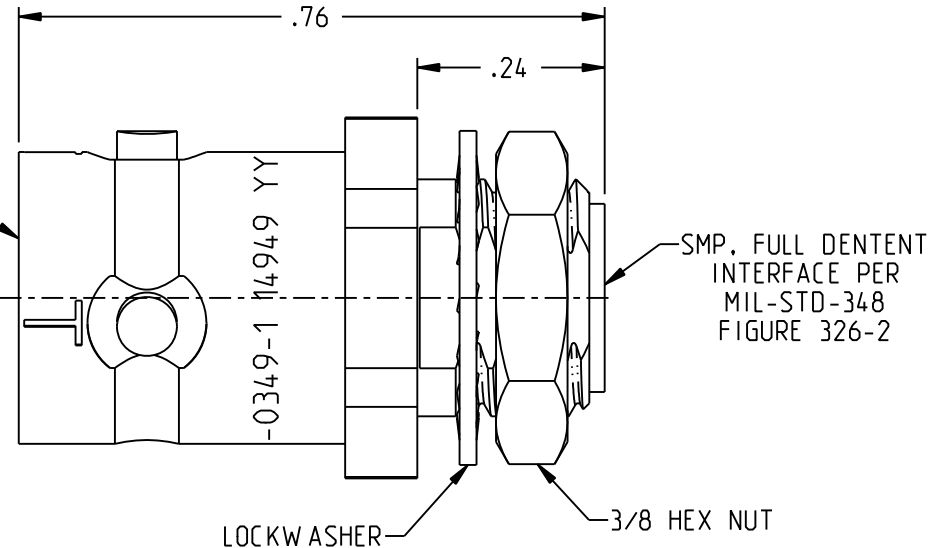
POLARIZATION CHART				
TROMPETER PART NO	KEYING LETTER	A°	B°	C°
3-0349-1	T	100	150	110
3-0349-2	U	120	130	110
3-0349-3	V	115	130	115
3-0349-4	W	125	110	125
3-0349-5	X	130	100	130
3-0349-6	Y	110	140	110
3-0349-7	Z	100	160	100
3-0349-8	S	135	135	90
3-0349-9	NONE	120	120	120



UNRELEASED ECO
REV 001
ECO 56897
FEBRUARY 20, 2018
C.MONAHAN



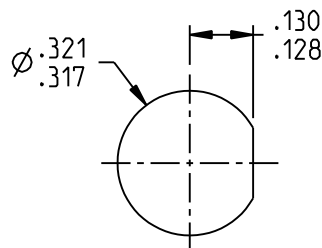
TRB INTERFACE
PER MIL-STD-348
FIGURE 301-2



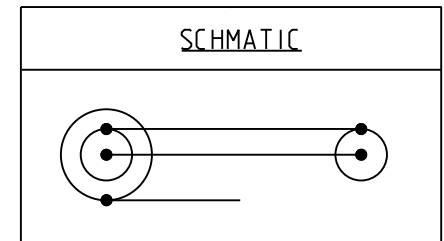
NOTES: UNLESS OTHERWISE SPECIFIED.

- MATERIAL & FINISH:
 - BODY: NICKEL PLATED BRASS
 - OUTER INSULATOR: PTFE (TEFLON)
 - INTERMEDIATE CONTACT: GOLD PLATED BRASS
 - DIELECTRIC: PTFE (TEFLON)
 - CENTER CONTACT: GOLD PLATED BERYLLIUM COPPER
 - MOUNTING HARDWARE: NICKEL PLATED COPPER ALLOY
- ELECTRICAL:
 - IMPEDANCE: NON-CONSTANT
 - FREQUENCY (MAX): 500 MHz
- PANEL THICKNESS (MAX): .10
- PANEL NUT TORQUE (MAX): 25 INCH POUND

3-0349-1 SHOWN



RECOMMENDED
PANEL CUTOUT



<p>This PROPRIETARY Document is property of Cinch Connectivity Solutions. It is confidential in nature, non-transferable, and issued with the clear understanding that it is not traced or copied without permission and is returnable upon demand.</p> <p>INTERPRET DRAWING IN ACCORDANCE WITH ASME Y14.5-2009.</p>	<p>RoHS2 <input checked="" type="checkbox"/> 2011/65/EU</p> <p>UNLESS OTHERWISE SPECIFIED UNITS: INCH</p> <p>.XX ±.02 .XXX ±.010 ANGLES ±2°</p>	<p>TROMPETER</p> <p>Title: TRB TO SMP BULKHEAD ADAPTER</p>
		<p>Model No. 3-0349-X</p> <p>Size A DO NOT SCALE DRAWING Date: 11/29/2017 Sheet 1 OF 1</p>