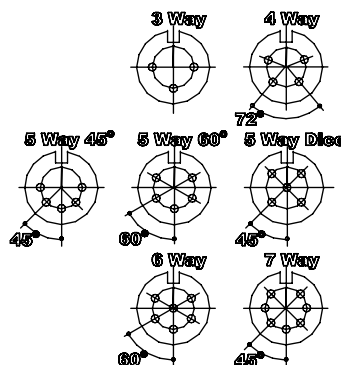
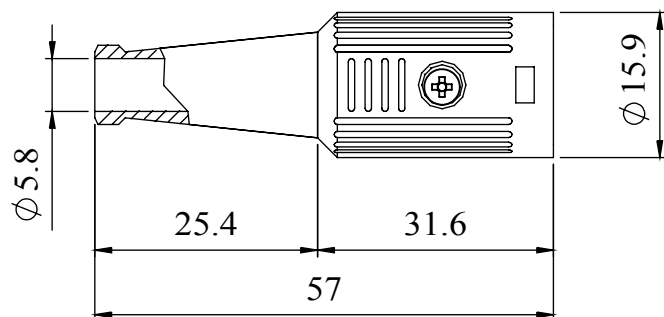


A FULLY SCREENED ROBUST RANGE OF DIN CONNECTORS FOR USE IN INSTRUMENTATION AND AUDIO APPLICATIONS.  
AVAILABLE IN TWO FINISHES BRIGHT NICKEL AND BLACK CHROME PLATE  
INCORPORATING CABLE GRIP AND STRAIN RELIEF.  
LINE SOCKET MATES WITH ALL STANDARD AND LOCKABLE DIN PLUGS

MANUFACTURED TO DIN 41524, 45322, 45326, 45327 AND 45329

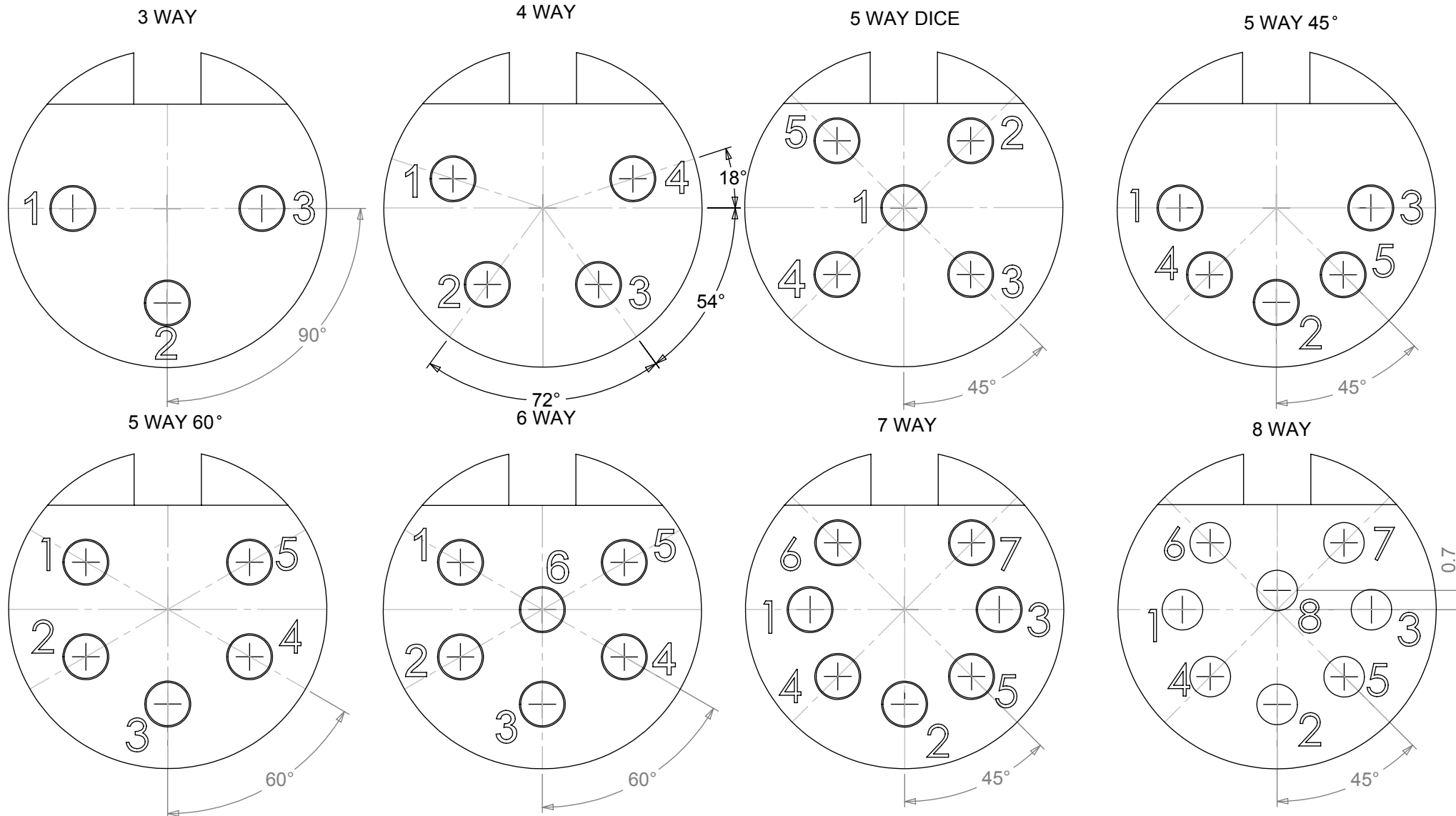
## DIMENSIONS



MATERIALS	
HOUSING	ZINC ALLOY
FINISH	BRIGHT NICKEL OR BLACK CHROME PLATE
MOULDING	NYLON
CONTACTS	BRASS BS2874 CZ121, PLATEED SILVER 3 MICRONS ON COPPER 1.5 MICRONS & ANTI-TARNISH
CABLE CLAMP	BRASS BS2874 CZ121, PLATED SILVER 3 MICRONS ON COPPER 1.5 MICRONS & ANTI-TARNISH
GROMMET	PVC BLACK
SCREW	M2.5 x 4 mm STEEL
ELECTRICAL	
RATED VOLTAGE	34V AC OR DC
CRRENT RATING	2 Amp
TEST VOLTAGE	500 V r.m.s
INSULATION RESISTANCE	103 MΩ MIN AT 100 V DC
CONTACT RESISTANCE	10mΩ MAX
CAPACITANCE (MATED)	3pF
CLIMATIC	
CLIMATIC CATEGORY	25/070/21
TEMPERATURE RATING	-25 °C TO + 70 °C
DAMP HEAT, STEADT STATE	21 DAYS

TYPE	PART NUMBER	
	NICKEL	BLACK
3 WAY	600-0300	601-0300
4 WAY	600-0400	601-0400
5 WAY 45°	600-0500	601-0500
5 WAY 60°	600-0510	601-0510
5 WAY DICE	600-0520	601-0520
6 WAY	600-0600	601-0600
7 WAY	600-0700	601-0700

# **PIN VARIATIONS USED IN: 590 / 591 / 592 / 600 / 601 / 610 / 611 - DIN PLUG CONNECTORS**



**MANUFACTURED TO DIN STANDARD 41524, 45322, 45326, 45327 AND 45329**