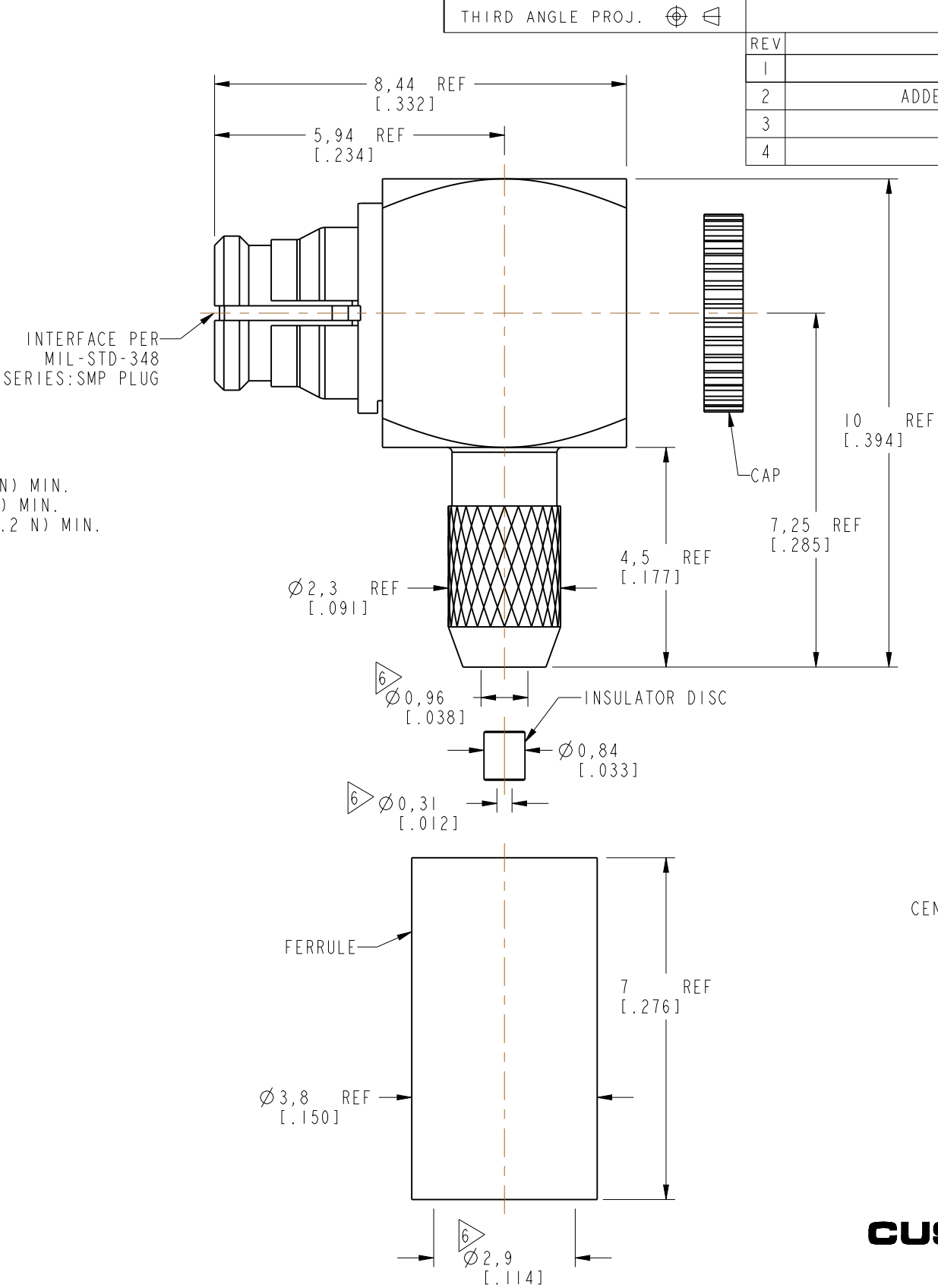


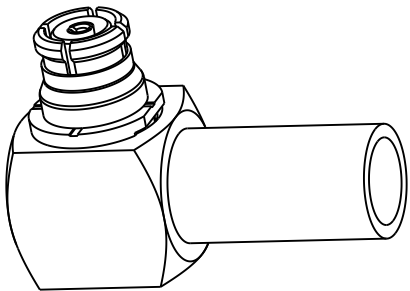
NOTES:

1. MATERIALS AND FINISHES:
BODY & CONTACT - BeCu, GOLD PLATING
BODY-REAR & CAP - BRASS, GOLD PLATING
RETAINING RING - BeCu, NICKEL PLATING
FERRULE - COPPER, NICKEL PLATING
INSULATOR - PTFE, NATURAL
INSULATOR DISC - PEEK, NATURAL
2. ELECTRICAL:
A. IMPEDANCE: 50 OHM
B. FREQUENCY RANGE: DC - 26.5 GHz.
C. VSWR (RETURN LOSS): 1.22 MAX. (-20 dB MIN.) @ DC - 3 GHz
1.43 MAX. (-15 dB MIN.) @ 3 - 12.4 GHz
D. DIELECTRIC WITHSTANDING VOLTAGE: 500 VRMS, MIN.
3. MECHANICAL:
A. DURABILITY: 100 CYCLES MIN. WHEN MATED FULL DETENT JACK
500 CYCLES MIN. WHEN MATED LIMITED DETENT JACK
1000 CYCLES MIN. WHEN MATED A SMOOTH BORE JACK
B. TEMPERATURE RANGE: -65°C TO 165°C
C. MATING FORCES (PER DSCC #94007):
ENGAGEMENT: DISENGAGEMENT:
FULL DETENT: 15 LBS (67 N) MAX. FULL DETENT: 5 LBS (22 N) MIN.
LIMITED DETENT: 10 LBS (45 N) MAX. LIMITED DETENT: 2 LBS (9 N) MIN.
SMOOTH BORE: 2 LBS (9 N) MAX. SMOOTH BORE: 0.5 LBS (2.2 N) MIN.
4. PACKAGING:
A. QUANTITY: SINGLE PACK
B. MARKING: BAG TO BE MARKED
"AMPHENOL RF, SMP-FR-CI9 AND DATE CODE"
5. CABLE ASSEMBLY INSTRUCTIONS:
A. TRIM CABLE AS SHOWN.
B. SLIDE FERRULE AND INSULATOR DISC ONTO CABLE.
C. SOLDER CABLE CENTER CONDUCTOR TO CONTACT.
D. CRIMP FERRULE OVER THE BRAID WITH 0.128" HEX.
E. PRESS CAP FLUSH.

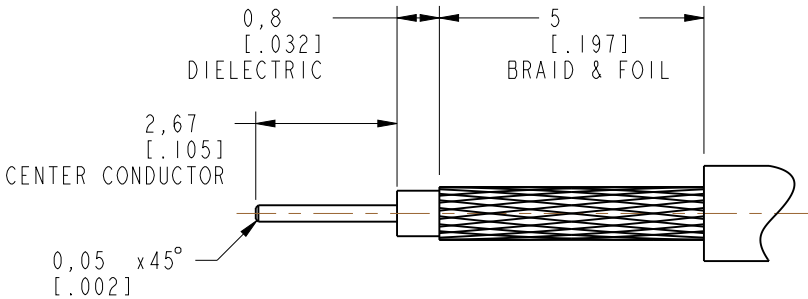
6 SHOWS CABLE ENTRY DIMENSIONS.



REVISIONS				
REV	DESCRIPTION	DATE	ECO	APPR
1	PROTOTYPE RELEASE	04-Dec-17	-----	PL
2	ADDED A D-FLAT AT THT FLANGE	16-Jul-18	-----	MZ
3	INSTRUCTIONS UPDATED	11-Sep-18	-----	BMG
4	UPDATED VSWR SPEC	17-Oct-18	-----	EH



SCALE 4.000



RECOMMENDED CABLE
STRIPPING DIMENSIONS

PRELIMINARY ISSUE

CUSTOMER OUTLINE DRAWING
ALL OTHER SHEETS ARE FOR INTERNAL USE ONLY

UNLESS OTHERWISE SPECIFIED, DIMENSIONS ARE IN METRIC AND TOLERANCES ARE: <0.5mm ± 0.05mm 0.5 - 6mm ± 0.1mm 6 - 30mm ± 0.2mm 30 - 120mm ± 0.3mm ANGLES ±1°	MATERIAL SEE NOTES	DRAWN LOKESH P	DATE 16-Jul-18	TITLE SMP RA PLUG WITH ROCK RING FOR RG 178 CABLE		Amphenol RF www.amphenolrf.com	
		ENGINEER VIJI K	DATE 04-Dec-17				
		APPROVED	DATE				
		REFERENCE EAR# 8025 AND SMP-FR-C08-1	CAD FILE		SCALE: 8.5:1.0	SHEET 2 OF 2	DRAWING NO.SMP-FR-CI9
		CONFIGURATION LEVEL: In Work	FINISH		DWG SIZE B	REV 4	ITEM NO. SMP-FR-CI9 PART NO. SMP-FR-CI9