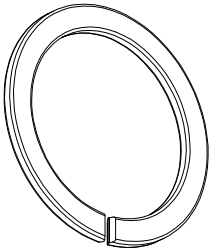
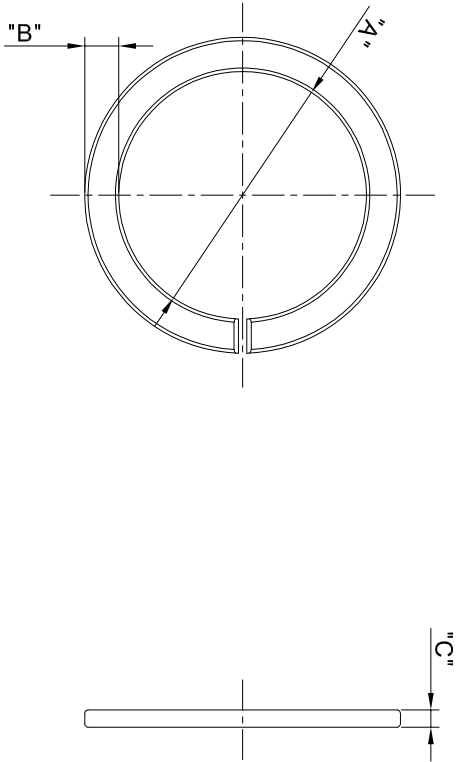


REVISIONS				
REV	ECO	DESCRIPTION	DATE	BY APPR
A1		FIRST RELEASED	Apr.05.2016	Drack Tommy
A2		UPDATE THE NOTES	JUL20.2016	Drack Tommy
A3		ADD 16# & 18# PART	Nov.22.2017	Nick Tommy



NOTES : (UNLESS OTHERWISE SPECIFIED)
1. MATERIAL : THERMOPLASTIC , UL94 V-0.

2. SPECIFICATIONS :
2.1, OPERATING TEMPERATURE : -40°C ~ 125°C.
2.2, RoHS COMPLIANT.

3. ALL DIMENSIONS ARE FOR REFERENCE USE ONLY.

SHELL	P/N	DIM A	DIM B	DIM C
8#	RTS8CCRx	Ø11.2	2.0	1.0
10#	RTS10CCRx	Ø14.5	2.0	1.0
12#	RTS12CCRx	Ø18.5	1.9	1.2
14#	RTS14CCRx	Ø21.7	1.9	1.8
16#	RTS16CCRx	Ø24.2	1.9	1.0
18#	RTS18CCRx	Ø27.6	1.9	1.0

"X" DENOTE COLOR:
WHEN "X"="G", GREEN, PANTONE 348C.
WHEN "X"="R", RED, PANTONE 194C.
WHEN "X"="Y", YELLOW, PANTONE 123C.

QUANTITY	PART NUMBER	DESCRIPTION	ITEM
MATERIALS LIST			
UNLESS OTHERWISE SPECIFIED			
1) All dimensions are in millimeters. 2) Tolerances are as follows: 1 Pt. DEC 40.30 Fractions ±.164 2 Pt. DEC 40.30 Fractions ±.17 3 Pt. DEC 40.08 Angles ±1°			
3) Note reference =			
MATERIAL SPECIFICATIONS			
CUSTOMER: Tommy			
APPROVAL: Tommy			
THIS DRAWING IS SUBJECT TO THE SPECIFICATIONS AND PERFORMANCE DATA OF THE MATERIALS LISTED. THE MANUFACTURER ASSUMES NO RESPONSIBILITY FOR REPRODUCTION AND LITIGATION. ALL MANUFACTURING VARIATIONS.			
PROCESS SPECIFICATIONS			
NEXT ASST:			
SCALE: NONE			
SHEET 1 OF 1			